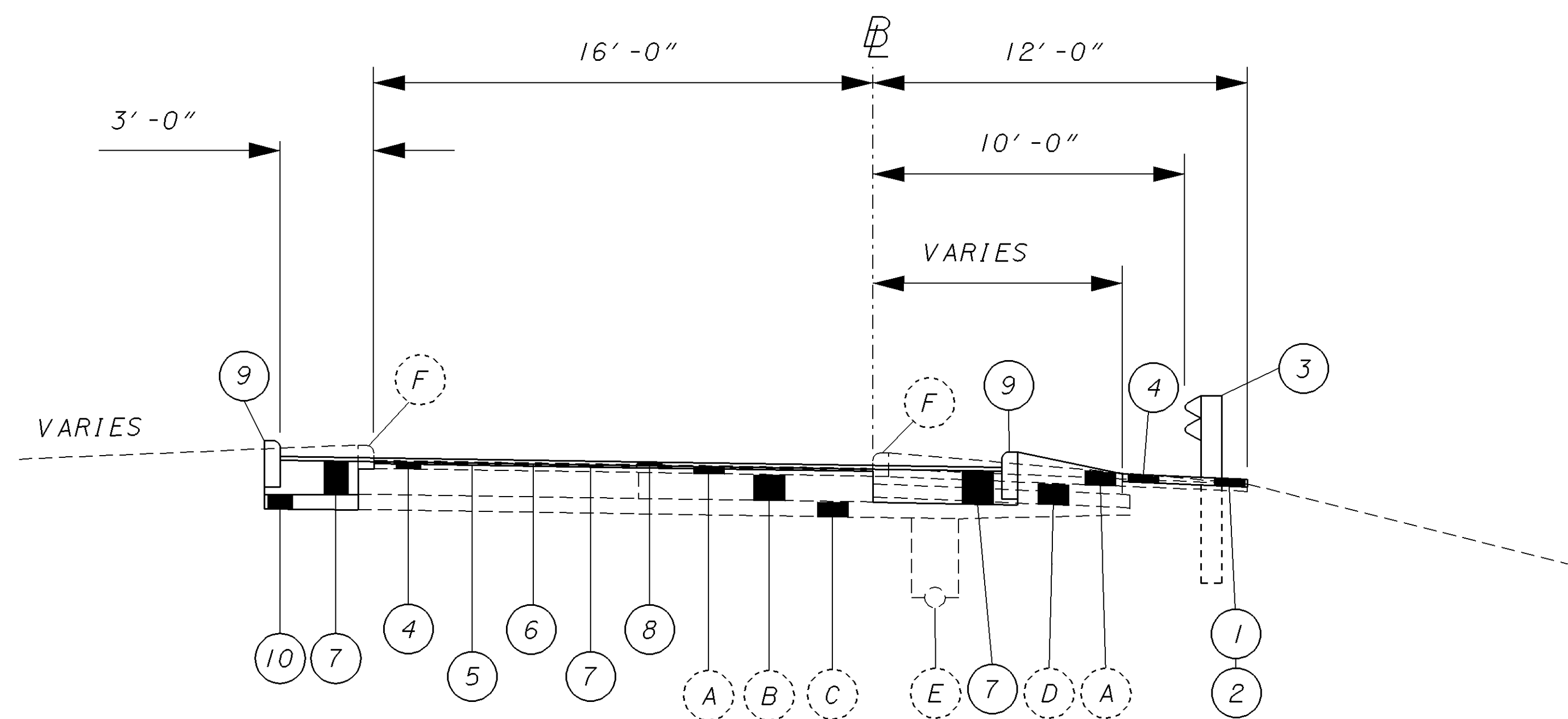


# RAMP 0 WIDENING DETAIL



SECTION A-A RAMP 0 WIDENING

**PROPOSED LEGEND**

- ① ITEM 203 - LINEAR GRADING, METHOD A
- ② ITEM 448 - 3" ASPHALT CONCRETE INTERMEDIATE COURSE, TYPE 1, PG64-22,  
(UNDER GUARDRAIL)
- ③ ITEM 606 - GUARDRAIL, TYPE 5
- ④ ITEM 254 - PAVEMENT PLANING, BITUMINOUS
- ⑤ ITEM 407 - TACK COAT
- ⑥ ITEM 407 - TACK COAT FOR INTERMEDIATE COURSE
- ⑦ ITEM 858 - 1/2" ASPHALT CONCRETE INTERMEDIATE COURSE, 9.5 MM, TYPE A (448)
- ⑧ ITEM 858 - 1 1/2" ASPHALT CONCRETE SURFACE COURSE, 12.5 MM, TYPE A (446)
- ⑨ ITEM 609 - CONCRETE CURB, TYPE 6
- ⑩ ITEM 304 - AGGREGATE BASE

**EXISTING LEGEND**

- Ⓐ ASPHALT OVERLAY (VARIABLE THICKNESS)
- Ⓑ 10" REINFORCED CONCRETE BASE
- Ⓒ SUBBASE
- Ⓓ BIT. AGGREGATE BASE OR AGGREGATE BASE
- Ⓔ UNDERDRAIN
- Ⓕ CONCRETE CURB, TYPE 2-A

I:\PROJECTS\PI19530\DGN\19530gmc.dgn 22-AUG-2001 10:44AM fkonopka

**RAMP 0 WIDENING DETAIL**

**LAK-2-6.12**

NOT TO SCALE