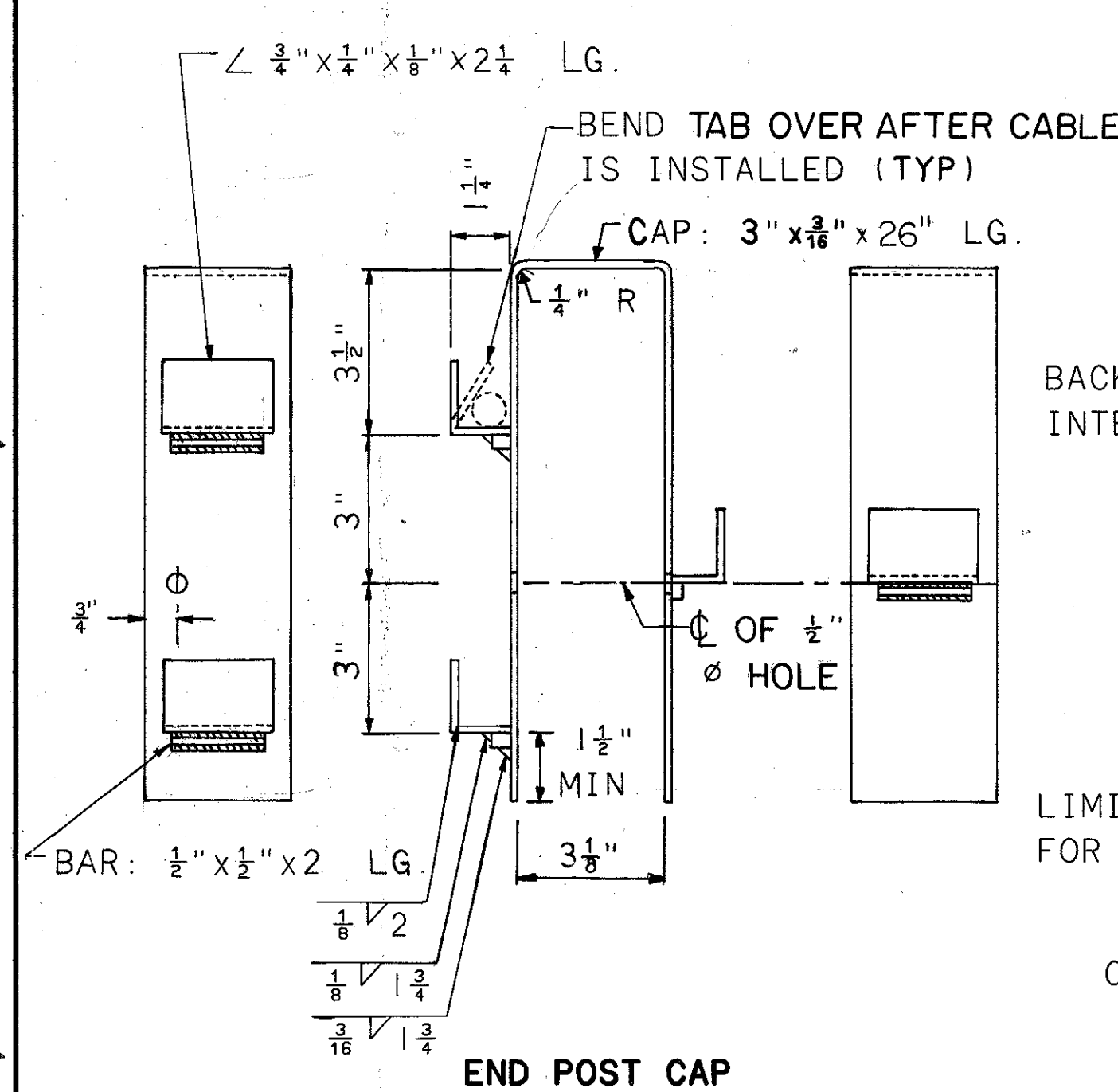


ANCHORAGE UNIT & CABLE SPLICE DETAILS

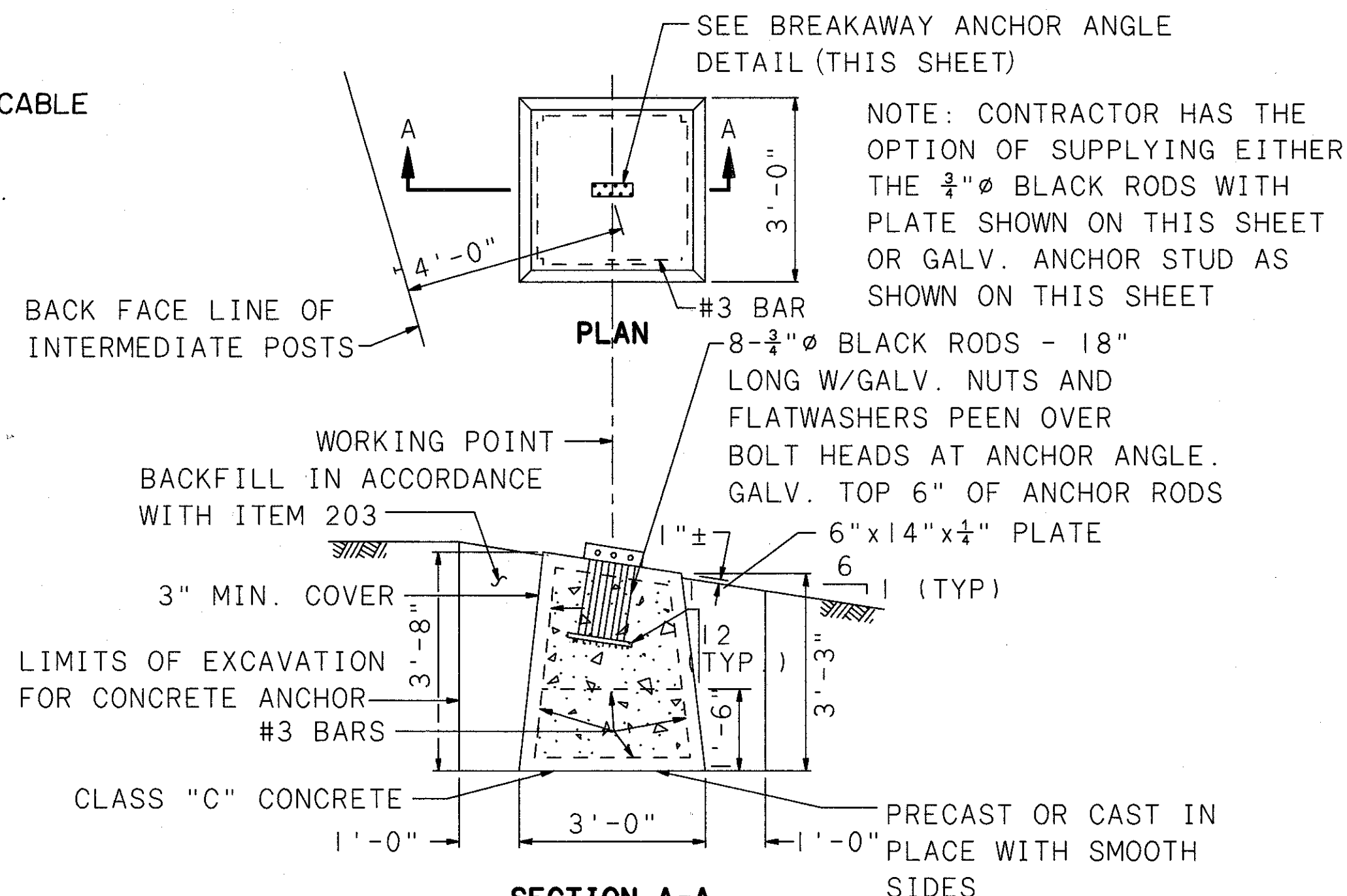
CALC BY	
DATE	
CHKD BY	
DATE	

LAK-2-5.96

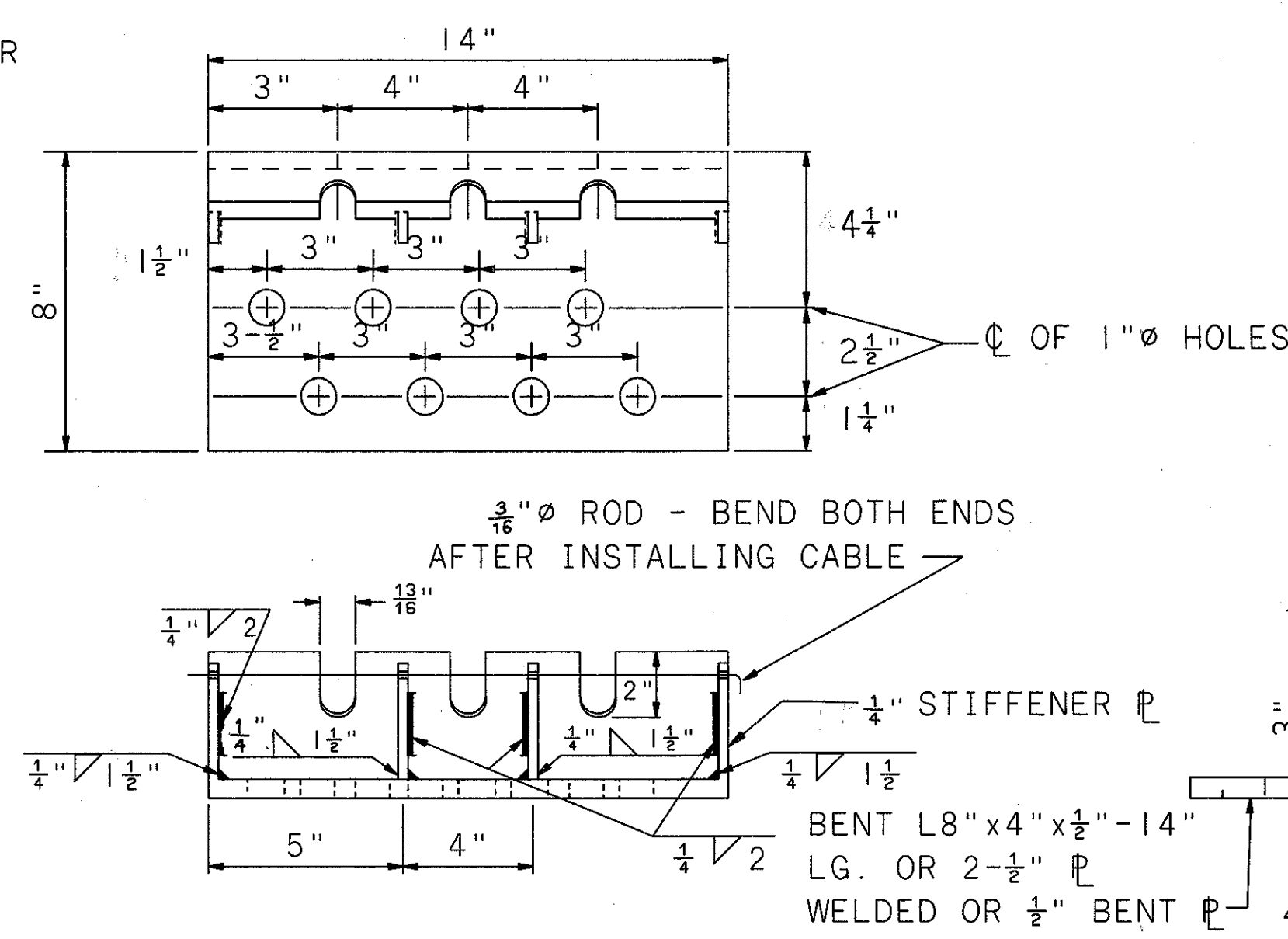
OHIO	12
FHWA REGION 5	31



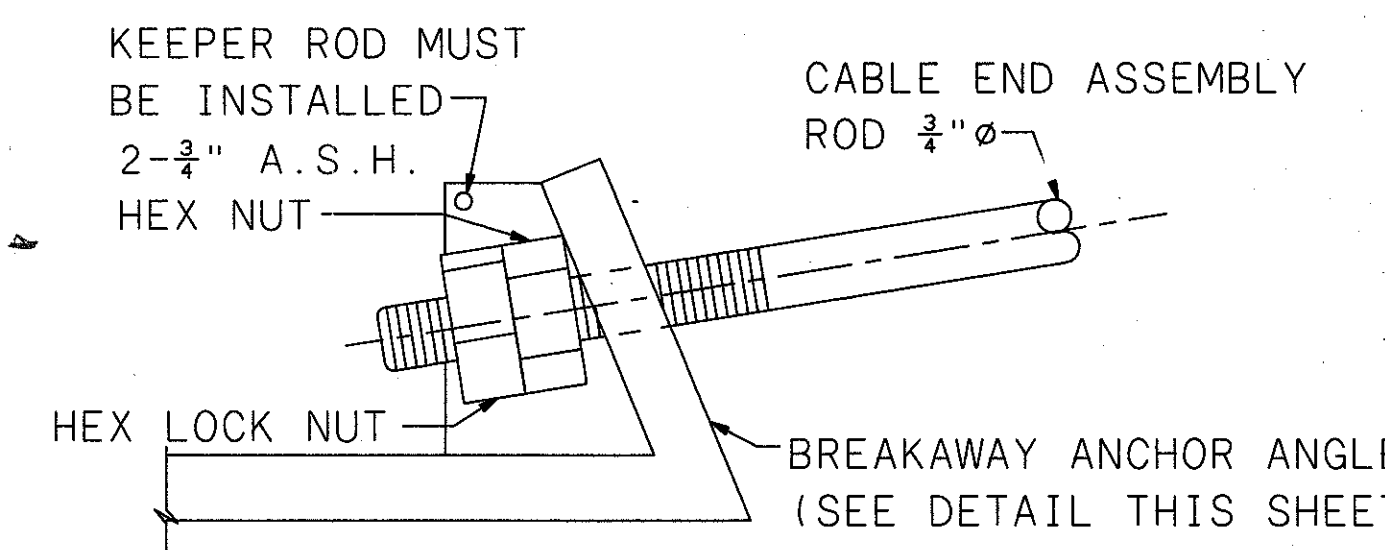
END POST CAP



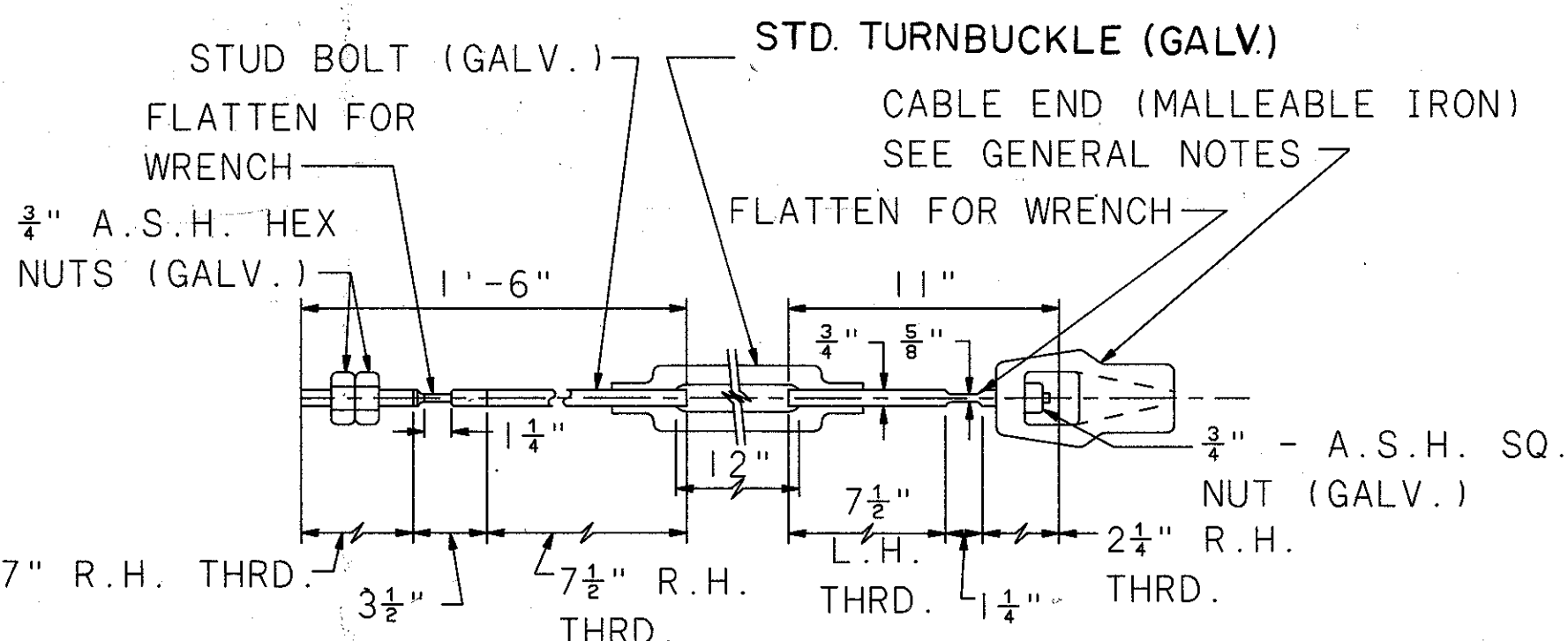
SECTION A-A CONCRETE ANCHOR DETAIL "F"



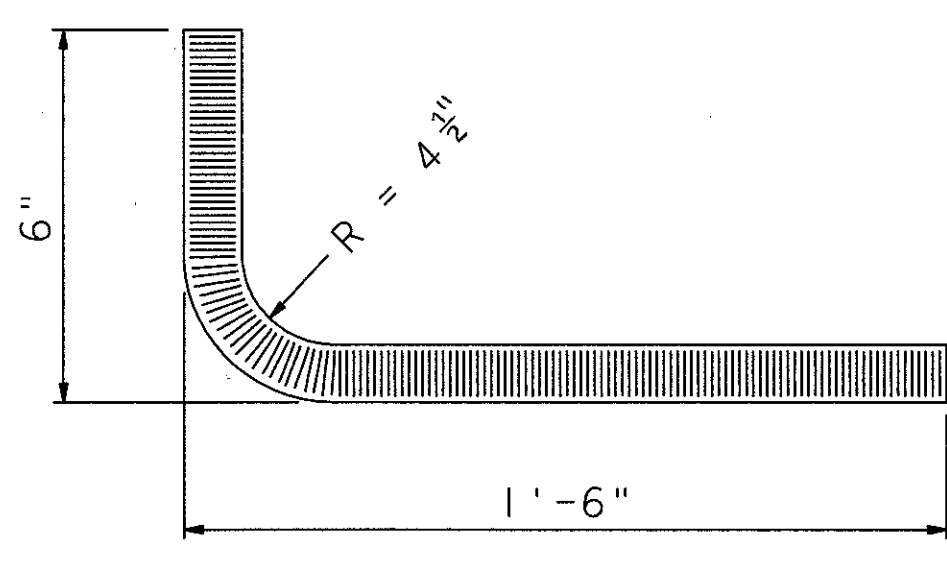
BREAKAWAY ANCHOR ANGLE



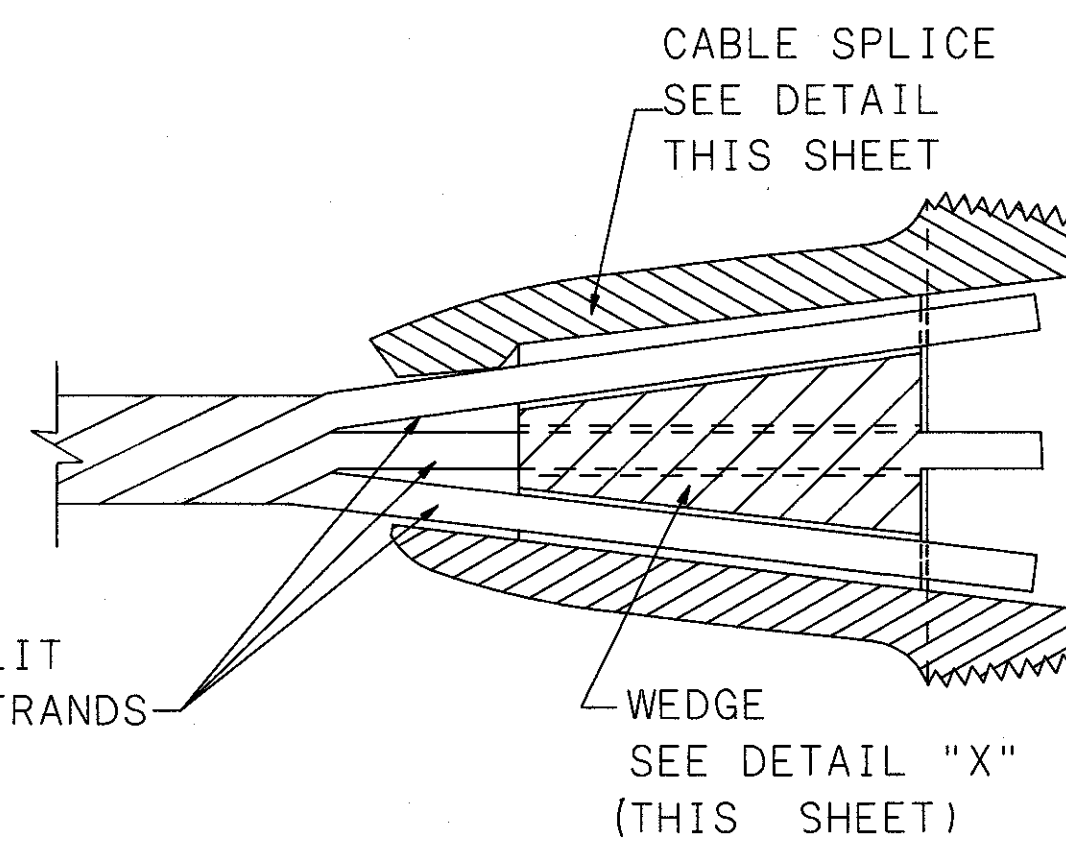
DETAIL "K" CABLE END ASSEMBLY ROD CONNECTION TO BREAKAWAY ANCHOR ANGLE



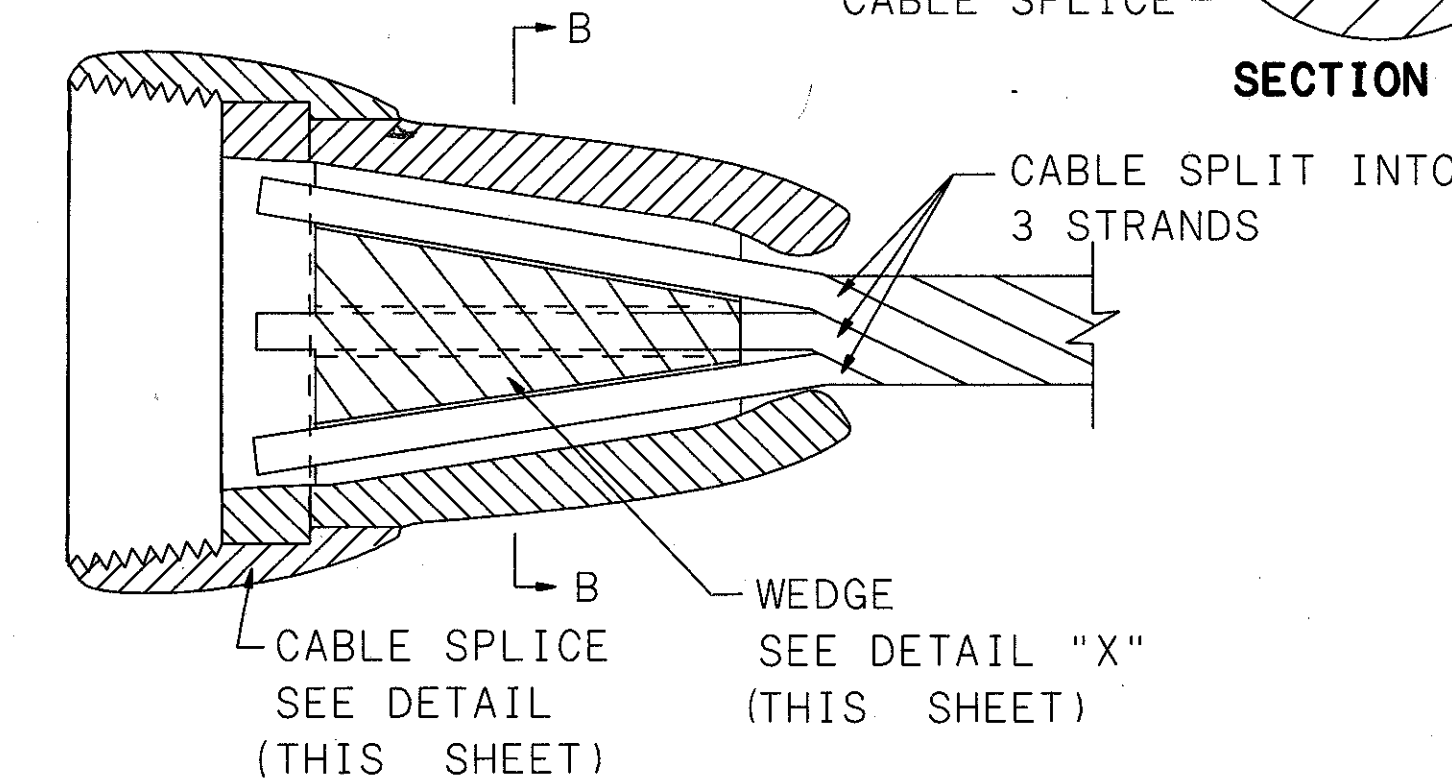
DETAIL "A" STEEL TURNBUCKLE CABLE END ASSEMBLY



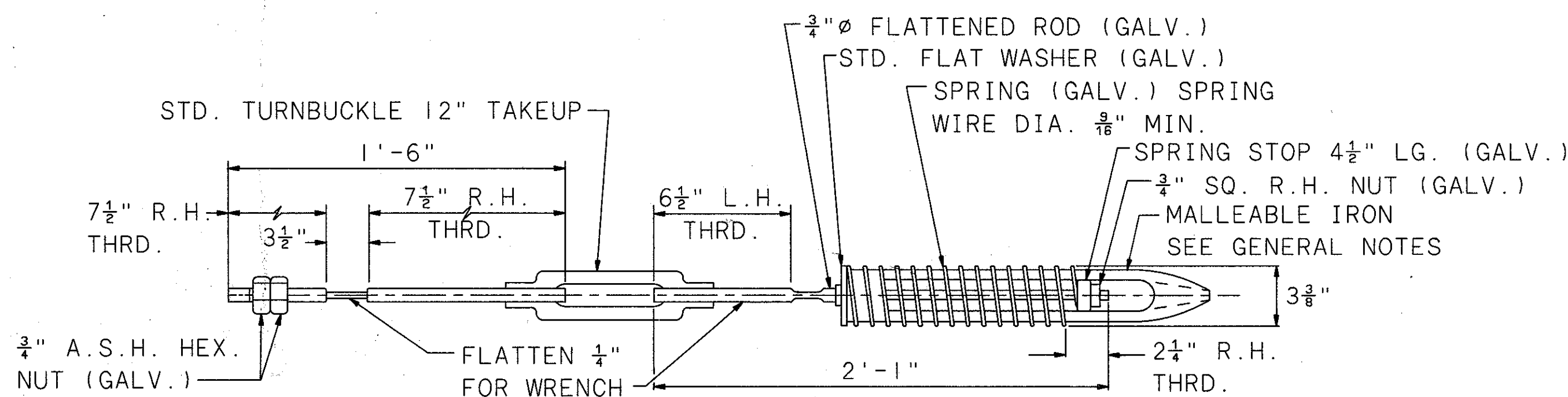
GALVANIZED ANCHOR STUD 3/4" x 1'-6" VERTLEG



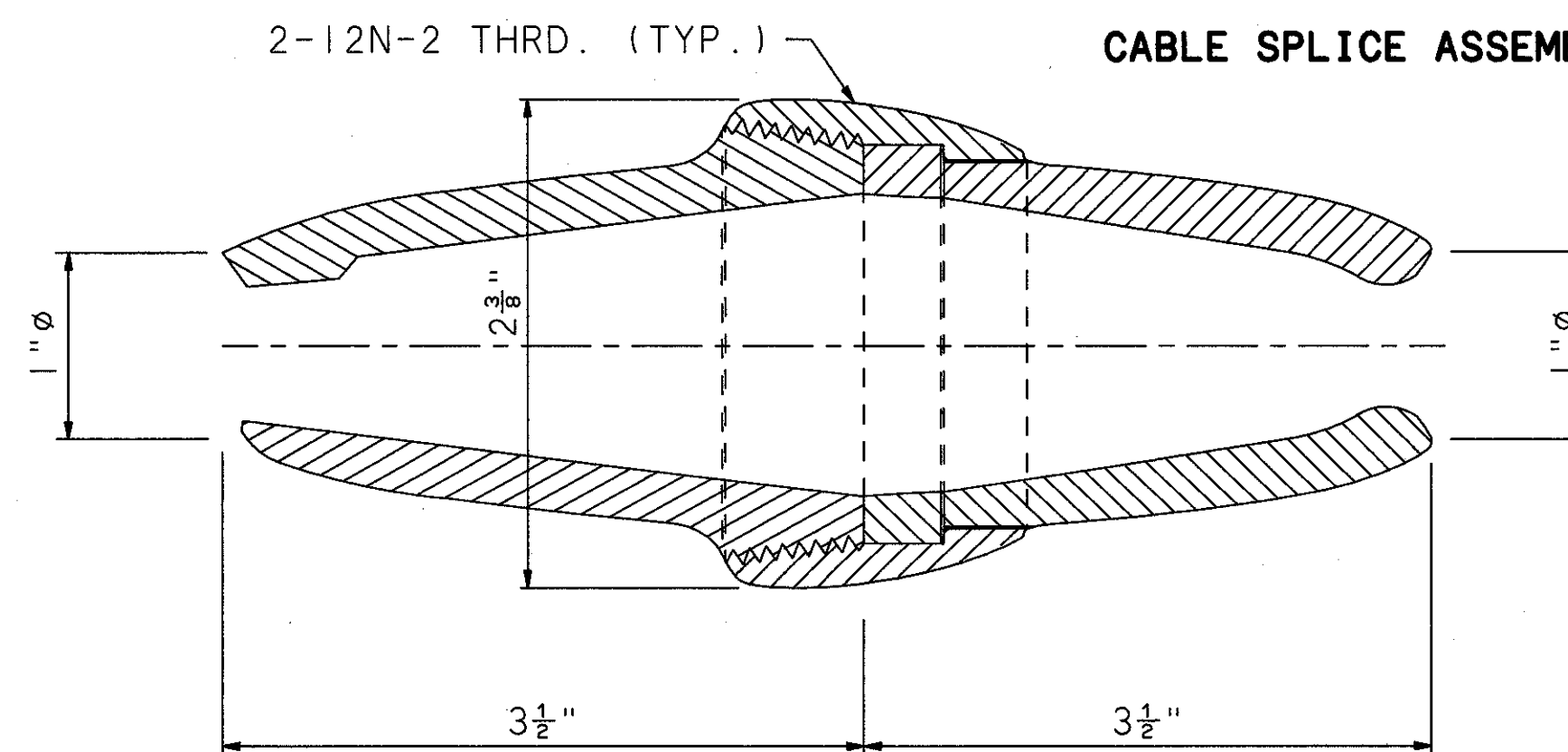
CABLE SPLICE ASSEMBLY DETAIL



SECTION B-B

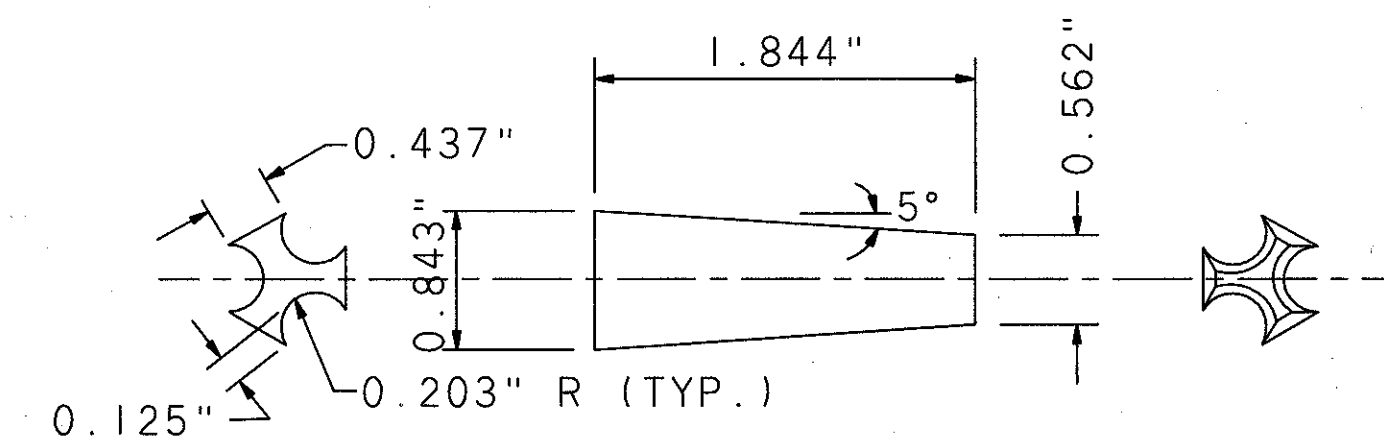


DETAIL "B" SPRING CABLE END ASSEMBLY WITH TURNBUCKLE (COMPENSATING DEVICE)



CABLE SPLICE

NOTE: USE WITH WEDGE AS SHOWN IN DETAIL "X" (THIS SHEET) MATERIAL MALLEABLE IRON ASTM. A-47 GR. 32510



DETAIL "X" TYPICAL WEDGE FOR ALL SPLICES & CABLE FITTINGS