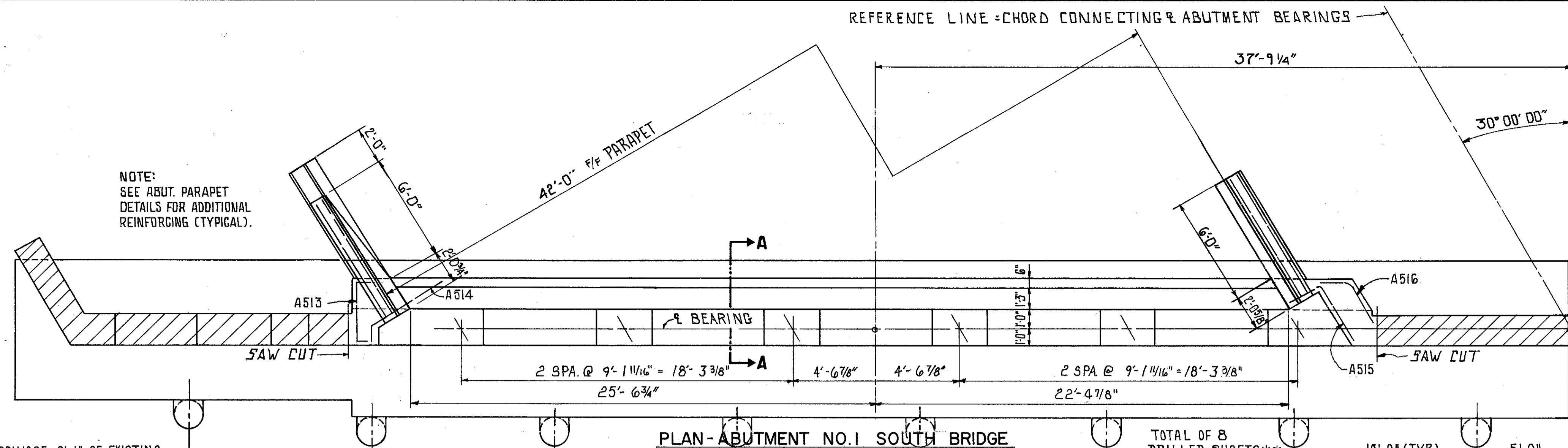


LAKE COUNTY  
LAK-2-5.30

\*ADDITIONAL ESTIMATED QUANTITY; SEE THIS SHEET AND SHEET 7.

ITEM	TOTAL	UNIT	DESCRIPTION	ABUTMENT
SPECIAL	18	EA.	DRILLED SHAFT	18

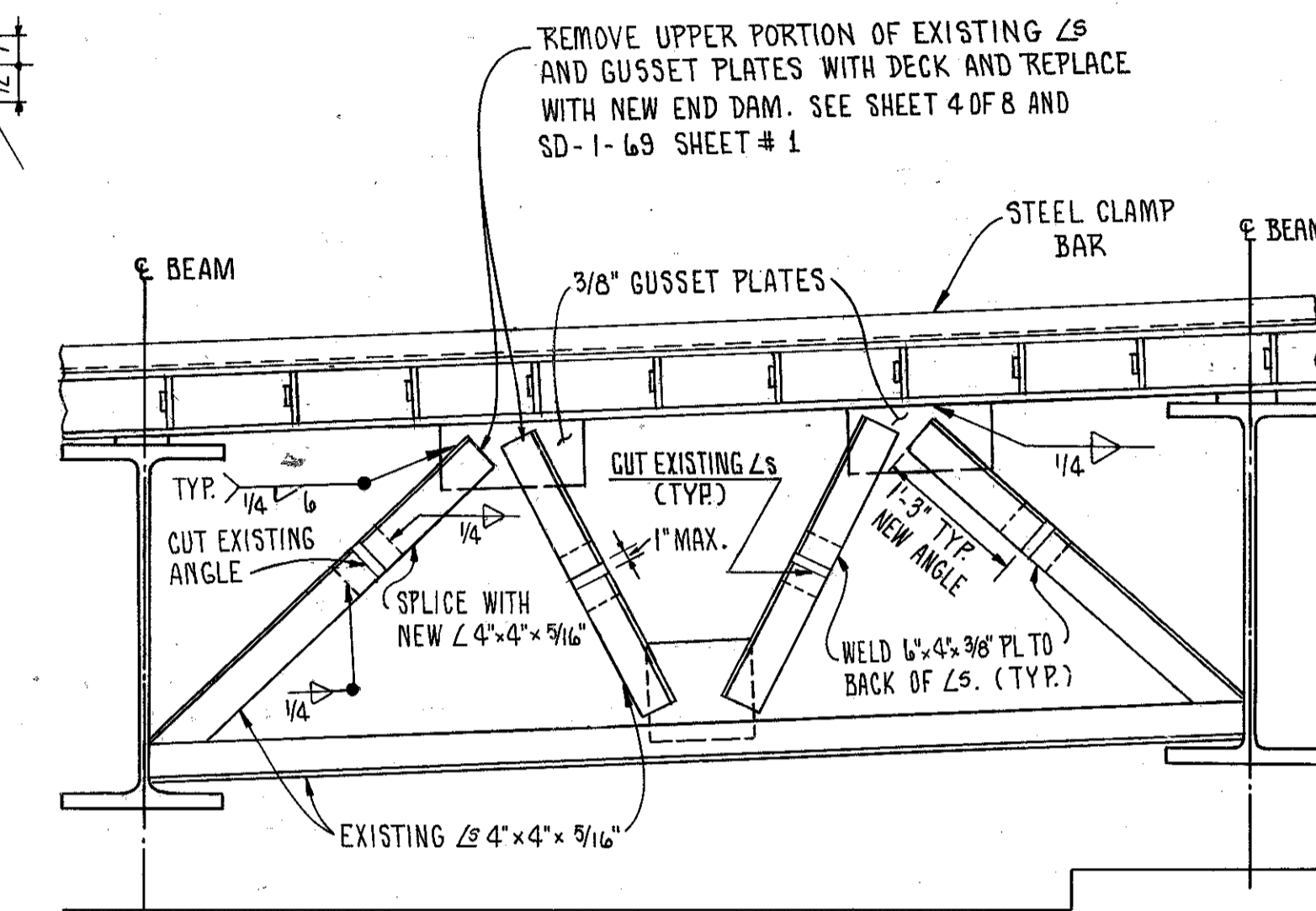
NOTE: SEE STANDARD SPECIFICATION ACI 336.1



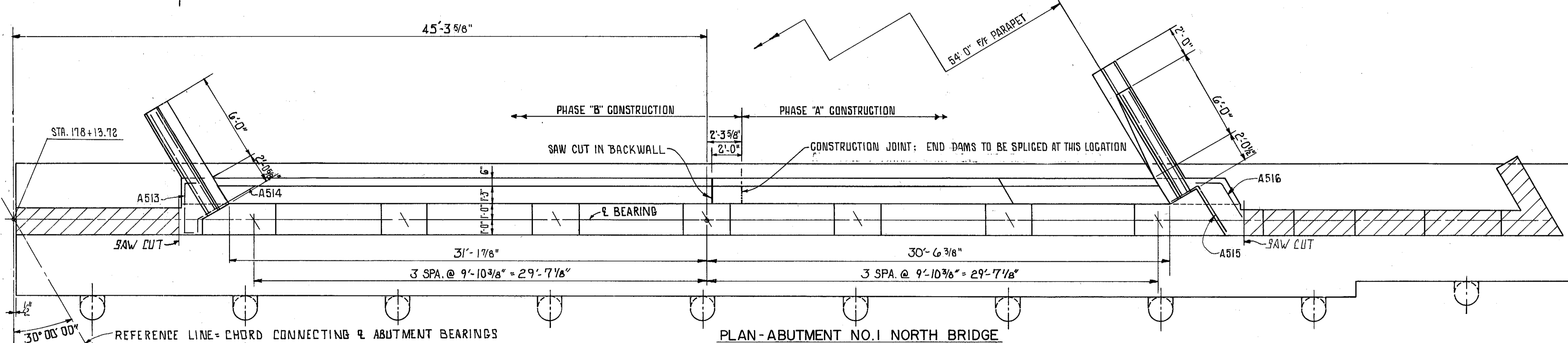
NOTE:  
SEE ABUT. PARAPET  
DETAILS FOR ADDITIONAL  
REINFORCING (TYPICAL).

NOTE:  
CONTRACTOR TO SALVAGE 2'-1\"/>

STA. 178+13.72



TYPICAL END CROSSFRAME  
(LOOKING TOWARDS ABUTMENT)



PHASE "B" CONSTRUCTION PHASE "A" CONSTRUCTION

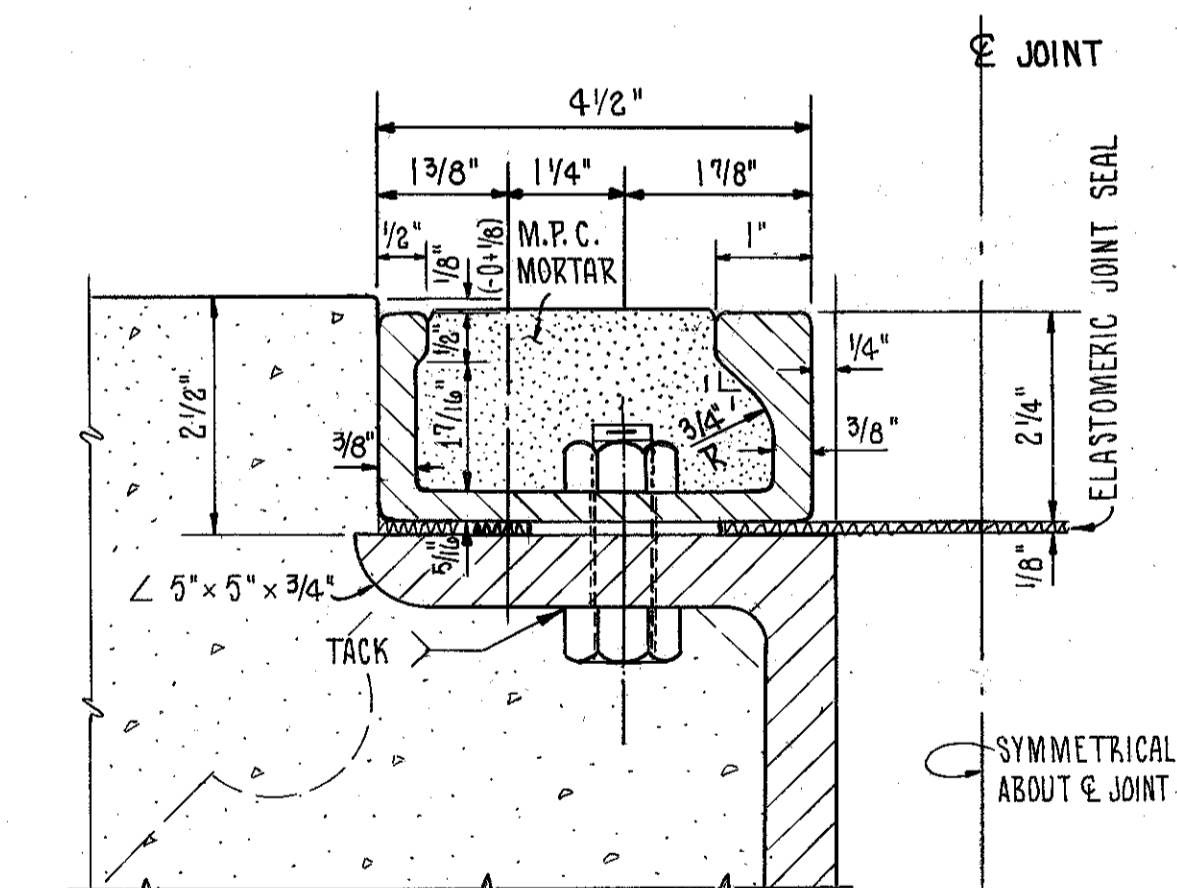
SAW CUT IN BACKWALL CONSTRUCTION JOINT; END DAMS TO BE SPLICED AT THIS LOCATION

NOTES

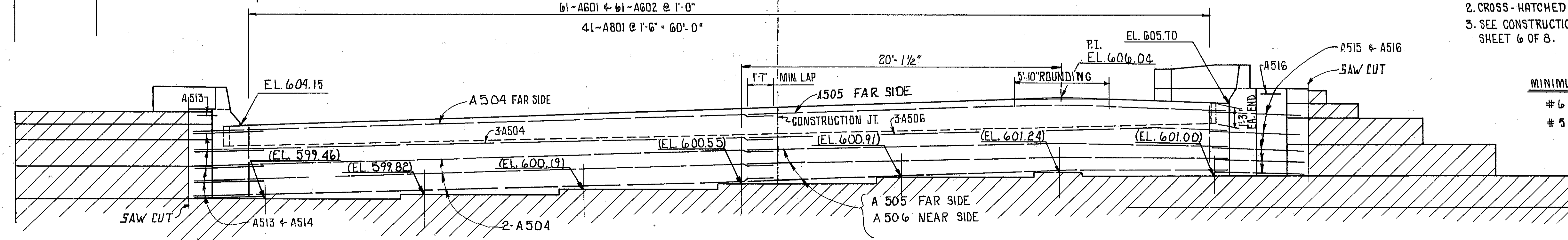
1. FOR SECTION A-A SEE SHEET 6 OF 8.
2. CROSS-HATCHED AREA TO REMAIN AS IS.
3. SEE CONSTRUCTION JOINT DETAIL ON SHEET 6 OF 8.

MINIMUM BAR LAP

- # 6 = 1'-11"
- # 5 = 1'-7"



EXTRUDED STEEL CLAMP BAR



ELEVATION - ABUTMENT NO.1 NORTH BRIDGE

\*\* FOR ADDITIONAL DETAILS OF "ITEM SPECIAL - DRILLED SHAFTS" SEE SHEET 7 OF 8.

FRANKLIN CONSULTANTS INC.		5 / 8
Consulting Engineers		
COLUMBUS, OHIO		
<b>ABUTMENT BACKWALL DETAILS</b>		
BRIDGE No. LAK-2-0530		
S.R. 2 OVER CHAGRIN RIVER		
LAKE COUNTY S.R. 2		
DESIGNED	DRAWN	TRACED
SM	HM	TB
CHECKED	REVIEWED	DATE
HT	JF	1/4-80
REVIS		

BRUNING 44-132-30645-1