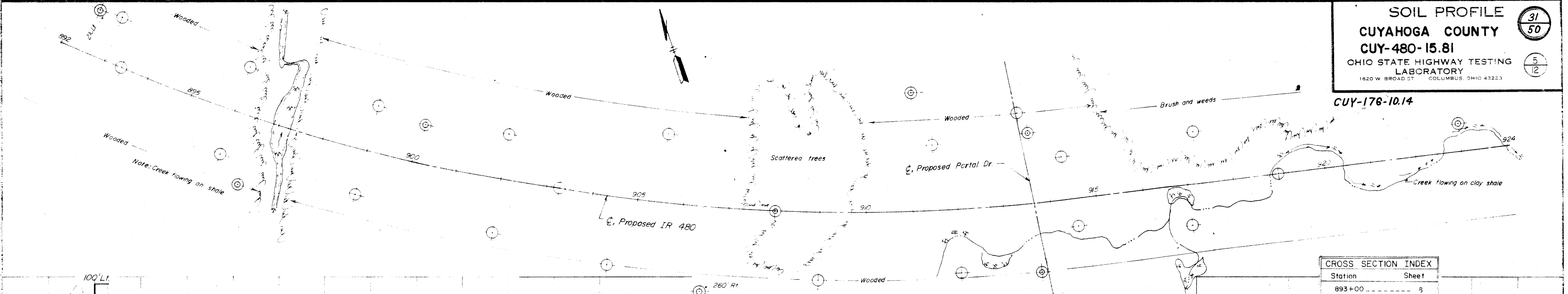
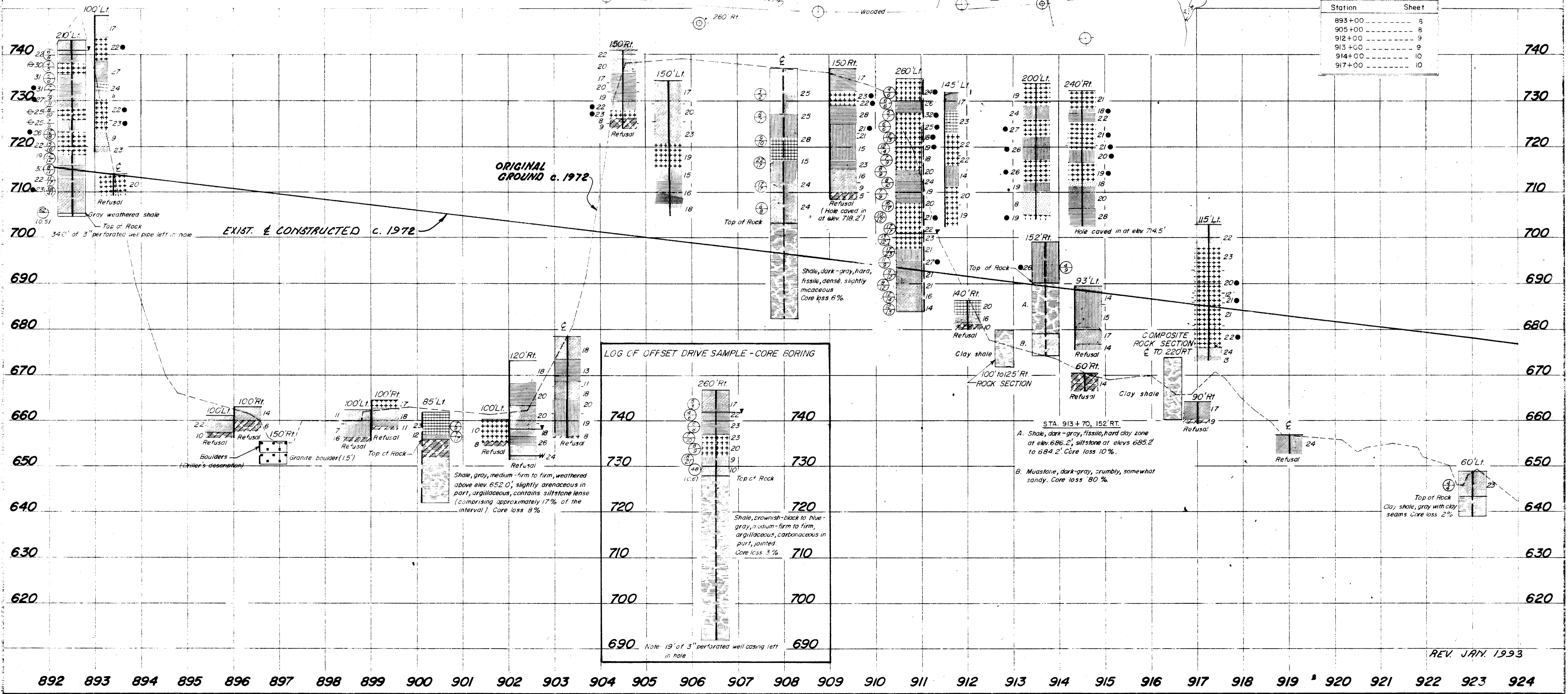


CUY-176-10.14



| Station | Sheet |
|---------|-------|
| 893+00  | 5     |
| 905+00  | 8     |
| 912+00  | 9     |
| 913+00  | 9     |
| 914+00  | 10    |
| 917+00  | 10    |



ORIGINAL GROUND c. 1972

EXIST. & CONSTRUCTED c. 1972

**LOG OF OFFSET DRIVE SAMPLE - CORE BORING**

740  
730  
720  
710  
700  
690

19' of 3" perforated well casing left in hole

STA. 913+70, 152' RT.  
 A. Shale, dark-gray, fissile, hard clay zone at elev. 686.2', siltstone at elevs 685.2' to 684.2'. Core loss 10%.  
 B. Muastone, dark-gray, crumbly, somewhat sandy. Core loss 80%.

COMPOSITE ROCK SECTION  
 E TO 220RT