

RAMP A
CURVE DATA
P.I. Sta. 10+86.16
 $\Delta = 3^\circ 41' 52.34''$ Lt.
D = 2°00'00"
R = 2864.79'
L = 184.89'
T = 92.48'

WILLIAM & CATHERINE MAHON
Cont. 0.20 Ac.
P.R.O. = 0.11 Ac.

CONSTR. & DATA
P.I. Sta. 39 + 64.50
 $\Delta = 2^\circ 51' 54.9''$ Rt.
NO CURVE

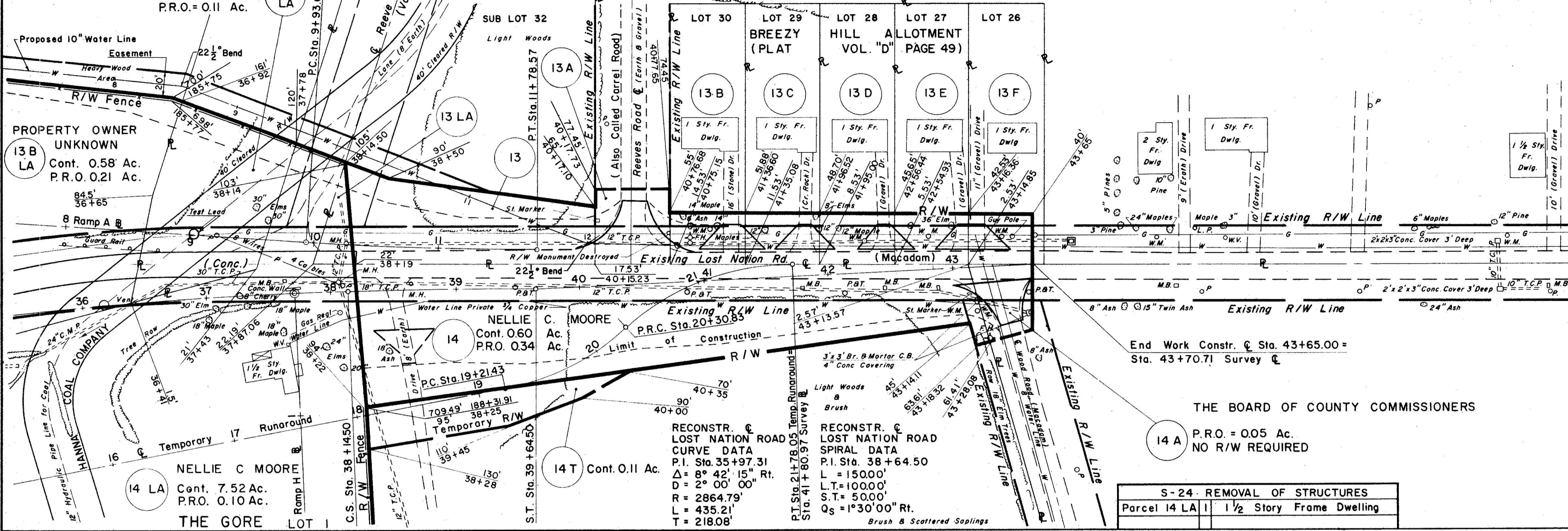
CONSTR. & DATA
P.I. Sta. 43 + 65.50
 $\Delta = 2^\circ 51' 54.9''$ Rt.
NO CURVE

Lake County
T. 10 N.

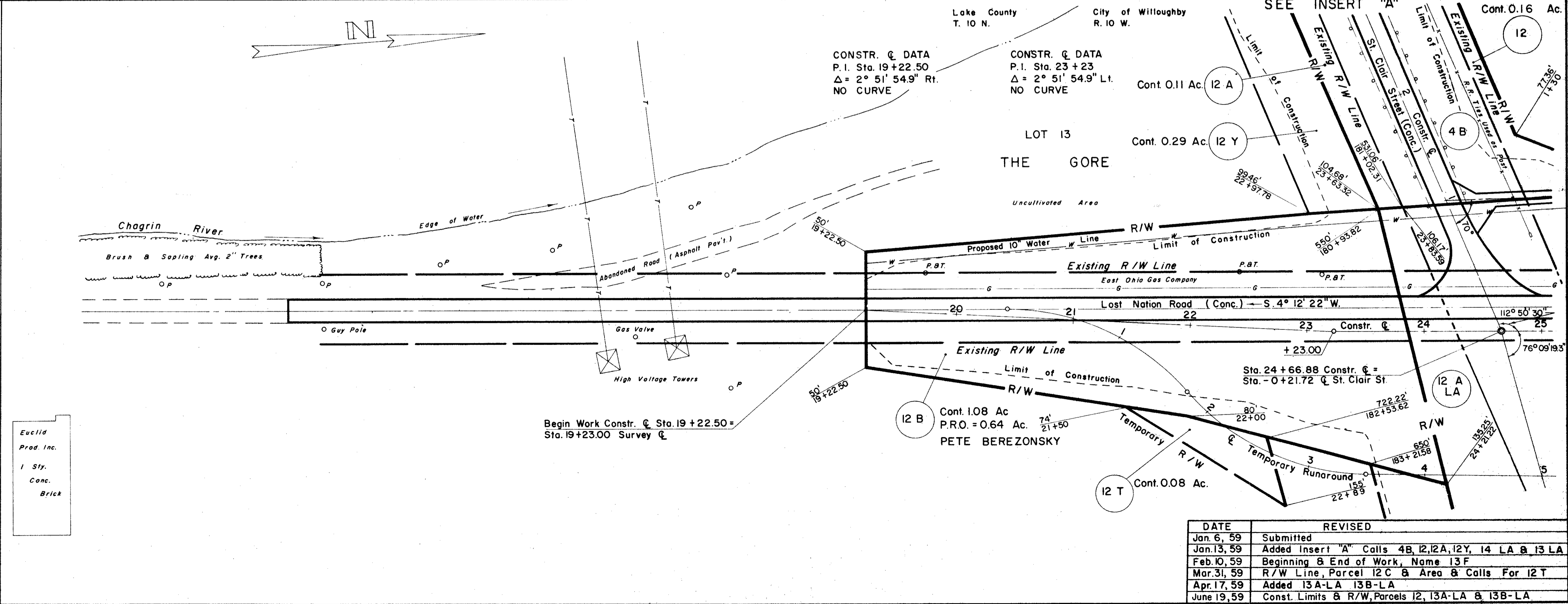
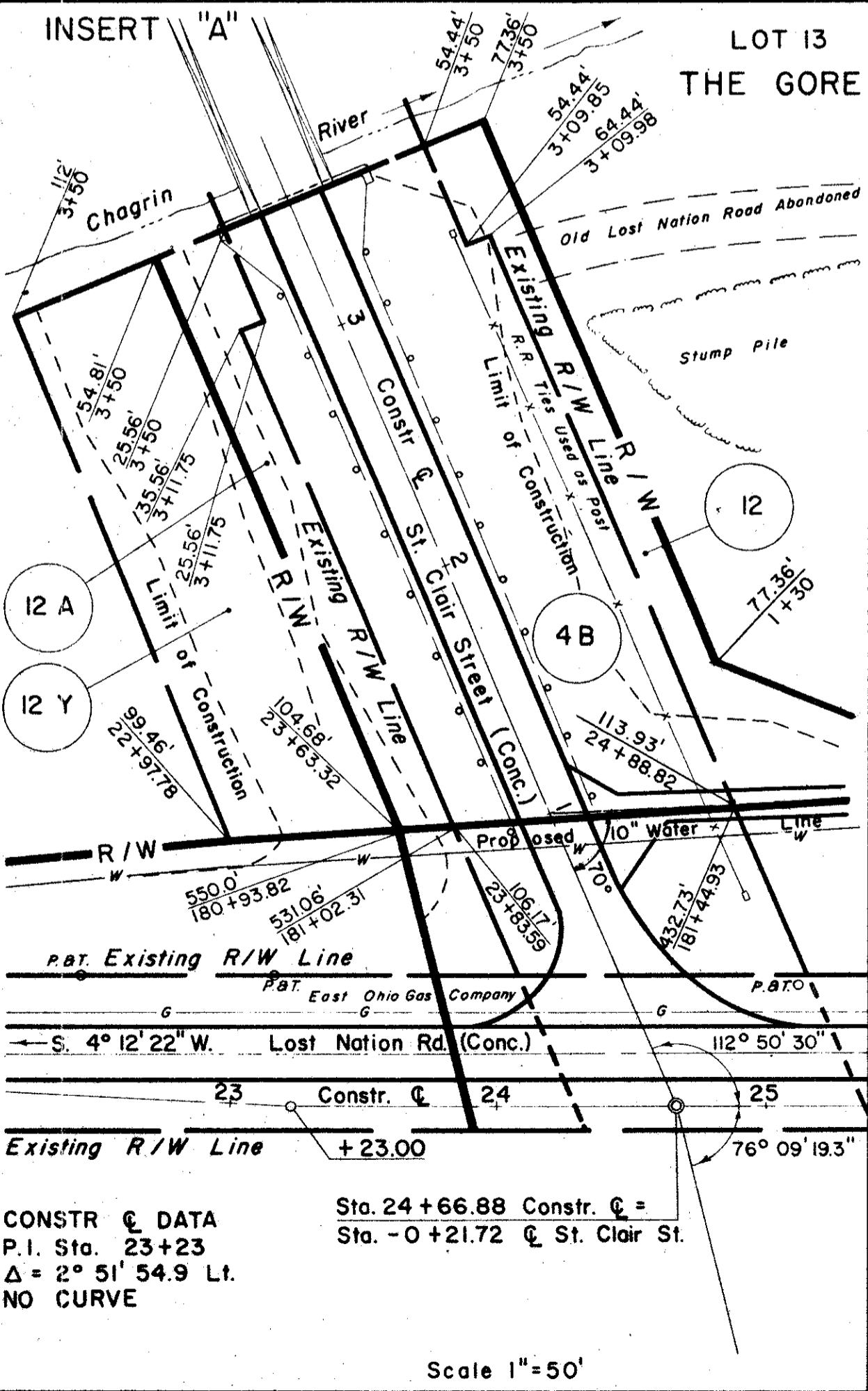
City of Willoughby
R. 10 W.

FED. RD. DIVISION	STATE	PROJECT	291
2	OHIO	F-U-329 (15)	

LAK - 2 - 4.42
R/W PLAN
LIMITED ACCESS



- THOMAS M. MOORE Jr.
13 LA Cont. 0.011 Ac.
P.R.O. 0.02 Ac.
- THOMAS M. MOORE Jr.
13 Cont. 0.14 Ac.
P.R.O. 0.14 Ac.
- THE BOARD OF COUNTY COMMISSIONERS
13 A P.R.O. = 0.08 Ac.
NO R/W REQUIRED
- THOMAS L. & MARY T. BEEMAN
13 B Cont. 0.01 Ac.
P.R.O. 0.04 Ac.
- QUIDO C. & WANDA MORGILLO
13 C Cont. 0.01 Ac.
P.R.O. 0.04 Ac.
- JOSEPH & PATRICIA K. PETTY
13 D Cont. 0.01 Ac.
P.R.O. 0.04 Ac.
- THEODORE E. & JEAN A. JOHNSTON
13 E Cont. 0.01 Ac.
P.R.O. 0.04 Ac.
- GEORGE B. & H. EVELYN McCLELLAN
13 F Cont. 0.01 Ac.
P.R.O. 0.03 Ac.



DATE	REVISED
Jan. 6, 59	Submitted
Jan. 13, 59	Added Insert 'A' Calls 4B, 12A, 12Y, 14 LA & 13 LA
Feb. 10, 59	Beginning & End of Work, Name 13F
Mar. 31, 59	R/W Line, Parcel 12 C & Area & Calls For 12 T
Apr. 17, 59	Added 13A-LA 13B-LA
June 19, 59	Const. Limits & R/W, Parcels 12, 13A-LA & 13B-LA