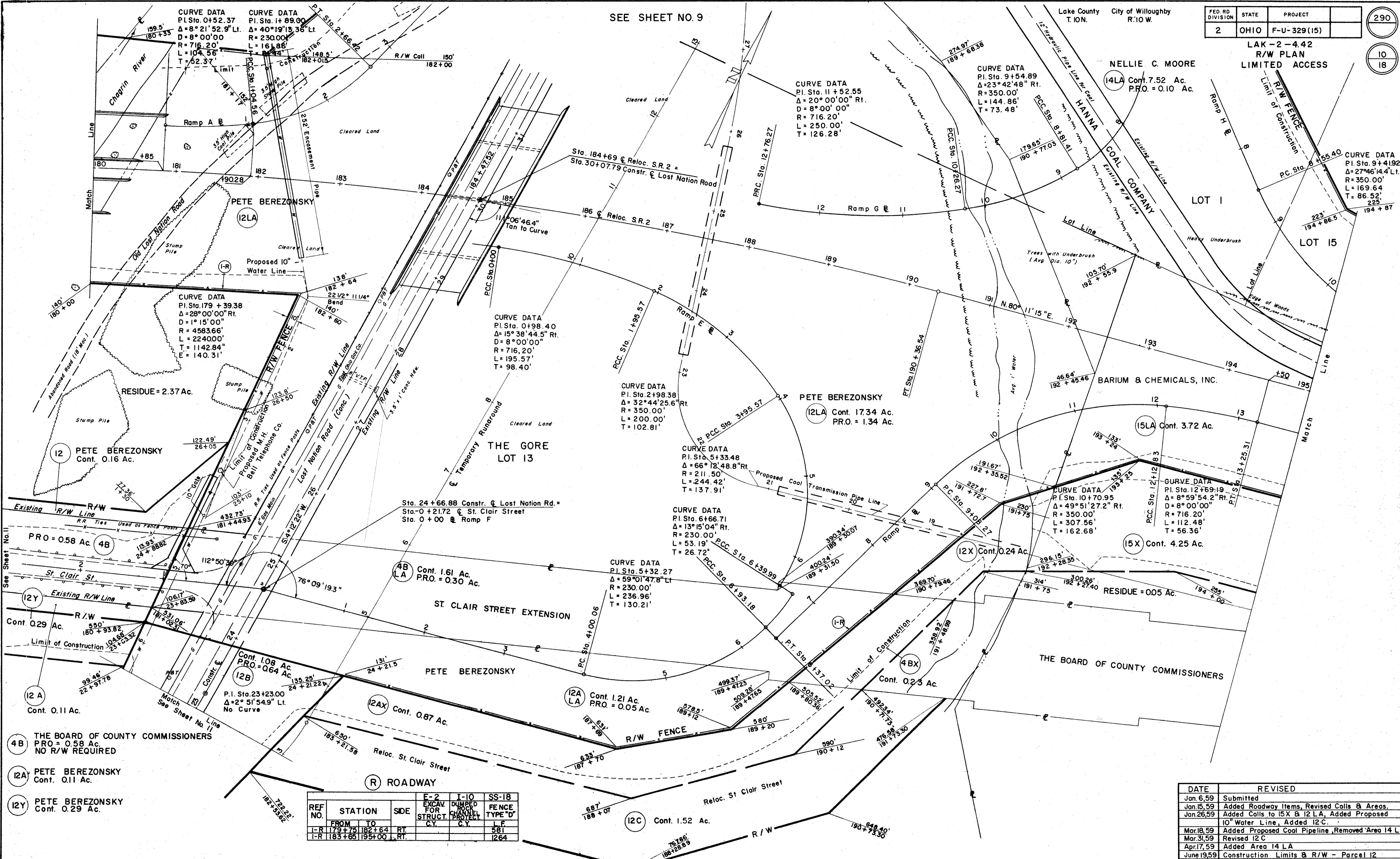


SEE SHEET NO. 9

FED. RD. DIVISION	STATE	PROJECT	290
2	OHIO	F-U-329(15)	

LAK-2-4.42  
R/W PLAN  
LIMITED ACCESS



CURVE DATA  
P.I. Sta. 0+52.37  
Δ = 8° 21' 52.9" Lt.  
D = 8° 00' 00"  
R = 716.20'  
L = 104.56'  
T = 52.37'

CURVE DATA  
P.I. Sta. 1+89.00  
Δ = 40° 19' 13.36" Lt.  
R = 230.00'  
L = 161.85'  
T = 84.43'

CURVE DATA  
P.I. Sta. 11+52.55  
Δ = 20° 00' 00" Rt.  
D = 8° 00' 00"  
R = 716.20'  
L = 250.00'  
T = 126.28'

CURVE DATA  
P.I. Sta. 9+54.89  
Δ = 23° 42' 48" Rt.  
R = 350.00'  
L = 144.86'  
T = 73.48'

CURVE DATA  
P.I. Sta. 9+41.92  
Δ = 27° 46' 14.4" Lt.  
R = 350.00'  
L = 169.64'  
T = 86.52'

CURVE DATA  
P.I. Sta. 179+39.38  
Δ = 28° 00' 00" Rt.  
D = 1° 15' 00"  
R = 4583.66'  
L = 2240.00'  
T = 1142.84"  
E = 140.31'

CURVE DATA  
P.I. Sta. 0498.40  
Δ = 15° 38' 44.5" Rt.  
D = 8° 00' 00"  
R = 716.20'  
L = 195.57'  
T = 98.40'

CURVE DATA  
P.I. Sta. 2+98.38  
Δ = 32° 44' 25.6" Rt.  
R = 350.00'  
L = 200.00'  
T = 102.81'

CURVE DATA  
P.I. Sta. 5+33.48  
Δ = 66° 12' 48.8" Rt.  
R = 211.50'  
L = 244.42'  
T = 137.91'

CURVE DATA  
P.I. Sta. 6+66.71  
Δ = 13° 15' 04" Rt.  
R = 230.00'  
L = 53.19'  
T = 26.72'

CURVE DATA  
P.I. Sta. 5+32.27  
Δ = 59° 01' 47.8" Lt.  
R = 230.00'  
L = 236.96'  
T = 130.21'

CURVE DATA  
P.I. Sta. 10+70.95  
Δ = 49° 51' 27.2" Rt.  
R = 350.00'  
L = 307.56'  
T = 162.68'

CURVE DATA  
P.I. Sta. 12+69.19  
Δ = 8° 59' 54.2" Rt.  
D = 8° 00' 00"  
R = 716.20'  
L = 112.48'  
T = 56.36'

- (4B) THE BOARD OF COUNTY COMMISSIONERS  
PRO = 0.58 Ac.  
NO R/W REQUIRED
- (12A) PETE BEREZONSKY  
Cont. 0.11 Ac.
- (12Y) PETE BEREZONSKY  
Cont. 0.29 Ac.

REF. NO.	STATION	SIDE	E-2 EXCAV. FOR STRUCT. C.Y.	I-10 DUMPED CRACKS PROTECT. C.Y.	SS-18 FENCE TYPE 'D' L.F.
I-R	179+75	RT.			581
I-R	183+65	LT.			1264

DATE	REVISED
Jan. 6, 59	Submitted
Jan. 15, 59	Added Roadway Items, Revised Calls & Areas.
Jan. 26, 59	Added Calls to 15X & 12 LA, Added Proposed 10" Water Line, Added 12C.
Mar. 18, 59	Added Proposed Coal Pipeline, Removed Area 14 LA
Mar. 31, 59	Revised 12C
Apr. 17, 59	Added Area 14 LA
June 19, 59	Construction Limits & R/W - Parcel 12