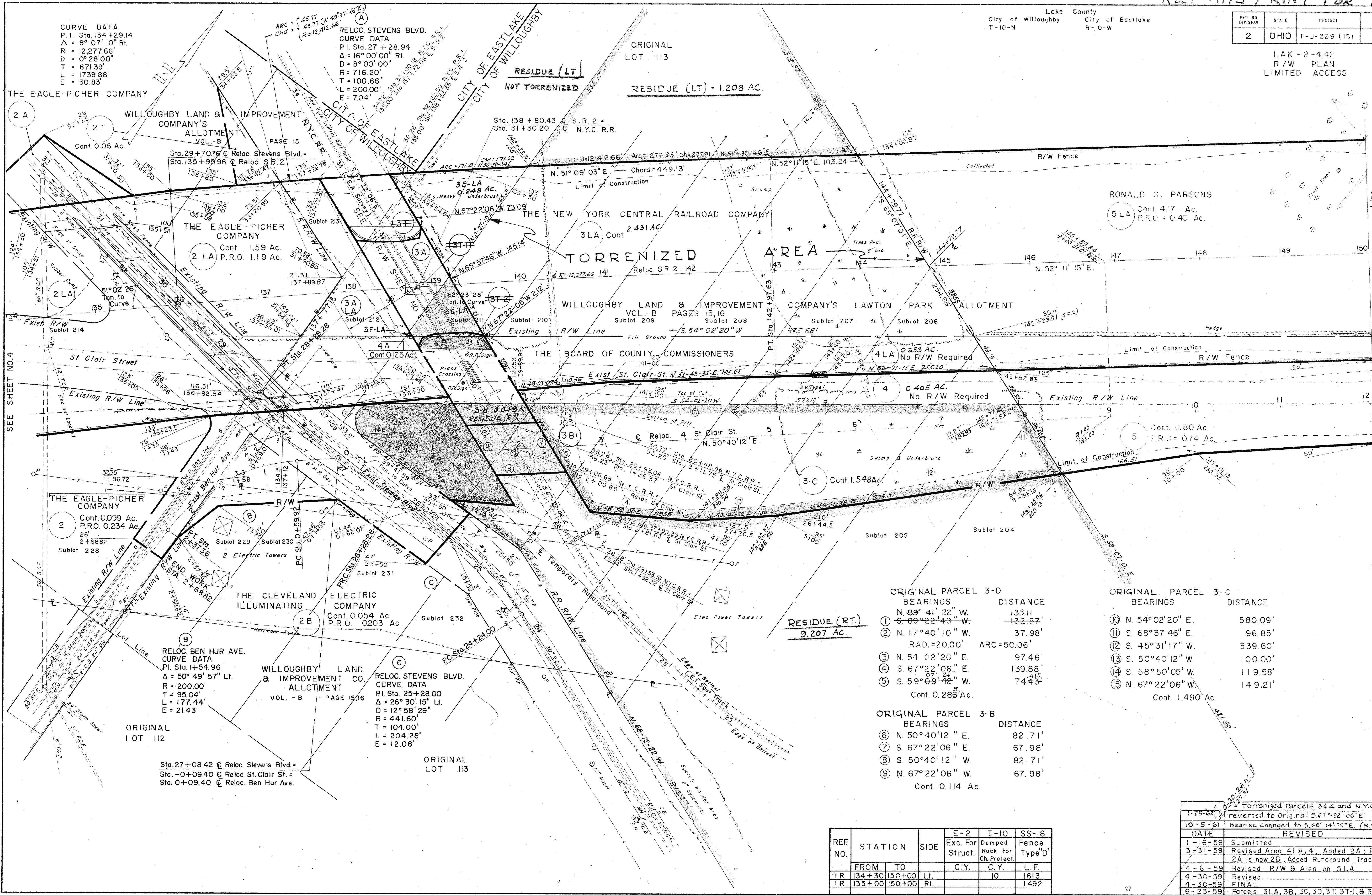


FED. RD. DIVISION	STATE	PROJECT	286
2	OHIO	F-J-329 (15)	5A 18

LAK-2-4.42
R/W PLAN
LIMITED ACCESS



ORIGINAL PARCEL 3-D

BEARINGS	DISTANCE
① N. 89° 41' 22" W.	133.11'
② S. 89° 22' 46" W.	132.57'
③ N. 17° 40' 10" W.	37.98'
RAD. = 20.00' ARC = 50.06'	
④ N. 54° 02' 20" E.	97.46'
⑤ S. 67° 22' 06" E.	139.88'
⑥ S. 59° 09' 42" W.	74.43'

Cont. 0.286 Ac.

ORIGINAL PARCEL 3-C

BEARINGS	DISTANCE
⑩ N. 54° 02' 20" E.	580.09'
⑪ S. 68° 37' 46" E.	96.85'
⑫ S. 45° 31' 17" W.	339.60'
⑬ S. 50° 40' 12" W.	100.00'
⑭ S. 58° 50' 05" W.	119.58'
⑮ N. 67° 22' 06" W.	149.21'

Cont. 1.490 Ac.

ORIGINAL PARCEL 3-B

BEARINGS	DISTANCE
⑥ N. 50° 40' 12" E.	82.71'
⑦ S. 67° 22' 06" E.	67.98'
⑧ S. 50° 40' 12" W.	82.71'
⑨ N. 67° 22' 06" W.	67.98'

Cont. 0.114 Ac.

RESIDUE (RT)
9.207 AC.

REF. NO.	STATION		SIDE	E-2	I-10	SS-18
	FROM	TO		Exc. For Struct.	Dumped Rock For Ch. Protect.	Fence Type "D"
TR	134+30	150+00	Lt.		10	1613
TR	135+00	150+00	Rt.			1492

1-25-62	Torrenized Parcels 3 & 4 and N.Y.C.R.R. & Bearing reverted to Original S. 67° 22' 06" E.
10-5-61	Bearing changed to S. 66° 14' 59" E. (N.Y.C. RR)
DATE REVISED	
1-16-59	Submitted
3-31-59	Revised Area 4LA, 4; Added 2A; Previously shown 2A is now 2B. Added Runaround Track (5LA to be rev.)
4-6-59	Revised R/W & Area on 5LA
4-30-59	Revised
4-30-59	FINAL
6-23-59	Parcels 3LA, 3B, 3C, 3D, 3T, 3T-1, & 3T-2 Added