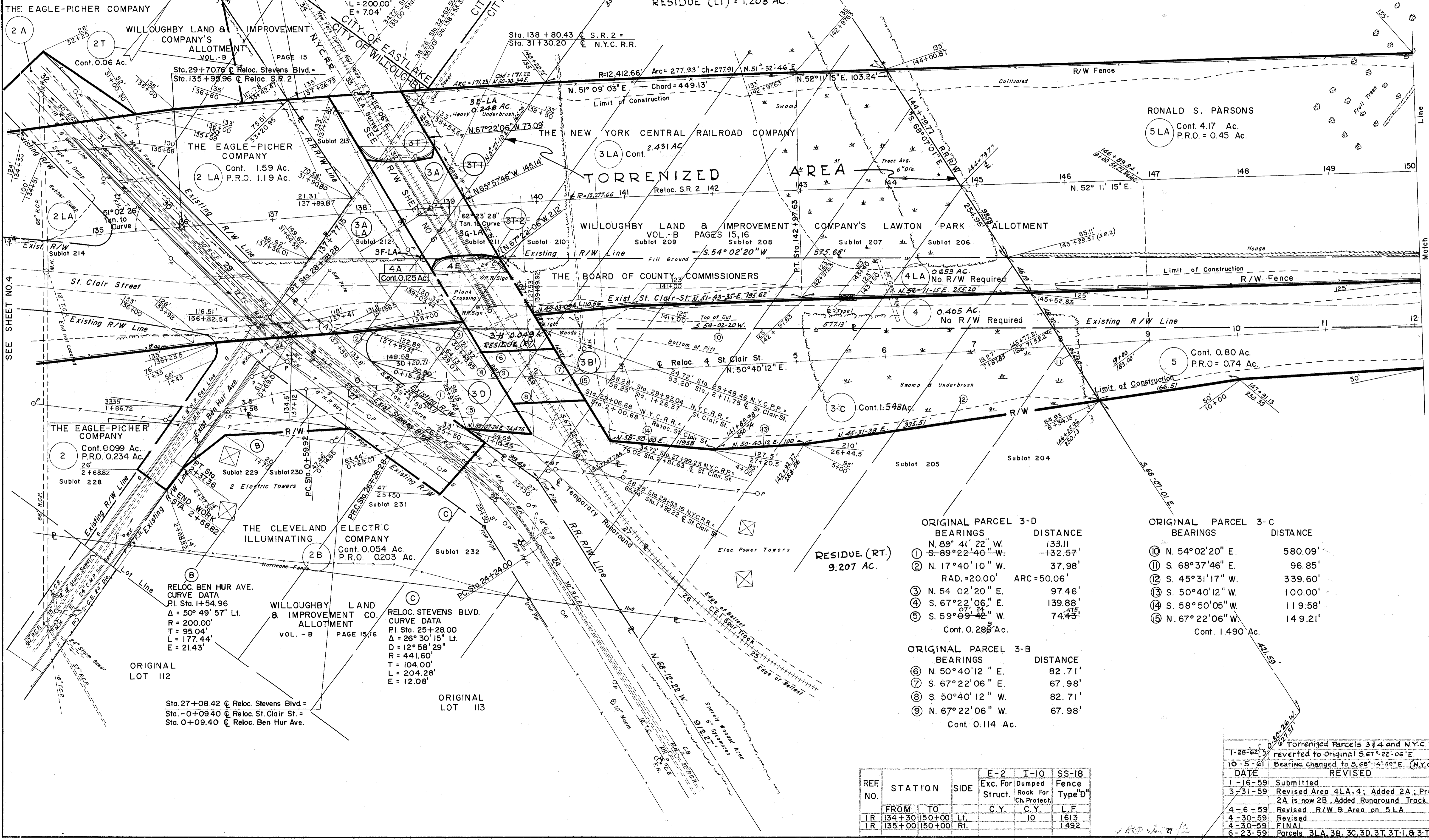


CURVE DATA
 P.I. Sta. 134+29.14
 $\Delta = 8^{\circ} 07' 10''$ Rt.
 $R = 12,277.66'$
 $D = 0^{\circ} 28' 00''$
 $T = 871.39'$
 $L = 1739.88'$
 $E = 30.83'$

Lake County
 City of Willoughby T-10-N
 City of Eastlake R-10-W

FED. RD. DIVISION	STATE	PROJECT	286
2	OHIO	F-U-329 (15)	

LAK-2-4.42
 R/W PLAN
 LIMITED ACCESS



RESIDUE (RT.)
 9.207 AC.

ORIGINAL PARCEL 3-D

BEARINGS	DISTANCE
① N. 89° 41' 22" W.	133.11
② S. 89° 22' 40" W.	132.57
③ N. 17° 40' 10" W.	37.98'
RAD. = 20.00' ARC = 50.06'	
④ N. 54° 02' 20" E.	97.46'
⑤ S. 67° 22' 06" E.	139.88'
⑥ S. 59° 09' 42" W.	74.43'
Cont. 0.288 Ac.	

ORIGINAL PARCEL 3-C

BEARINGS	DISTANCE
⑩ N. 54° 02' 20" E.	580.09'
⑪ S. 68° 37' 46" E.	96.85'
⑫ S. 45° 31' 17" W.	339.60'
⑬ S. 50° 40' 12" W.	100.00'
⑭ S. 58° 50' 05" W.	119.58'
⑮ N. 67° 22' 06" W.	149.21'
Cont. 1.490 Ac.	

ORIGINAL PARCEL 3-B

BEARINGS	DISTANCE
⑥ N. 50° 40' 12" E.	82.71'
⑦ S. 67° 22' 06" E.	67.98'
⑧ S. 50° 40' 12" W.	82.71'
⑨ N. 67° 22' 06" W.	67.98'
Cont. 0.114 Ac.	

RELOC. BEN HUR AVE.
 CURVE DATA
 P.I. Sta. 1+54.96
 $\Delta = 50^{\circ} 49' 57''$ Lt.
 $R = 200.00'$
 $T = 95.04'$
 $L = 177.44'$
 $E = 21.43'$

RELOC. STEVENS BLVD.
 CURVE DATA
 P.I. Sta. 25+28.00
 $\Delta = 26^{\circ} 30' 15''$ Lt.
 $R = 12^{\circ} 58' 29''$
 $T = 104.00'$
 $L = 204.28'$
 $E = 12.08'$

Sta. 27+08.42 @ Reloc. Stevens Blvd. =
 Sta. -0+09.40 @ Reloc. St. Clair St. =
 Sta. 0+09.40 @ Reloc. Ben Hur Ave.

REF. NO.	STATION	SIDE	Exc. For		I-10		SS-18	
			Struct.	Dumped	Rock For	Fence	Type "D"	
FROM	TO		C.Y.	C.Y.	L.F.	L.F.		
IR	134+30	150+00	Li.		10	1613		
IR	135+00	150+00	Rt.			1492		

DATE	REVISION
1-25-62	Torrenized Parcels 3 & 4 and N.Y.C. R.R. & Bearing reverted to Original S. 67° 22' 06" E.
10-5-61	Bearing changed to S. 68° 14' 59" E. (N.Y.C. R.R.)
1-16-59	Submitted
3-31-59	Revised Area 4LA, 4; Added 2A; Previously shown 2A is now 2B; Added Runaround Track. (5LA to be rev.)
4-6-59	Revised R/W & Area on 5LA
4-30-59	Revised
4-30-59	FINAL
6-23-59	Parcels 3LA, 3B, 3C, 3D, 3T, 3T-1, & 3T-2 Added

S.R. 2 STA. 134+00 TO STA. 150+00 R/W PLAN STEVENS BLVD. STA. 25+50 TO STA. 32+25