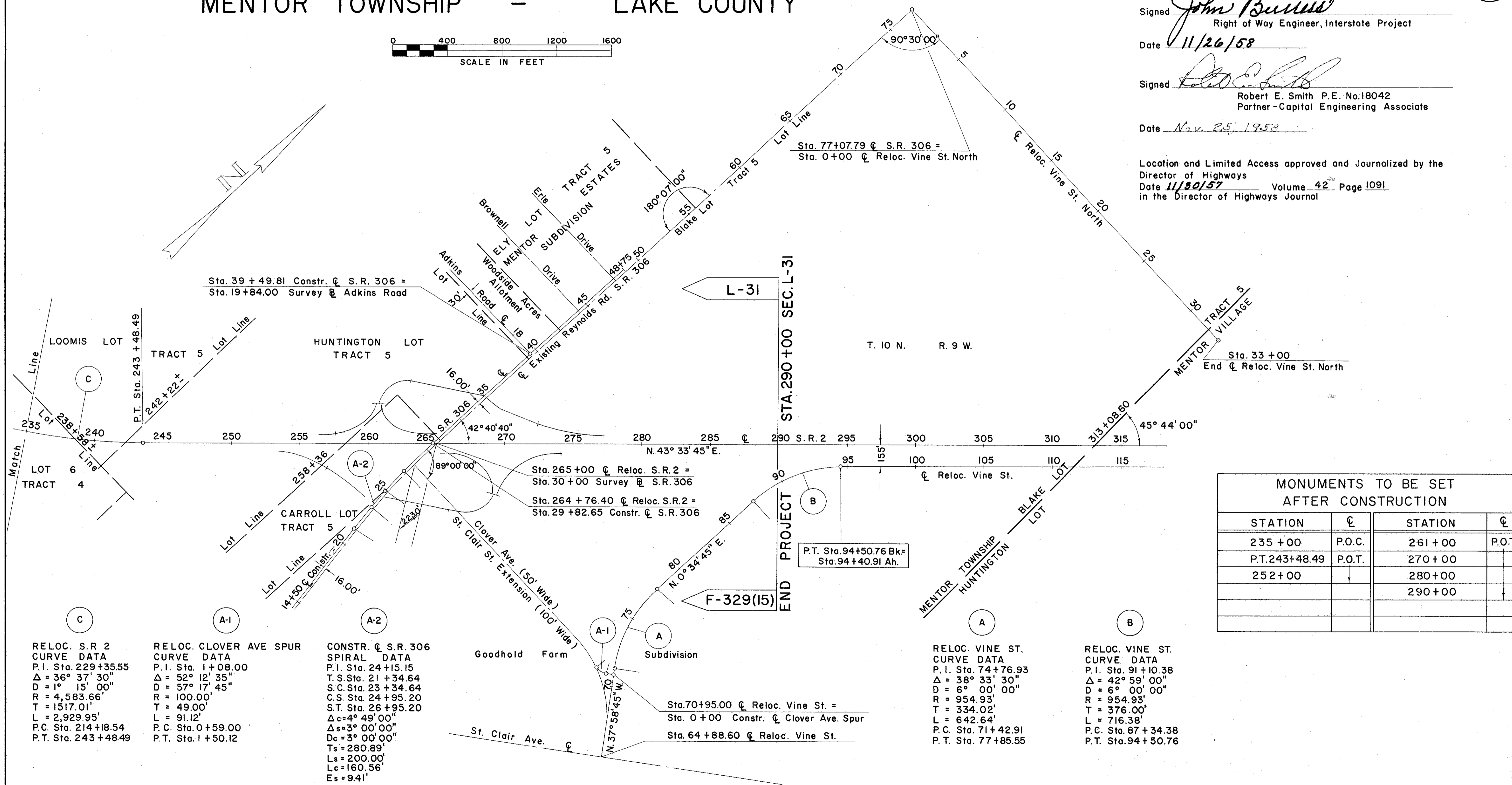
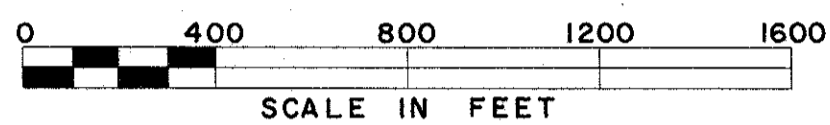


LOCATION PLAN

LAK - 2 - 4.42

CITY OF EASTLAKE - CITY OF WILLOUGHBY MENTOR TOWNSHIP - LAKE COUNTY



282
297

2
18

Signed John B. Smith
 Right of Way Engineer, Interstate Project
 Date 11/26/58

Signed Robert E. Smith
 Robert E. Smith P.E. No. 18042
 Partner - Capital Engineering Associate
 Date Nov. 25, 1958

Location and Limited Access approved and Journalized by the
 Director of Highways
 Date 11/30/57 Volume 42 Page 1091
 in the Director of Highways Journal

| MONUMENTS TO BE SET AFTER CONSTRUCTION | | | |
|---|--------|---------|--------|
| STATION | ℄ | STATION | ℄ |
| 235+00 | P.O.C. | 261+00 | P.O.T. |
| P.T. 243+48.49 | P.O.T. | 270+00 | |
| 252+00 | | 280+00 | |
| | | 290+00 | |

C
 RELOC. S.R. 2
 CURVE DATA
 P.I. Sta. 229+35.55
 $\Delta = 36^\circ 37' 30''$
 $D = 1^\circ 15' 00''$
 $R = 4,583.66'$
 $T = 1517.01'$
 $L = 2,929.95'$
 P.C. Sta. 214+18.54
 P.T. Sta. 243+48.49

A-1
 RELOC. CLOVER AVE SPUR
 CURVE DATA
 P.I. Sta. 1+08.00
 $\Delta = 52^\circ 12' 35''$
 $D = 57^\circ 17' 45''$
 $R = 100.00'$
 $T = 49.00'$
 $L = 91.12'$
 P.C. Sta. 0+59.00
 P.T. Sta. 1+50.12

A-2
 CONSTR. S.R. 306
 SPIRAL DATA
 P.I. Sta. 24+15.15
 T.S. Sta. 21+34.64
 S.C. Sta. 23+34.64
 C.S. Sta. 24+95.20
 S.T. Sta. 26+95.20
 $\Delta_s = 4^\circ 49' 00''$
 $\Delta_s = 3^\circ 00' 00''$
 $D_s = 3^\circ 00' 00''$
 $T_s = 280.89'$
 $L_s = 200.00'$
 $L_c = 160.56'$
 $E_s = 9.41'$

A
 RELOC. VINE ST.
 CURVE DATA
 P.I. Sta. 74+76.93
 $\Delta = 38^\circ 33' 30''$
 $D = 6^\circ 00' 00''$
 $R = 954.93'$
 $T = 334.02'$
 $L = 642.64'$
 P.C. Sta. 71+42.91
 P.T. Sta. 77+85.55

B
 RELOC. VINE ST.
 CURVE DATA
 P.I. Sta. 91+10.38
 $\Delta = 42^\circ 59' 00''$
 $D = 6^\circ 00' 00''$
 $R = 954.93'$
 $T = 376.00'$
 $L = 716.38'$
 P.C. Sta. 87+34.38
 P.T. Sta. 94+50.76