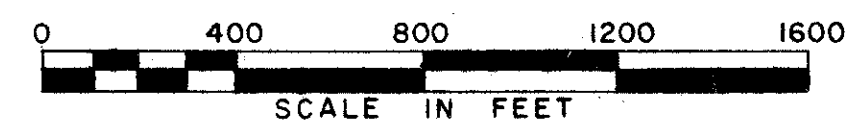
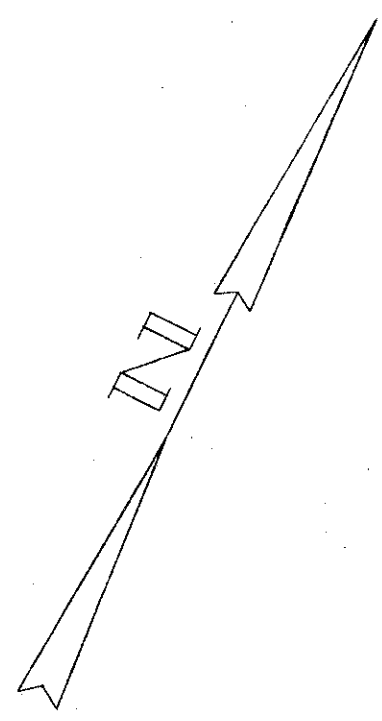


LOCATION PLAN

LAK-2-442

CITY OF EASTLAKE - CITY OF WILLOUGHBY MENTOR TOWNSHIP - LAKE COUNTY



Received _____ Time _____
 Recorded _____
 Plat Book M Page 75
 Signed _____ Recorded Lake County, Ohio
 Fee _____ Paid _____

281
297

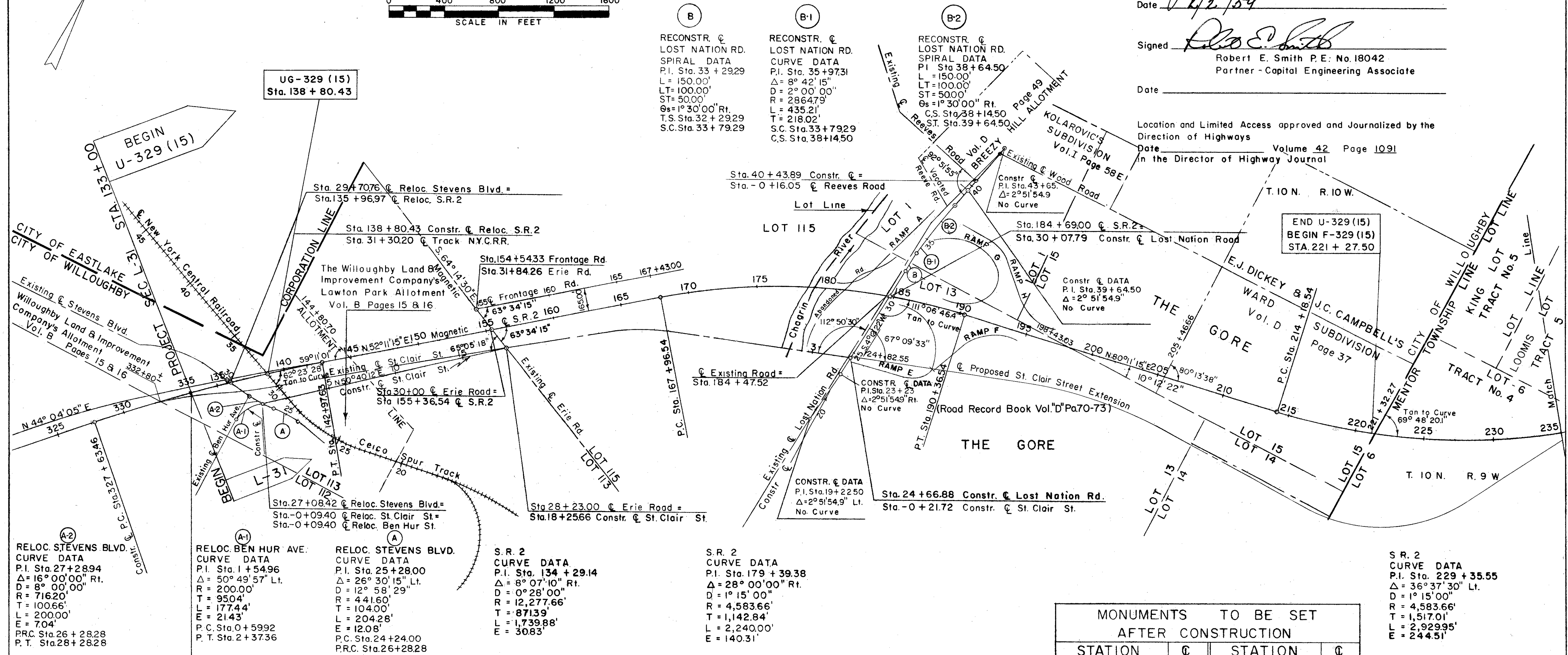
1
18

Signed John Russell
 Right of Way Engineer, Interstate Project

Date 2/2/59

Signed Robert E. Smith
 Robert E. Smith P.E. No. 18042
 Partner - Capital Engineering Associate

Location and Limited Access approved and Journalized by the
 Direction of Highways
 Date _____ Volume 42 Page 1091
 in the Director of Highway Journal



(B)
 RECONSTR. &
 LOST NATION RD.
 SPIRAL DATA
 P.I. Sta. 33+29.29
 L = 150.00'
 LT = 100.00'
 ST = 50.00'
 $\theta_s = 1^\circ 30' 00''$ Rt.
 T.S. Sta. 32+29.29
 S.C. Sta. 33+79.29

(B-1)
 RECONSTR. &
 LOST NATION RD.
 CURVE DATA
 P.I. Sta. 35+97.31
 $\Delta = 8^\circ 42' 15''$
 D = $2^\circ 00' 00''$
 R = 2864.79'
 L = 435.21'
 T = 218.02'
 S.C. Sta. 33+79.29
 C.S. Sta. 38+14.50

(B-2)
 RECONSTR. &
 LOST NATION RD.
 SPIRAL DATA
 P.I. Sta. 38+64.50
 L = 150.00'
 LT = 100.00'
 ST = 50.00'
 $\theta_s = 1^\circ 30' 00''$ Rt.
 C.S. Sta. 38+14.50
 S.T. Sta. 39+64.50

(A-2)
 RELOC. STEVENS BLVD.
 CURVE DATA
 P.I. Sta. 27+28.94
 $\Delta = 16^\circ 00' 00''$ Rt.
 D = $8^\circ 00' 00''$
 R = 716.20'
 T = 100.66'
 L = 200.00'
 E = 7.04'
 P.C. Sta. 26+28.28
 P.T. Sta. 28+28.28

(A-1)
 RELOC. BEN HUR AVE.
 CURVE DATA
 P.I. Sta. 1+54.96
 $\Delta = 50^\circ 49' 57''$ Lt.
 R = 200.00'
 L = 177.44'
 T = 21.43'
 P.C. Sta. 0+59.92
 P.T. Sta. 2+37.36

(A)
 RELOC. STEVENS BLVD.
 CURVE DATA
 P.I. Sta. 25+28.00
 $\Delta = 26^\circ 30' 15''$ Lt.
 D = $12^\circ 58' 29''$
 R = 441.60'
 L = 104.00'
 T = 204.28'
 E = 12.08'
 P.C. Sta. 24+24.00
 P.R.C. Sta. 26+28.28

S.R. 2
 CURVE DATA
 P.I. Sta. 134+29.14
 $\Delta = 8^\circ 07' 10''$ Rt.
 D = $0^\circ 28' 00''$
 R = 12,277.66'
 T = 871.39'
 L = 1,739.88'
 E = 30.83'

S.R. 2
 CURVE DATA
 P.I. Sta. 179+39.38
 $\Delta = 28^\circ 00' 00''$ Rt.
 D = $1^\circ 15' 00''$
 R = 4,583.66'
 T = 1,142.84'
 L = 2,240.00'
 E = 140.31'

S.R. 2
 CURVE DATA
 P.I. Sta. 229+35.55
 $\Delta = 36^\circ 37' 30''$ Lt.
 D = $1^\circ 15' 00''$
 R = 4,583.66'
 T = 1,517.01'
 L = 2,929.95'
 E = 244.51'

EQUATION
 O.D.H. Sect. CUY-2 2957 LAK-2-00 Sta. 335+05.71 Bk =
 Capital Engineer Sect. LAK-2-442 Sta. 133+00.00 Ah =

CENTER LINE REFERENCE MONUMENTS

Tan. to $\frac{1}{2}$ Curve	Tan. to $\frac{1}{2}$ Curve	Tan. to $\frac{1}{2}$ Curve
Sta. 167+96.54 P.C.	Sta. 175+96.54	Sta. 183+96.54

MONUMENTS TO BE SET
AFTER CONSTRUCTION

STATION	☉	STATION	☉
133+00	P.O.C.	183+96.54	Offset
142+97.63	P.T.	190+36.54	P.O.T.
151+00	P.O.T.	198+25	
159+00	↑	206+25	
167+96.54	P.C. Offset	214+18.54	P.C.
175+96.54	Offset	224+00	P.O.C.