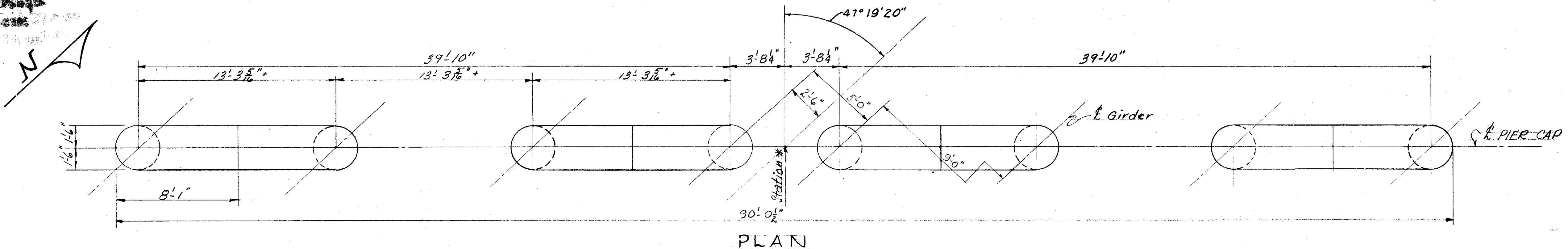
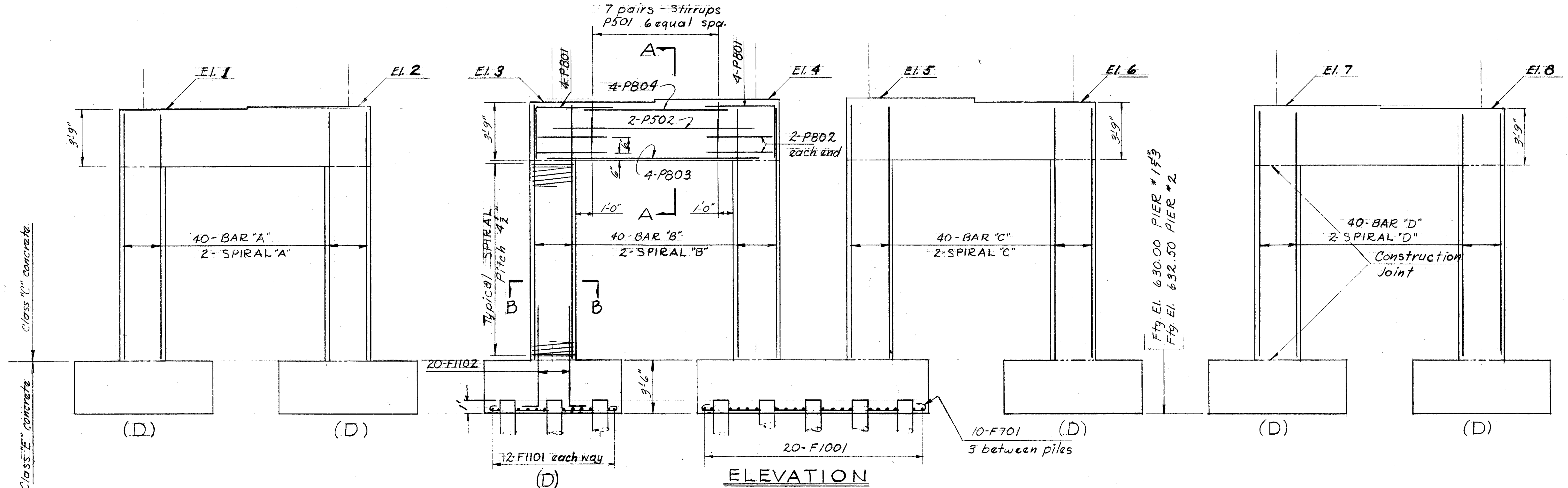


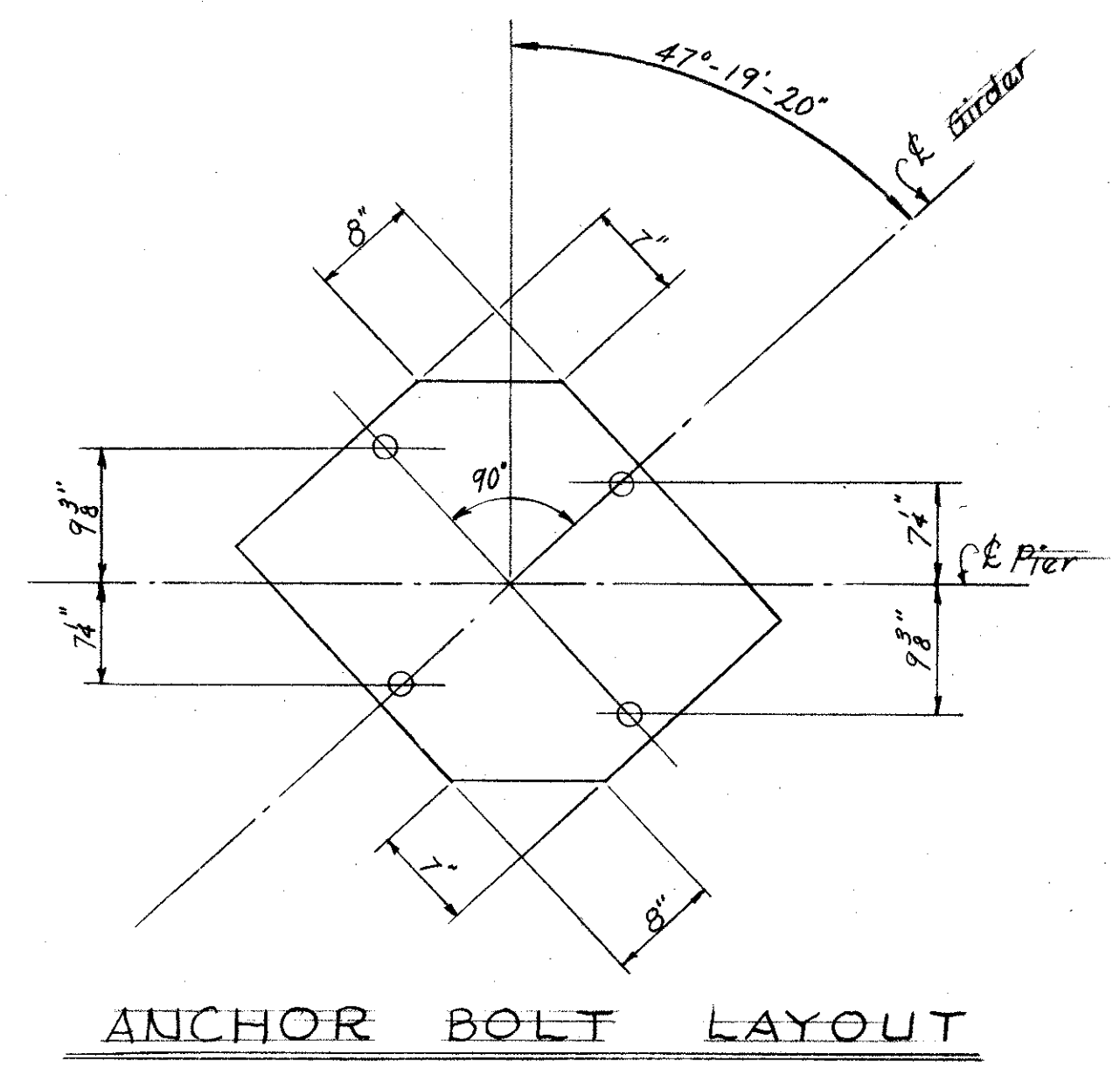
LAKE COUNTY
SEC. LAK-2-4.42



PLAN

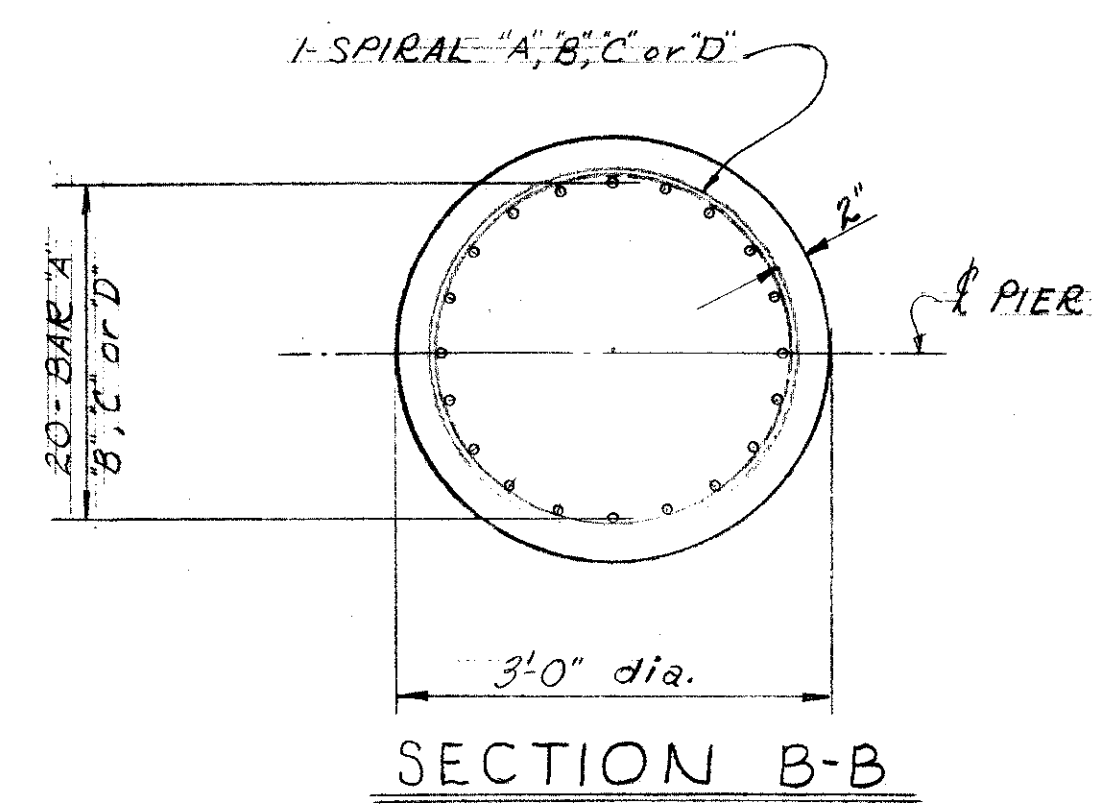


ELEVATION

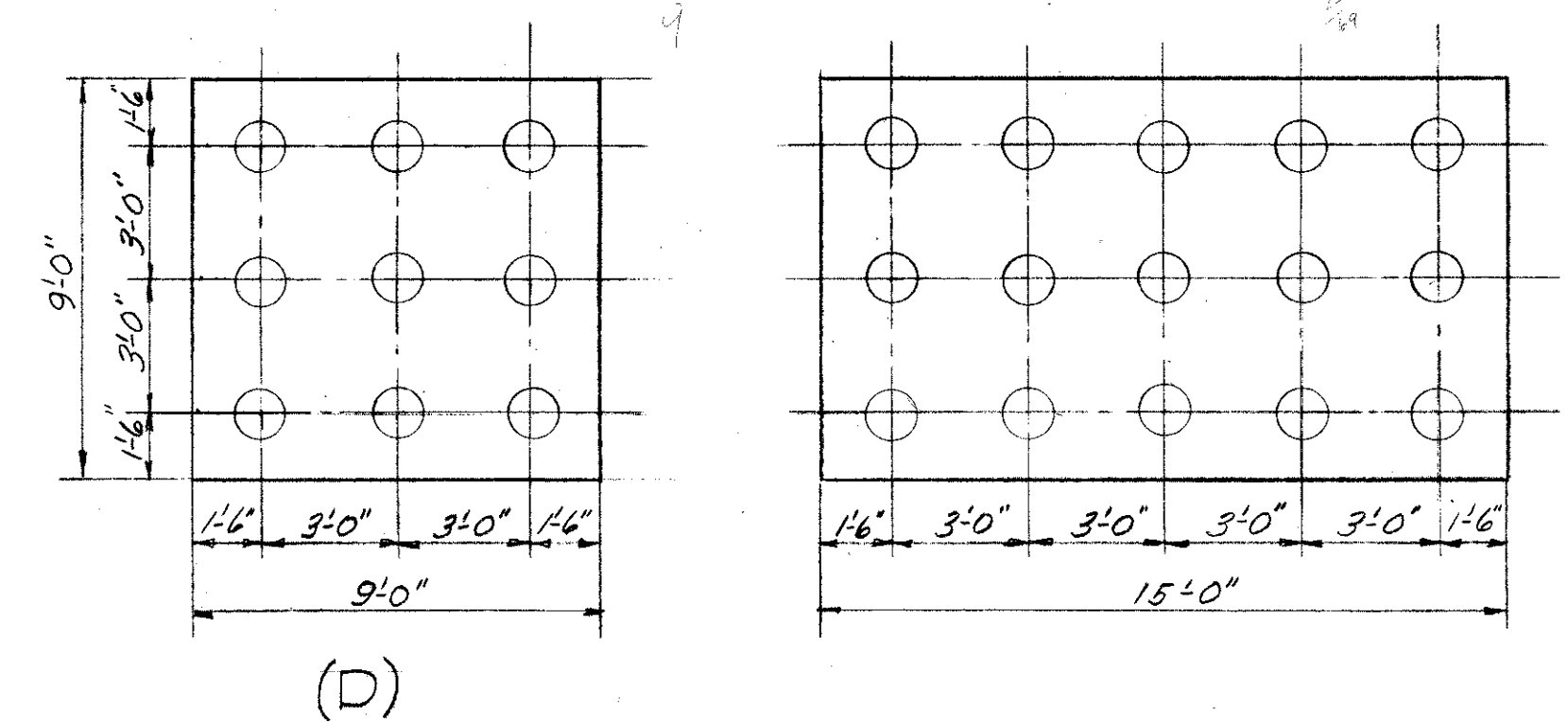


ANCHOR BOLT LAYOUT

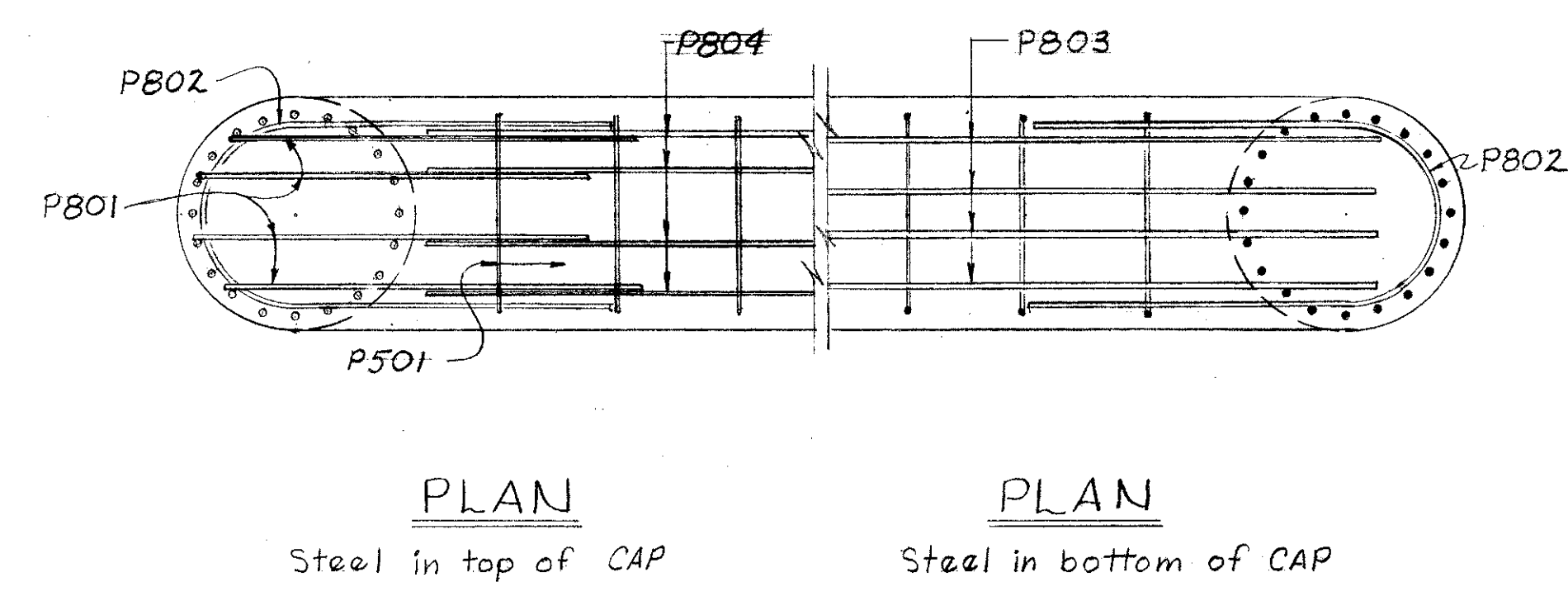
NOTES:
 REINFORCING STEEL shall have 3" of cover in the bottom of the footing and 2" elsewhere.
 Special care shall be taken in placing the reinforcing steel in the cap on PIER #2 so it does not interfere with the drilling of anchor bolt holes.
 All piles 12" Cast-in-Place reinforced concrete; design load 40 ton/pile.
 All pier caps, columns and footings are identical except as otherwise shown.



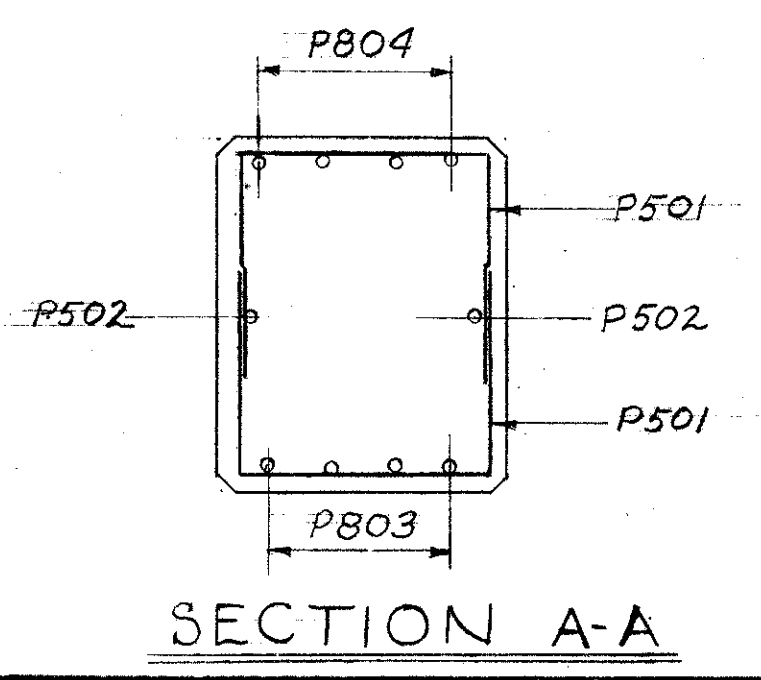
SECTION B-B



PIER FOOTING PLAN



PLAN
Steel in top of CAP
PLAN
Steel in bottom of CAP



SECTION A-A

LOCATION	STATION*	EL.1	EL.2	EL.3	EL.4	EL.5	EL.6	EL.7	EL.8	BAR 'A'	BAR 'B'	BAR 'C'	BAR 'D'	SPIRAL 'A'	SPIRAL 'B'	SPIRAL 'C'	SPIRAL 'D'
PIER # 1	28+62.40	651.35	651.60	651.85	652.09	652.14	652.08	652.02	651.95	P904	P905	P903	P903	SP404	SP405	SP403	SP403
PIER # 2	29+82.65	652.01	652.17	652.32	652.47	652.47	652.32	652.16	652.00	P901	P902	P902	P901	SP401	SP402	SP402	SP401
PIER # 3	31+02.90	651.91	651.98	652.04	652.09	652.04	651.79	651.54	651.29	P903	P903	P905	P904	SP403	SP403	SP405	SP404

PREPARED BY
CAPITOL ENGINEERING ASSOCIATES, DILLSBURG, PA. FOR

STATE OF OHIO
DEPARTMENT OF HIGHWAYS
DIVISION OF DESIGN AND CONSTRUCTION
BUREAU OF BRIDGES

PIERS
BRIDGE NO. LAK-2-0695
RELOC. S.R. 2 UNDER S.R. 306
LAKE COUNTY
STA. 264 + 76.40

DESIGNED	DRT	DRAWN	DRT	TRACED		CHECKED		REVISED DATE		REVISED	
----------	-----	-------	-----	--------	--	---------	--	--------------	--	---------	--