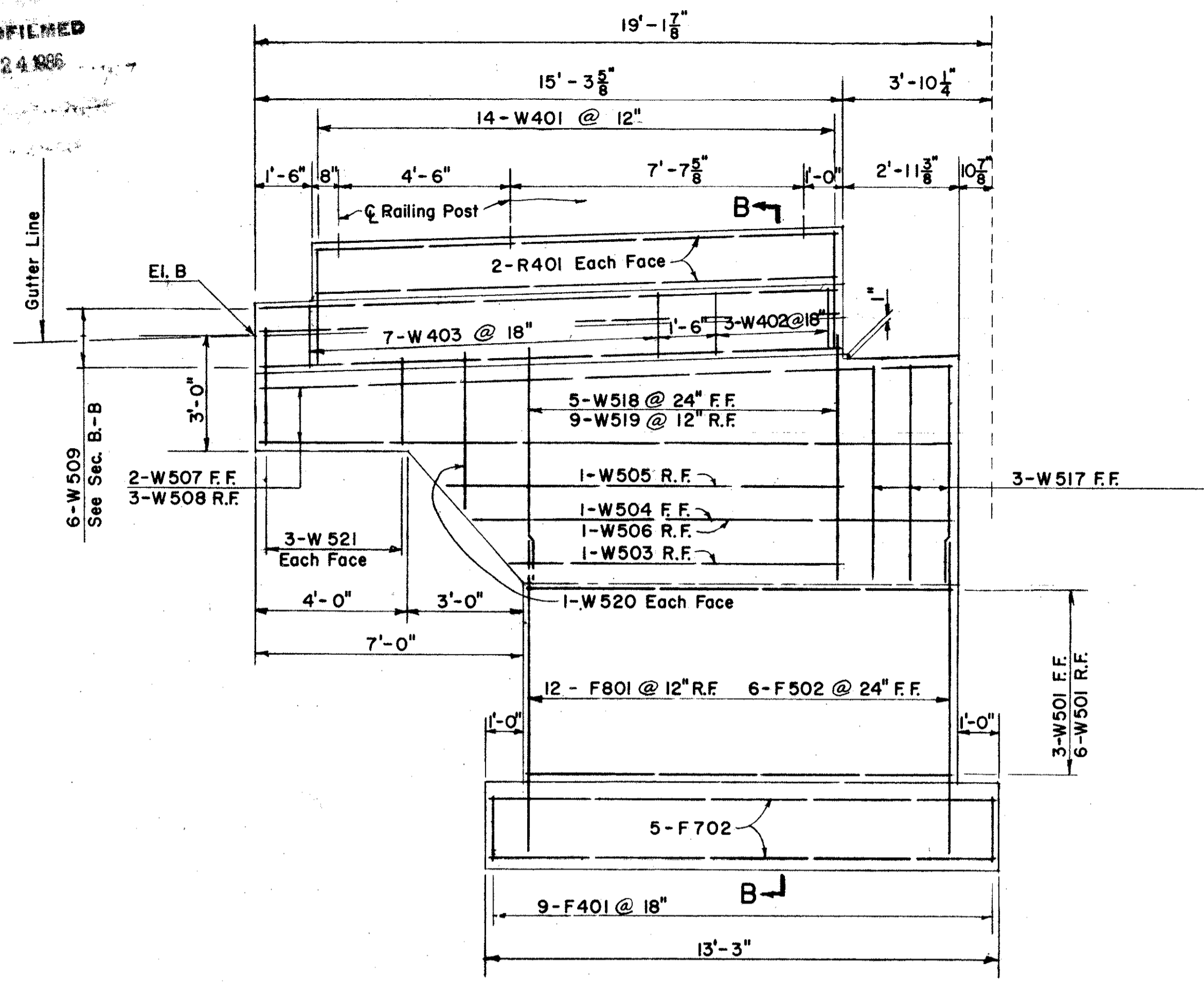


MICROFILMED
SEP 24 1986

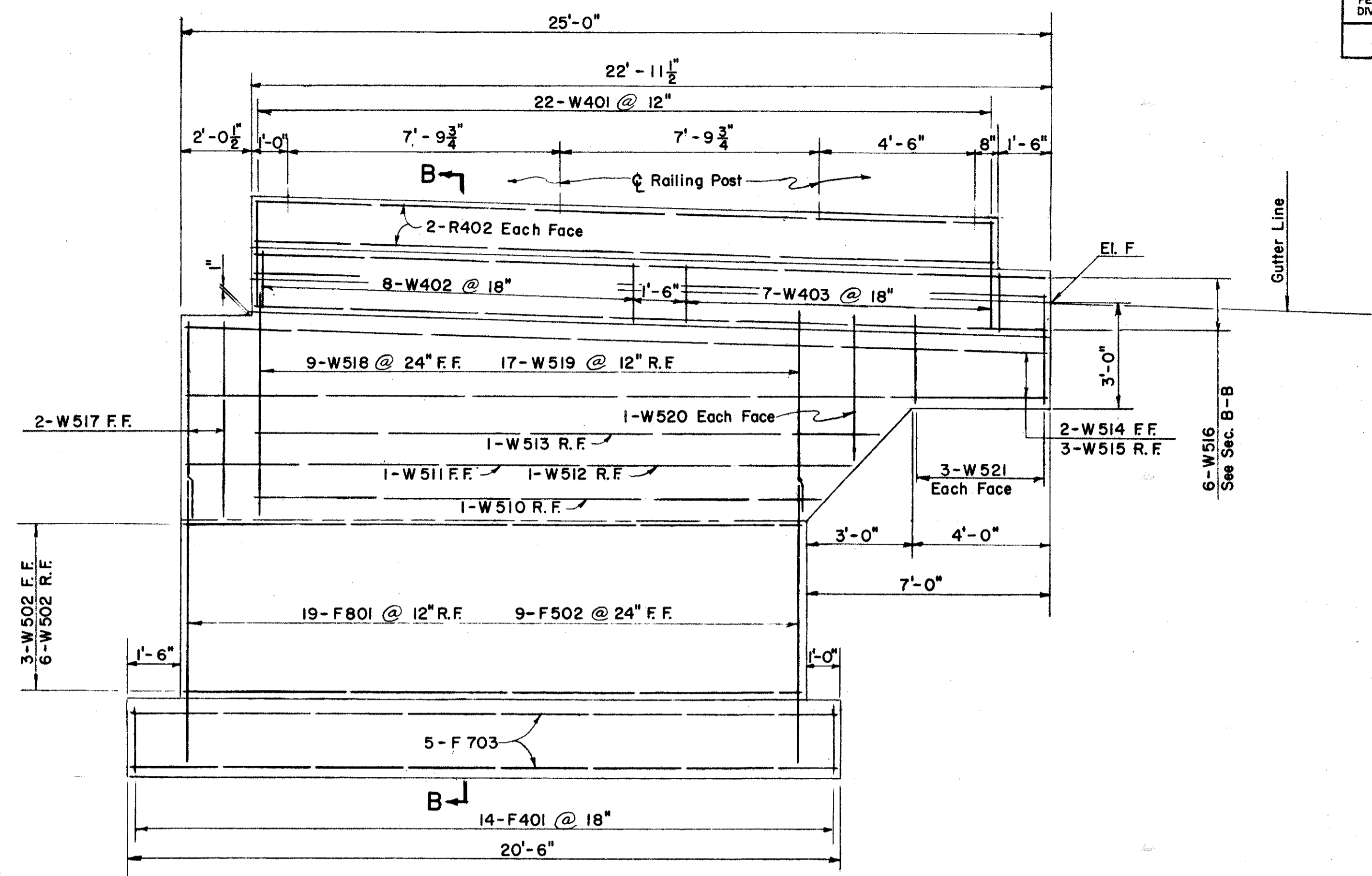
FED. RD. DIVISION	STATE	PROJECT	
2	OHIO	F-U-329 (15)	

276
297

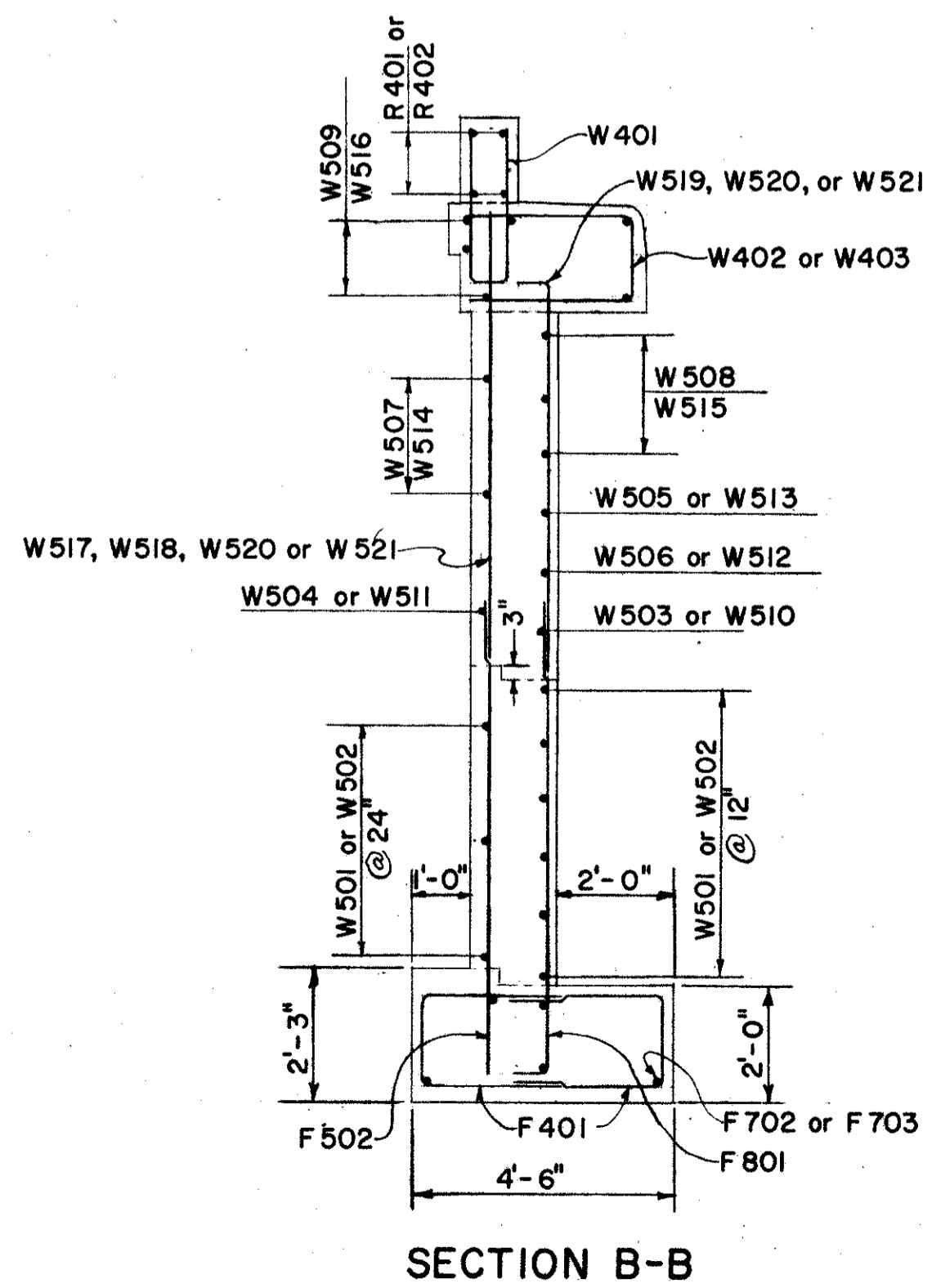
LAKE COUNTY
SEC. LAK-2-4.42



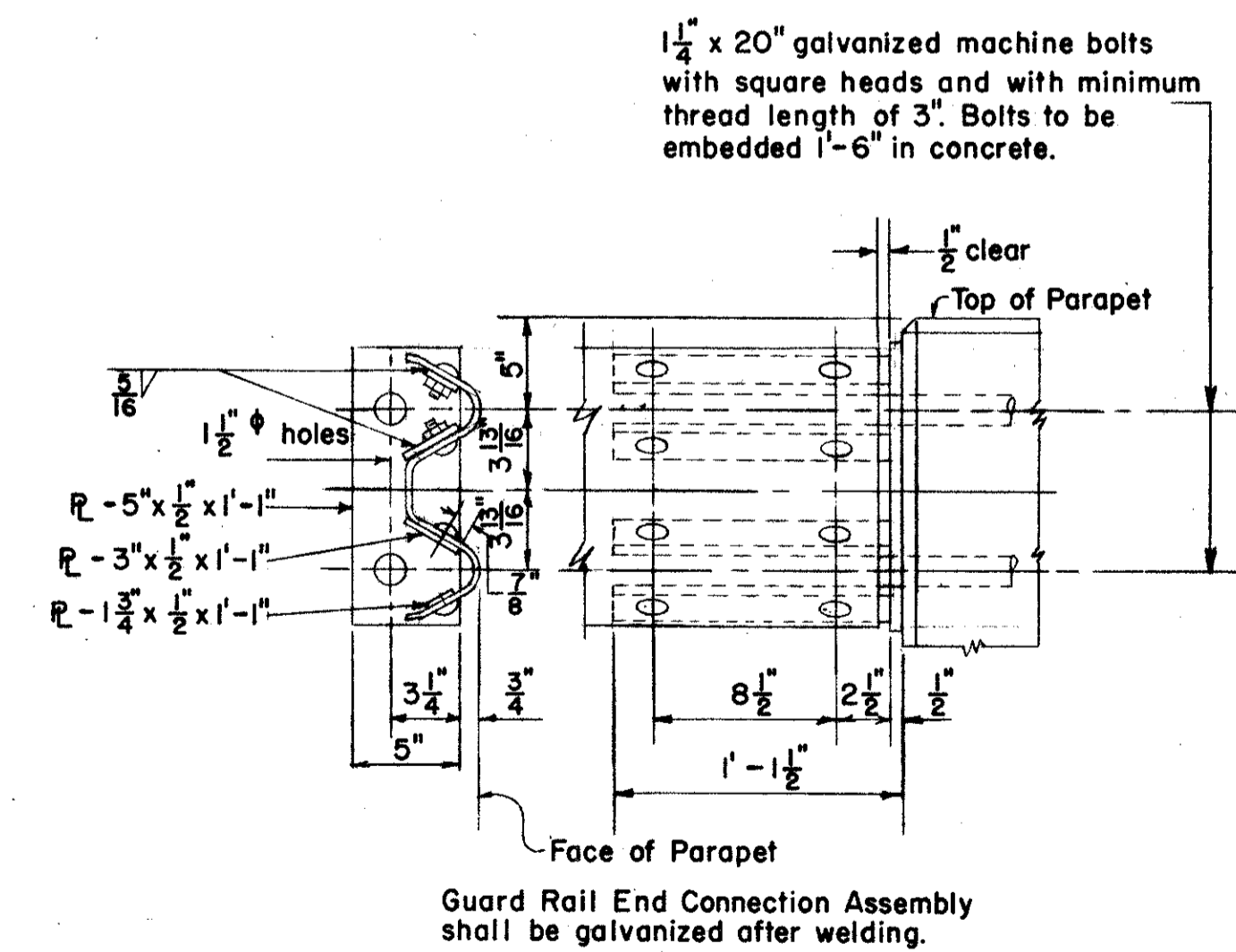
WING A



WING B

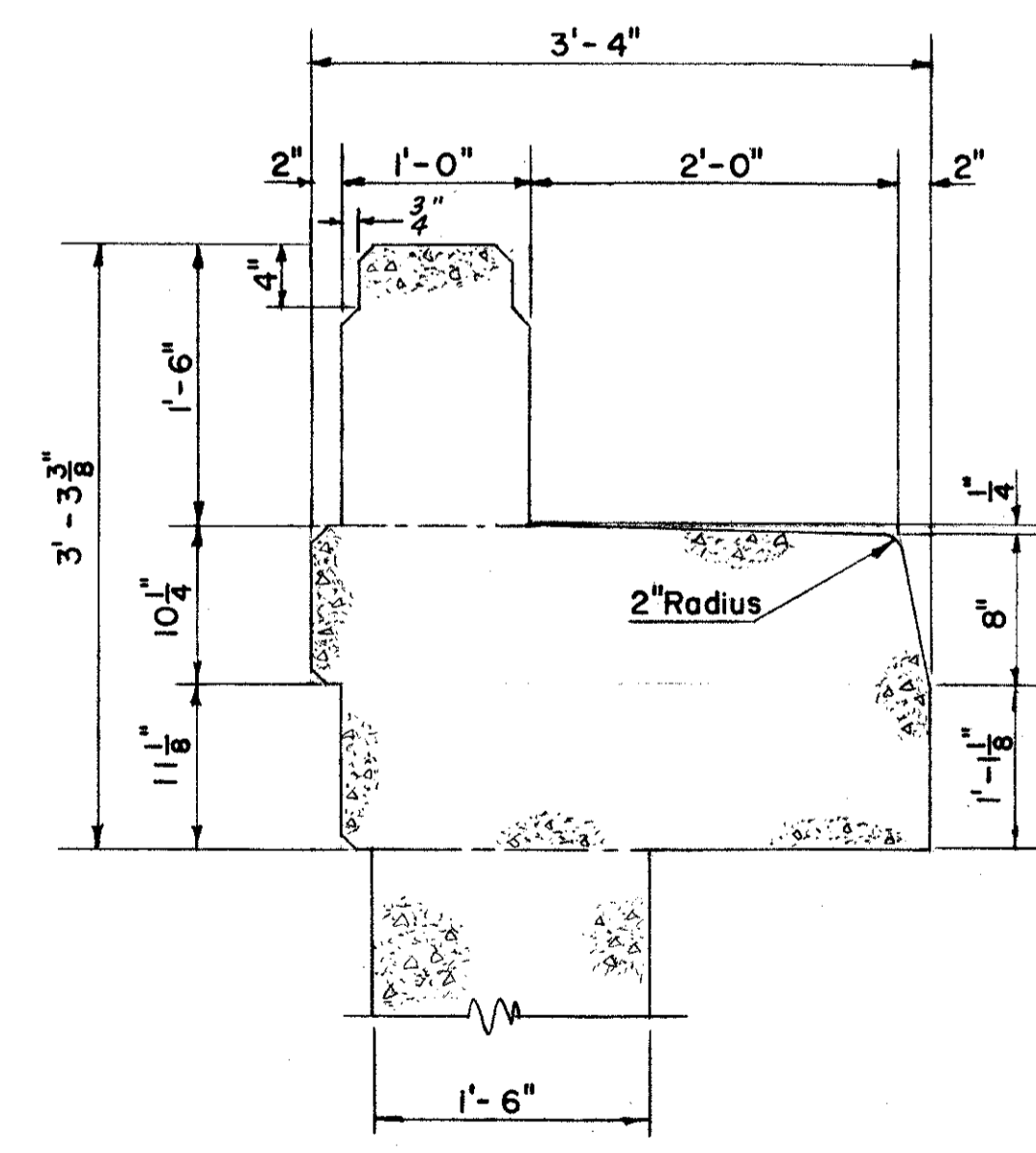


SECTION B-B



GUARD RAIL DETAIL

Include with Item 5-14 for payment.



TYPICAL CURB & PARAPET DETAIL

NOTES:
R.F. denotes Rear Face
F.F. denotes Front Face
All reinforcing steel shall have 3" of cover in the bottom of the footing and 2" elsewhere.

PREPARED BY CAPITOL ENGINEERING ASSOCIATES, DILLSBURG, PA. FOR					
STATE OF OHIO DEPARTMENT OF HIGHWAYS DIVISION OF DESIGN AND CONSTRUCTION BUREAU OF BRIDGES					
ABUTMENT DETAILS BRIDGE NO. LAK-2-0695 S.R. 2 UNDER S.R. 306 LAKE COUNTY STA. 264 + 76.40					
DESIGNED DRT	DRAWN	TRACED	CHECKED	REVISED DATE	REVISED