

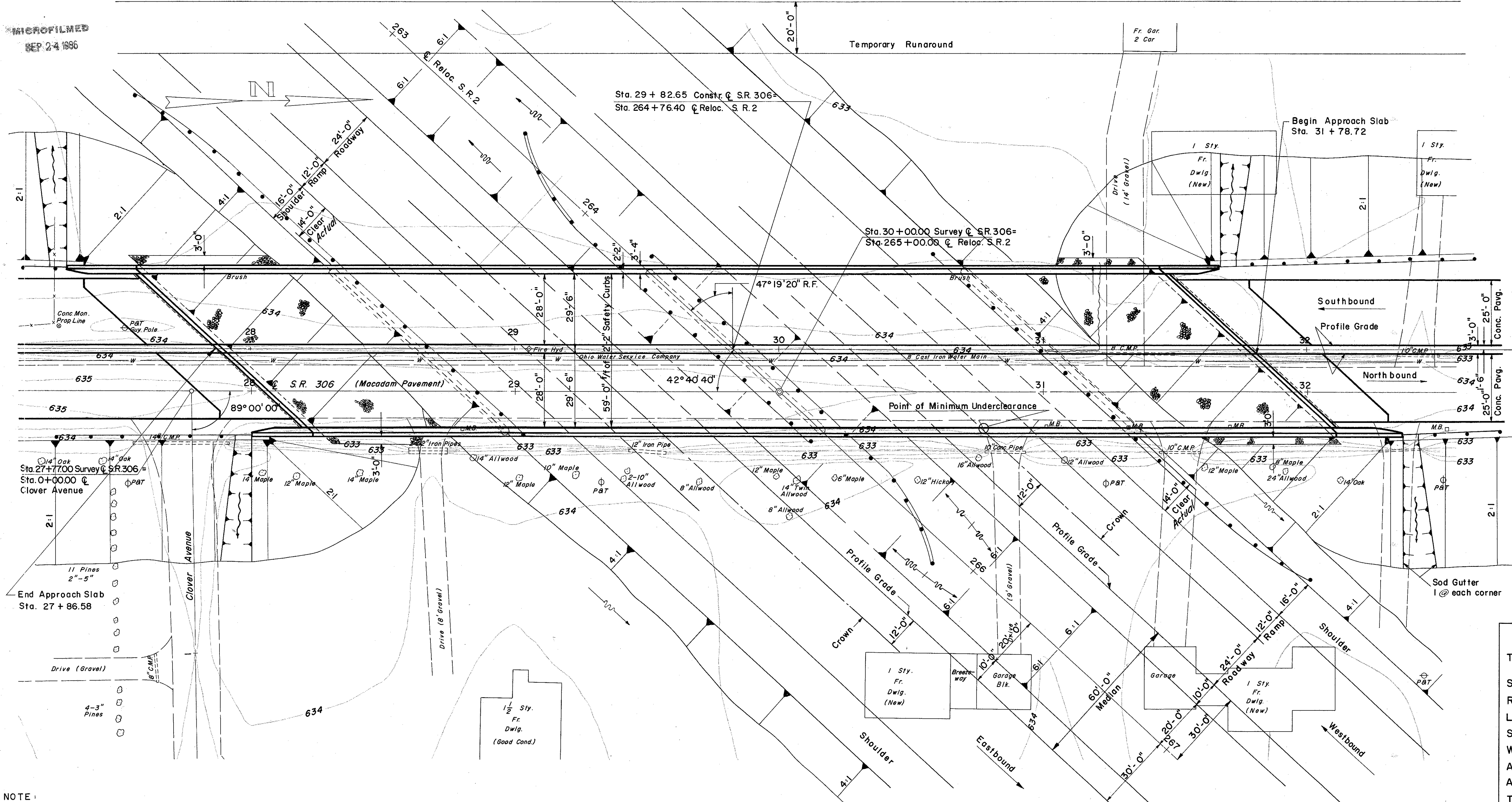
MICROFILMED
SEP 24 1986

FED. RD. DIVISION	STATE	PROJECT	
2	OHIO	F-U-329 (15)	

273
297

LAKE COUNTY
SEC. LAK-2-4.42

B.M. # 19 Lag Bolt in root 16" Maple
193' Lt. Sta. 267 + 55.00
El. 633.304

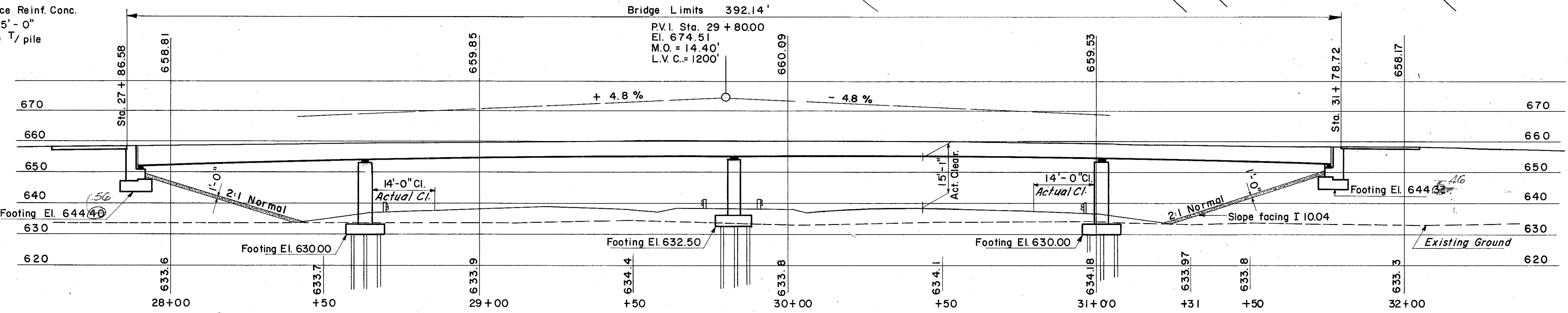


FOUNDATIONS SOUNDINGS: Foundation design and foundation quantities are based on a study of borings and Soil Samplings made at the site. This sounding information may be inspected in the Bureau of Bridges Office and in the Division Office, but the State does not guarantee the accuracy thereof.

PROPOSED STRUCTURE
 TYPE: 4 Span Continuous Plate Girder with reinforced concrete deck and substructure.
 SPANS: 72'-6", 120'-3", 120'-3", 72'-6"
 ROADWAY: 59'-0" 1/2 of 2'-2" Safety Curbs
 LOAD FREQUENCY: C.F 2000
 SKEW: 47° 19' 20" R.F.
 WEARING SURFACE: 1" Monolithic conc.
 APPROACH SLABS: 25'-0" Long (AS-1-54)
 ALIGNMENT: Tangent
 TRAFFIC: 5220 - 1957

NOTE:
 All Piles cast-in-place Reinf. Conc.
 Est. Avg. pile length 25'-0"
 Max. Design Load 40 T/pile

Abutments: 3 T/sq. ft.
 The embankment shall be placed 30 days prior to excavation of the abutments.



PROFILE ALONG CONSTRUCTION C. S.R. 306

PREPARED BY
 CAPITOL ENGINEERING ASSOCIATES, DILLSBURG, PA.
 FOR
 STATE OF OHIO
 DEPARTMENT OF HIGHWAYS
 DIVISION OF DESIGN AND CONSTRUCTION
 BUREAU OF BRIDGES

SITE PLAN
 BRIDGE NO. LAK-2-0695
 RELOC. S.R.2 UNDER S.R. 306
 LAKE COUNTY
 STA. 264 + 76.40

DESIGNED	DRAWN	TRACED	CHECKED	REVISED DATE	REVISED
DET	DET				5-17-57

90.0 L-31