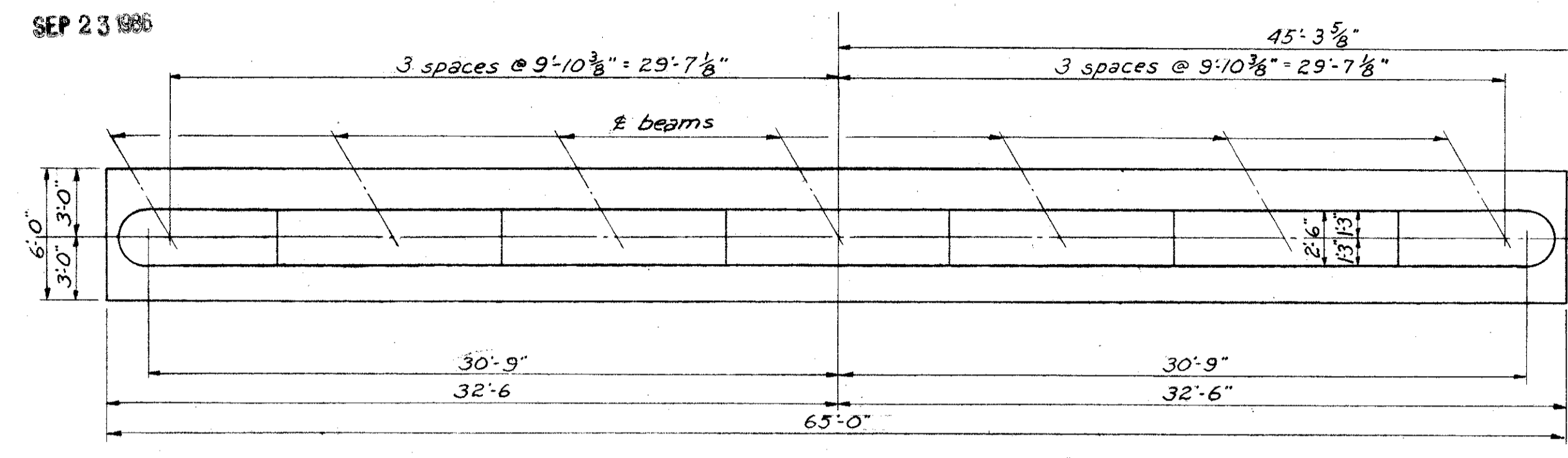


MICROFILMED
SEP 23 1986

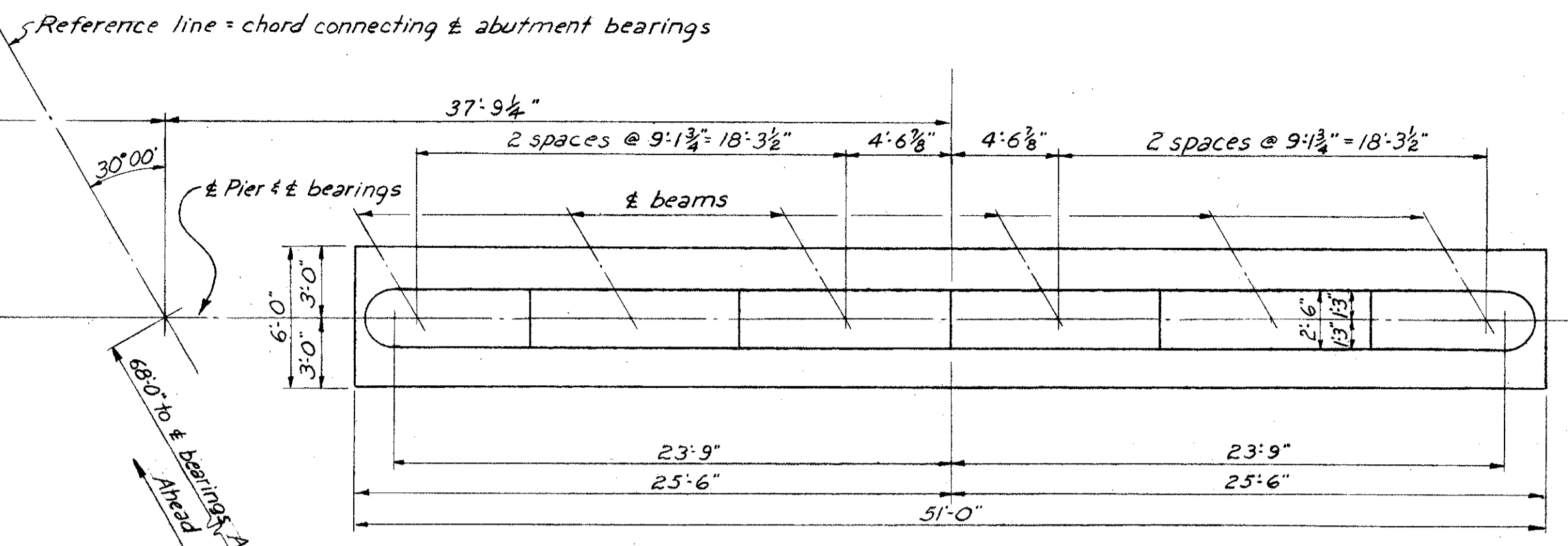
FED. RD. DIVISION	STATE	PROJECT	
2	OHIO	F-U-329 (15)	

263
297

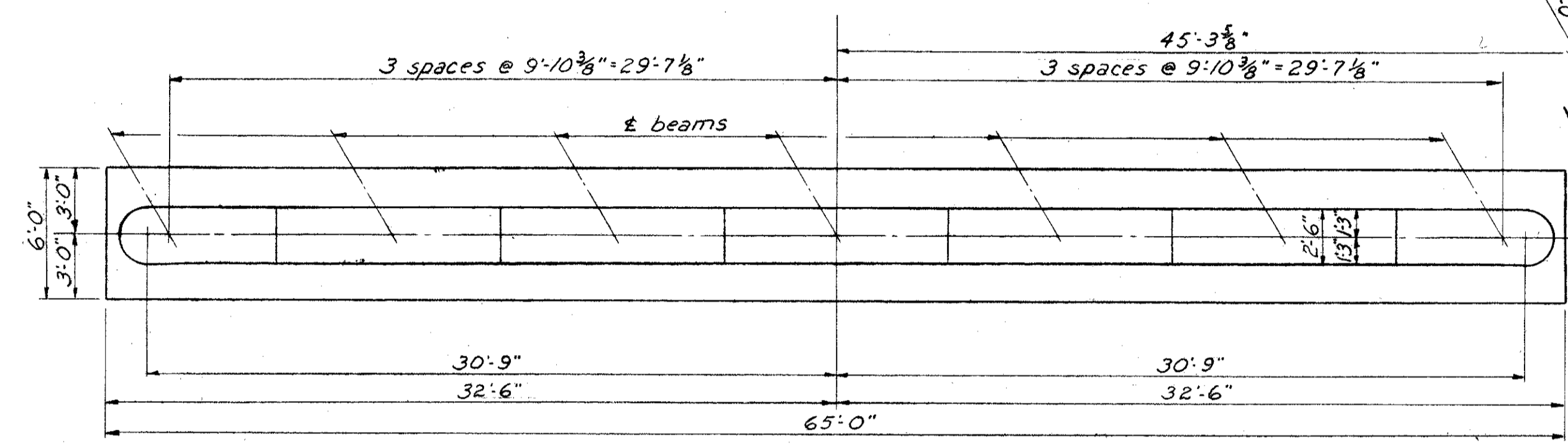
LAKE COUNTY
SEC. LAK-2-4.42



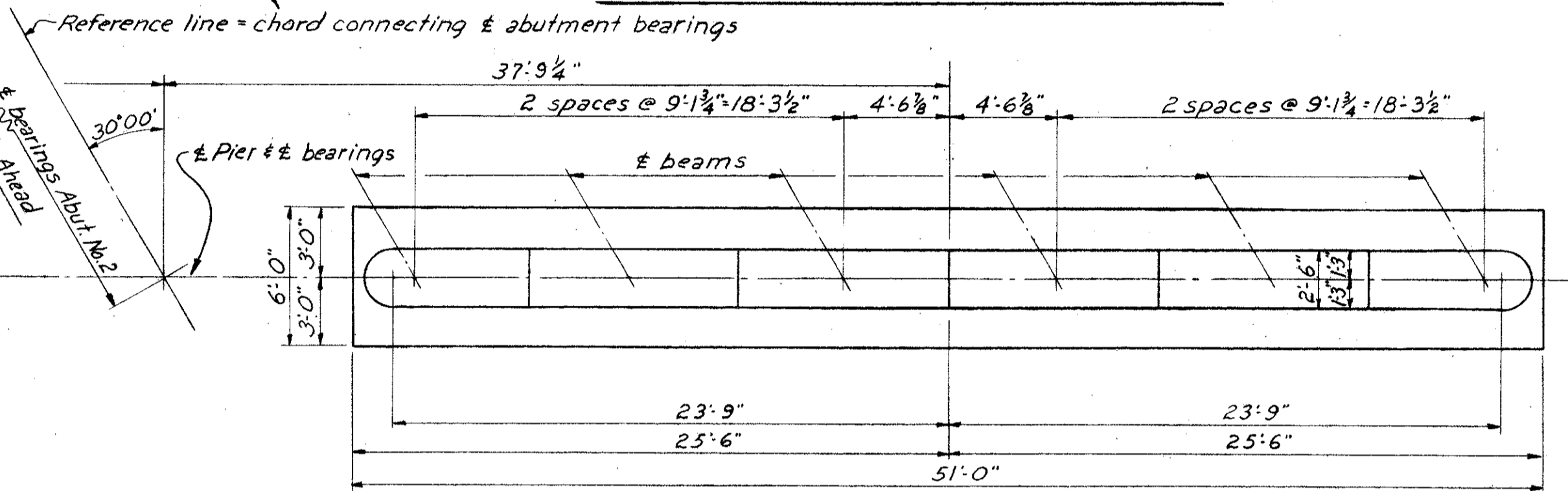
PLAN PIER NO.1 - NORTH BRIDGE



PLAN PIER NO.1 - SOUTH BRIDGE

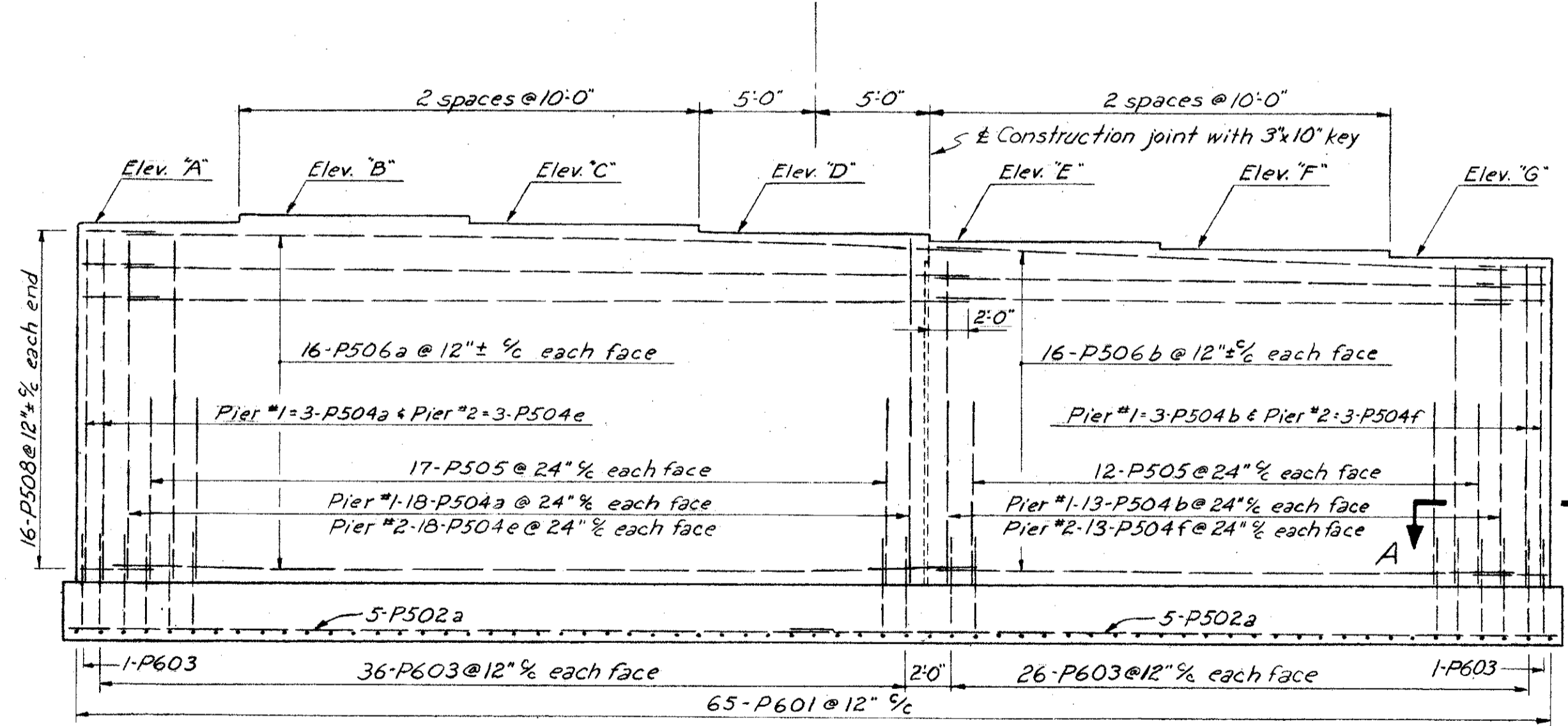
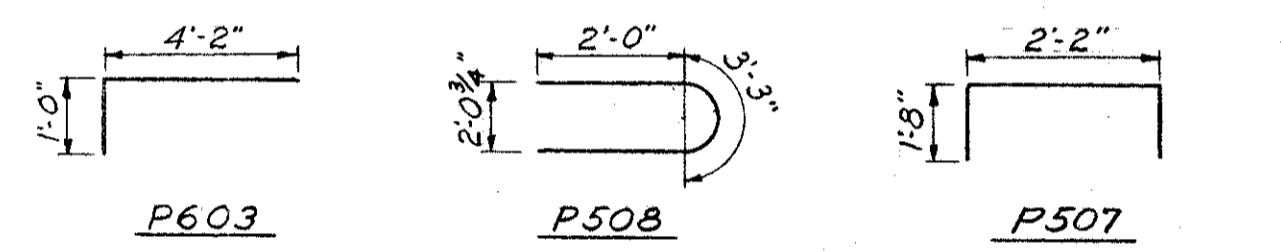


PLAN PIER NO.2 - NORTH BRIDGE

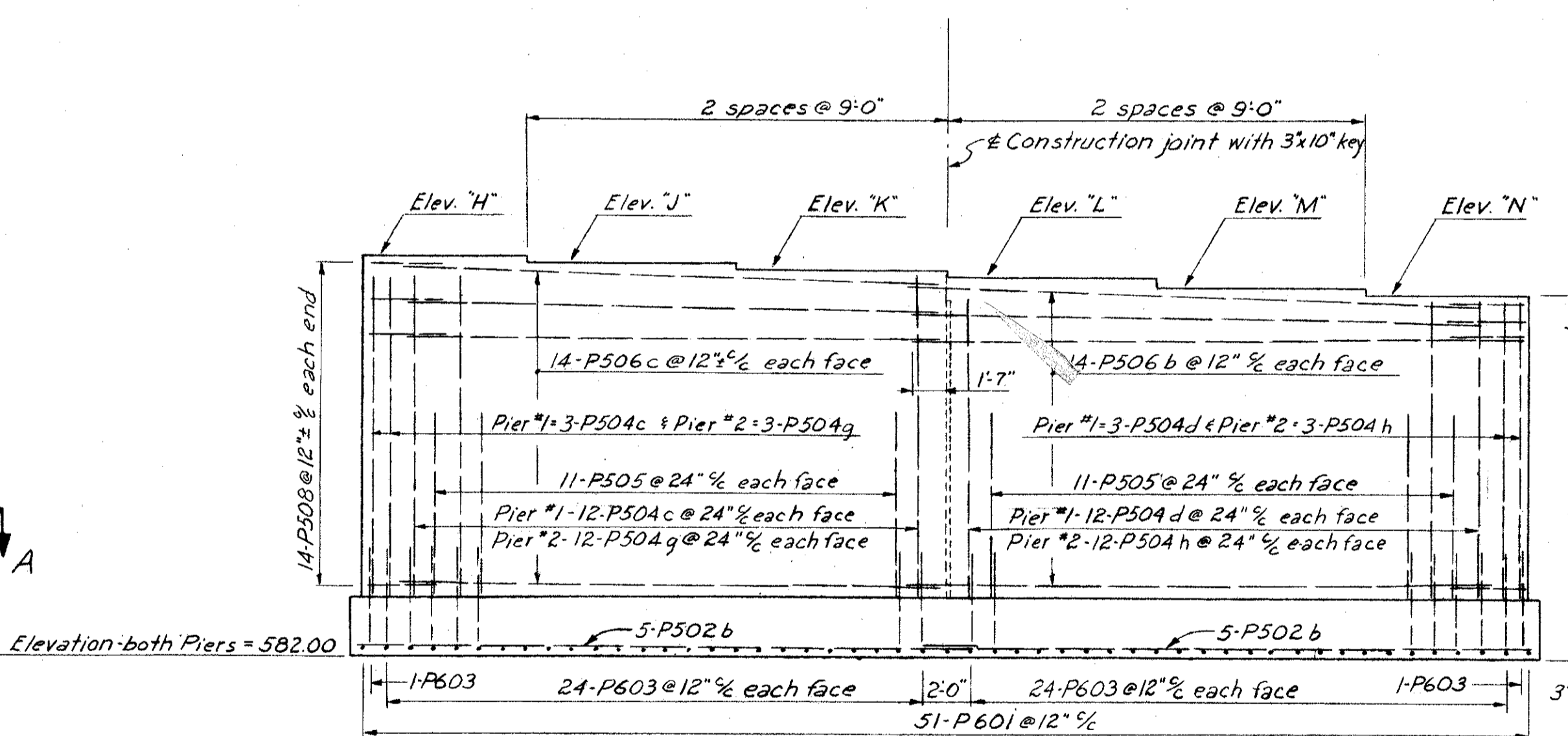


PLAN PIER NO.2 - SOUTH BRIDGE

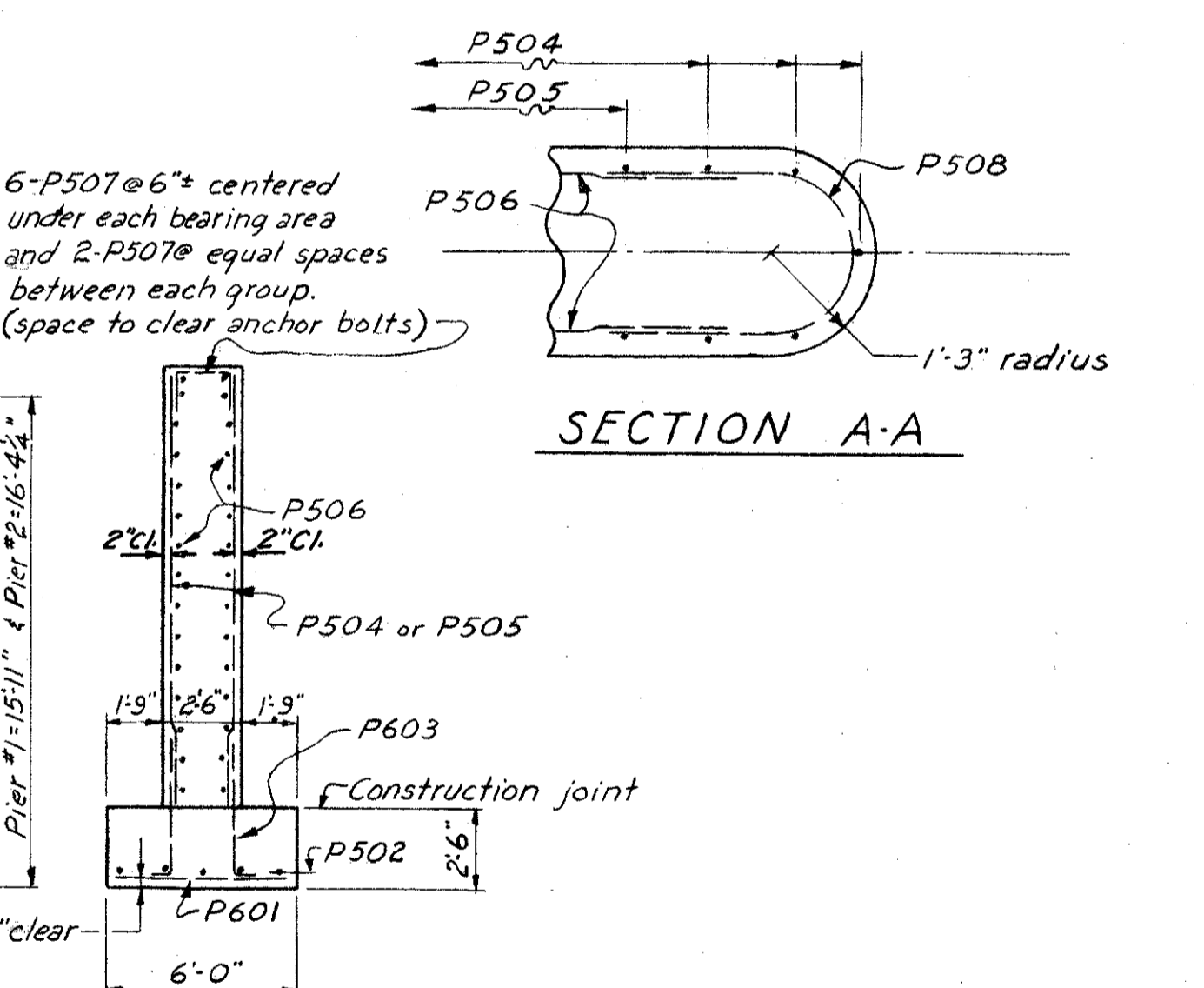
PIER REINFORCING STEEL										
MARK	NUMBER REQUIRED				SIZE	LENGTH	TYPE	WEIGHT		
	NORTH BRIDGE PIER 1	SOUTH BRIDGE PIER 1	SOUTH BRIDGE PIER 2	TOTAL				NORTH BRIDGE	SOUTH BRIDGE	
P501	65	65	51	51	232	6	5'-6"	Str.	1,074	843
P502a	10	10	-	-	20	5	33'-3"	Str.	694	-
P502b	-	-	10	10	20	5	26'-3"	Str.	-	548
P603	126	126	98	98	448	6	5'-0"	Bent	1,923	1,472
P504a	39	-	-	-	39	5	15'-8"	Str.	637	-
P504b	29	-	-	-	29	5	14'-8"	Str.	444	-
P504c	-	-	27	-	27	5	14'-3"	Str.	-	401
P504d	-	-	27	-	27	5	13'-3"	Str.	-	269
P504e	-	39	-	-	39	5	16'-1"	Str.	654	-
P504f	-	29	-	-	29	5	15'-1"	Str.	456	-
P504g	-	-	27	-	27	5	14'-8"	Str.	-	413
P504h	-	-	27	-	27	5	13'-8"	Str.	-	385
P505	58	58	44	44	204	5	8'-0"	Str.	968	734
P506a	32	32	-	-	64	5	37'-6"	Str.	2,503	-
P506b	32	32	28	28	120	5	25'-0"	Str.	1,669	1,460
P506c	-	-	28	28	56	5	23'-6"	Str.	-	1,373
P507	54	54	46	46	200	5	5'-4"	Bent	601	512
P508	32	32	28	28	120	5	7'-3"	Bent	484	423
TOTAL WEIGHT									12,107	8,833



PIER ELEVATION - NORTH BRIDGE

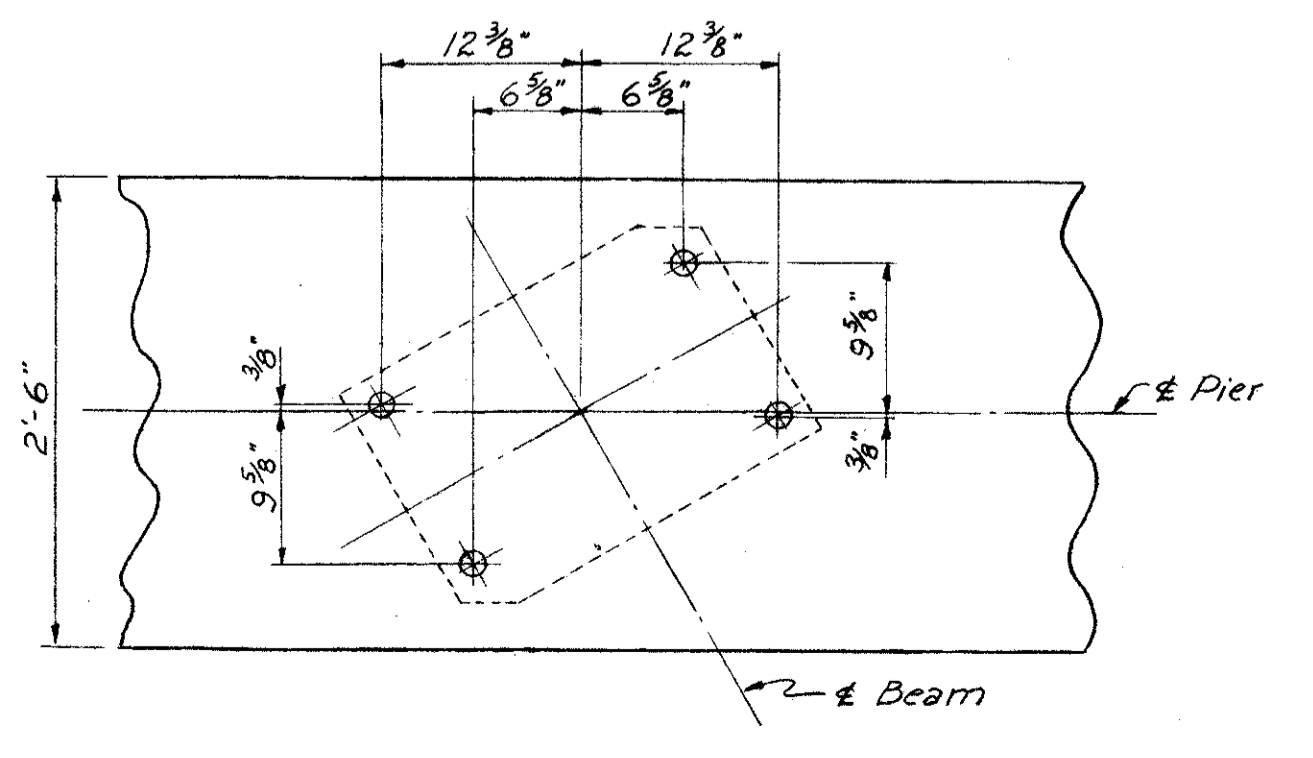


PIER ELEVATION - SOUTH BRIDGE



TYPICAL SECTION

	A.73	B	C.64	D.28	E	F.55	G	H	J.18	K.84	L	M.17	N
Pier No.1	600.85	601.82	600.83	600.83	599.97	599.69	599.29	599.58	599.24	598.60	598.57	598.23	597.82
Pier No.2	601.27	601.52	601.14	600.78	600.41	600.03	599.71	599.20	599.60	599.32	598.98	598.59	598.36



ANCHOR BOLT LAYOUT - PIER NO.1

- NOTES**
- FOOTINGS shall extend a minimum of 2'-6" into solid shale or to the elevation shown, whichever is lower.
 - FOUNDATION BEARING PRESSURE: Pier footings are designed for a maximum bearing pressure of 3.5 tons per square foot.
 - Special care shall be taken in placing reinforcing steel in the bridge seat so that it will not interfere with the drilling of anchor bolt holes.
 - All concrete to be Class "E"

PREPARED BY
CAPITOL ENGINEERING ASSOCIATES, DILLSBURG, PA.
FOR
STATE OF OHIO
DEPARTMENT OF HIGHWAYS
DIVISION OF DESIGN AND CONSTRUCTION
BUREAU OF BRIDGES

PIERS
BRIDGE NO. LAK-2-0527
RELOC. S.R.2 OVER CHAGRIN RIVER
LAKE COUNTY
STA. 179 + 25.00'

DESIGNED	DRAWN	TRACED	CHECKED	REVISED DATE	REVISED
JFM	JFM			7-30-59	