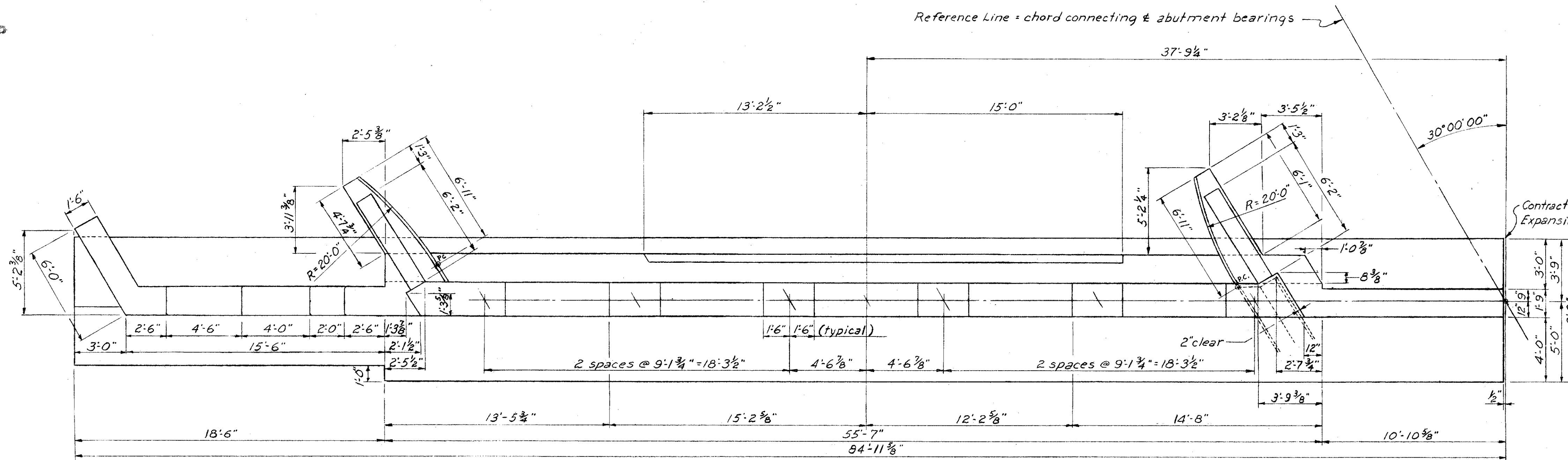
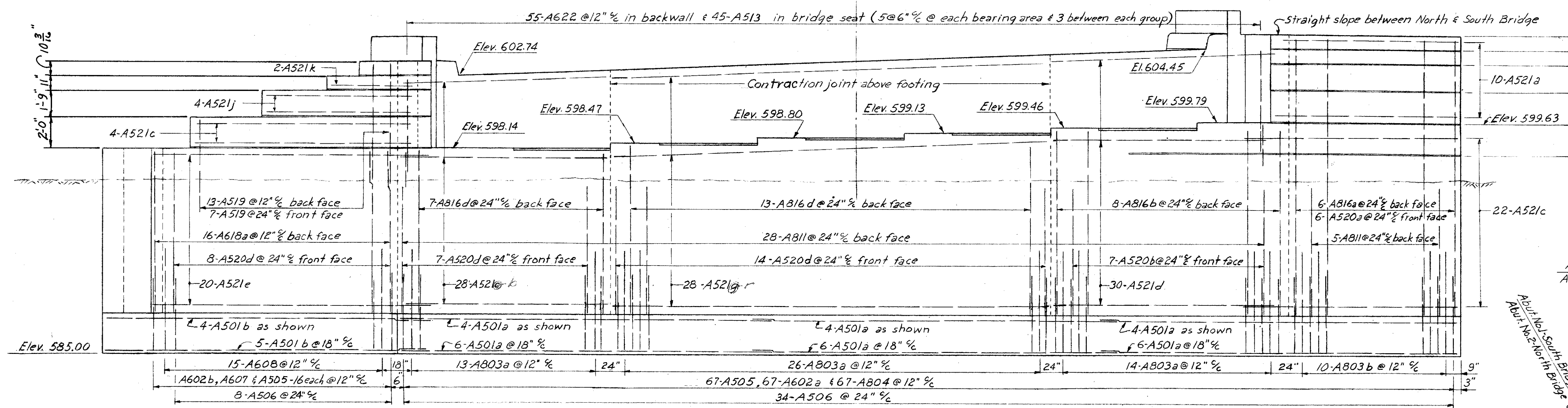


NOTES

- FOOTINGS shall extend a minimum of 3' into solid shall or to the elevation shown, whichever is lower.
- FOUNDATION BEARING PRESSURE: Abutment footings are designed for a maximum bearing pressure of 2.5 tons per square foot.
- POROUS BACKFILL, 2 feet thick, full length of abutment and wings shall extend up to the underside of the approach slab or to the finished ground surface.
- All abutment concrete shall be Class "E".  
Railing parapet concrete shall be Class "C".

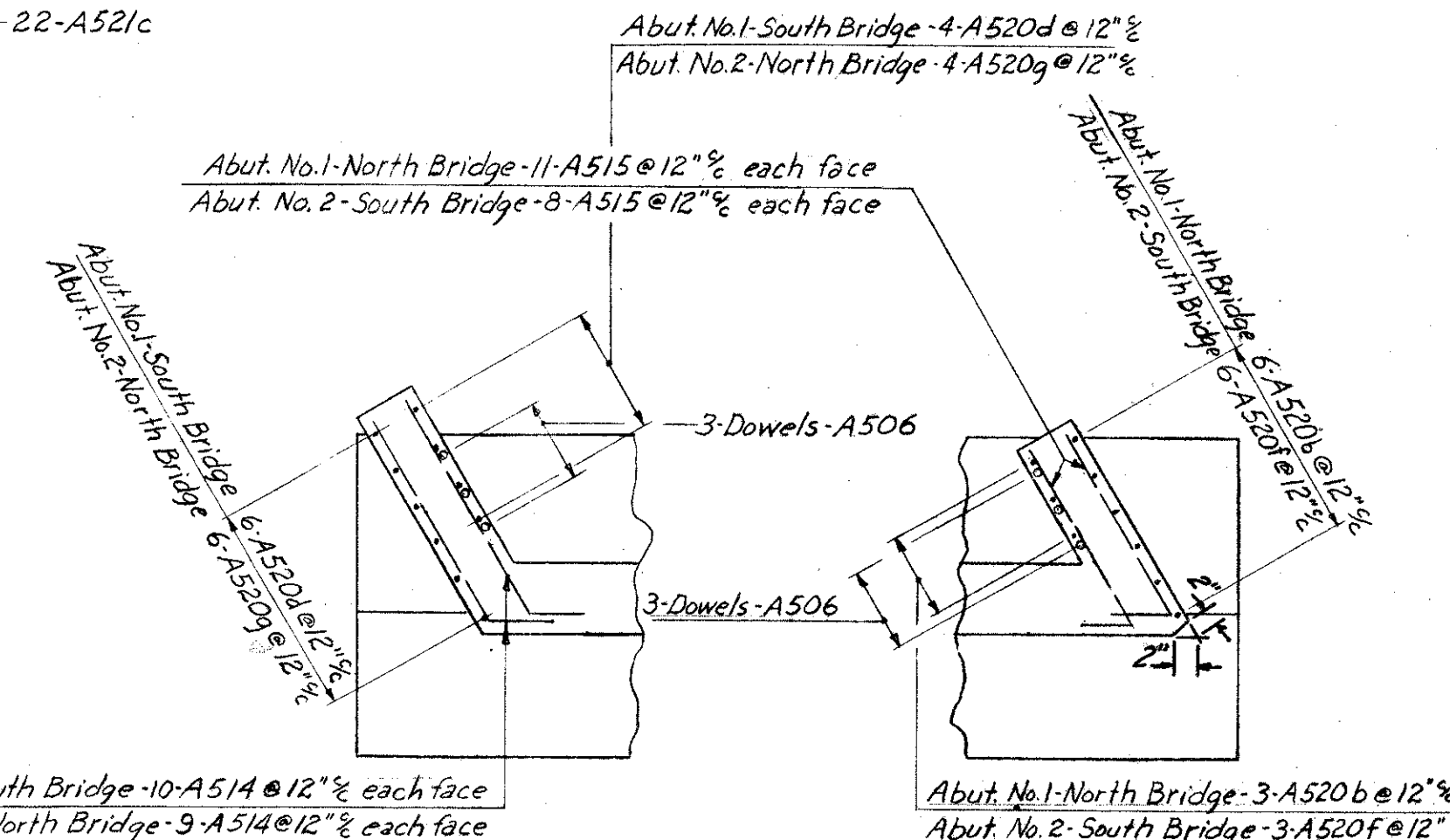


PLAN ABUTMENT NO.1 SOUTH BRIDGE

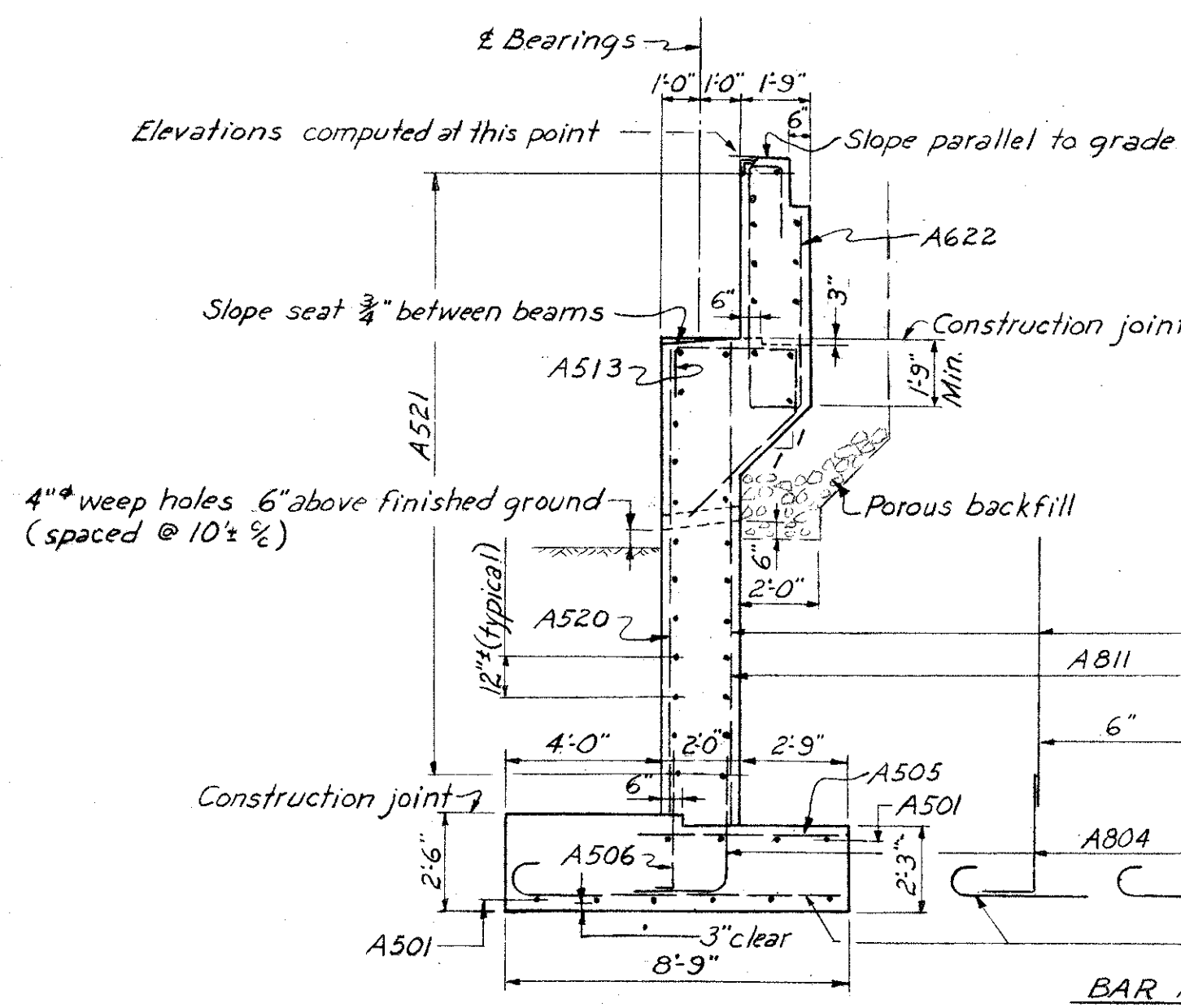


ELEVATION ABUTMENT NO.1 SOUTH BRIDGE

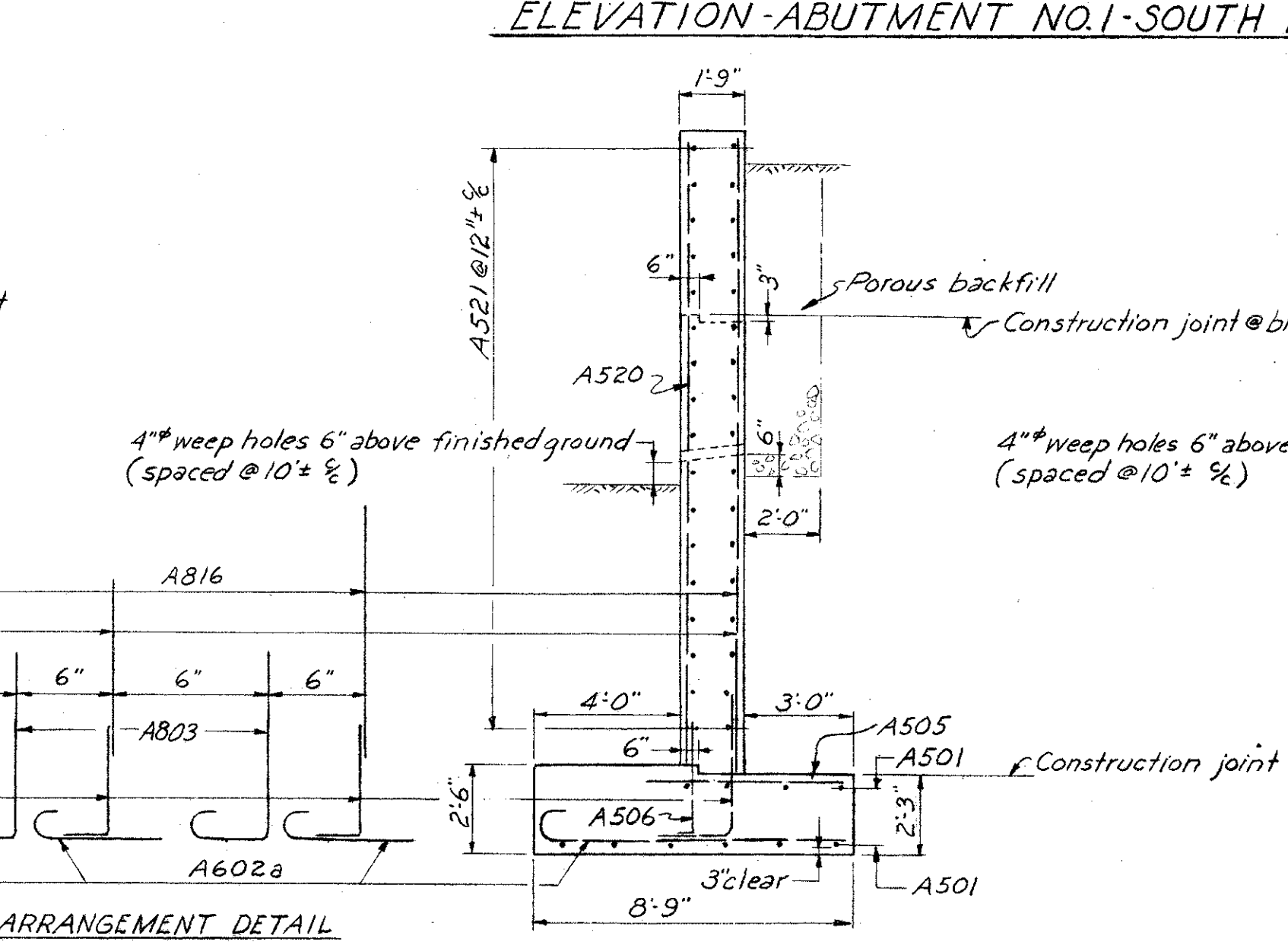
NOTE: Reinforcing steel not shown in front face.



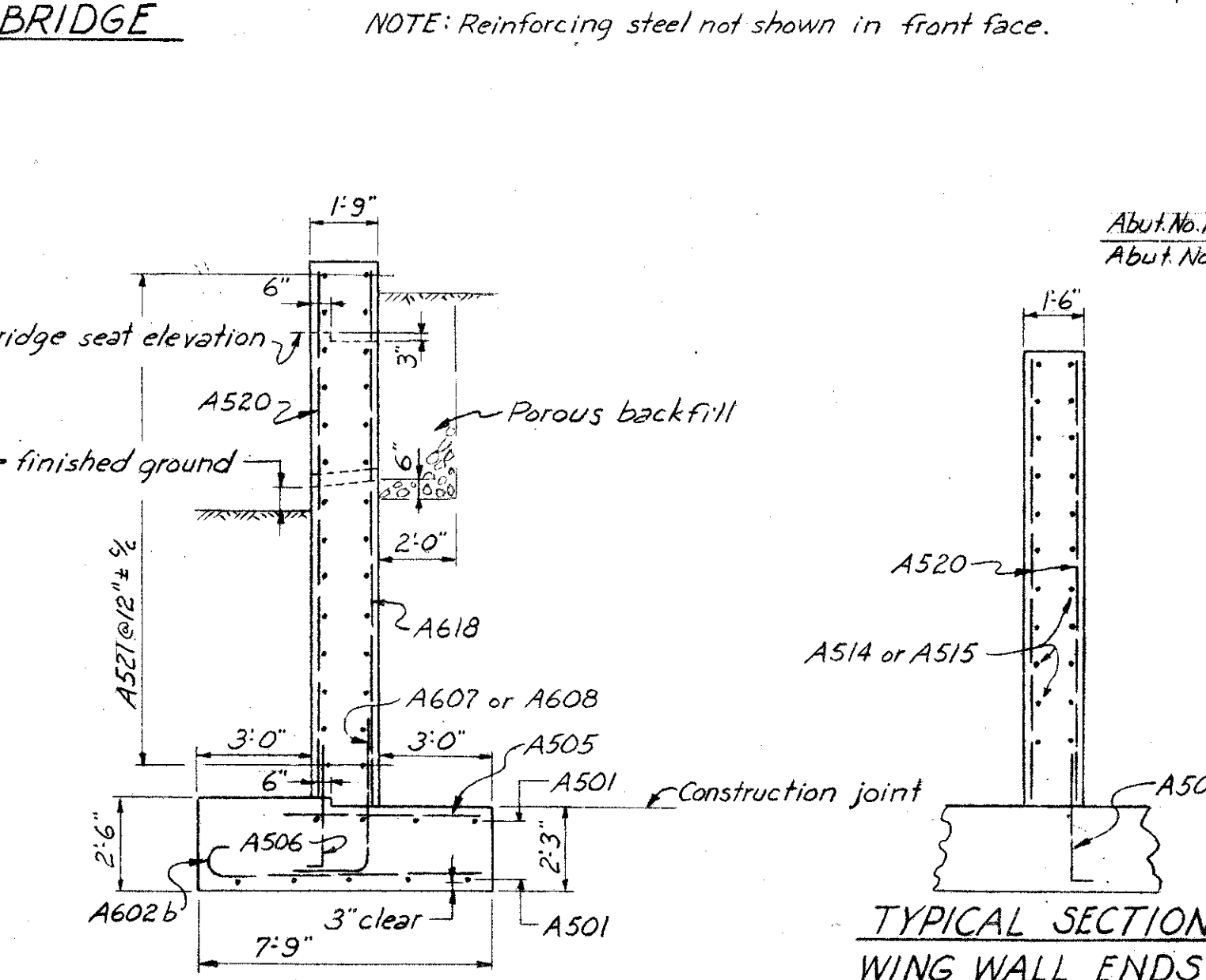
REINFORCING DETAILS-WING ENDS



TYPICAL SECTION ABUTMENT NO.1



TYPICAL WALL SECTION @ ABUTMENT NO.1 OVER 18 FEET HIGH



TYPICAL WALL SECTION-BOTH ABUTMENTS UNDER 18 FEET HIGH

TYPICAL SECTION WING WALL ENDS

PREPARED BY  
CAPITOL ENGINEERING ASSOCIATES, DILLSBURG, PA.  
FOR  
STATE OF OHIO  
DEPARTMENT OF HIGHWAYS  
DIVISION OF DESIGN AND CONSTRUCTION  
BUREAU OF BRIDGES  
ABUTMENT NO. 1 SOUTH BRIDGE  
BRIDGE NO. LAK-2-0527  
RELOC. S.R.2 OVER CHAGRIN RIVER  
LAKE COUNTY  
STA. 179+25.00

| DESIGNED | DRAWN | TRACED | CHECKED | REVISED DATE | REVISED |
|----------|-------|--------|---------|--------------|---------|
|          |       |        |         |              | 3-17-57 |