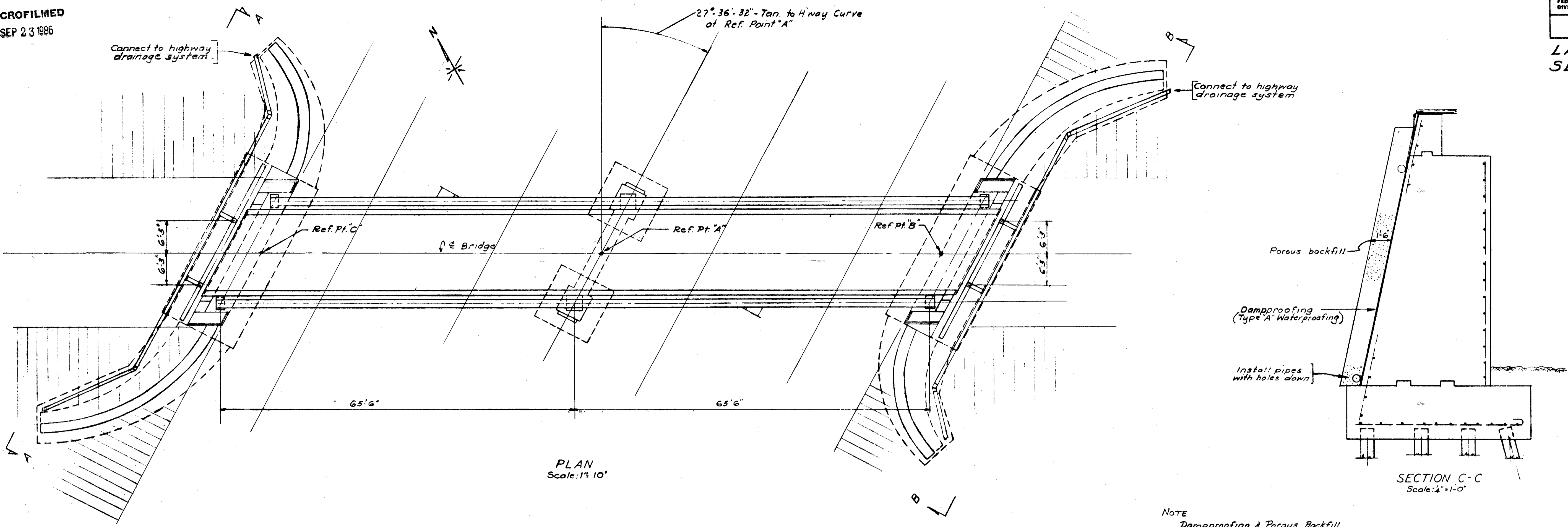


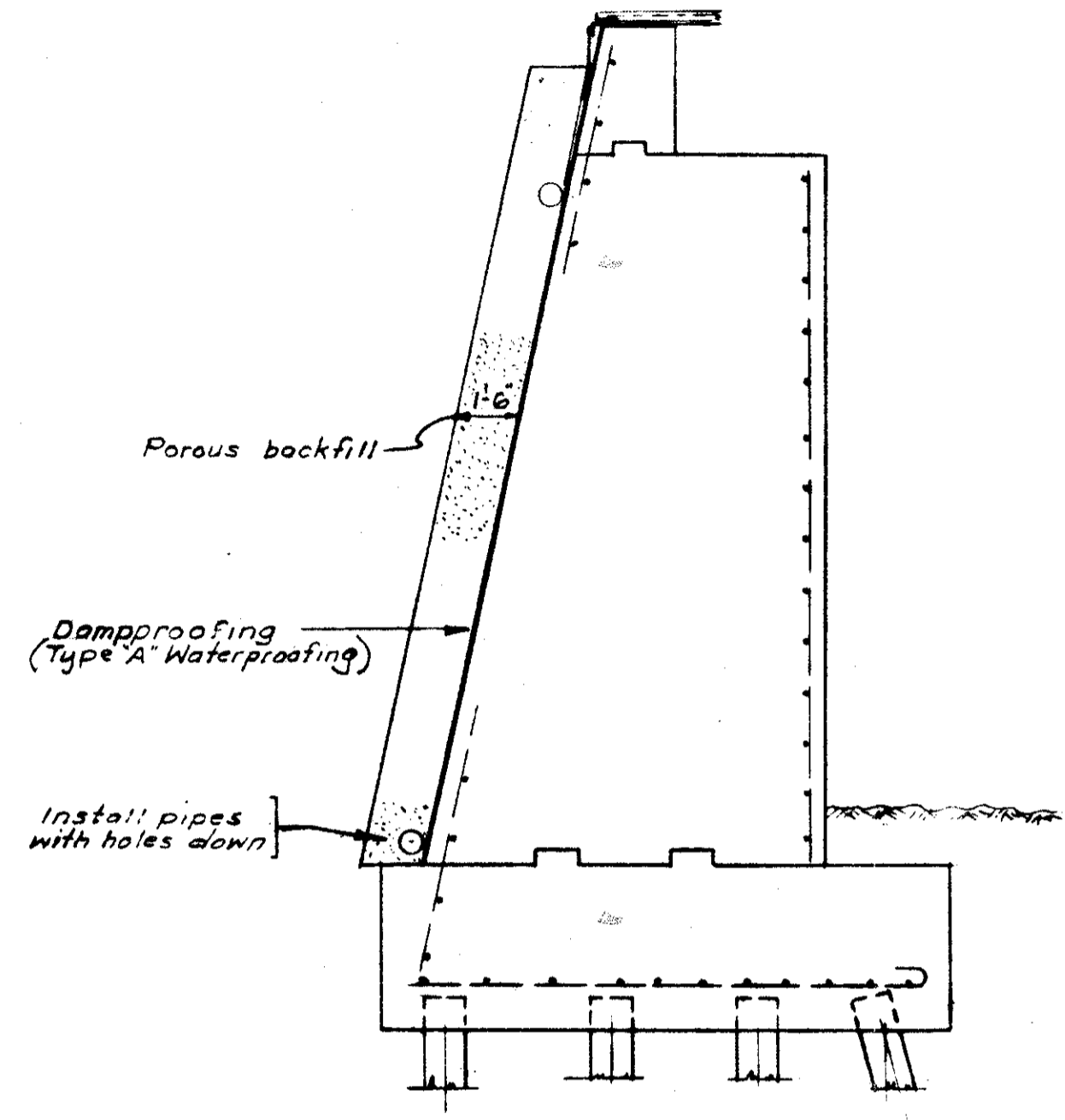
MICROFILMED
SEP 23 1986

FED. NO. DIVISION	STATE	PROJECT	250 297
2	OHIO		

LAKE COUNTY
SEC LAK-2-4.42

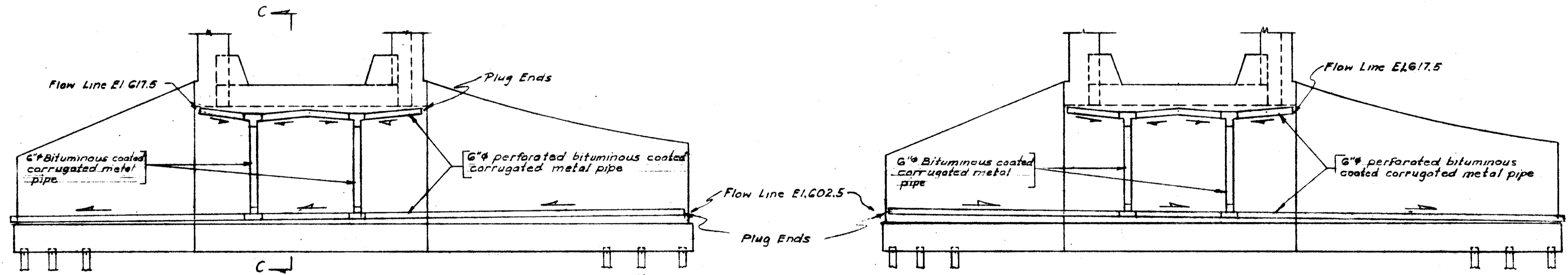


PLAN
Scale: 1" = 10'



SECTION C-C
Scale: 1/4" = 1'-0"

NOTE
Dampproofing & Porous Backfill
on backs of all abutments &
wings above footings.



SECTION A-A
Scale: 1" = 10'

SECTION B-B
Scale: 1" = 10'

NOTE:
Slope pipes down 1%
in direction of arrows

NOTE
For Estimated Quantities see Sheet #4

Correct *Robert R. ...*
Engineer of Structures
John C. ...
Assistant Chief Engineer
Approved *C. E. ...*
Chief Engineer

REVISIONS		
Date	By	Description
5-29-59	J.H.Z.	Piling Shown

Highway Bridge No. LAK-2-0453
N.Y.C. SYSTEM OFFICE OF CHIEF ENGINEER NEW YORK, N.Y.
BRIDGE #56 1/2 C.E.I. Co. SPUR
GRADE SEPARATION
LAKELAND EXPRESSWAY (S.R.2)
WILLOUGHBY, OHIO
SUBSTRUCTURE DRAINAGE PLAN
Western District Lake Division Sheet 11 of 11
Scale: as shown Dec. 22, 1958 Vol. Sec. 203 File No. 93143

