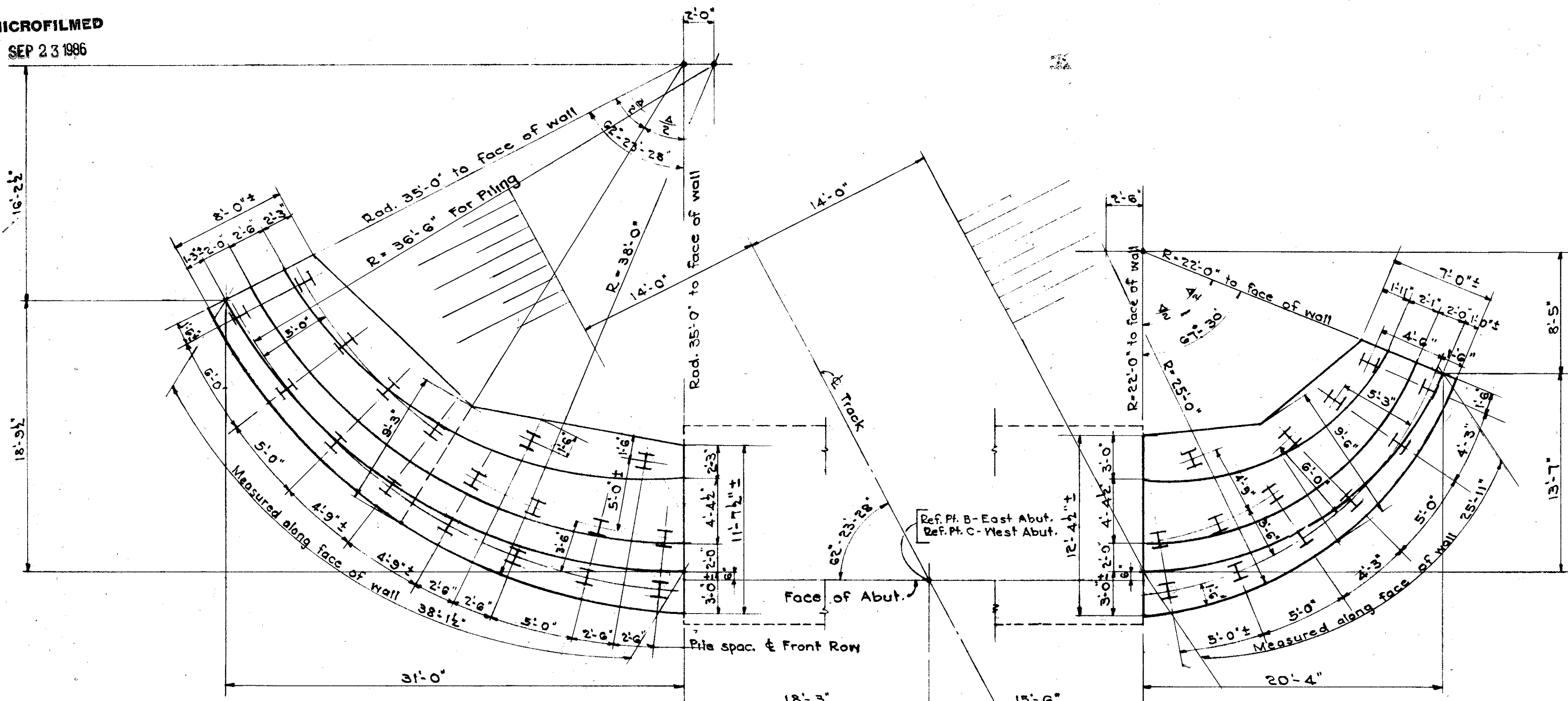


MICROFILMED
SEP 23 1986

FED. DIVISION	STATE	PROJECT	247 297
2	OHIO		

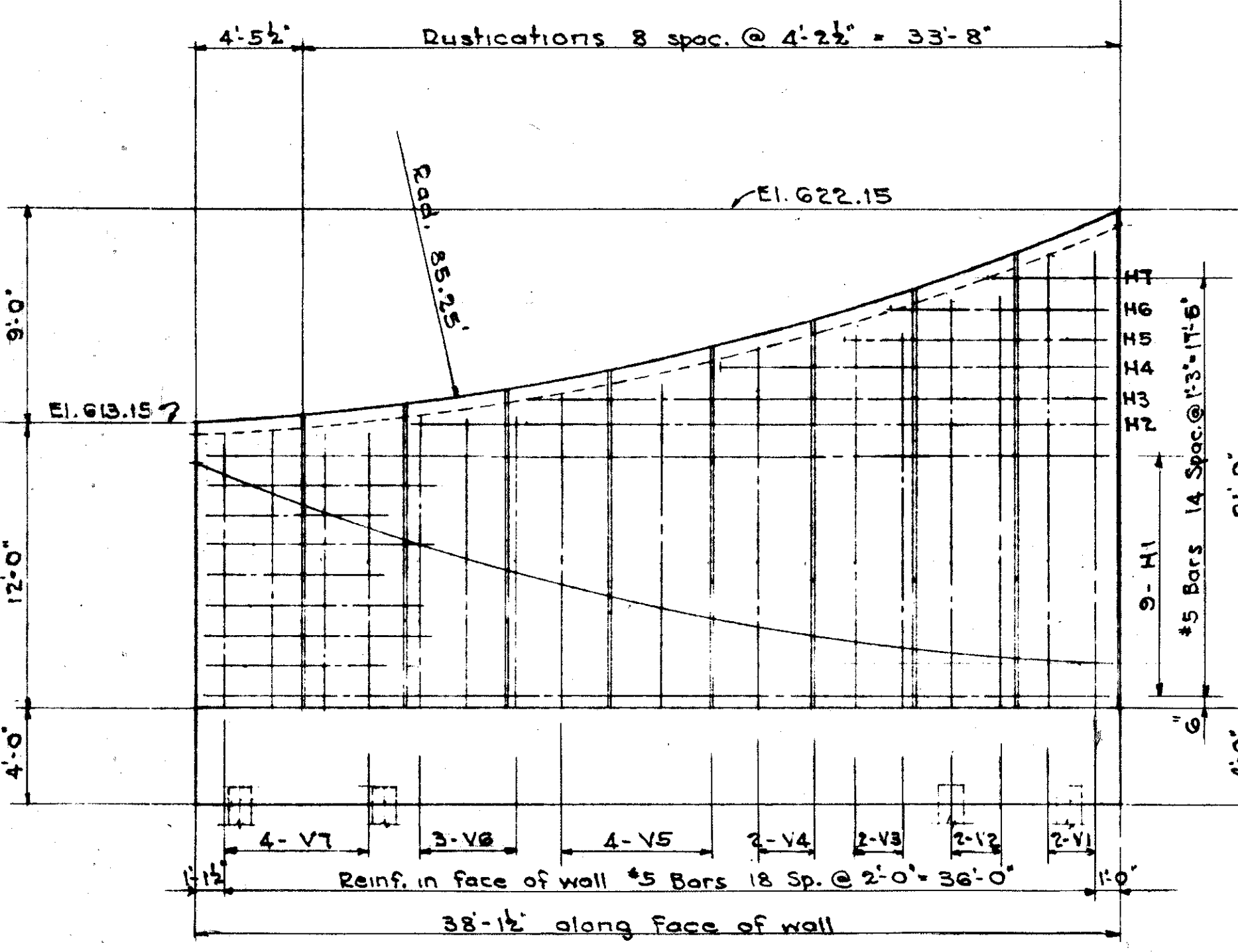
LAKE COUNTY
SEC LAK-2-442



PLAN OF WINGS

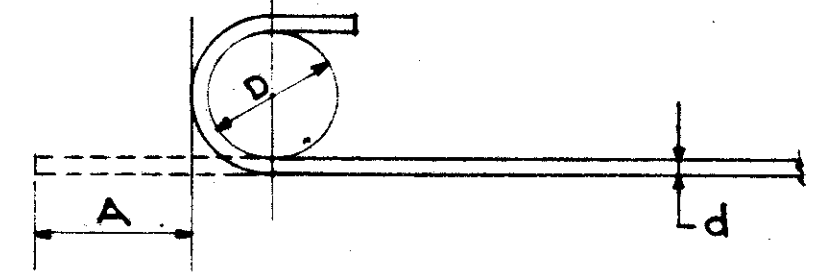
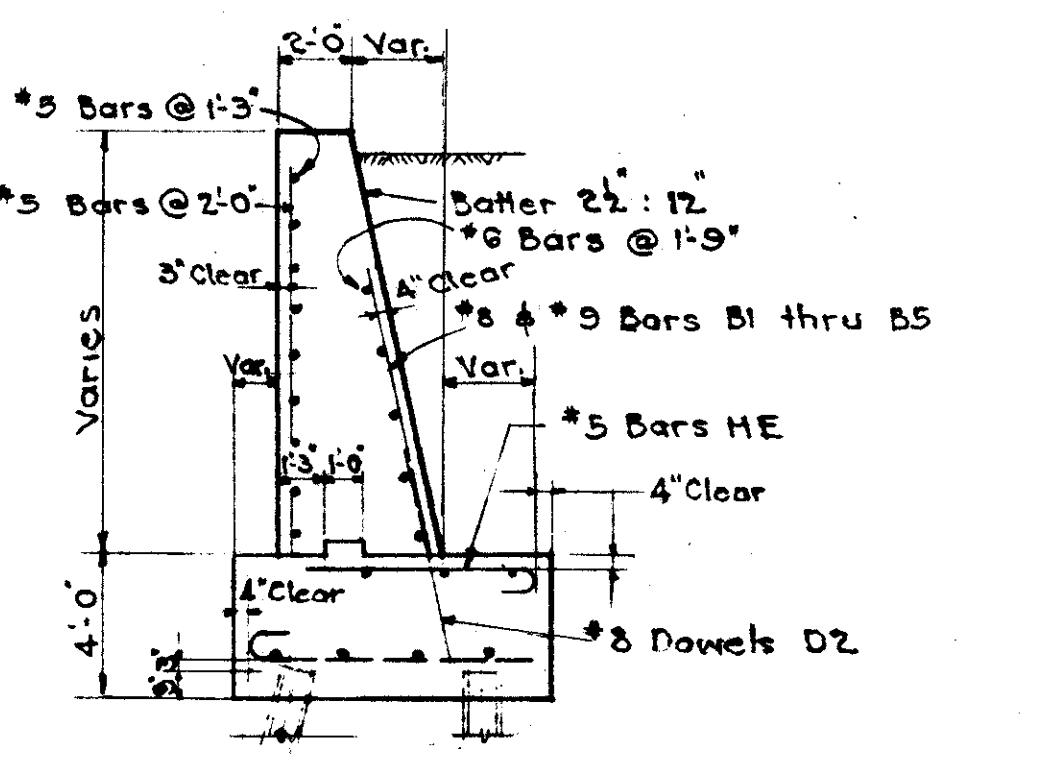
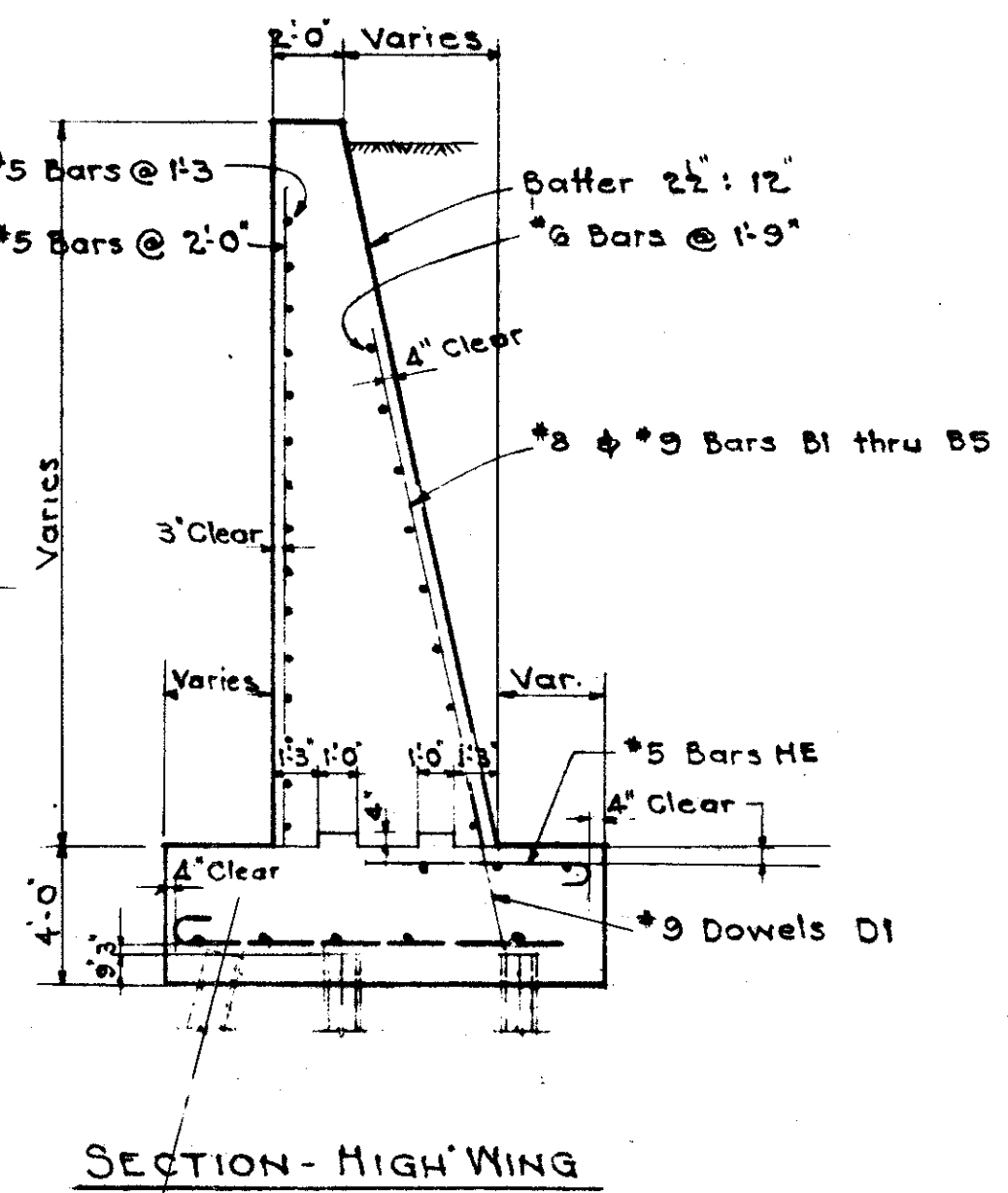
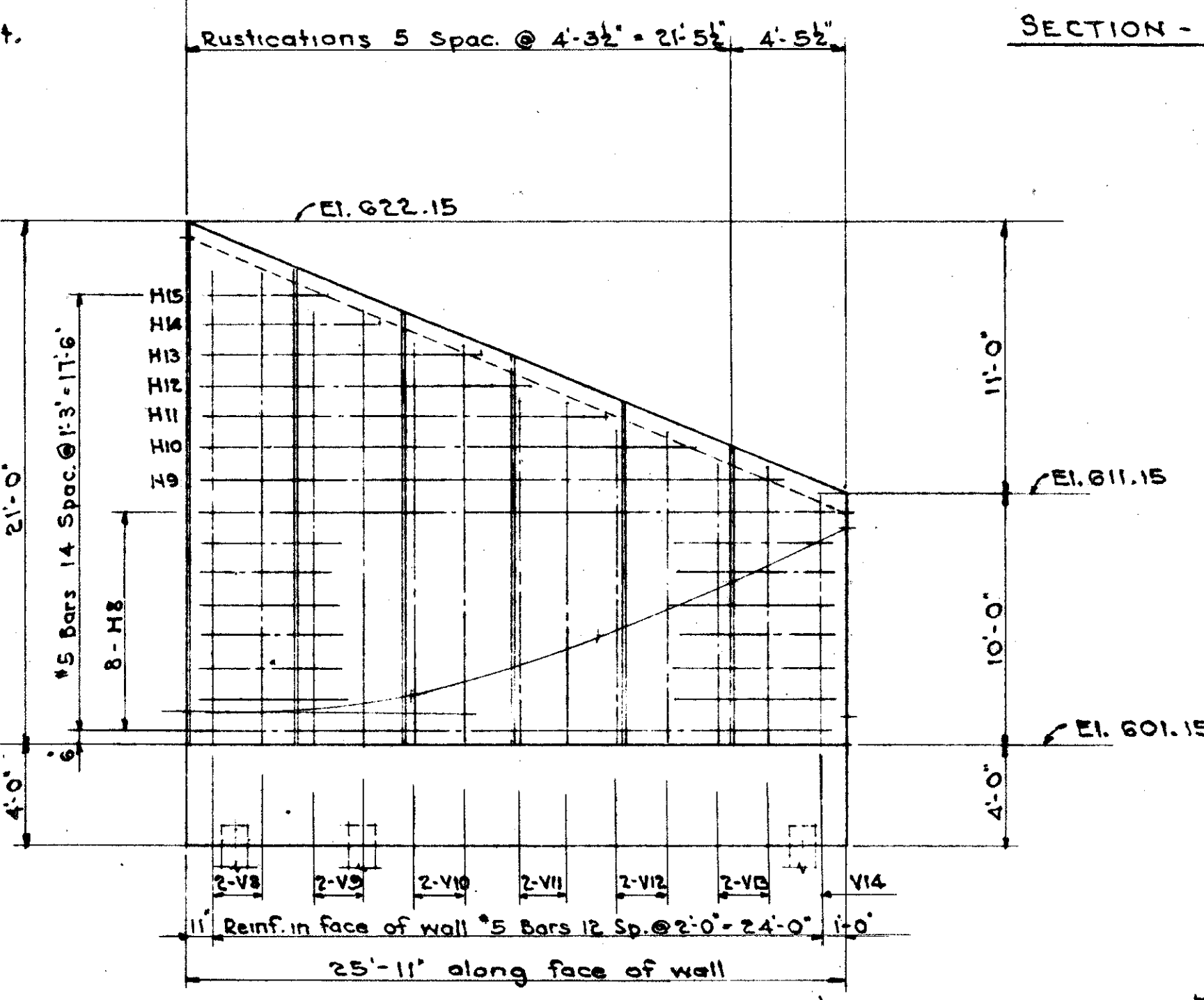
Note: East & West Abut. Wings similar
Scale: $\frac{3}{16}'' = 1'-0''$

Note: All Piles 12" B.P. 53"
Estimate Pay Length = 25 Ft.



ELEVATION OF WINGS

Scale: $\frac{3}{16}'' = 1'-0''$



Size 'd'	D	A
#5	4"	7"
#8	7"	13"
#9	9"	15"

REINFORCING BARS - 4 WING WALLS				
MARK	No.	SIZE	LENGTH	REMARKS
T1	34	9	11'-3"	Hook one end. Footing
T2	20	9	9'-3"	
T3	20	8	8'-1"	
SC1	2	7	38'-0"	Curved, bend in field as reqd.
SC2	2	7	36'-0"	
SC3	2	7	34'-0"	
SC4	2	7	31'-6"	
SC5	2	7	26'-0"	
SC6	2	7	23'-6"	
SC7	2	7	21'-6"	
SC8	2	7	19'-0"	
HE	74	5	6'-10"	Hook one end. Footing
HS1	4	5	14'-0"	Straight. Footing
HS2	2	5	9'-0"	
HS3	2	5	8'-0"	
HC1	2	5	31'-0"	Curved, bend in field as reqd.
HC2	2	5	33'-6"	
HC3	2	5	19'-6"	
HC4	2	5	22'-0"	
D1	70	9	6'-0"	Straight. Dowels at heel
D2	34	8	6'-0"	
B1	10	9	13'-0"	Straight, back of wing
B2	8	9	12'-0"	
B3	10	9	10'-6"	
B4	32	9	8'-0"	
B5	24	8	8'-0"	
SD1	10	6	33'-0"	Curved, cut & bend in field as reqd.
SD2	2	6	25'-0"	
SD3	2	6	18'-0"	
SD4	4	6	10'-0"	
SD5	10	6	20'-0"	
SD6	2	6	19'-0"	
SD7	2	6	14'-0"	
SD8	4	6	5'-0"	
V1	4	5	19'-0"	Straight, face of wing
V2	4	5	17'-6"	
V3	4	5	16'-0"	
V4	4	5	15'-0"	
V5	8	5	13'-0"	
V6	6	5	12'-0"	
V7	8	5	11'-6"	
V8	4	5	18'-6"	
V9	4	5	17'-3"	
V10	4	5	16'-3"	
V11	4	5	14'-0"	
V12	4	5	12'-6"	
V13	4	5	11'-0"	
V14	2	5	10'-0"	
H1	18	5	37'-0"	Curved, bend in field as reqd.
H2	2	5	28'-6"	
H3	2	5	24'-0"	
H4	2	5	16'-0"	
H5	2	5	9'-0"	
H6	2	5	9'-0"	
H7	2	5	5'-0"	
H8	16	5	25'-0"	
H9	2	5	23'-0"	
H10	2	5	19'-6"	
H11	2	5	16'-0"	
H12	2	5	13'-0"	
H13	2	5	11'-0"	
H14	2	5	7'-0"	
H15	2	5	5'-0"	
HS4	2	7	8'-0"	Straight. Footing
HS5	2	7	12'-0"	

Correct *John L. Babel*
Engineer of Structures

Correct *Geo. F. Robinson*
Assistant Chief Engineer

Approved *C. E. Sanderford*
Chief Engineer

Highway Bridge No. LAK-2-0453

REVISIONS	
Date	Description
5-20-59 R.A.L.	Revised for Piling

N.Y.C. SYSTEM OFFICE OF CHIEF ENGINEER NEW YORK, N.Y.
BRIDGE No. 56 1/2 C.E.I. Co. SPUR
GRADE SEPARATION
LAKELAND EXPRESSWAY (S.R.2)
WILLOUGHBY, OHIO
MASONRY PLAN-WINGS

Western District Lake Division Sheet 8 of 11
Scale: as shown Dec. 22, 1958 Val. Sec. 203 File No. 93143