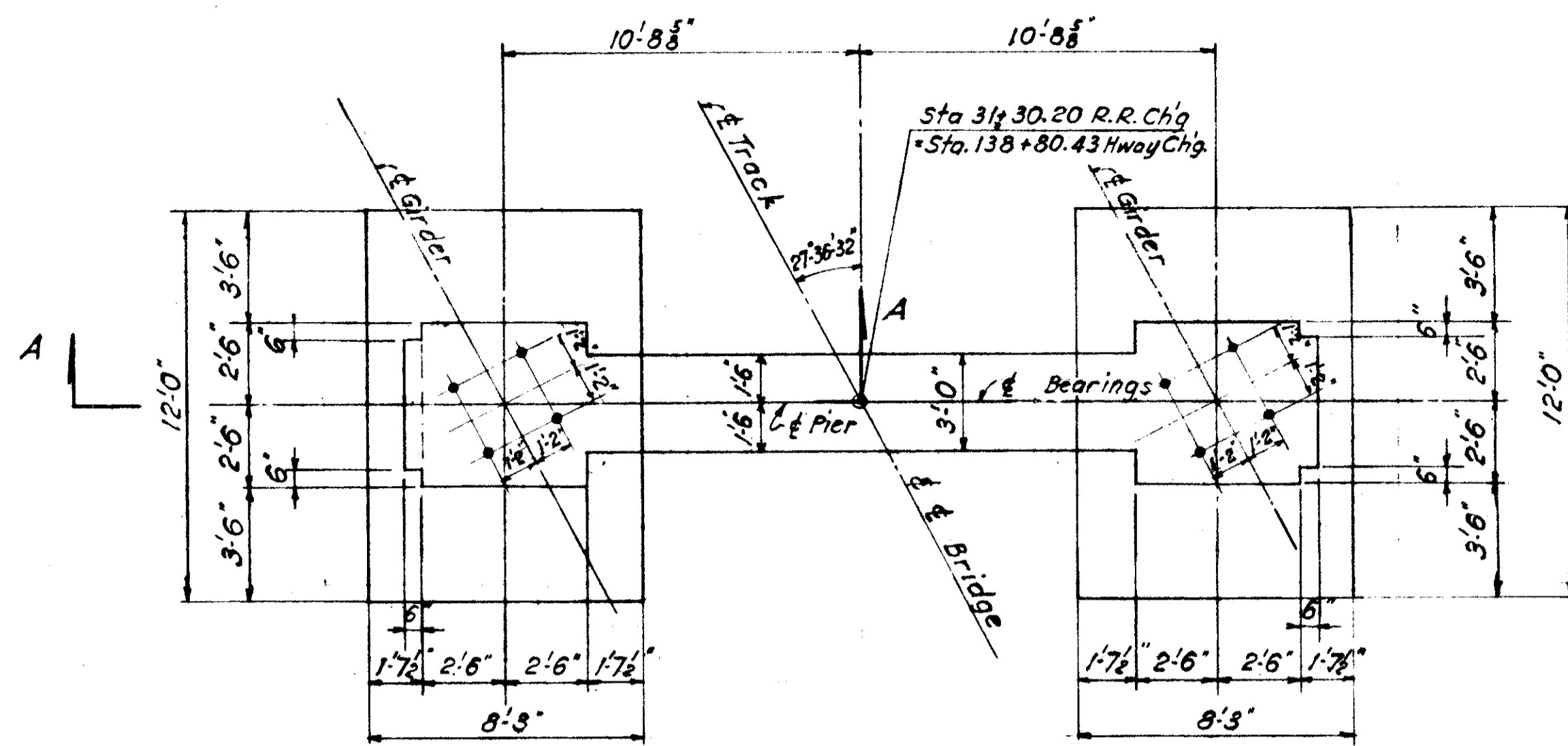


MICROFILMED
SEP 23 1986

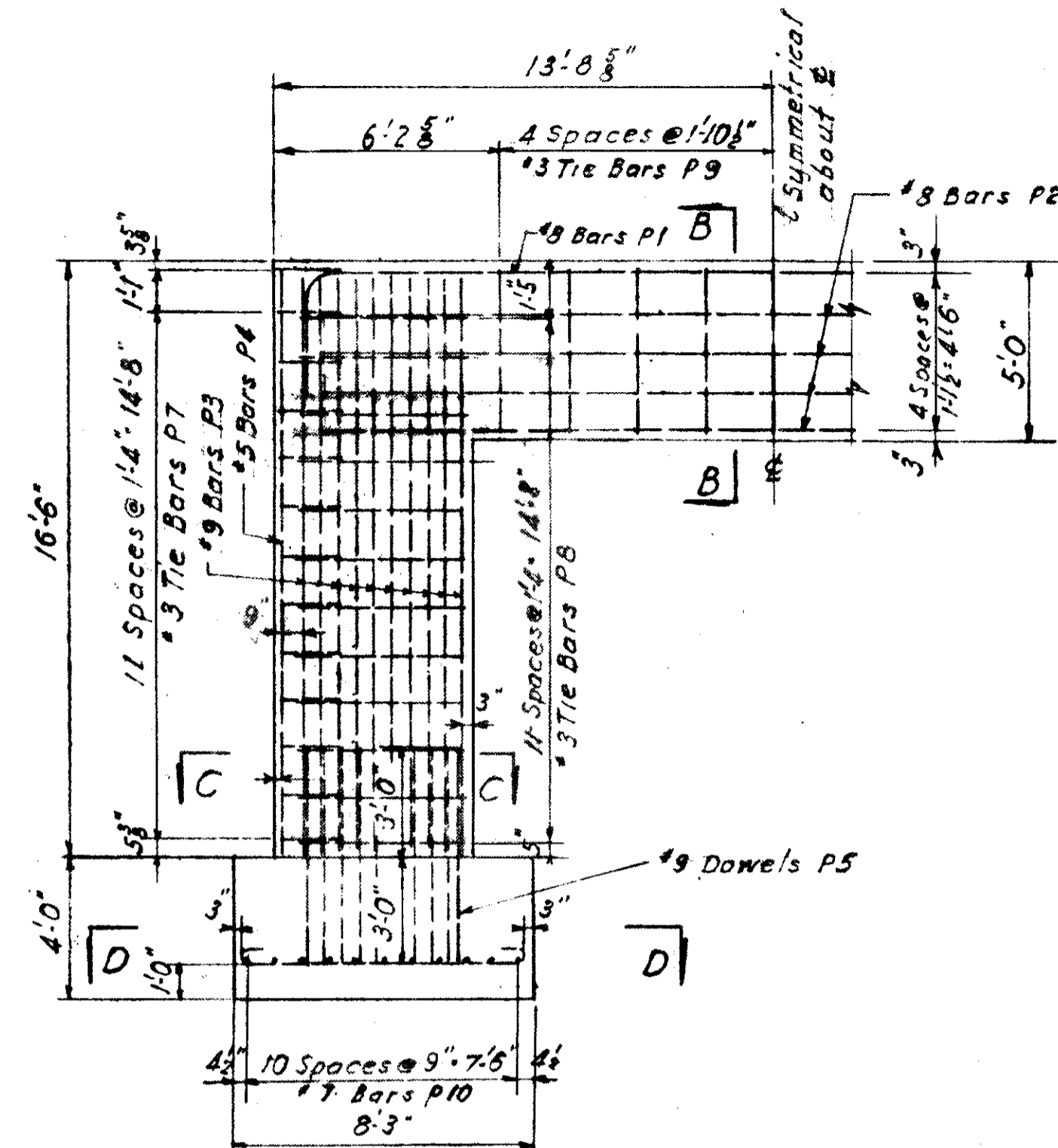
LAKE COUNTY
SEC LAK-2-442

FED. DIVISION	STATE	PROJECT	245 297
2	OHIO		



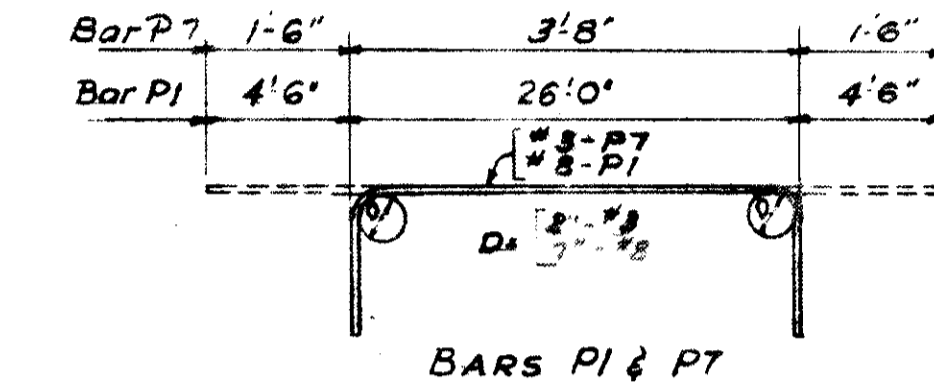
PLAN
Scale 1/4" = 1'-0"

Note:-
Tops of Columns to be poured 1/2" high and bush hammered to exact elevation, @ B.G.
For detail of preformed anchor bolt holes see sheet 7

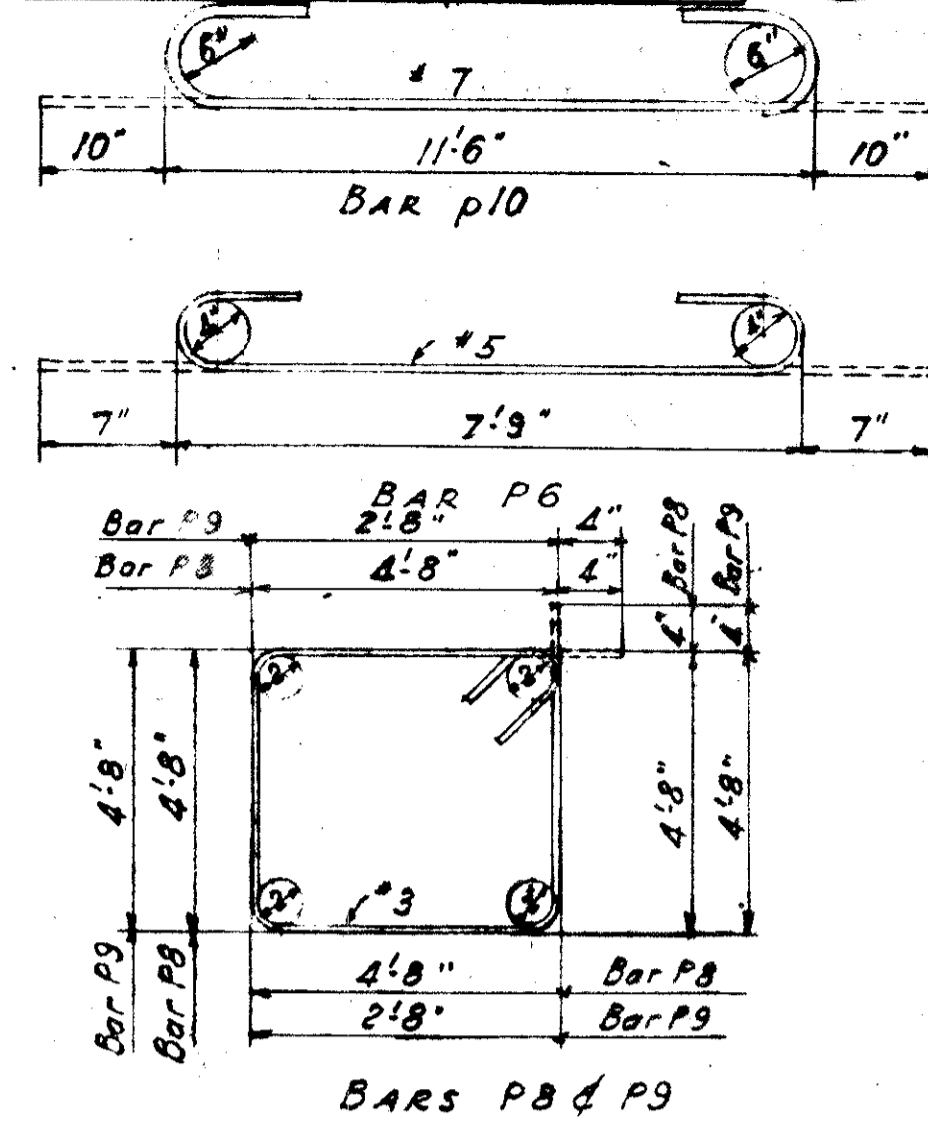


SECTION A-A
Scale 1/4" = 1'-0"

MARK	No	SIZE	LENGTH	REMARKS
P1	6	#8	35'-0"	Bend Both Ends
P2	12	#8	24'-6"	Straight
P3	72	#9	16'-0"	Straight
P4	8	#5	16'-3"	Straight
P5	72	#9	6'-0"	Straight
P6	24	#5	8'-11"	Hook Both Ends
P7	26	#3	6'-8"	Bend Both Ends
P8	24	#3	19'-4"	Hoops - See detail
P9	9	#3	15'-4"	Hoops - See detail
p10	22	#7	13'-2"	Hook Both Ends



BARS P1 & P7



BARS P8 & P9

GENERAL NOTES - SUBSTRUCTURE

SPECIFICATIONS

State of Ohio, Department of Highways, Construction and Material Specifications Jan. 1959 and revisions thereof.

CONCRETE

Concrete in abutment walls, wingwalls and all footings to be Class "E", concrete in pier above footings to be Class "C". If additional construction joints are approved by the Engineer, they shall be keyed joints and shall be protected by leaded waterstops in the same manner as shown for expansion joints. All exposed horizontal surfaces of expansion joints to be sealed with self-healing bridge cement.

REINFORCING STEEL

All reinforcing bars to be intermediate Grade Billet Steel, and of a deformed type, meeting the requirements of ASTM Des. A305

SURFACE FINISH OF CONCRETE

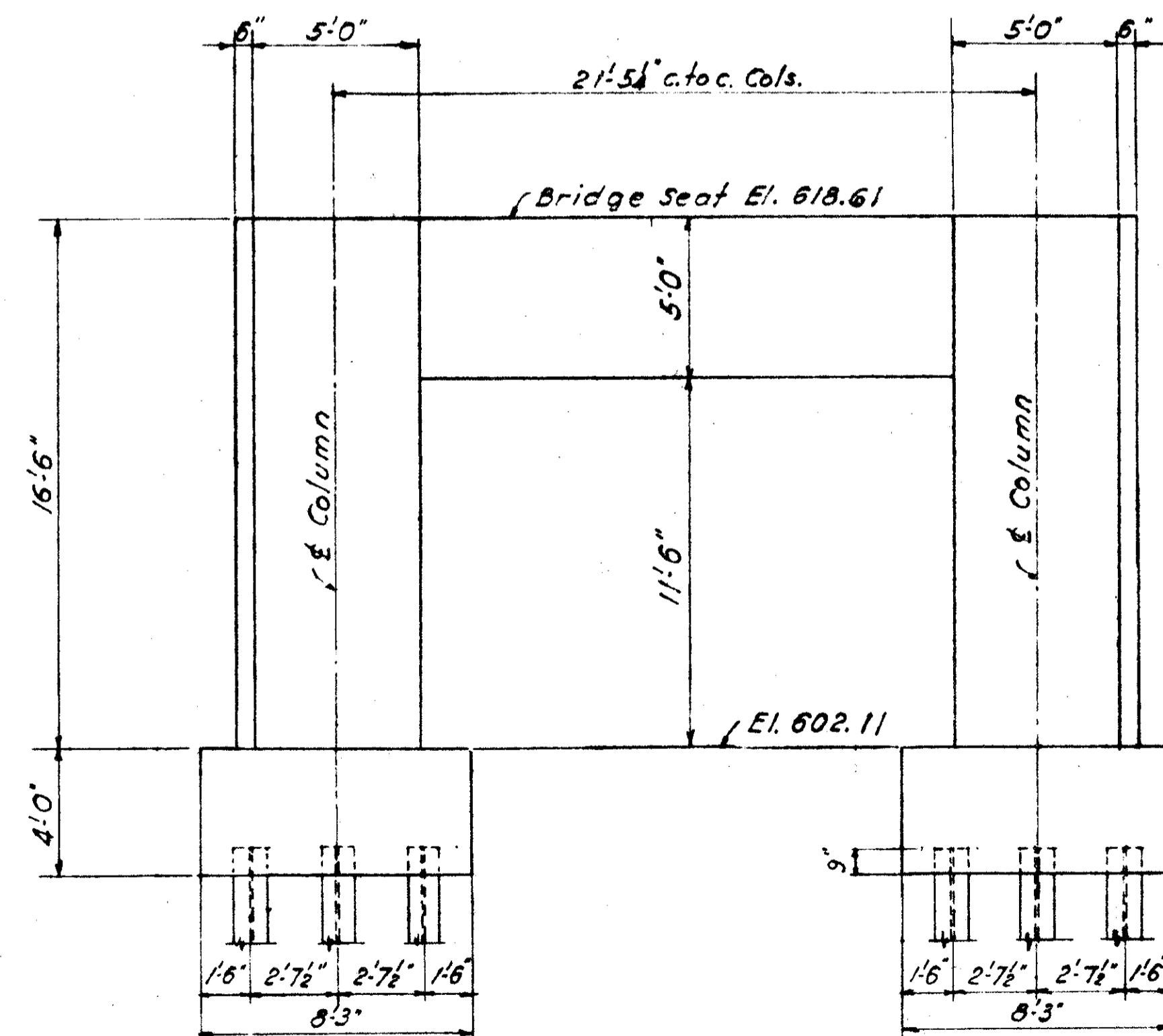
Form liner shall be used on all exposed surfaces of abutments, wings, pylons and pier. These surfaces shall be grout cleaned according to Item S-1.22. The rubbing of any concrete surface will not be permitted.

DAMP-PROOFING

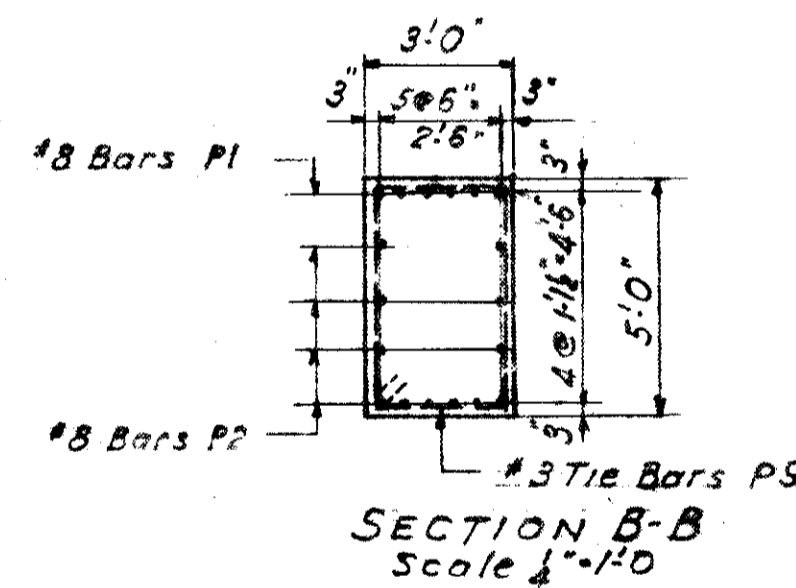
Damp-proofing to be Type "A" Waterproofing and to be applied to the backs of abutments and wings above footings.

FOUNDATION PILING

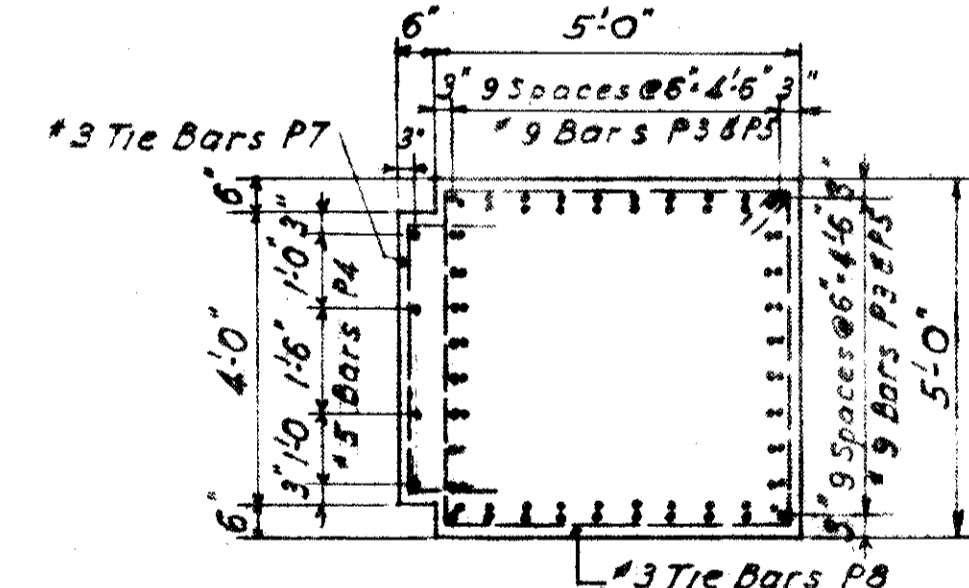
To be steel H piles, 12" B.P. 53" driven to shale.



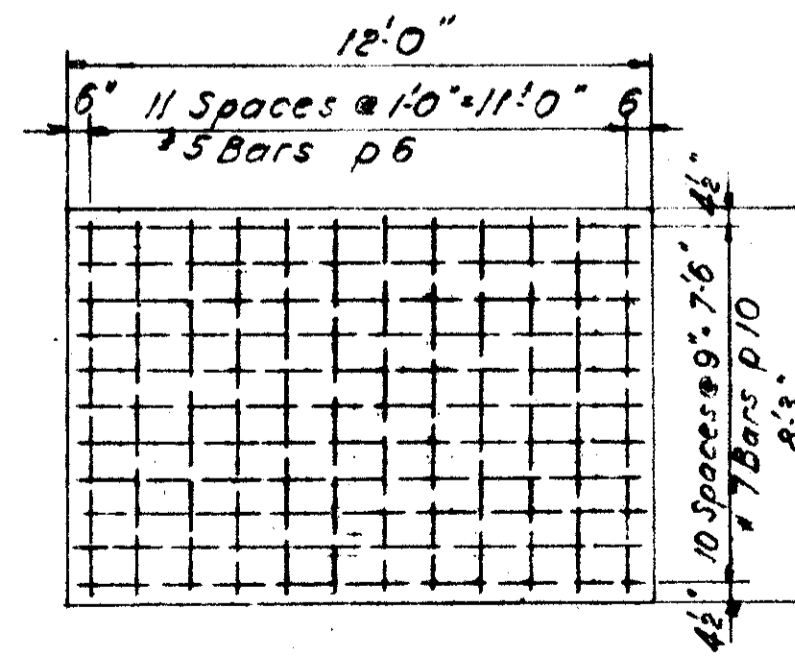
ELEVATION
Scale 1/4" = 1'-0"



SECTION B-B
Scale 1/4" = 1'-0"

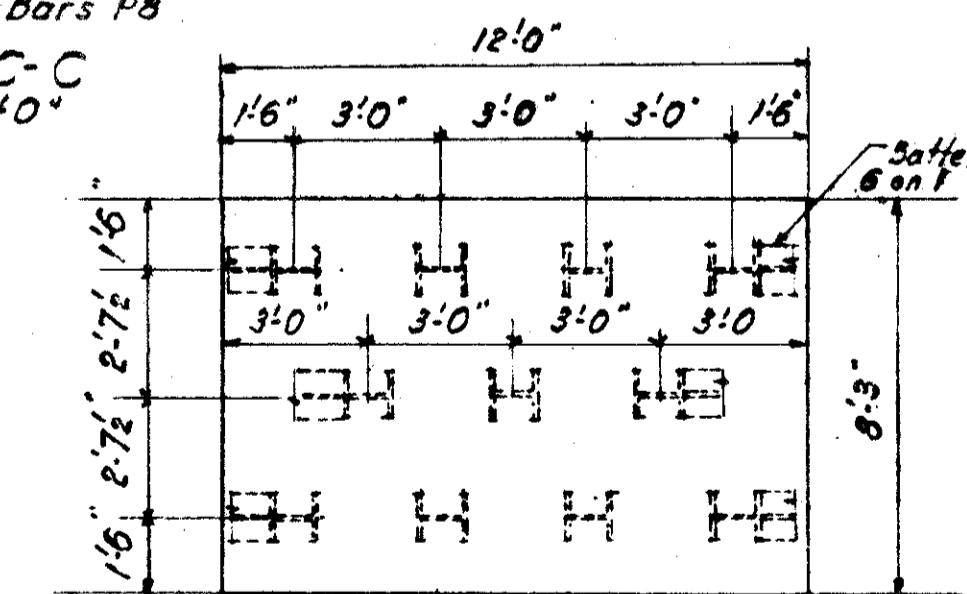


SECTION C-C
Scale 1/4" = 1'-0"



SECTION D-D
Scale 1/4" = 1'-0"

All Piles 12" B.P. 53
Estimate Pay Length 25'-0"



PILE PLAN
Scale 1/4" = 1'-0"

Correct:

Approved: *John E. Huber*
Engineer of Structures
John E. Huber
Assistant Chief Engineer
John E. Huber
Chief Engineer

Date	By	Description	Checked
4-12-59	R.C.	FOOTINGS REVISED, PILES ADDED	C.F.P.

Highway Bridge No. LAK-2-0453

N.Y.C. SYSTEM	OFFICE OF CHIEF ENGINEER	NEW YORK, N.Y.
BRIDGE #56 1/2	C.E.I. Co. SPUR	
GRADE SEPARATION		
LAKELAND EXPRESSWAY (S.R.2)		
WILLOUGHBY, OHIO.		
MASONRY PLAN - PIER		
Western District	Lake Division	Sheet 6 of 11
Scale: As shown	Dec. 22, 1958	Vol. Sec. 203 File No. 93143