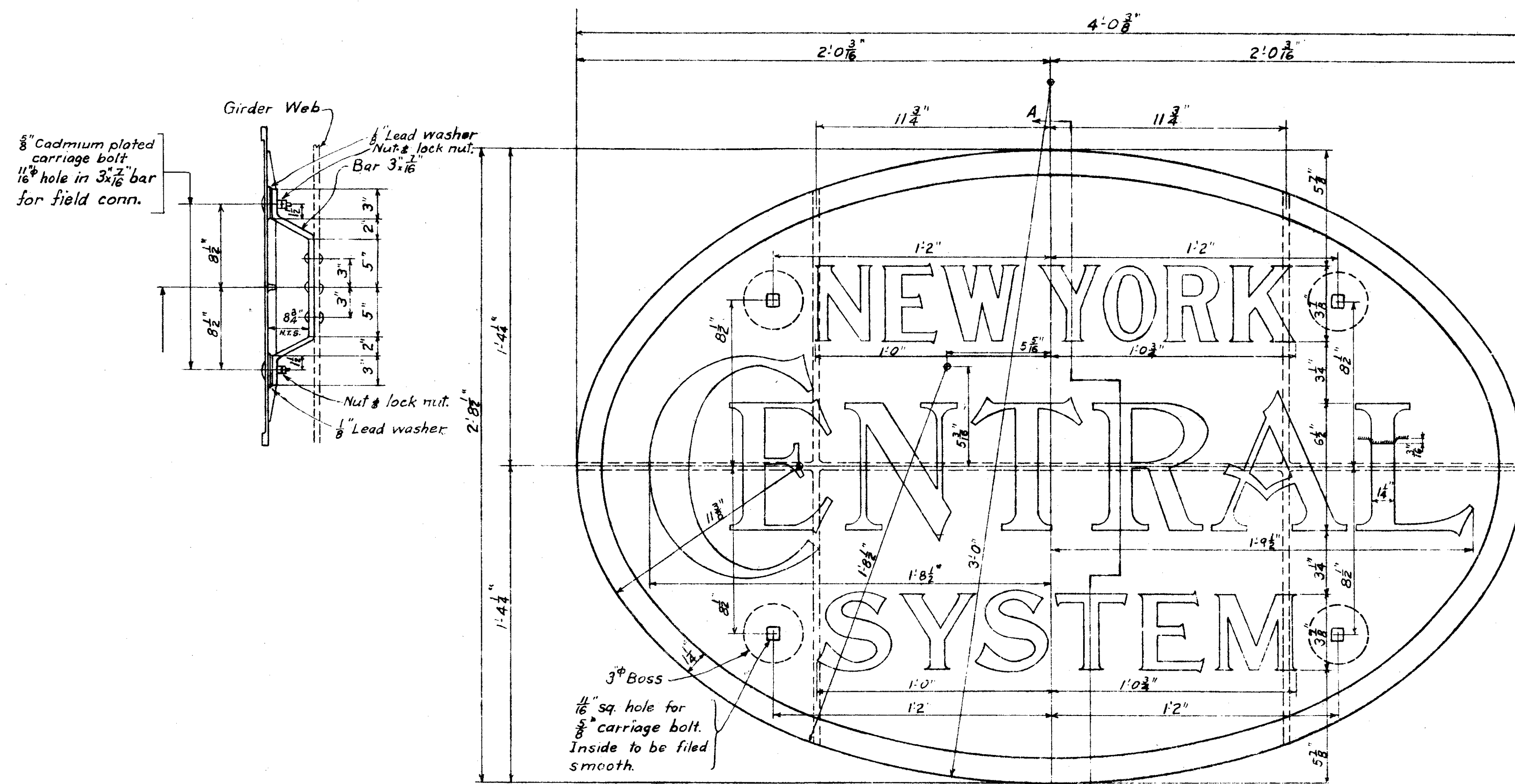
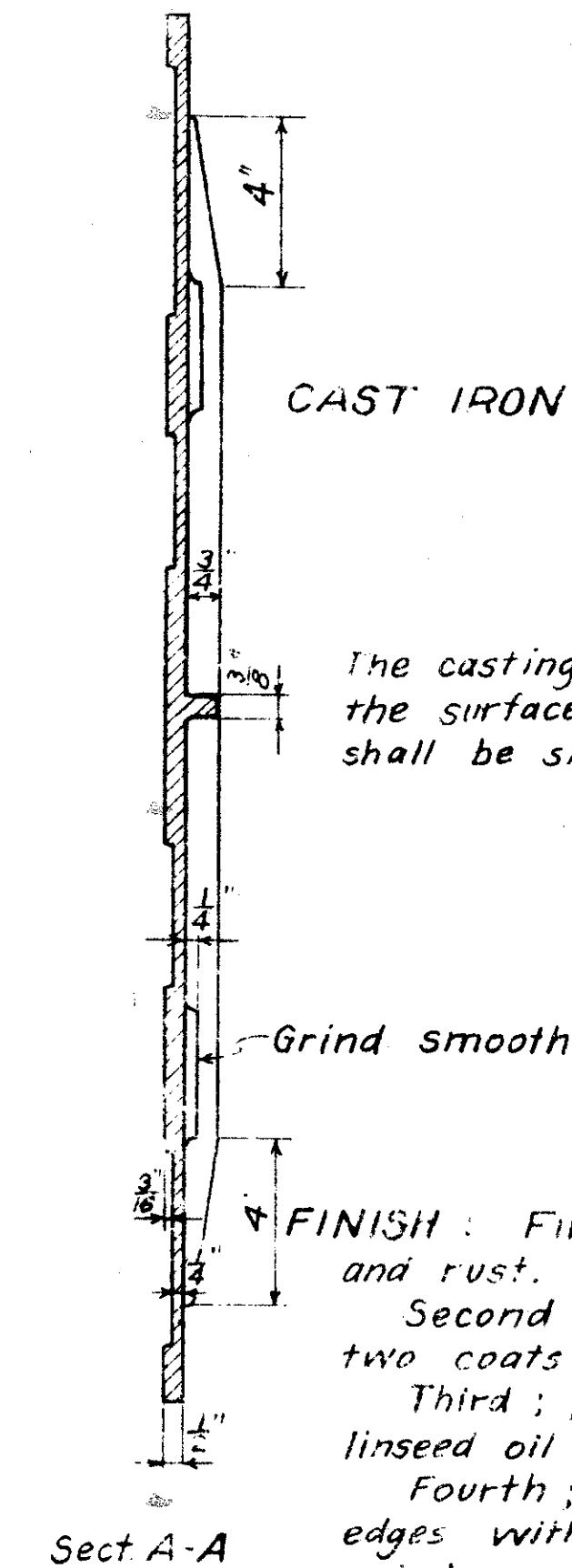


LAKE COUNTY
SEC LAK-2-4.42



Pattern # S.C.14954

DETAIL OF SIGN
Scale 3"=1'-0"



The casting shall be free from pit holes and the surface of the border and of the letters shall be smoothly finished.

Grind smooth

FINISH: First, thoroughly remove all scale and rust.

Second; paint entire casting with two coats of red lead.

Third; paint back with one coat of pure linseed oil carbon black paint.

Fourth; paint letters, border and edges with two coats of white enamel paint.

Fifth; paint face except for letters, border and edges with two coats of black enamel paint, then silt on black smalt.

Approx. weight of one cast iron sign = 104 lbs.
2 - required.

Correct

John L. Beckel
Engineer of Structures

Approved

Geo. C. Robinson
Assistant Chief Engineer
C. S. Spurr
Chief Engineer

| Drawn J.H.Z. | Checked A.C.R. | |
|--------------|----------------|-------------|
| REVISIONS | | |
| Date | By | Description |
| | | |
| | | |
| | | |

Highway Bridge No. LAK-2-0453

N.Y.C. SYSTEM OFFICE OF CHIEF ENGINEER NEW YORK, N.Y.

BRIDGE # 56 1/2 C.E.I.Co. SPUR
GRADE SEPARATION

LAKELAND EXPRESSWAY (S.R. 2)
WILLOUGHBY, OHIO
SIGN PLAN

Western District Lake Division Sheet 5 of 11
Scale: as shown Dec. 22 - 1958 Vol. Sec 203 File No. 93143