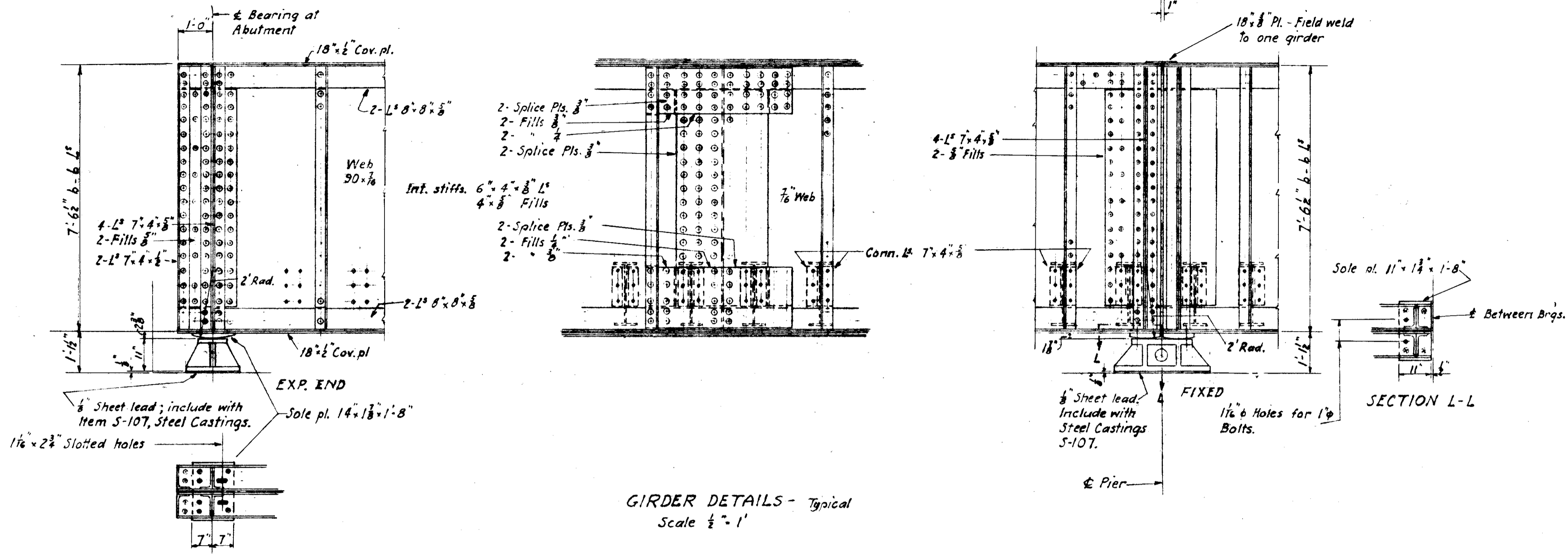


MICROFILMED  
SEP 23 1986

FED. RD. DIVISION	STATE	PROJECT
2	OHIO	

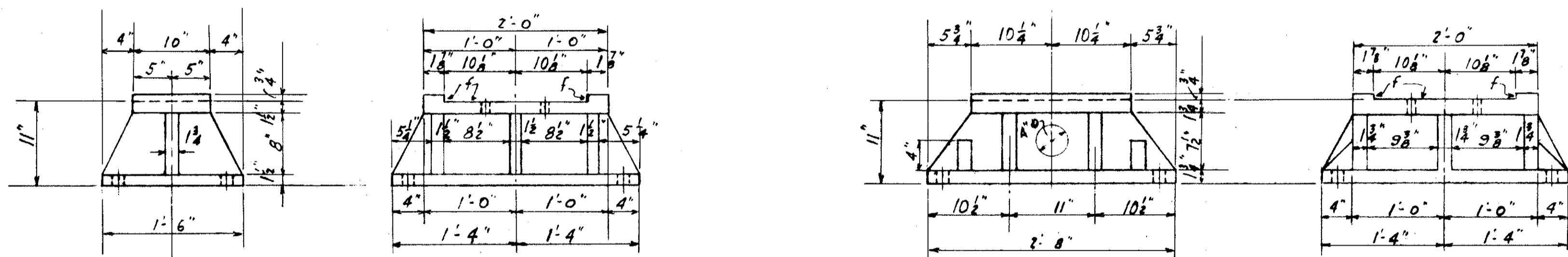
243  
297

LAKE COUNTY  
SEC LAK-2-4.42



ESTIMATED QUANTITIES - SUPERSTRUCTURE

Item	Description	Total
S-103	Membrane Waterproofing Type "a+d"	37 S.Y.
S-103	" " " " Type "d"	309 S.Y.
S-103	Asphalt Mastic, Type "a"	220 S.Y.
S-4	Welded Wire Fabric	1045 S.F.
S-6	Pneumatically placed mortar (Shotcrete)	3290 S.F.
S-107	Structural steel	319000 lbs
S-107	Steel Castings	5400 lbs
S-8	Field painting of Structural Steel	324400 lbs
S-9	Lead Flashing 10" x 7.5" / 1"	10 L.F.
S-9	" " " " 11" x 7.5" / 1"	10 L.F.
S-9	1" Preformed Expansion Joint Filler	30 S.F.
Special	Asphalt Roofing Felt	24 S.Y.



1 1/2" x 6" Cored holes for 1 1/2" Anchor bolts, 12" in mas. (hex. nuts & washers)

1 1/2" x 6" Drilled holes for 1" x 6" Shouldered bolts (hex. nuts & washers)

1 1/2" x 6" Drilled holes for 1" x 6" bolts (hex. nuts)

Note: Fabricator may provide built up welded plate shoes in lieu of cast steel. Alternative design to be submitted in advance for approval.

Note: Fill interior cells with concrete after erection.

ABUTMENT SHOE - Cast Steel  
4-Reqd.

PIER SHOE - Cast Steel  
2-Reqd.

BEARING DETAILS  
Scale: 1" = 1'

Correct

John F. Buchala  
Engineer of Structures

George C. Linsen  
Assistant Chief Engineer

Approved

Chief Engineer

Date	By	Description
4-16-58	J.M.Z.	Quantities Revised

Highway Bridge No. LAK-2-0453

N.Y.C. SYSTEM OFFICE OF CHIEF ENGINEER NEW YORK, N.Y.

BRIDGE # 56 1/2 - C.E. I. Co. SPUR  
GRADE SEPARATION

LAKE COUNTY  
WILLOUGHBY, OHIO  
SUPERSTRUCTURE DETAILS

Western District Lake Division Sheet 4 of 11  
Scale: as shown Dec. 22, 1958 Val Sec 203 File No. 93143