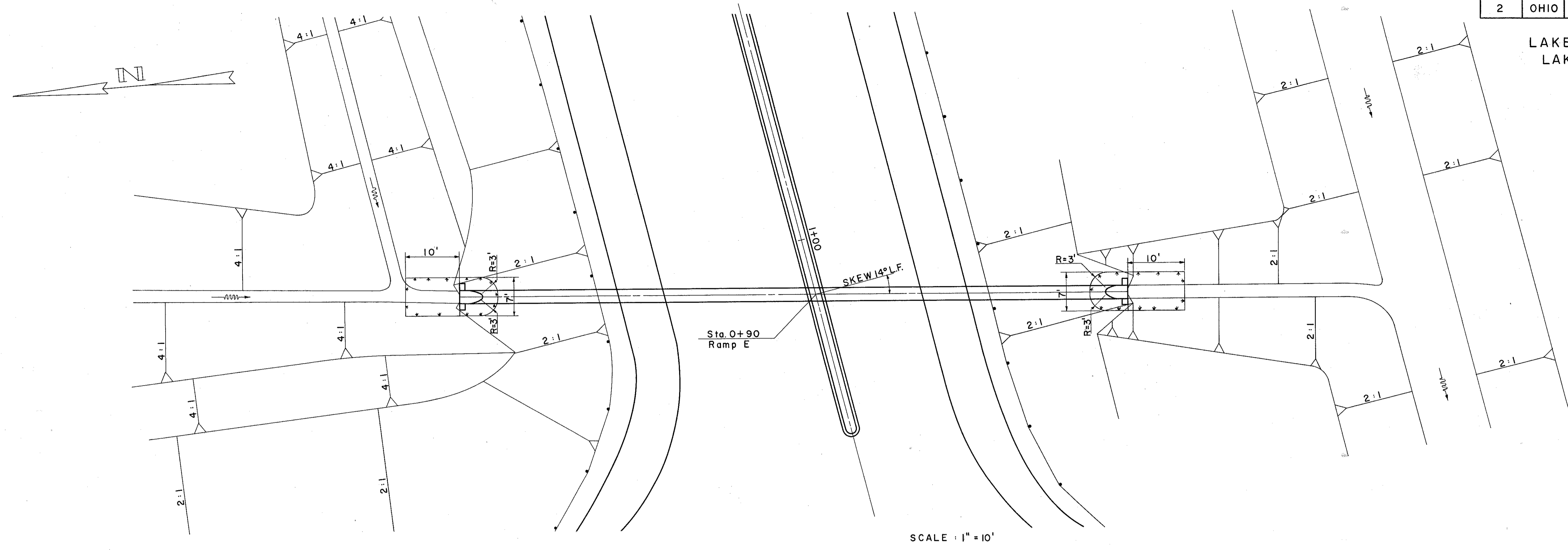
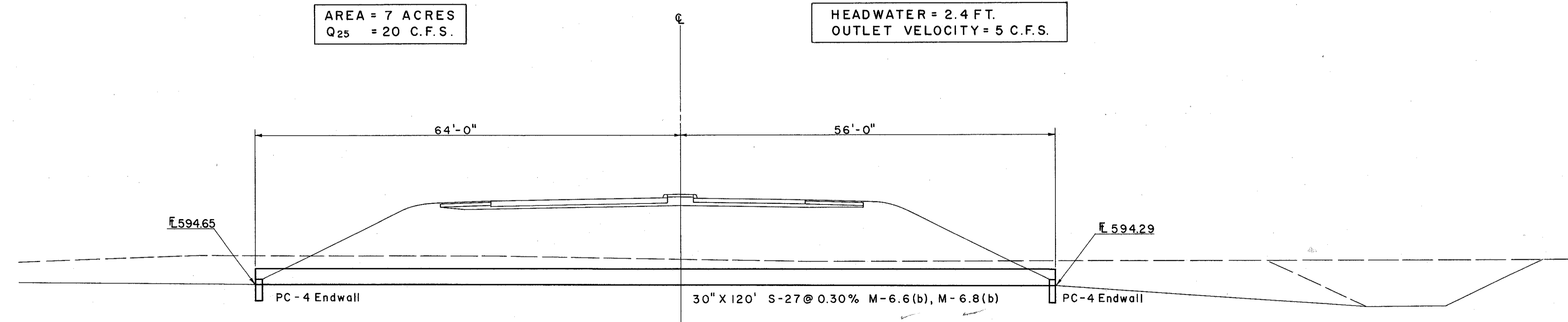


LAKE COUNTY
LAK-2-4.42



AREA = 7 ACRES
Q₂₅ = 20 C.F.S.

HEADWATER = 2.4 FT.
OUTLET VELOCITY = 5 C.F.S.



ESTIMATED QUANTITIES

* E-2	Excavation For Structures	106 C.Y.
E-3	Channel Excavation	103 C.Y.
S-1	Conc. For Structures C.I.E	1.02 C.Y.
S-27	30" Pipe For Roadway Culverts	120 L.F.
L-10	Sodding	16 S.Y.

* Includes E-2 For Headwalls

CULVERT DATA

TYPE: S-27 M-6.6(b), M-6.8(b)
 SIZE: 30" X 120"
 WORK REQ'D: Build a pipe culvert with PC-4 Endwalls,
 Sodding Rt. & Lt. Excavate for Channel
 on Rt. as shown.