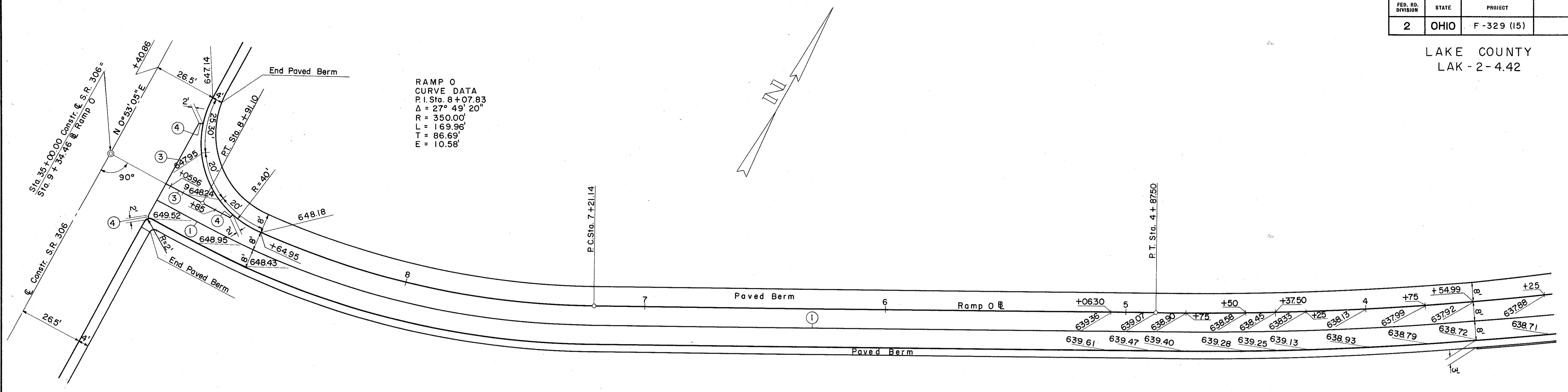


FED. NO. DIVISION	STATE	PROJECT	
2	OHIO	F-329 (15)	

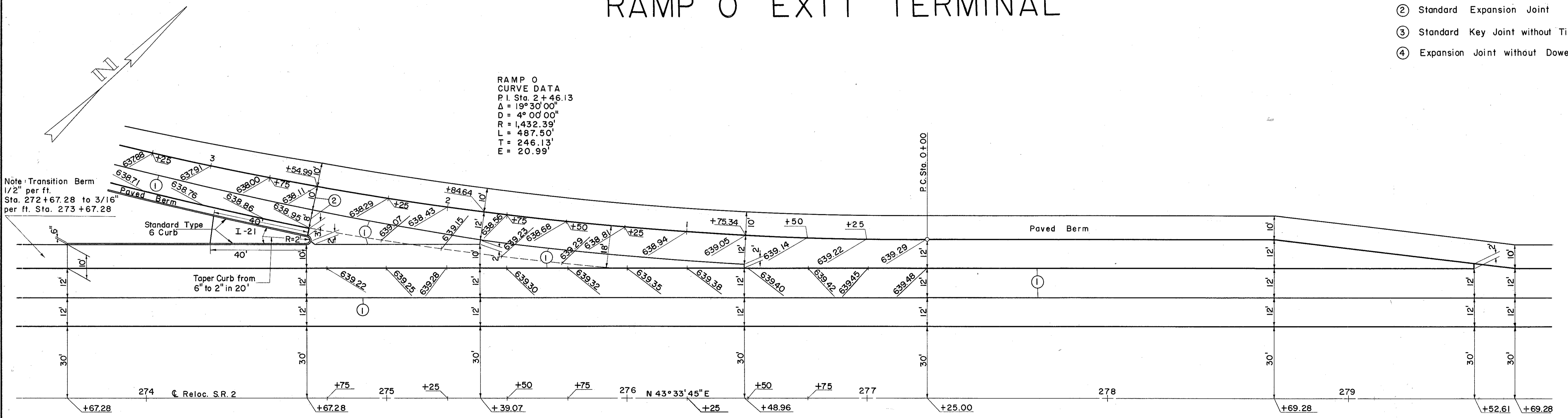
217
297

LAKE COUNTY
LAK-2-4.42



RAMP 0 EXIT TERMINAL

- CONSTRUCTION JOINT LEGEND
- ① Standard Longitudinal Joint
 - ② Standard Expansion Joint
 - ③ Standard Key Joint without Tie Bars
 - ④ Expansion Joint without Dowels



Note: Transition Berm
1/2" per ft.
Sta. 272+67.28 to 3/16"
per ft. Sta. 273+67.28

RAMP 0
CURVE DATA
P.I. Sta. 2+46.13
Δ = 19° 30' 00"
D = 4° 00' 00"
R = 1,432.39'
L = 487.50'
T = 246.13'
E = 20.99'

S. R. 306 INTERCHANGE
RAMP 0
Scale 1" = 20'-0"