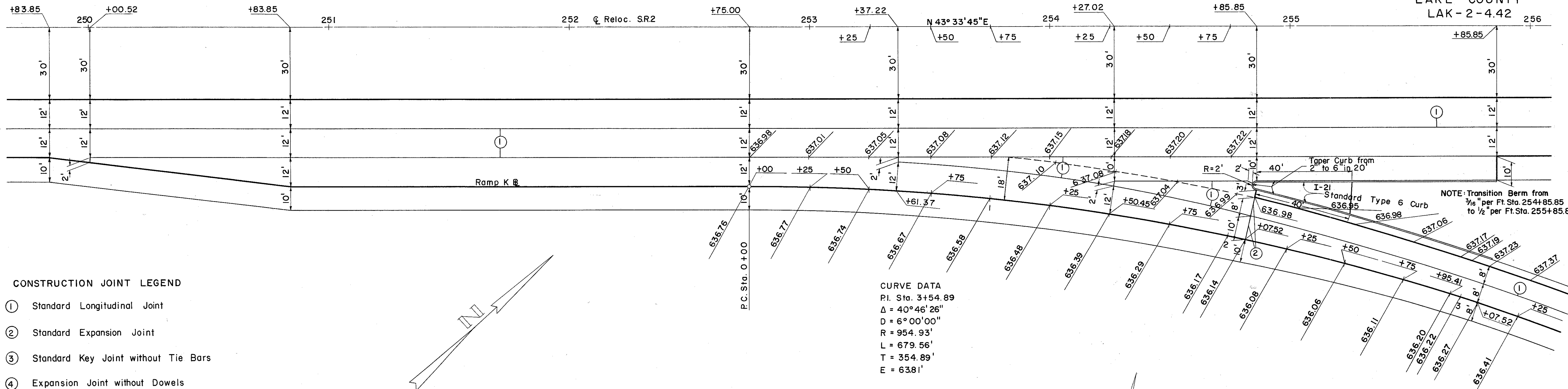


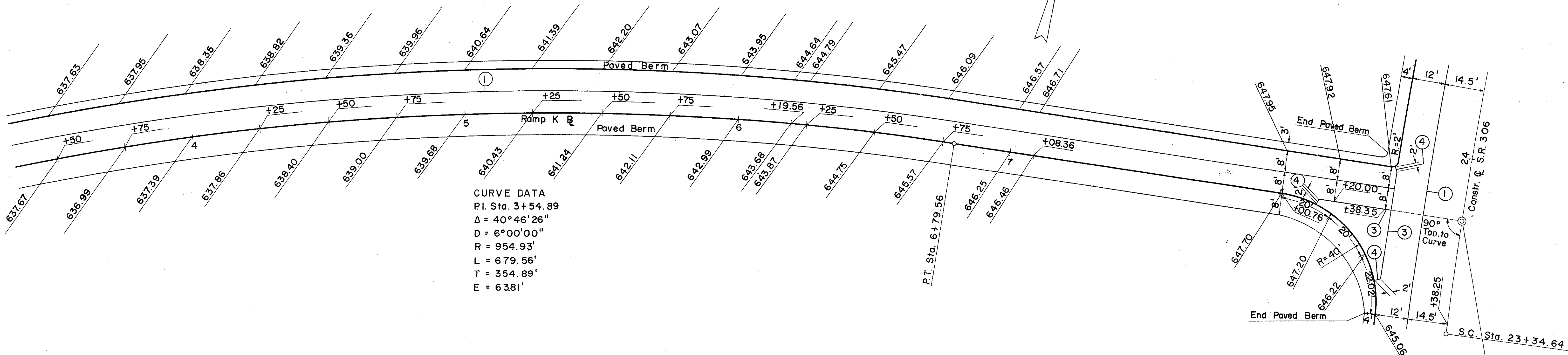
LAKE COUNTY
LAK-2-4.42



CONSTRUCTION JOINT LEGEND

- ① Standard Longitudinal Joint
- ② Standard Expansion Joint
- ③ Standard Key Joint without Tie Bars
- ④ Expansion Joint without Dowels

RAMP K EXIT TERMINAL



Sta. 23+76.91 Constr. C S.R. 306
Sta. 8+66.85 R Ramp K

S. R. 306 INTERCHANGE
RAMP K

Scale 1" = 20'-0"