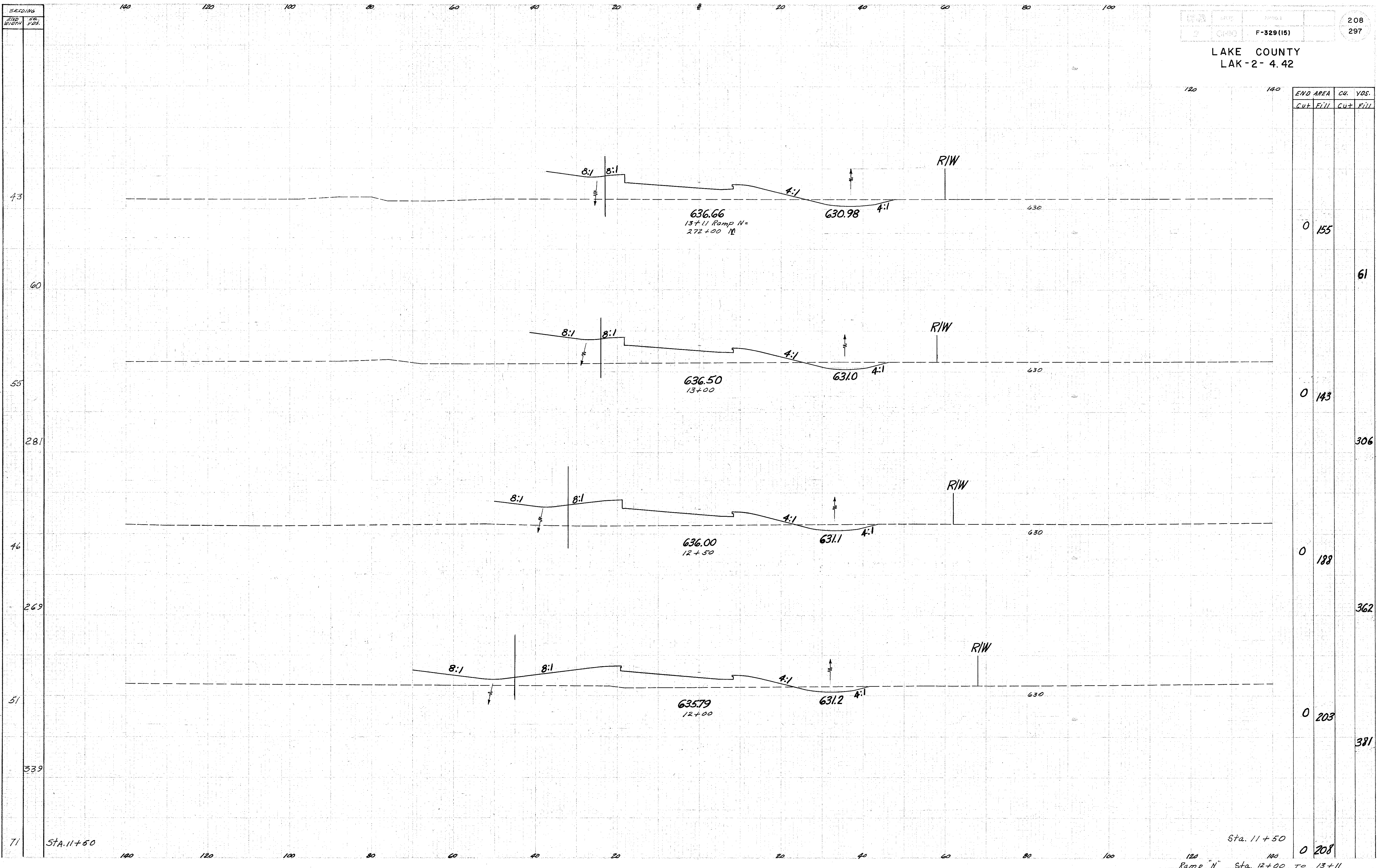


LAKE COUNTY
LAK-2-4.42



END AREA		CU.		VOLS.	
Cut	Fill	Cut	Fill	Cut	Fill
0	155				61
0	143				306
0	188				362
0	203				381
0	208				

Sta. 11+50

Sta. 11+50
Ramp "N" Sta. 12+00 to 13+11