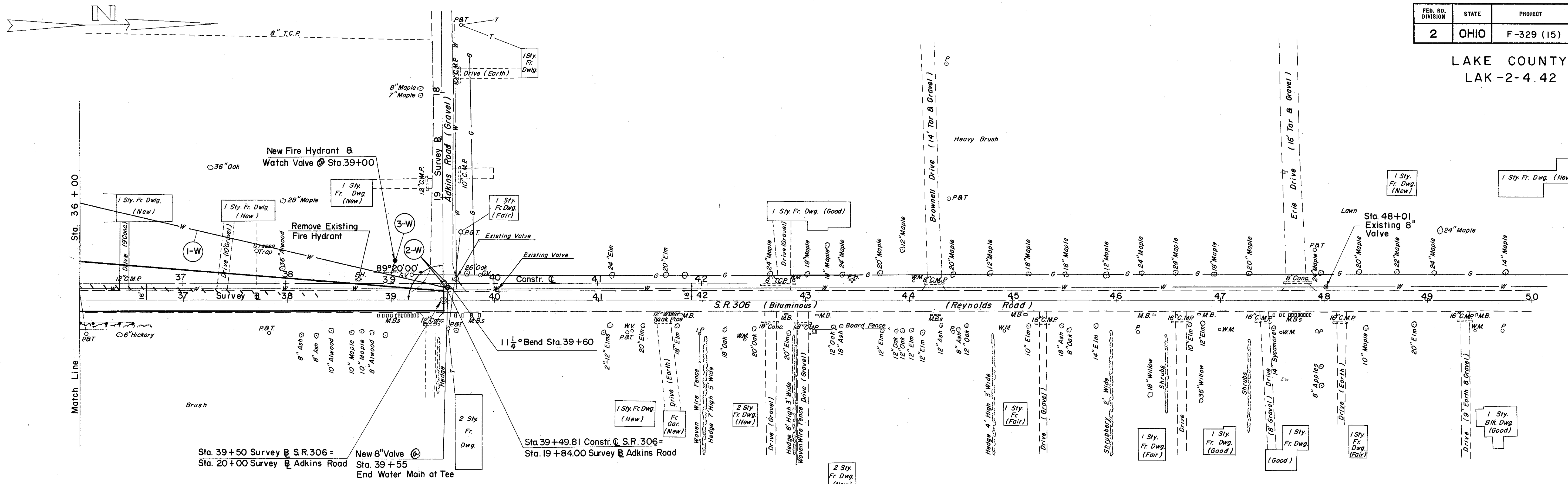
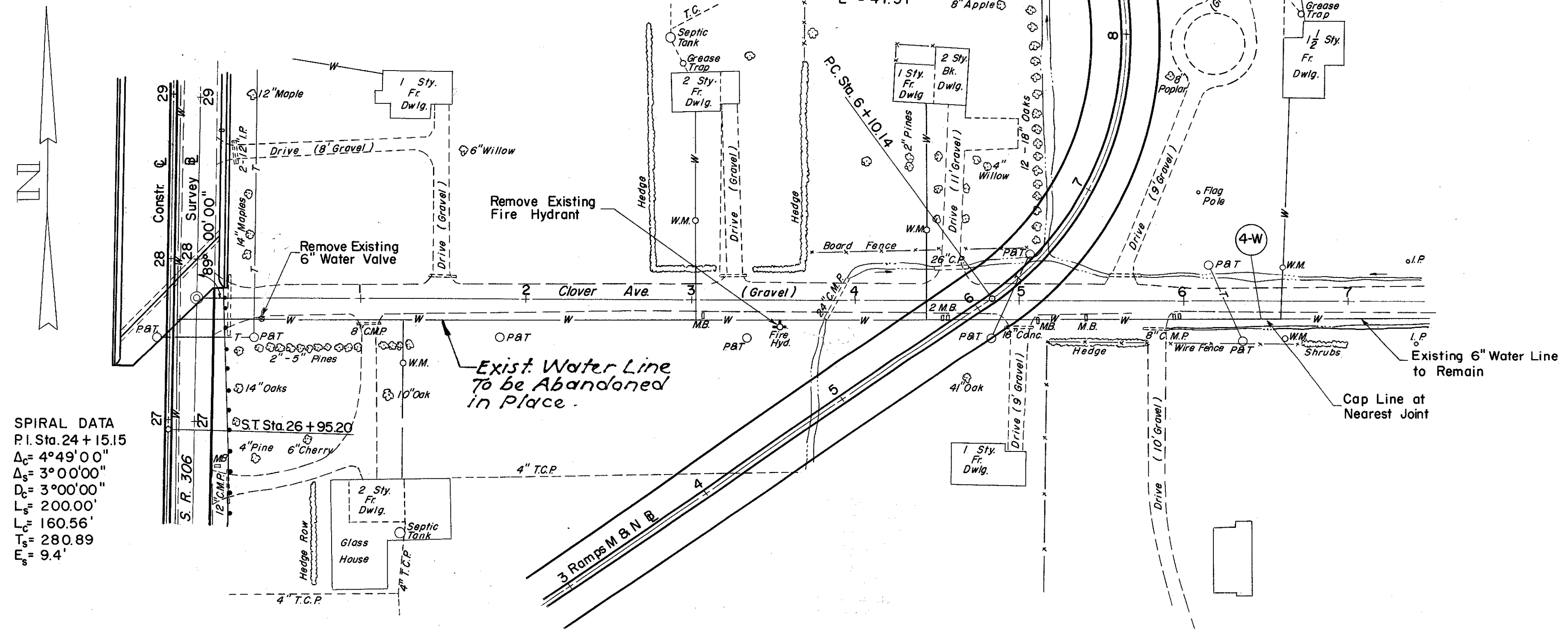


LAKE COUNTY
LAK-2-4.42



RAMPS M & N
CURVE DATA
P.I. Sta. 7 + 54.14
 $\Delta = 72^\circ 45' 00''$
 $R = 195.50'$
 $L = 284.23'$
 $T = 144.00'$
 $E = 47.31'$



SPIRAL DATA
P.I. Sta. 24 + 15.15
 $\Delta_c = 4^\circ 49' 00''$
 $\Delta_s = 3^\circ 0' 00''$
 $D_s = 3^\circ 0' 00''$
 $L_s = 200.00'$
 $L_c = 160.56'$
 $T_s = 280.89'$
 $E_s = 9.4'$

REF. NO.	SIDE	STATION	NEW WATER LINE				
			8" ID CI PIPE CL. 150 MECH. JT.	8" VALVE & BOX	1 1/4" BEND C.I.	CAP 6" TRANSITE OR EQUAL	FIRE HYDRANT & WATCH VALVE
		FROM TO	L.F.	EA.	EA.	EA.	EA.
1-W	LT	36+00 39+62	370				
2-W	RT	39+55 39+60					
3-W	LT	39+00					
4-W	RT	6+60					
TOTAL			370				

WATER MAIN RELOCATION
FOR S.R. 306 & CLOVER AVE.
SCALE: 1" = 50'