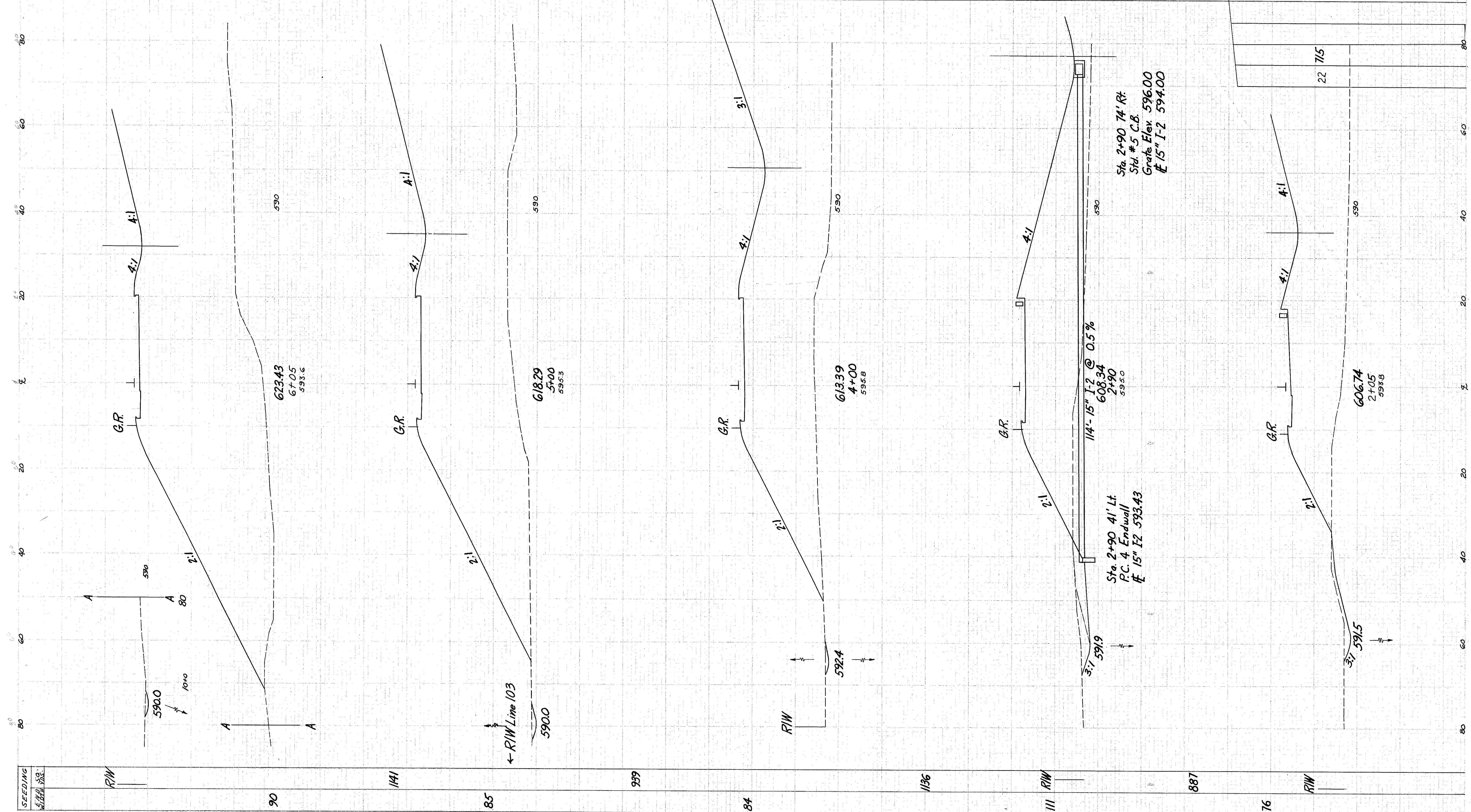


SEEDING WIDTH	CH. YDS.	END PIER	CH. YDS.
90	4	2103	4
85	6	1638	6
84	4	1397	4
111	26	1065	26



Sta. 2+90 74' Rt.  
 Std. #5 C.B.  
 Grate Elev. 596.00  
 # 15" I-2 594.00

Sta. 2+90 41' Lt.  
 P.C. 4 Endwall  
 # 15" I-2 593.43