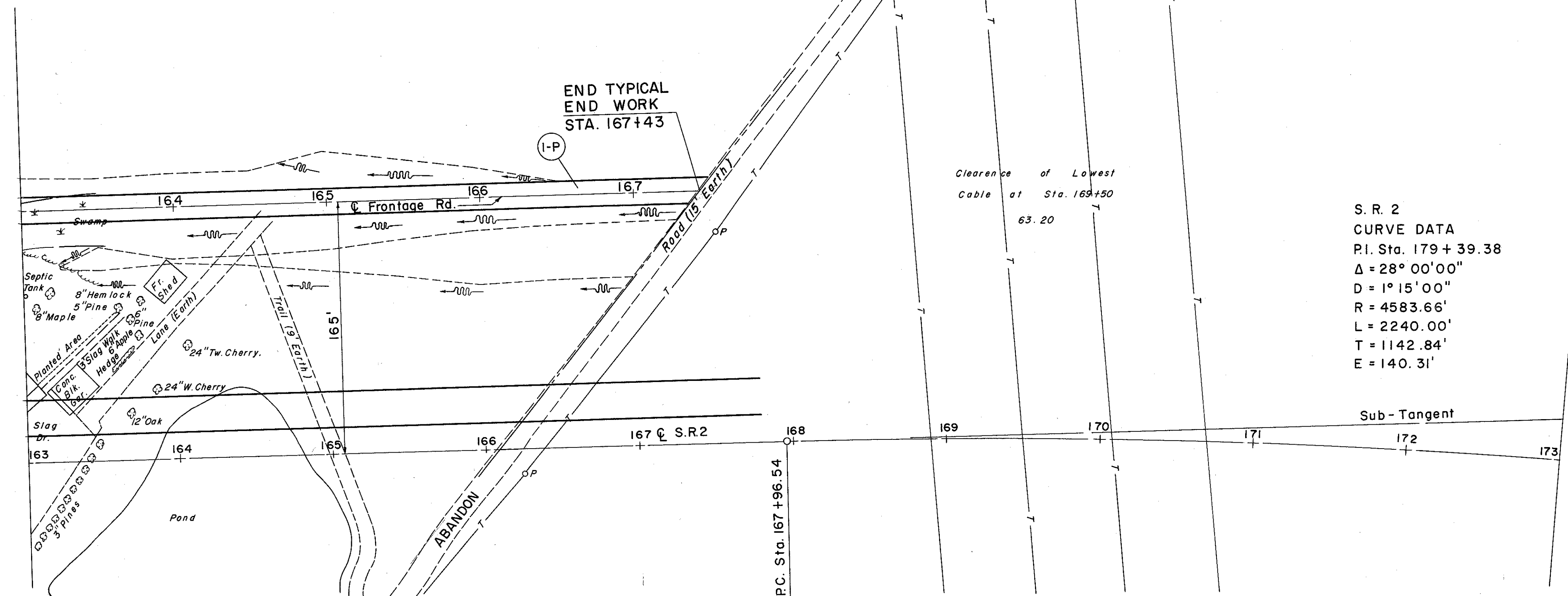
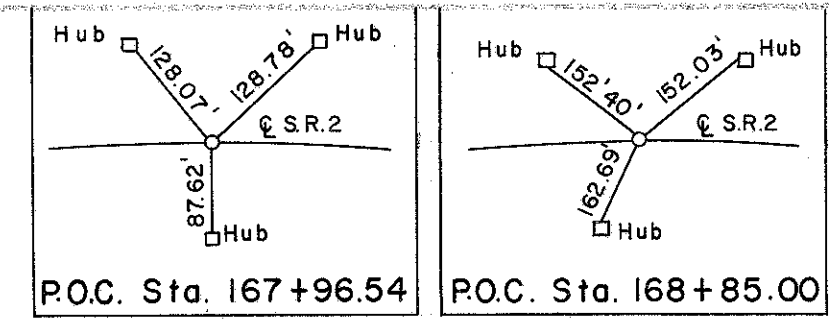


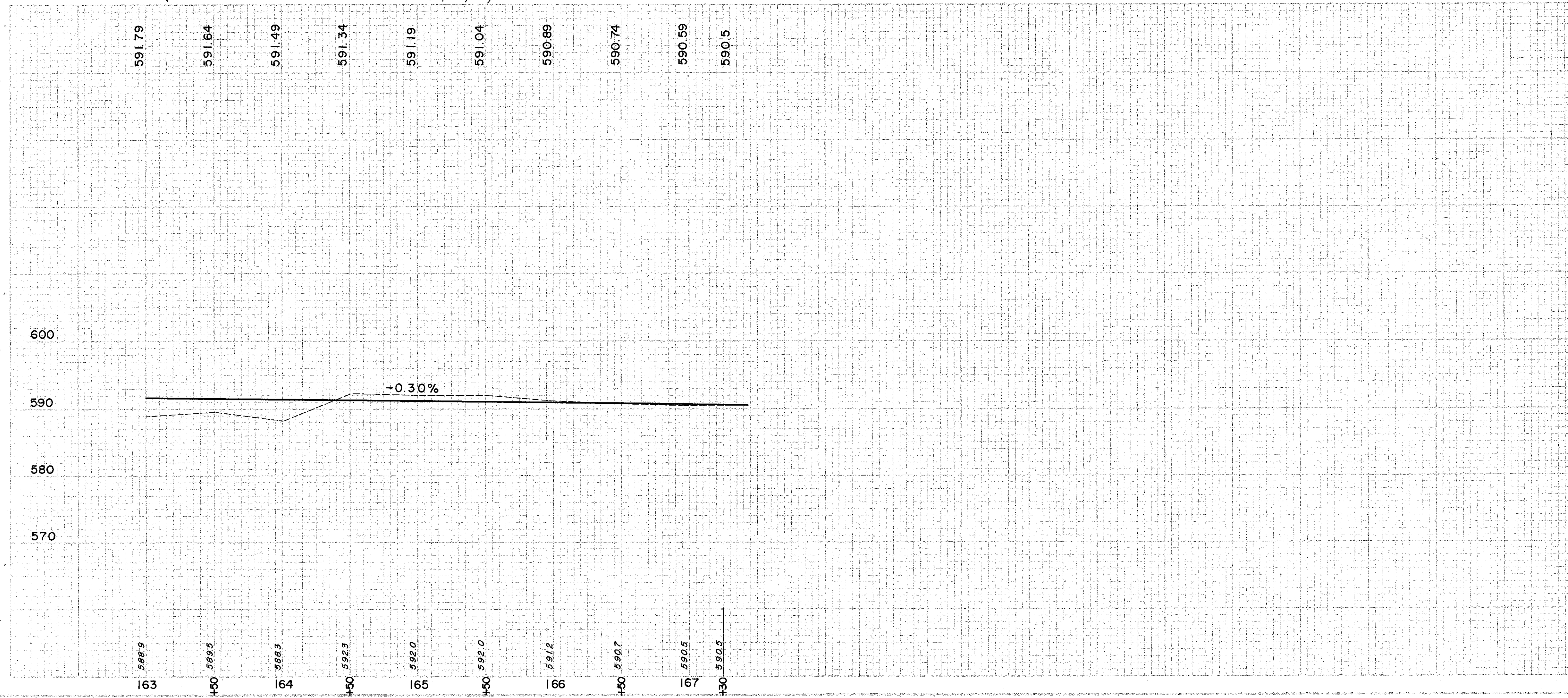
LAKE COUNTY
LAK-2-4.42



Clearance of Lowest
Cable at Sta. 168+50
63.20

S. R. 2
CURVE DATA
P.I. Sta. 179 + 39.38
 $\Delta = 28^\circ 00' 00''$
 $D = 1^\circ 15' 00''$
 $R = 4583.66'$
 $L = 2240.00'$
 $T = 1142.84'$
 $E = 140.31'$

END TYPICAL
END WORK
STA. 167+43



(P) PAVEMENT

REF. STATION NO.	SIDE	B-19 CRUSHED AGGREGATE COURSE	E-1 COMP SUB-GRADE	M-10 CALCIUM CHLORIDE
I-P 163+00	167+43	119	860	0.43

EXCAVATION	=	753 C.Y.
EMBANKMENT	=	424 C.Y.
EMBANKMENT +20'	=	509 C.Y.