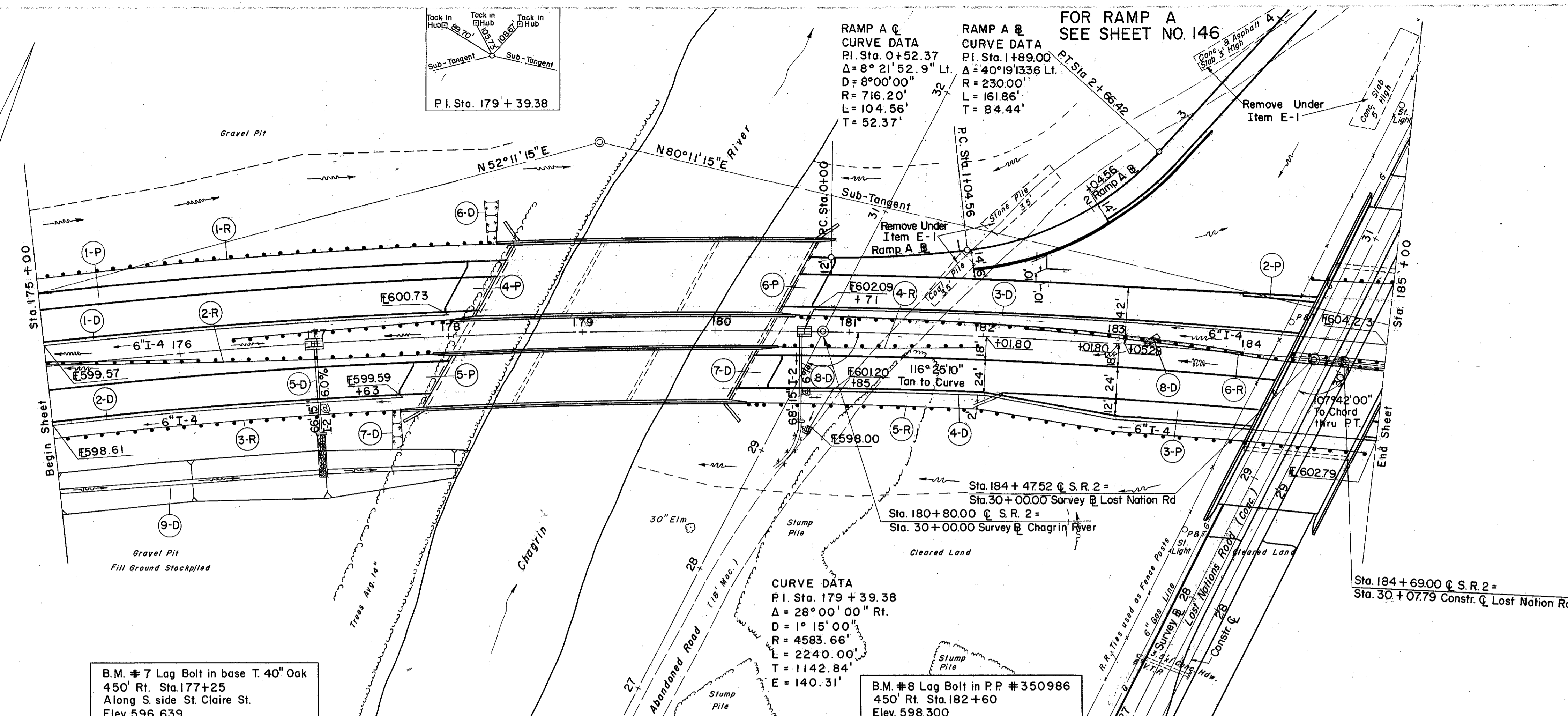


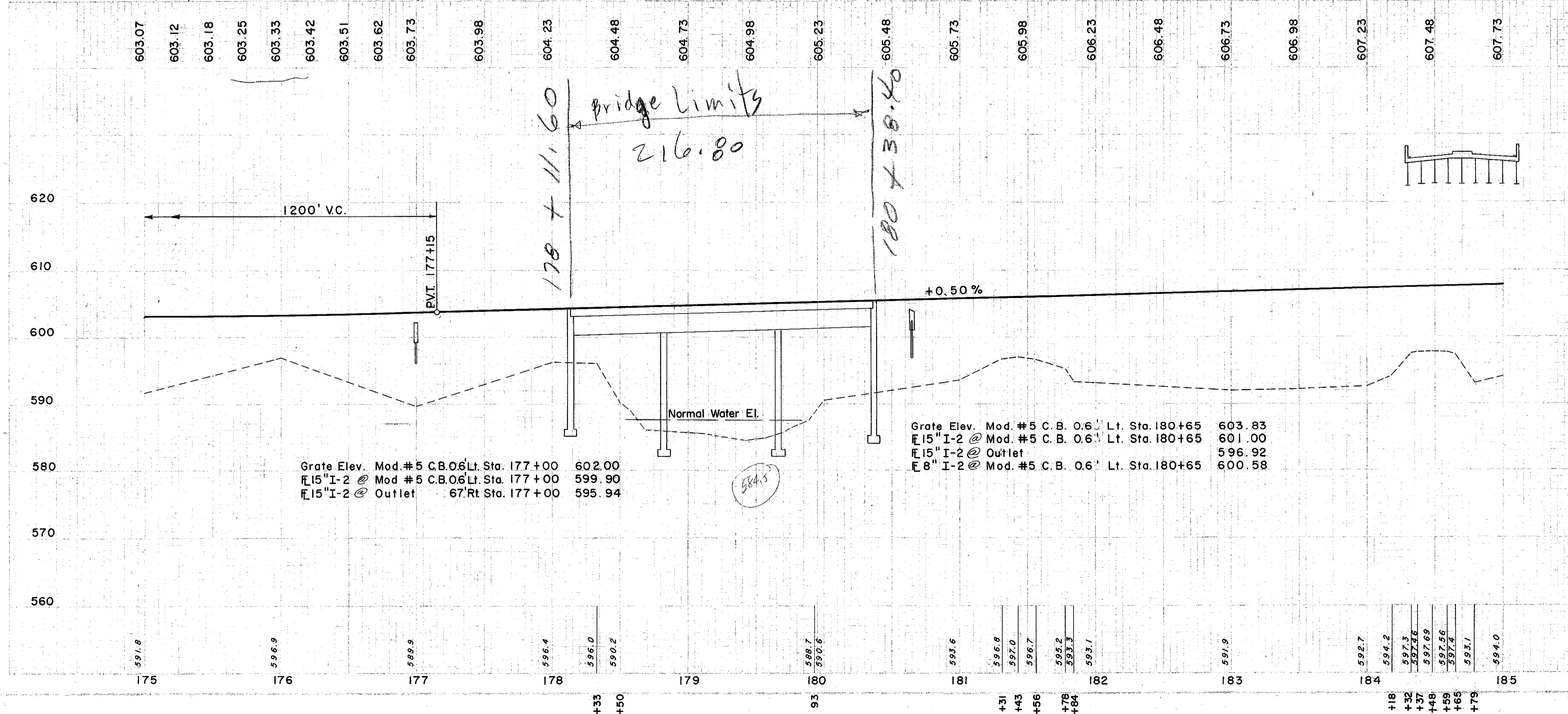
MICROFILMED
SEP 23 1986

LAKE COUNTY
LAK-2-4.42



B.M. #7 Lag Bolt in base T. 40" Oak
450' Rt. Sta. 177+25
Along S. side St. Claire St.
Elev. 596.639

B.M. #8 Lag Bolt in P.P. #350986
450' Rt. Sta. 182+60
Elev. 598.300



(D) DRAINAGE

REF. STATION NO.	FROM	TO	SIDE	I-2 CL. B. STORM SEWER UNDER PAVT.	I-4 6" PIPE UNDER DRAIN SEC. SHALLOW - 6.4(0)	I-4 8" OUTLET PIPE	I-5 6" 60° BEND	I-5 6" 60° WYE	I-5 MOD. #5 CATCH BASIN	I-8 SODDING FOR SP REINFORC. STEEL	L-10 CONC. STRUCT. CL. 'C'	S-1 CONC. STRUCT. CL. 'C'	S-4 REINFORC. STEEL	L-10 SODDING FOR SP REINFORC. STEEL	E-2 EXC. FOR STRUCT. PROTECT.	E-2 EXC. FOR STRUCT. PROTECT.	I-10 DUMPED ROCK CHANNEL	I-10 S-29 CHANNEL STRUCT. EXC.	I-7 REINFORC. CONC. SLAB	
1-D 175+00	175+00	178+00	LT.																	
2-D 175+00	175+00	177+00	LT.																	
3-D 180+71	180+71	185+00	LT.																	
4-D 180+85	180+85	185+00	RT.																	
5-D 177+00	177+00	178+00	LT.																	
6-D 177+36	177+36	178+00	RT.																	
7-D 177+60	177+60	178+00	RT.																	
8-D 180+65	180+65	181+00	RT.																	
9-D 175+00	175+00	178+27	RT.																	
TOTALS																				182.2

(R) ROADWAY

REF. STATION NO.	FROM	TO	SIDE	I-15 GUARD RAIL	I-15 STEEL BEAM	I-15 RAIL STEEL BEAM	I-15 TYPE	I-15 DEEP	I-15 NO. 2/A	I-15 NO. 2/A	I-15 L.F.	I-15 L.F.	
1-R 175+00	175+00	178+45.5	LT.										
2-R 175+00	175+00	178+00	RT.										
3-R 180+46	180+46	181+96	RT.										
4-R 180+46	180+46	181+94	RT.										
5-R 180+24	180+24	181+94	RT.										
6-R 180+60	180+60	185+00	RT.										
TOTALS												1875	275

(P) PAVEMENT

REF. STATION NO.	FROM	TO	SIDE	I-7 REINFORC. CONC. SLAB	I-7 SUB. BASE	I-7 CONC. BASE	I-7 SY	I-7 SY	I-7 SY	I-7 SY	I-7 SY	I-7 SY	I-7 SY	I-7 SY	I-7 SY	I-7 SY	I-7 SY	I-7 SY	I-7 SY	I-7 SY			
1-P 175+00	175+00	178+15	LT.																				
2-P 175+00	175+00	178+15	RT.																				
3-P 180+46	180+46	181+96	RT.																				
4-P 180+46	180+46	181+94	RT.																				
5-P 180+24	180+24	181+94	RT.																				
6-P 180+60	180+60	185+00	RT.																				
TOTALS																				918	153	918	334

EXCAVATION = 2,107 C.Y.
EMBANKMENT = 56,833 C.Y.
EMBANKMENT +20 = 68,200 C.Y.