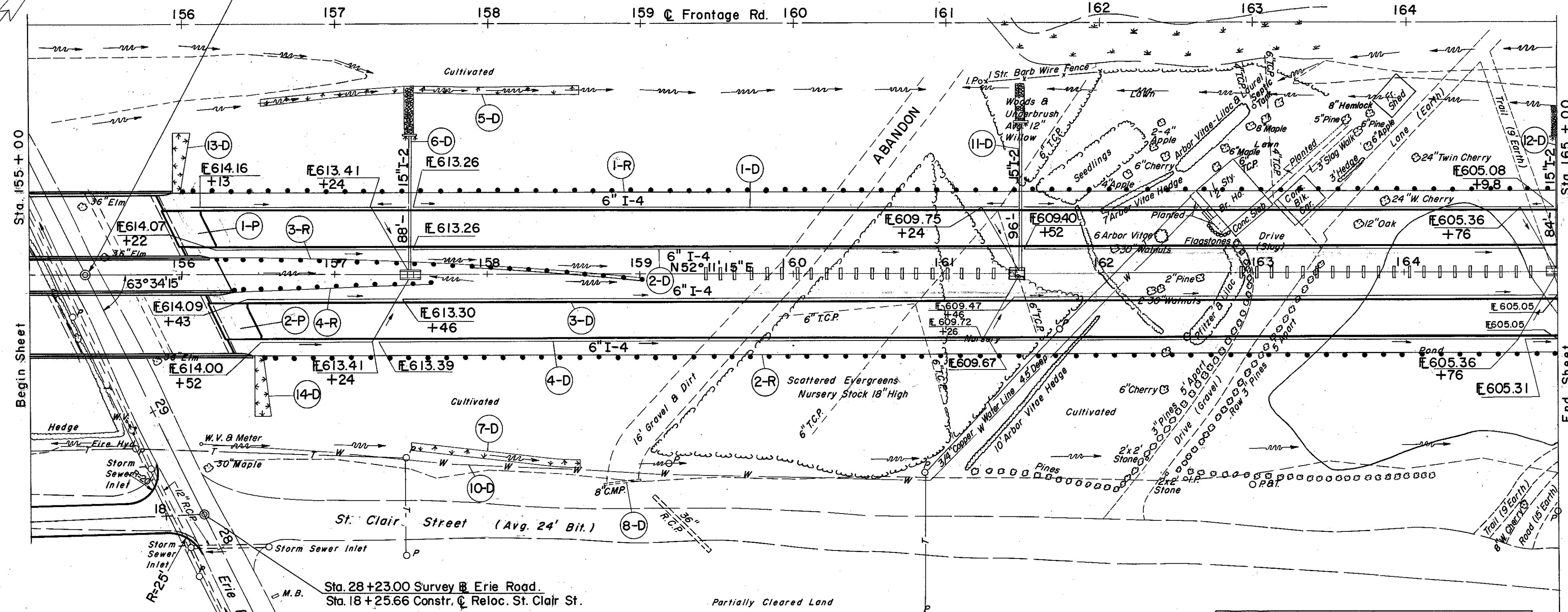
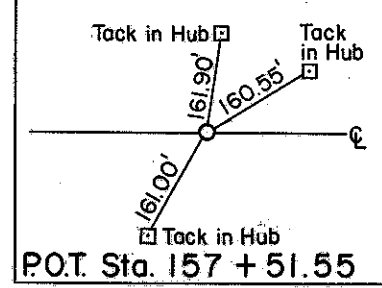


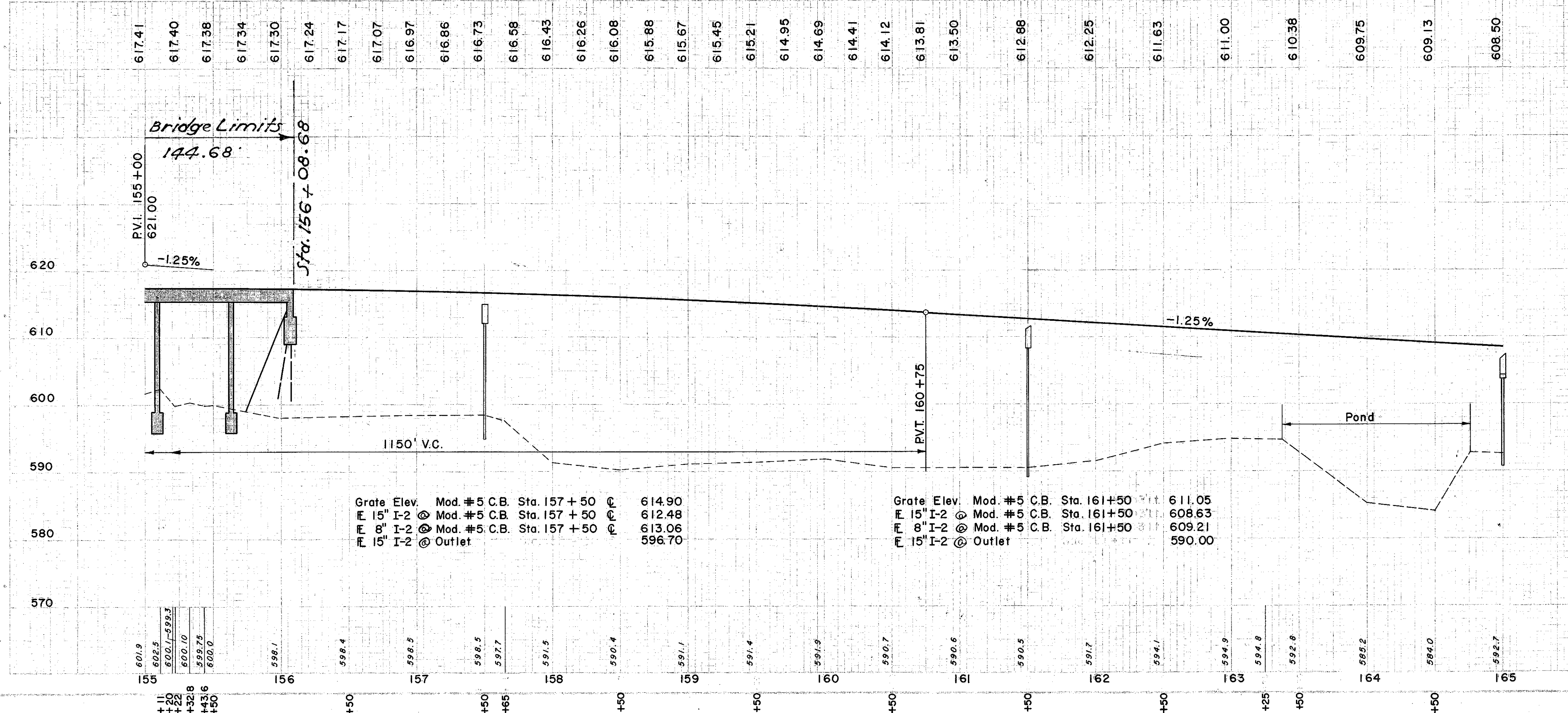
MICROFILMED
SEP 23 1986

Sta. 155+36.34 @ S.R. 2 =
Sta. 30+00.00 Survey @ Erie Road



B.M. #5 Lag Bolt in root 36" Maple
275' Rt. Sta. 156+55
Elev. 599.725

B.M. #6 Lag Bolt in base guy pole #593091
175' Rt. Sta. 164+70
Along E. side St. Claire St.
Elev. 595.041



Grate Elev. Mod. #5 C.B. Sta. 157+50 @ 614.90
 15" I-2 @ Mod. #5 C.B. Sta. 157+50 @ 612.48
 6" I-2 @ Mod. #5 C.B. Sta. 157+50 @ 613.06
 15" I-2 @ Outlet 596.70

Grate Elev. Mod. #5 C.B. Sta. 161+50 @ 611.05
 15" I-2 @ Mod. #5 C.B. Sta. 161+50 @ 608.63
 8" I-2 @ Mod. #5 C.B. Sta. 161+50 @ 609.21
 15" I-2 @ Outlet 590.00

(D) DRAINAGE

REF. STATION NO.	SIDE	FROM TO	E-2 EXC. FOR STRUCT. C.Y.		E-12 PIPE REMOVAL UNDER	E-14 6" PIPE UNDER DRAIN	E-5 6" X 8" INCR. WYE	E-8 MOD. 26" BEND	E-10 DUMPED ROCK CHANNEL PROTECT.	L-10 CONC. STRUCT. CL. V.	S-1 CONC. REINFORC. STRUCT. CL. V.	S-4 REINFORC. SPECIAL BERM & SLOPE	L-10 SPECIAL BERM & SLOPE	
			EXC.	STR.										DEPTH
I-D	LT	155+96	165+00	6	24	891	3	1	18	153	3.1	146	36	
2-D	RT	156+13	165+00	7	24	860	3	1	15	29	3.1	146	36	
3-D	RT	156+26	165+00	8	24	959	3	1	11	29	3.1	146	36	
4-D	RT	156+43	165+00	6	24	842	3	1	11	29	3.1	146	36	
5-D	LT	156+50	158+60	6	24	891	3	1	18	153	3.1	146	36	
6-D	LT	157+50	158+60	7	24	860	3	1	15	29	3.1	146	36	
7-D	RT	157+50	158+60	8	24	959	3	1	11	29	3.1	146	36	
8-D	RT	158+76	159+00	6	24	842	3	1	11	29	3.1	146	36	
I-D	LT	161+50		7	24	891	3	1	18	153	3.1	146	36	
2-D	LT	161+50		8	24	860	3	1	15	29	3.1	146	36	
3-D	LT	158+98		6	24	842	3	1	11	29	3.1	146	36	
4-D	RT	156+40		6	24	842	3	1	11	29	3.1	146	36	
TOTAL													2062.5	112.5

(R) ROADWAY

REF. STATION NO.	FROM TO	DEPTH	WIDTH	LENGTH	S.Y.
1-R	155+94	164+94	15"	900.0	112.5
2-R	156+48	164+98	26"	850.0	112.5
3-R	156+15	159+02	15"	175.0	112.5
4-R	156+27	157+64	27"	137.5	112.5
TOTAL					2062.5

(P) PAVEMENT

REF. STATION NO.	FROM TO	DEPTH	WIDTH	LENGTH	S.Y.
1-P	155+93.77	156+87.77	6"	67	67
2-P	156+23.59	156+49.59	6"	67	67

EXCAVATION = 2,721 C.Y.
 EMBANKMENT = 107,746 C.Y.
 EMBANKMENT + 20" = 129,295 C.Y.