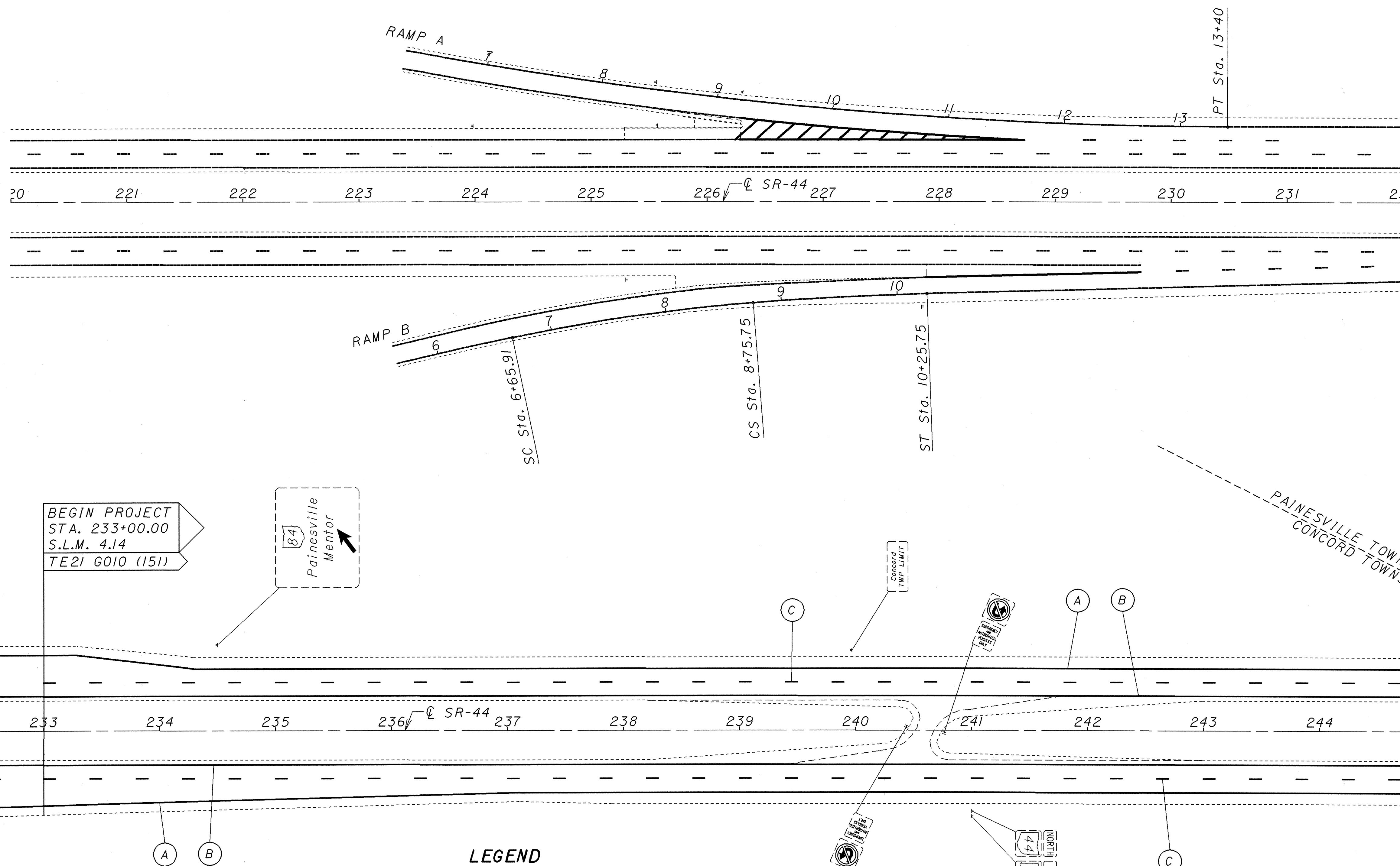


PLOTTED FROM: I:\PROJECTS\Pad18391\dgn\18391tpa.dgn

MATCH LINE STA. 232+00  
SEE ABOVE



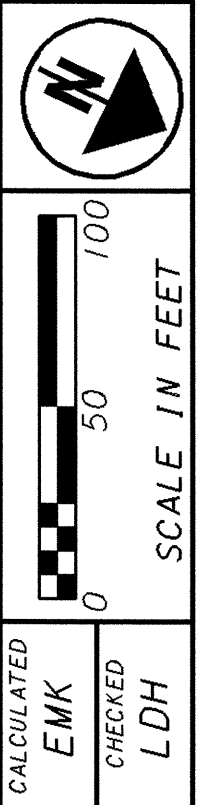
MATCH LINE STA. 232+00  
SEE BELOW

MATCH LINE STA. 246+00  
SEE SHEET 69

- LEGEND**
- (A) EDGE LINE (WHITE)
  - (B) EDGE LINE (YELLOW)
  - (C) LANE LINE
  - (D) CHANNELIZING LINE
  - (E) STOP LINE
  - (F) CROSSWALK LINE
  - (G) TRANSVERSE LINE (WHITE), 12' c/c
  - (H) LANE ARROW
  - (I) WORD "ONLY" ON PAVEMENT
  - (J) CROSSWALK LINE

- EXISTING SIGN (NO WORK)
- EXISTING SIGN REMOVED
- EXISTING SIGN REMOVE AND RE-ERECT
- PROPOSED SIGN WITH EXISTING LEGEND
- PROPOSED SIGN

CROSS REFERENCE	
ITEM	SHEET
PLAN SHEET	33
PAVEMENT MARKING	
SUB-SUMMARY	64,65



TRAFFIC CONTROL PLAN SHEET - S.R. 44  
STA. 220+00 TO STA. 246+00

LAKE COUNTY  
LAK-2 / 44-13.05 / 4.14

68  
93

CALCULATED  
EMK  
CHECKED  
LDH