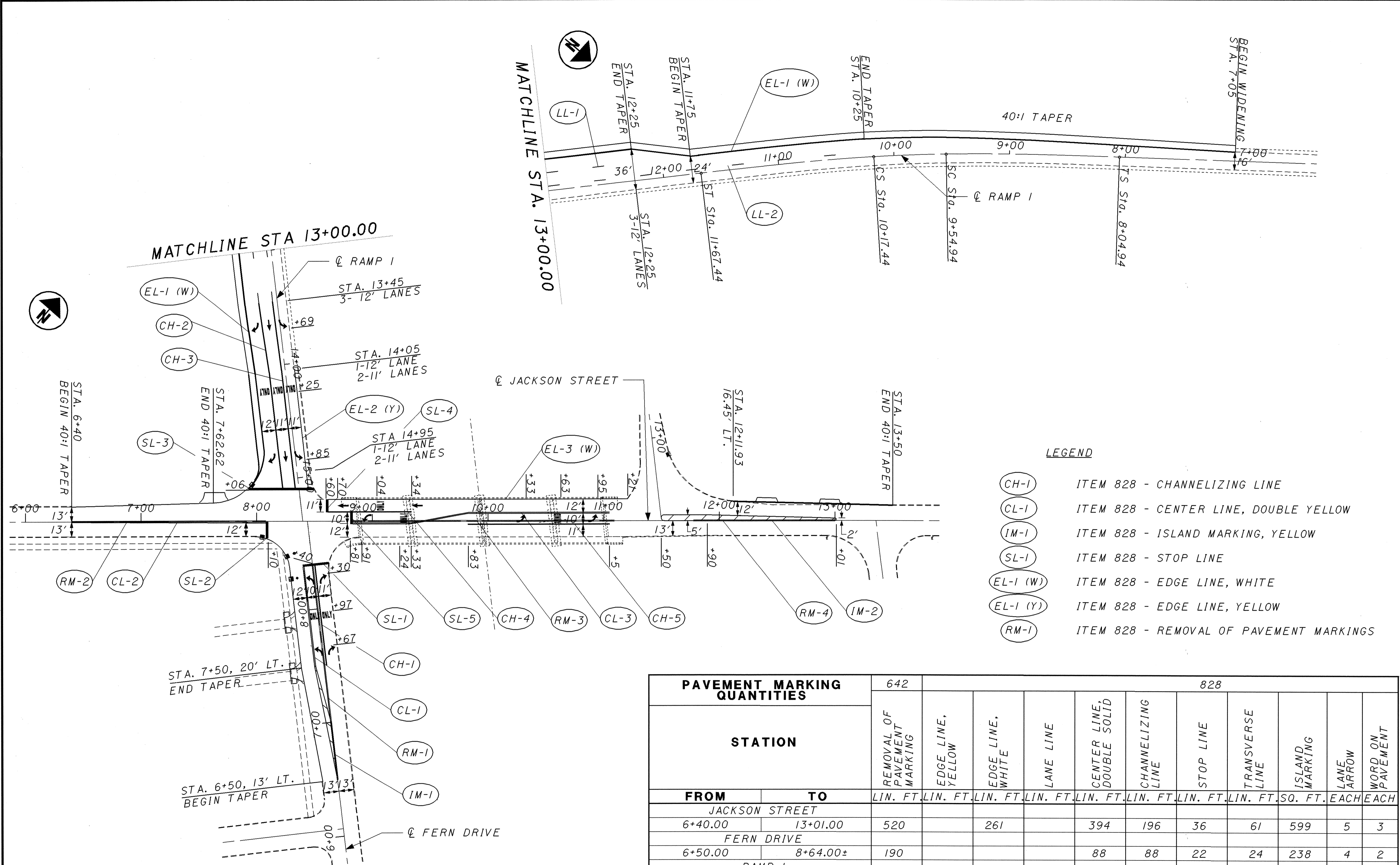


CALCULATED
CHECKED

PAVEMENT MARKING PLAN

LAKE COUNTY
LAK-2/44-13.05/4.14

50P
93



LEGEND

- (CH-1) ITEM 828 - CHANNELIZING LINE
- (CL-1) ITEM 828 - CENTER LINE, DOUBLE YELLOW
- (IM-1) ITEM 828 - ISLAND MARKING, YELLOW
- (SL-1) ITEM 828 - STOP LINE
- (EL-1 (W)) ITEM 828 - EDGE LINE, WHITE
- (EL-1 (Y)) ITEM 828 - EDGE LINE, YELLOW
- (RM-1) ITEM 828 - REMOVAL OF PAVEMENT MARKINGS

| PAVEMENT MARKING QUANTITIES | | 828 | | | | | | | | | | |
|-----------------------------------|----|-----------------------------|-------------------|------------------|-----------|---------------------------|-------------------|-----------|-----------------|----------------|------------|------------------|
| STATION | | REMOVAL OF PAVEMENT MARKING | EDGE LINE, YELLOW | EDGE LINE, WHITE | LANE LINE | CENTER LINE, DOUBLE SOLID | CHANNELIZING LINE | STOP LINE | TRANSVERSE LINE | ISLAND MARKING | LANE ARROW | WORD ON PAVEMENT |
| FROM | TO | LIN. FT. | LIN. FT. | LIN. FT. | LIN. FT. | LIN. FT. | LIN. FT. | LIN. FT. | LIN. FT. | SQ. FT. | EACH | EACH |
| JACKSON STREET | | | | 261 | | 394 | 196 | 36 | 61 | 599 | 5 | 3 |
| FERN DRIVE | | | | | | 88 | 88 | 22 | 24 | 238 | 4 | 2 |
| RAMP 1 | | | 105 | 807 | 440 | | 325 | 56 | | | 6 | 3 |
| SUB-TOTALS | | 710 | 105 | 1068 | 440 | 482 | 609 | 114 | 85 | 837 | 15 | 8 |
| TOTALS CARRIED TO GENERAL SUMMARY | | 710 | 0.02 MI. | 0.20 MI. | 0.08 MI. | 0.09 MI. | 609 | 114 | 85 | 837 | 15 | 8 |

I:\PROJECTS\PI\1839\B&N\PLANS\21365\TP.DGN 14-AUG-2001 10:00PM fkonopka