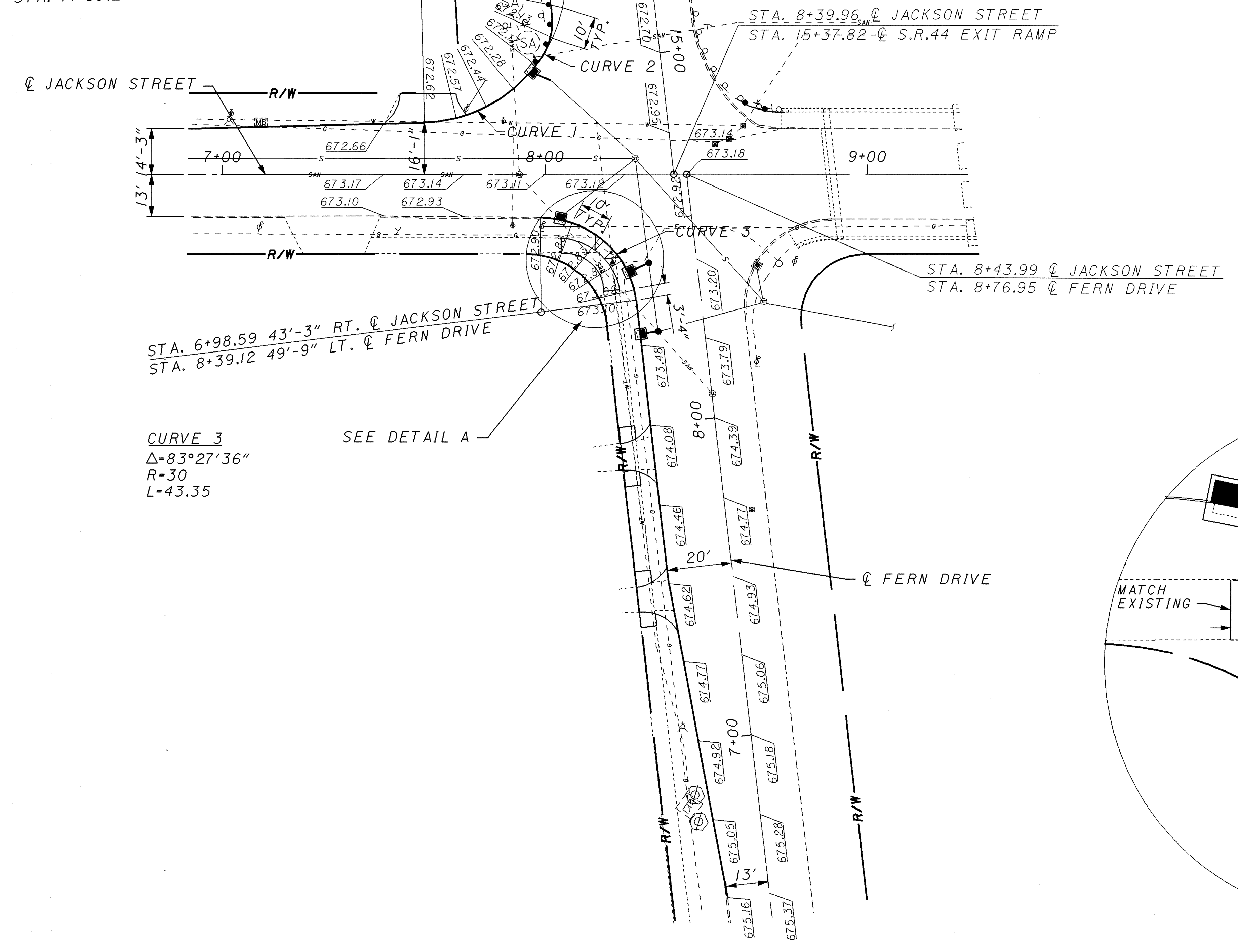


CURVE 1  
 $\Delta=54^{\circ}34'25''$   
 R=45  
 L=42.86

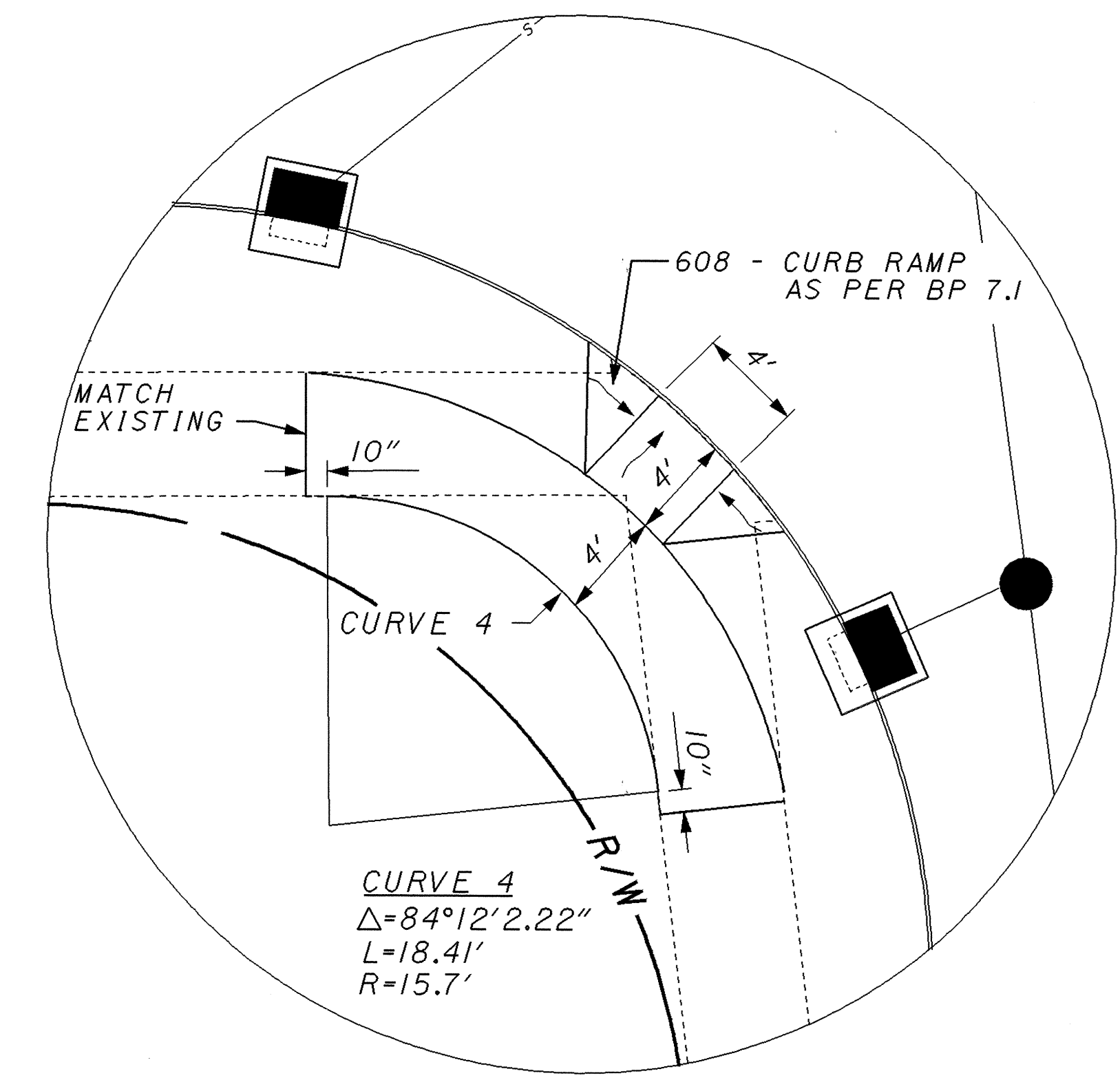
CURVE 2  
 $\Delta=40^{\circ}32'09''$   
 R=20  
 L=14.15

STA. 7+61.49 61.05' LT.  $\phi$  JACKSON STREET  
 STA. 14+68.23 71' RT.  $\phi$  S.R.44 EXIT RAMP



CURVE 3  
 $\Delta=83^{\circ}27'36''$   
 R=30  
 L=43.35

SEE DETAIL A



DETAIL A

JACKSON STREET - FERN DRIVE - S.R.44 EXIT RAMP INTERSECTION

I:\PROJECTS\PI\1839\B&N\PLANS\215656.dgn 14-AUG-2001 12:57PM fkonopka

0 10  
 HORIZONTAL SCALE IN FEET  
 CALCULATED  
 CHECKED

INTERSECTION DETAIL

LAKE COUNTY  
 LAK-2/44-13.05/4.14