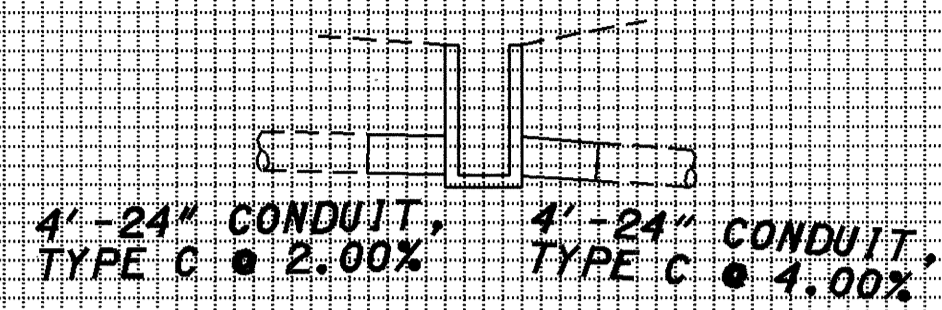


PLOTTED FROM: I:\PROJECTS\18391\dgn\18391qxa.dgn

600

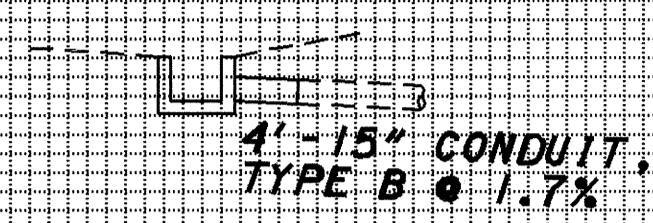
590



D-2
CATCH BASIN, NO. 5
STA 73+65, SR-44,
58' LT
GRATE EL. = 601.30
E 24" = 594.54
E 6" = 595.87

600

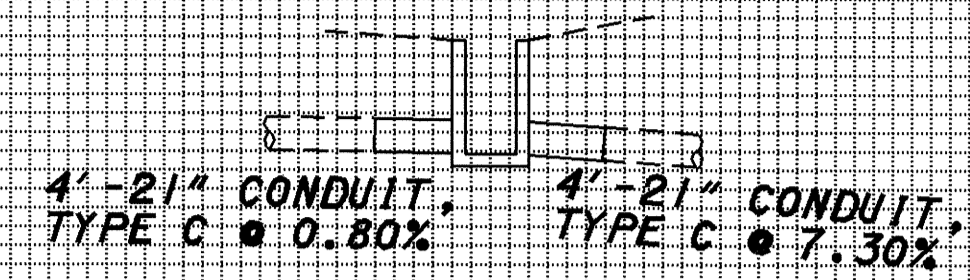
590



D-3
CATCH BASIN, NO. 5
STA 75+50, SR-44,
58' RT
GRATE EL. = 599.07
E 15" = 596.77
E 6" = 597.35

600

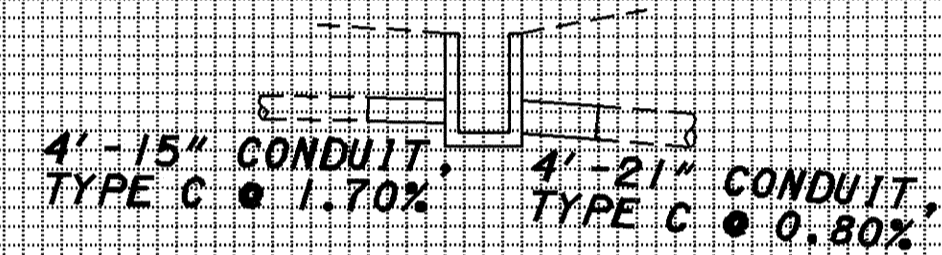
590



D-4
CATCH BASIN, NO. 5
STA 77+00, SR-44,
62' LT
GRATE EL. = 597.80
E 21" = 591.88
E 6" = 592.96

600

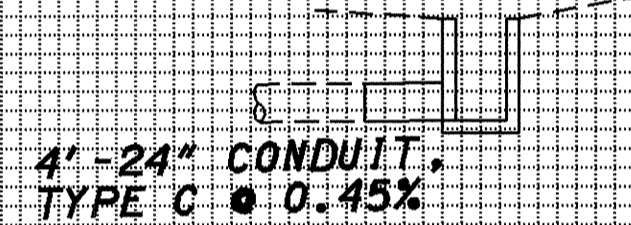
590



D-5
CATCH BASIN, NO. 5
STA 77+50, SR-44,
58' RT
GRATE EL. = 598.14
E 21" = 592.90
E 15" = 593.40
E 6" = 593.98

600

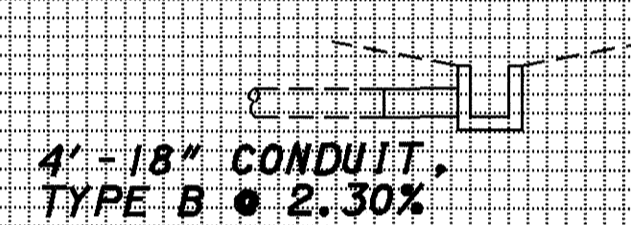
590



D-6
CATCH BASIN, NO. 5
STA 13+50, RAMP D,
19' RT
GRATE EL. = 598.84
E 24" = 593.46
E 6" = 594.79

600

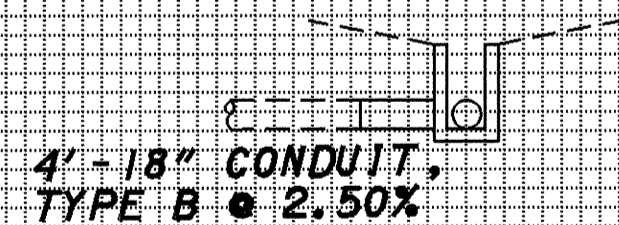
590



D-7
CATCH BASIN, NO. 2-2A
STA 98+88, SR-44,
72' RT
GRATE EL. = 596.50
WINDOW EL = 596.00
E 18" = 593.80
E 6" = 594.80

600

590



D-8
CATCH BASIN, NO. 2-2A
STA 99+60, SR-44,
60' RT
GRATE EL. = 596.50
WINDOW EL = 596.00
E 18" = 592.10

DRAWN	EMK
CALCULATED	EMK
CHECKED	LDH
REVISED	

STORM SEWER PROFILE

LAKE COUNTY
LAK-2/44-13.05/4.14