

MONUMENT LEGEND

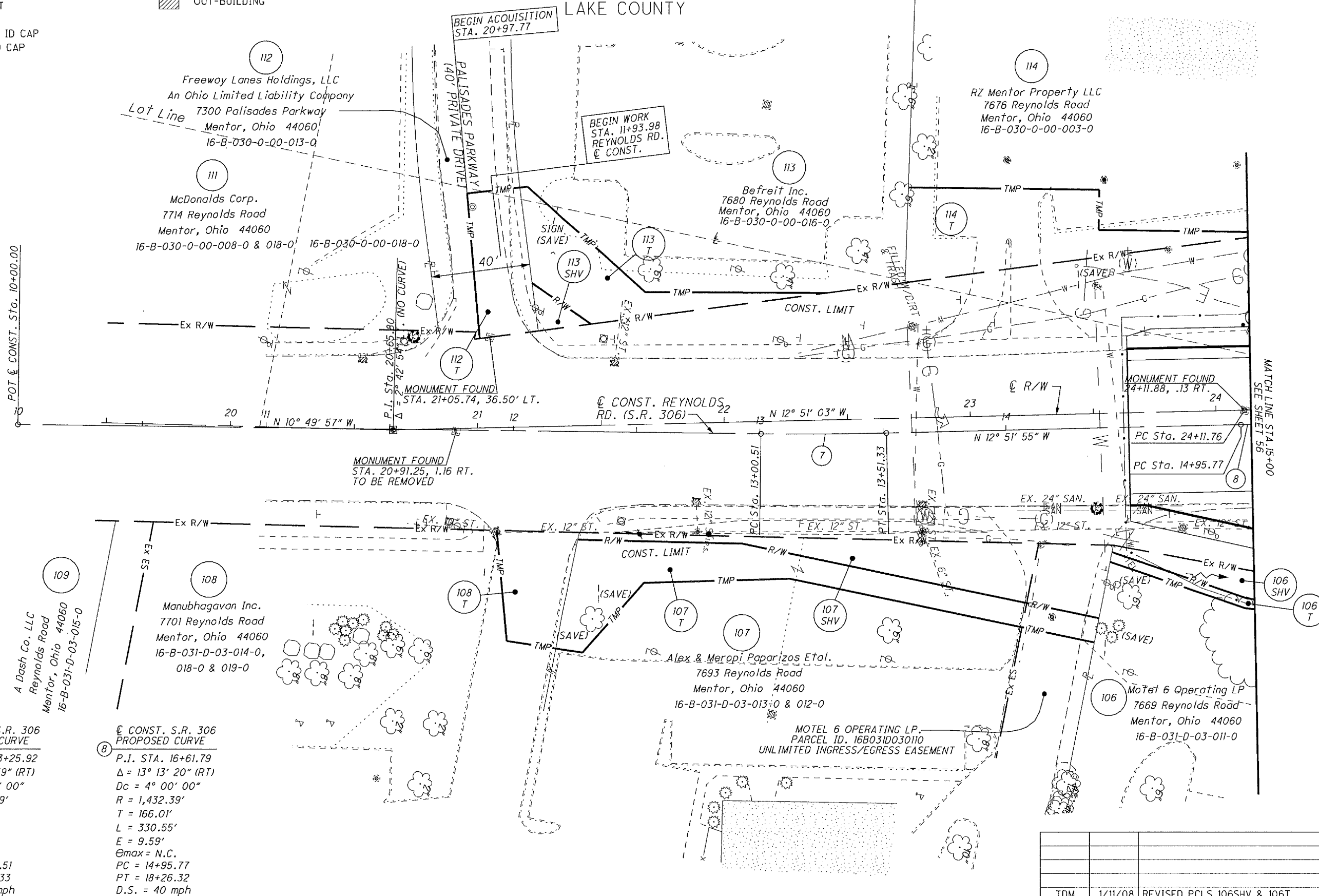
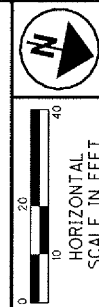
- ☐ EXISTING R/W MONUMENT BOX
- ▣ PROPOSED R/W MONUMENT BOX
- ⊙ EXISTING CONCRETE MONUMENT
- PROPOSED CONCRETE MONUMENT
- ⦿ RAILROAD SPIKE FOUND
- ⦿ RAILROAD SPIKE SET
- I.P.F. IRON PIN FOUND
- ⊙ I.P.F. IRON PIN FOUND W/ ID CAP
- I.P.S. IRON PIN SET W/ ID CAP
- ⊙ I.P.S. IRON PIPE FOUND
- ⊙ I.P.S. IRON PIPE SET
- ⦿ P.K.F. P.K. NAIL FOUND
- ⦿ P.K.S. P.K. NAIL SET

STRUCTURE KEY

- RESIDENTIAL
- ▣ COMMERCIAL
- ▨ OUT-BUILDING

PART OF TRACT 5, BLAKE & CARROL LOTS, T10N - R9W
CITY OF MENTOR
LAKE COUNTY

NOTE: THE EXISTING RIGHT OF WAY WIDTH AND LOCATION WERE DETERMINED USING DOCUMENTATION, LAK-2-4.442, LAK-306-6.50, LAK-306-6.82, LAK-306-7.12, ON FILE FROM THE OHIO DEPARTMENT OF TRANSPORTATION DISTRICT 12 AND DOCUMENTS ON FILE AT THE LAKE COUNTY RECORDER'S OFFICE.



⑦ **CONST. S.R. 306 PROPOSED CURVE**
 P.I. STA. 13+25.92
 $\Delta = 2^\circ 01' 59''$ (RT)
 $D_c = 4^\circ 00' 00''$
 $R = 1,432.39'$
 $T = 25.41'$
 $L = 50.82'$
 $E = 0.23'$
 $\Theta_{max} = N.C.$
 $PC = 13+00.51$
 $PT = 13+51.33$
 $D.S. = 40$ mph

⑧ **CONST. S.R. 306 PROPOSED CURVE**
 P.I. STA. 16+61.79
 $\Delta = 13^\circ 13' 20''$ (RT)
 $D_c = 4^\circ 00' 00''$
 $R = 1,432.39'$
 $T = 166.01'$
 $L = 330.55'$
 $E = 9.59'$
 $\Theta_{max} = N.C.$
 $PC = 14+95.77$
 $PT = 18+26.32$
 $D.S. = 40$ mph

REV. BY	DATE	DESCRIPTION
TDM	1/11/08	REVISED PCLS 106SHV & 106T
JMM	3/16/07	PARCEL 112 OWNERSHIP CHANGE
REV. BY	DATE	DESCRIPTION
DATE COMPLETED - JUNE 29, 2006		

PID NO. **13486**

R/W DESIGNER: J.E.S.
R/W REVIEWER: J.E.K.

RIGHT OF WAY TOPO SHEET
REYNOLDS RD. SR 306
BEGIN TO STA. 15+00

LAK-2-3.32

54 / 60

1665
1679

\\ARRR01\DATA\ACT\CIVIL\2804\108\13486\ROAD\SHETS\13486RPP4.DGN
 1/15/2008 2:53:21 PM
 BELLEMAN

* DENOTES RIGHT OF WAY ENCROACHMENT