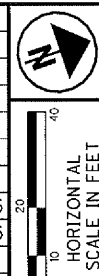
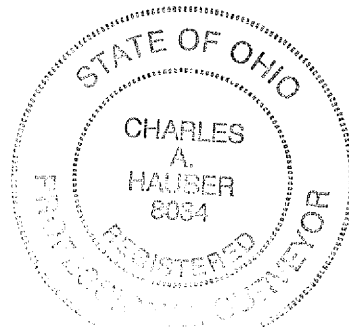


T-9-N, R-10-W
CITY OF WILLOUGHBY
FORMER WILLOUGHBY TOWNSHIP
LAKE COUNTY

JMM	11/12/07	PARCEL 53 OWNERSHIP CHANGE
REV. BY	DATE	DESCRIPTION
FIELD REVIEW BY FRANK T. RAMPS		DATE: 6/6/06
OWNERSHIP VERIFIED BY JAMES M. LOCH		DATE: 6/6/06
DATE COMPLETED 6/9/06		



SURVEYORS SEAL



SIGNED: *Charles A. Hauser*
DATE: *Nov 29, 2007*

SCALE 1" = 40'

STRUCTURE KEY

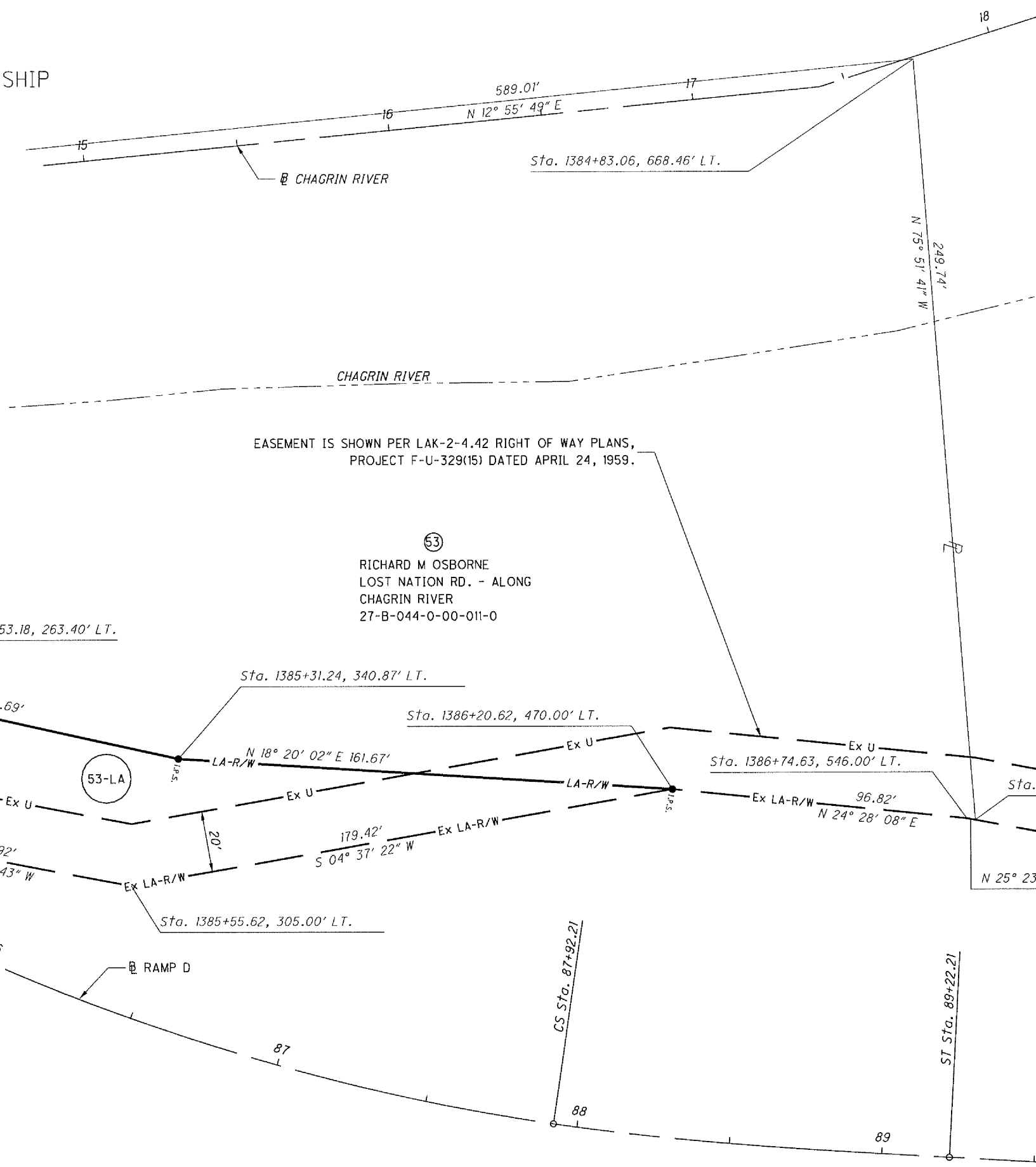
- RESIDENTIAL
- COMMERCIAL
- OUT-BUILDING

MONUMENT LEGEND

- EX. MONUMENT BOX FOUND
- EX. R/W MONUMENT
- P.F. I.P. FOUND IRON PIN/REBAR/
IRON PIPE/AXLE
- I.P.S. IRON PIN SET W/ ID CAP
1-1/2" ALUMINUM CAP. ODOT R/W DIST. 12

LOST NATION ROAD RAMP D CURVE DATA

P.I. STA. = 86+09.33	P.I. STA. = 88+35.58
$\Delta = 41^{\circ}41'09''$ (LT)	Ls = 130.00'
Dc = 8° 00' 00"	$\theta_s = 5^{\circ}12'00''$
R = 716.20'	LT = 86.70'
$\Delta c = 31^{\circ}41'09''$ (LT)	ST = 43.37'
Lc = 396.07	x = 129.89'
Es = 51.12	y = 3.93'
emax = 0.060	K = 64.98'
	p = 0.98'
	emax = 0.060



MATCH LINE STA. 85+10

END ACQUISITION
STA. 1386+20.62
EX. \odot R/W SR 2
(NOT SHOWN)

PID NO. **13486**

R/W DESIGNER: JMM
R/W REVIEWER: CAH

R/W BOUNDARY SHEET
RAMP D STA. 85+10 TO STA. 89+50

LAK-2-3.32

G:\Project\lak\13486\row\sheets\13486RP26.dgn 11/29/2007 2:11:12 PM jmcderia