

LOST NATION ROAD RAMP D CURVE DATA

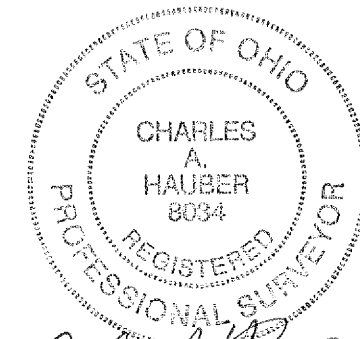
P.I. STA. = 83+56.16 P.I. STA. = 86+09.33
 Ls = 120.00' Δ = 41°41'09" (LT)
 Bs = 4° 48' 00" Dc = 8° 00' 00"
 LT = 80.03' R = 716.20'
 ST = 40.03' Δc = 31°41'09" (LT)
 x = 119.92' Lc = 396.07'
 y = 3.35' Es = 51.12'
 k = 59.99' emax = 0.060
 p = 0.84'
 emax = 0.060

SR 2 EX. C R/W CURVE DATA

6 P.I. STA. 1381+44.93
 D = 28° 00' 06" (RT)
 Dc = 1° 15' 00"
 R = 4,583.66'
 T = 1,142.91'
 L = 2,240.14'
 E = 140.34'
 C = 2217.91
 CB = N 65°39'46" E

T-9-N, R-10-W
 CITY OF WILLOUGHBY
 FORMER WILLOUGHBY TOWNSHIP
 LAKE COUNTY

SURVEYORS SEAL



SIGNED: *Charles A. Hauber*
 DATE: Dec 20, 2007

PID NO. 13486
 R/W DESIGNER JMM
 R/W REVIEWER CAH

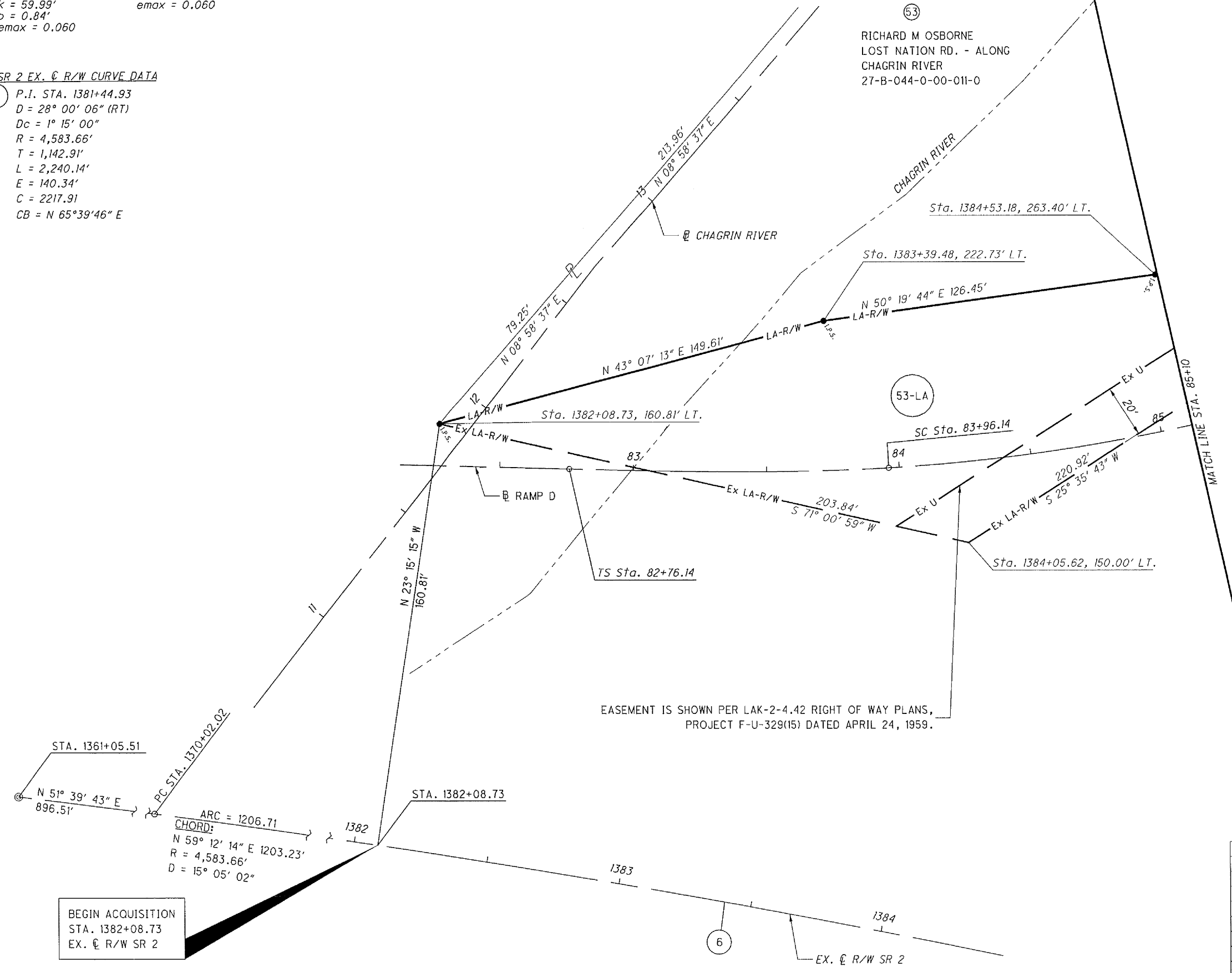
SCALE 1" = 40'

R/W BOUNDARY SHEET
 RAMP D STA. 82+00 TO STA. 85+10

LAK-2-3.32

47 / 60

G:\Project\lak\13486\row\sheet\13486RP24.dgn 12/17/2007 6:54:18 AM jmaderia



STRUCTURE KEY

- RESIDENTIAL
- COMMERCIAL
- OUT-BUILDING

MONUMENT LEGEND

- EX. MONUMENT BOX FOUND
- EX. R/W MONUMENT
- I.P. FOUND IRON PIN/REBAR/IRON PIPE/AXLE
- IRON PIN SET W/ ID CAP
- 1-1/2" ALUMINUM CAP. ODOT R/W DIST. 12

REV. BY	DATE	DESCRIPTION
JMM	11/12/07	PARCEL 53 OWNERSHIP CHANGE
FIELD REVIEW BY FRANK T. RAMPS DATE: 6/6/06		
OWNERSHIP VERIFIED BY FRANK T. RAMPS DATE: 6/6/06		
DATE COMPLETED 6/9/06		

BEGIN ACQUISITION
 STA. 1382+08.73
 EX. C R/W SR 2