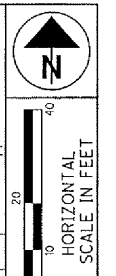


STA. 131+94.12 VINE ST (SR 640)  
STA. 21+50.62 RAMP B (SR-2)

STA. 132+21.60 VINE ST (SR 640)  
STA. 29+19.81 LAKELAND BLVD.

SURVEY & CONST  
VINE STREET (SR 640)



PID NO.  
**13486**

R/W DESIGNER  
CAC  
R/W REVIEWER  
KDO

**RIGHT OF WAY TOPO SHEET  
VINE STREET (RIGHT)  
RESUME ACQUISITION TO END ACQUISITION**

**LAK-2-3.32**

32 / 60

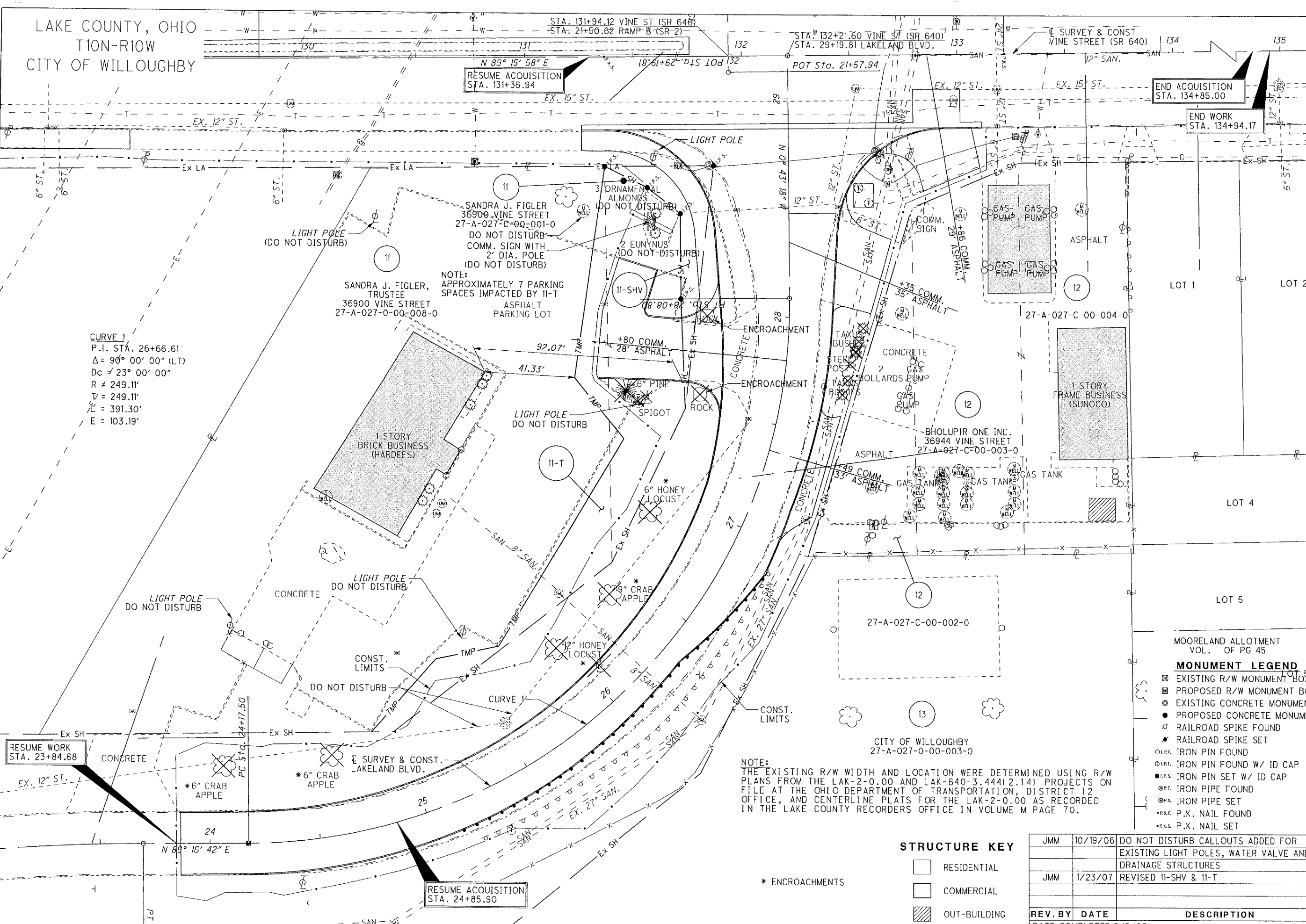
1651  
1679

**CURVE 1**  
P.I. STA. 26+66.61  
 $\Delta = 90^\circ 00' 00''$  (LT)  
 $D_c = 23^\circ 00' 00''$   
 $R = 249.11'$   
 $V = 249.11'$   
 $L = 391.30'$   
 $E = 103.19'$

RESUME ACQUISITION  
STA. 131+36.94

END ACQUISITION  
STA. 134+85.00

END WORK  
STA. 134+94.17



SANDRA J. FIGLER  
36900 VINE STREET  
27-A-027-C-00-001-0  
DO NOT DISTURB  
COMM. SIGN WITH  
2" DIA. POLE  
(DO NOT DISTURB)

NOTE:  
APPROXIMATELY 7 PARKING  
SPACES IMPACTED BY 11-T  
ASPHALT  
PARKING LOT

1 STORY  
BRICK BUSINESS  
(HARDEES)

BHOLUPIR ONE INC.  
36944 VINE STREET  
27-A-027-C-00-003-0

1 STORY  
FRAME BUSINESS  
(SUNOCO)

**NOTE:**  
THE EXISTING R/W WIDTH AND LOCATION WERE DETERMINED USING R/W  
PLANS FROM THE LAK-2-0.00 AND LAK-640-3.444(2.14) PROJECTS ON  
FILE AT THE OHIO DEPARTMENT OF TRANSPORTATION, DISTRICT 12  
OFFICE, AND CENTERLINE PLATS FOR THE LAK-2-0.00 AS RECORDED  
IN THE LAKE COUNTY RECORDERS OFFICE IN VOLUME M PAGE 70.

- MOORELAND ALLOTMENT  
VOL. OF PG 45
- MONUMENT LEGEND**
- EXISTING R/W MONUMENT BOX
  - PROPOSED R/W MONUMENT BOX
  - EXISTING CONCRETE MONUMENT
  - PROPOSED CONCRETE MONUMENT
  - RAILROAD SPIKE FOUND
  - RAILROAD SPIKE SET
  - IRON PIN FOUND
  - IRON PIN FOUND W/ ID CAP
  - IRON PIN SET W/ ID CAP
  - IRON PIPE FOUND
  - IRON PIPE SET
  - P.K. NAIL FOUND
  - P.K. NAIL SET

**STRUCTURE KEY**

- RESIDENTIAL
- COMMERCIAL
- OUT-BUILDING

\* ENCROACHMENTS

RESUME WORK  
STA. 23+84.68

RESUME ACQUISITION  
STA. 24+85.90

JMM	10/19/06	DO NOT DISTURB CALLOUTS ADDED FOR EXISTING LIGHT POLES, WATER VALVE AND DRAINAGE STRUCTURES
JMM	1/23/07	REVISED 11-SHV & 11-T
<b>REV. BY</b>	<b>DATE</b>	<b>DESCRIPTION</b>
	6/9/06	

G:\Project\lak\13486\row\sheet\13486RPO6.dgn