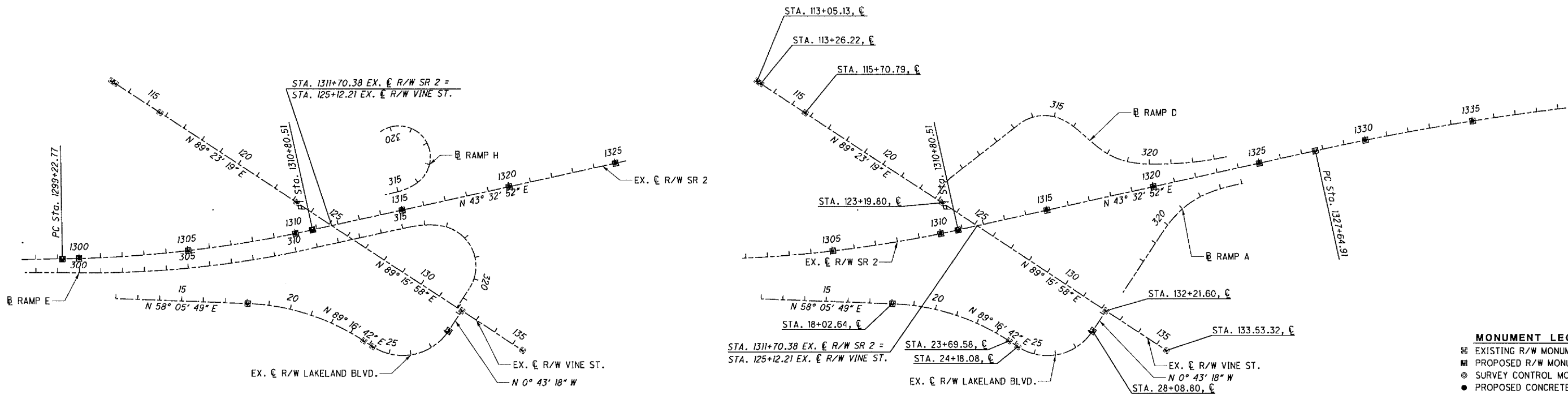


E of RIGHT OF WAY	DISTANCE FROM E of RIGHT OF WAY		MONUMENT ASSEMBLY	MONUMENT BOX ADJUSTED TO GRADE	MONUMENT ASSEMBLY REMOVED	E OF RIGHT-OF-WAY		E of RIGHT OF WAY	DISTANCE FROM E of RIGHT OF WAY		MONUMENT ASSEMBLY	MONUMENT BOX ADJUSTED TO GRADE	MONUMENT ASSEMBLY REMOVED	E OF RIGHT-OF-WAY	
	LEFT	RIGHT				NORTHING	EASTING		LEFT	RIGHT				NORTHING	EASTING
SR 640			ITEM 604E 38500	ITEM 604E 39500	ITEM 202E 60010			LAKELAND BLVD.			ITEM 604E 38500	ITEM 604E 39500	ITEM 202E 60010		
113+05.13				1		721692.32	2261055.13	18+02.64			1			721193.59	2262141.57
113+26.22				1		721692.48	2261075.99	23+69.58				1		721350.86	2262678.99
115+70.79				1		721695.32	2261320.54	24+18.08				1		721351.47	2262726.91
123+19.80			1			721703.15	2262069.75	28+08.80			1			721603.70	2262972.87
132+21.60	0.14'			1		721714.70	2262971.47								
135+53.32				1		721718.95	2263302.93								
TOTAL TO GENERAL SUMMARY								TOTAL TO GENERAL SUMMARY							
						1	5							2	2

SEE SHEET 1 FOR PROPOSED E R/W MONUMENT INFORMATION ON SR. 2.



- MONUMENT LEGEND**
- EXISTING R/W MONUMENT BOX
 - PROPOSED R/W MONUMENT BOX
 - SURVEY CONTROL MONUMENT
 - PROPOSED CONCRETE MONUMENT
 - RAILROAD SPIKE FOUND
 - RAILROAD SPIKE SET
 - IRON PIN SET W/ ID CAP
 - IRON PIPE FOUND, AS NOTED
 - P.K. NAIL FOUND
 - P.K. NAIL SET

BASIS FOR BEARINGS:

COORDINATES SHOWN ARE SURFACE COORDINATES, OHIO STATE PLANE COORDINATE SYSTEM, NORTH ZONE, NAD 1983 (CORS 95)

COMBINED SCALE FACTOR TO CONVERT SURFACE COORDINATES TO GRID COORDINATES - 0.99997719

CENTERLINES OF CONSTRUCTION FOR SIDE ROADS AND BASELINES OF CONSTRUCTION FOR RAMP ARE GRAPHICALLY SHOWN FOR INFORMATIONAL PURPOSES. REFER TO THE CONSTRUCTION DRAWINGS FOR DETAILED GEOMETRIC DATA OF ALL SIDE ROAD CENTERLINES OF CONSTRUCTION AND RAMP BASELINES.

I HEREBY CERTIFY THAT THIS PLAT IS A TRUE DELINEATION OF A SURVEY MADE FOR THE OHIO DEPARTMENT OF TRANSPORTATION.

THE ESTABLISHMENT OF THE EXISTING CENTERLINES OF SR 2 SHOWN ON THIS PLAN AS OF THIS DATE WERE PERFORMED BY ME OR UNDER MY DIRECT SUPERVISION.

PLAT APPROVED FOR RECORDING
 JAMES R. GILLS
 LAKE COUNTY ENGINEER

RECEIVED _____, 20____
 RECORDED _____, 20____
 BOOK _____ PAGE _____
 COUNTY RECORDER

LOT LINES ARE GRAPHICALLY SHOWN FOR INFORMATIONAL PURPOSES. INTERSECTIONS OF LOT LINES AND STREETS ARE GRAPHICALLY SHOWN UNLESS A STATION AND BEARING IS GIVEN.

THE PROPOSED RIGHT OF WAY SHALL BE REFERENCED FROM THE CENTERLINE OF RIGHT OF WAY.

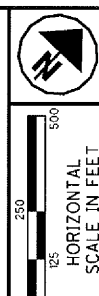
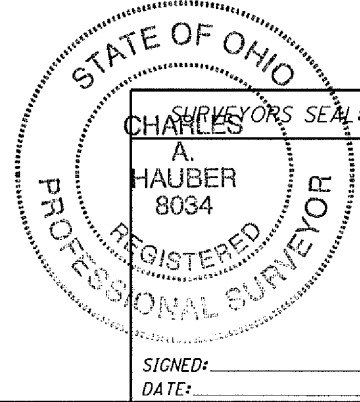
THE PLACING OF MONUMENTS SHALL BE UNDER THE DIRECTION OF A SURVEYOR REGISTERED IN THE STATE OF OHIO. THE CENTERLINE MONUMENT ASSEMBLY BOXES WILL BE INSTALLED BY THE HIGHWAY CONTRACTOR AT THE TIME OF CONSTRUCTION. THE IRON PIN WITH CAP MARKING THE ACTUAL CENTERLINE STATION POINT AND ANY REFERENCE MONUMENTS ARE TO BE SET BY THE RIGHT OF WAY DESIGN CONSULTANT.

CHANGES OR ALTERATIONS TO THE LOCATION OF ANY MONUMENTS SHOWN ON THIS PLAT REQUIRE PRIOR APPROVAL OF THE DISTRICT REAL ESTATE ADMINISTRATOR OF THE OHIO DEPARTMENT OF TRANSPORTATION. A REVISED CENTERLINE PLAT WITH THE NEW LOCATIONS SHALL BE RECORDED IN THE APPLICABLE COUNTY RECORDS AND THE OHIO DEPARTMENT OF TRANSPORTATION. SPECIFICATIONS FOR CENTERLINE MONUMENTS, REFERENCE MONUMENTS AND RIGHT OF WAY MONUMENTS ARE SHOWN ON STANDARD CONSTRUCTION DRAWING RM-1.1 OF THE OHIO DEPARTMENT OF TRANSPORTATION.

ORIGINAL GPS CONTROL MONUMENTS

DESIGNATION	NORTHING	EASTING
30 AY	212932.23	682411.94
T 322	217424.29	683060.74
31 P	216429.26	684774.21
Y 322	222251.51	687694.72
M 323	225948.30	696645.41
X 323	232369.22	700774.32
LAK GAR	229388.81	701878.41
K 324	232856.56	708450.81

FOR EX. E R/W SR 2, VINE STREET, AND LAKELAND BLVD. DATA SEE SHEET 1.
 ALL RAMP B DATA SHOWN ARE PROP. B CONSTRUCTION. LIMITS OF R/W FOR SR 2 INCLUDING INTERCHANGE AREAS WERE SET BASED ON EX. E R/W SR 2.



PID NO. **13486**

R/W DESIGNER: JMM
 R/W REVIEWER: CAH

**CENTERLINE PLAT
 VINE STREET RAMP**

LAK-2-3.32

2 / 11
 2 / 60
 1621
 1679

G:\Project\lak\13486\row\sheet\13486RC02.dgn 6/30/2008 3:34:14 PM jmaderia