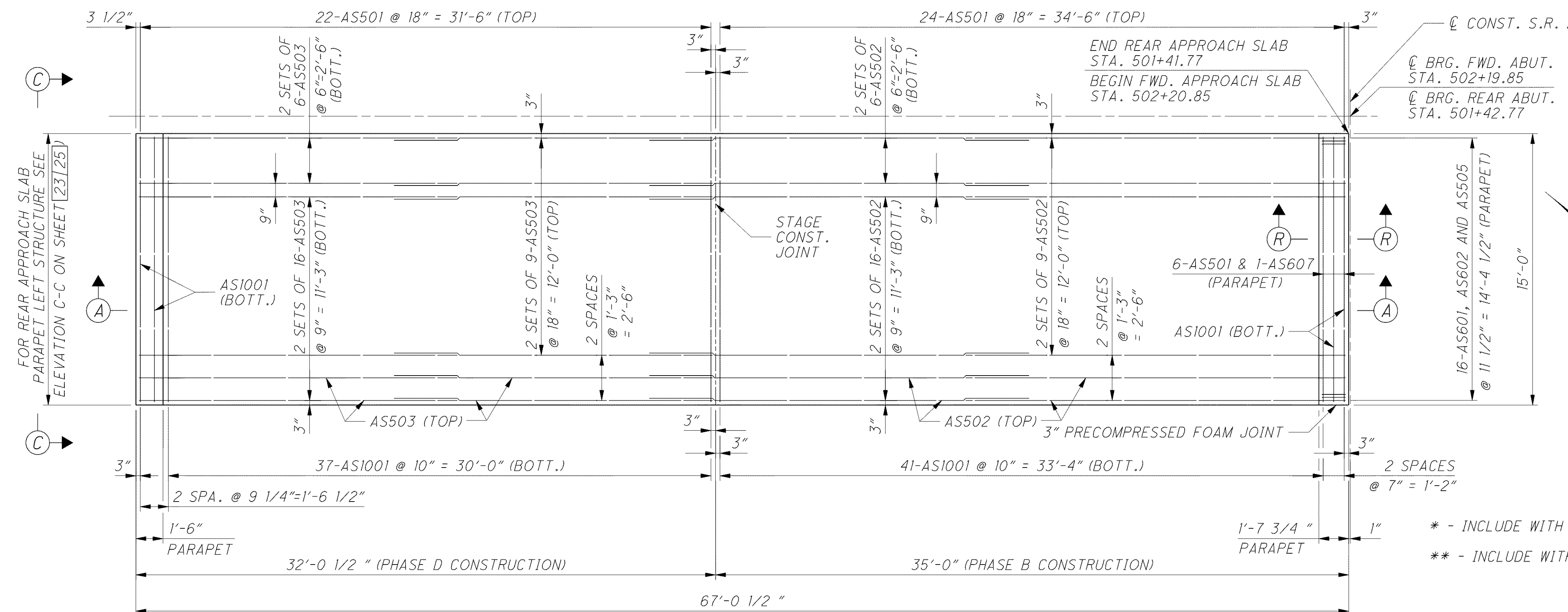


C:\Project\CV000048A001\Drawing\LAK\13486\bridge\LAK002_0760L\sheets\002_0760CMD001.dgn 6/26/2008 10:01:04 AM troxberry



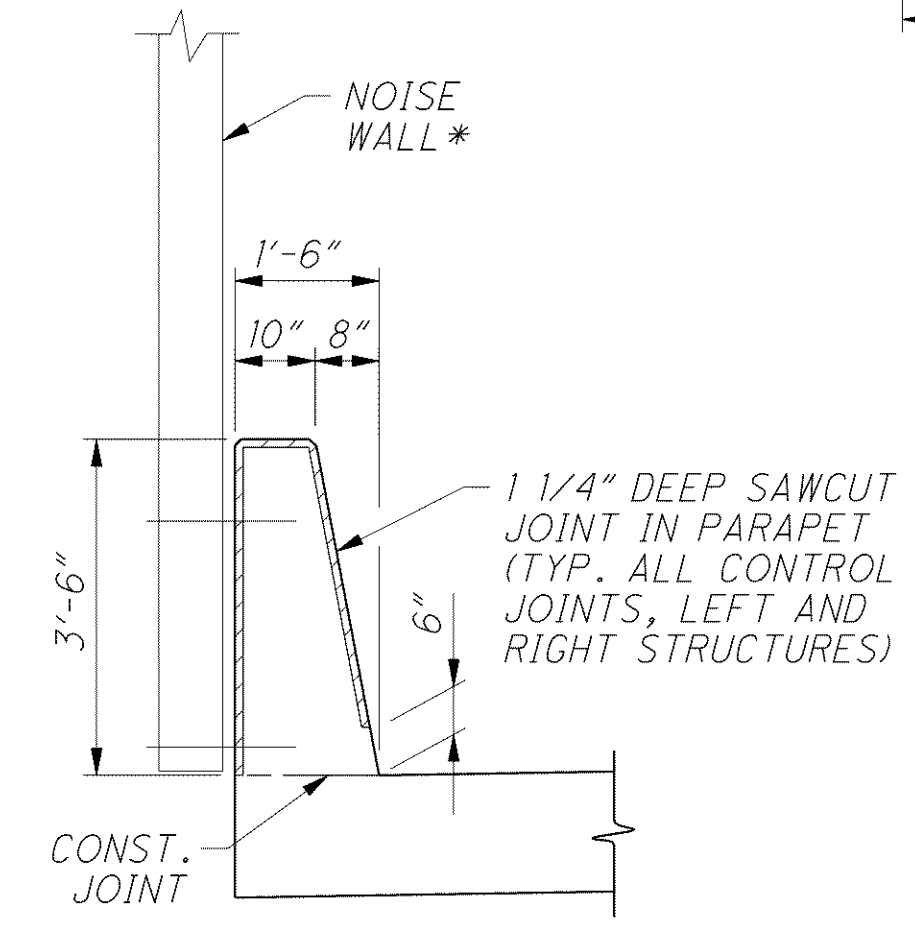
LEGEND

- * - INCLUDE WITH ROADWAY QUANTITIES FOR PAYMENT
- ** - INCLUDE WITH LIGHTING QUANTITIES FOR PAYMENT

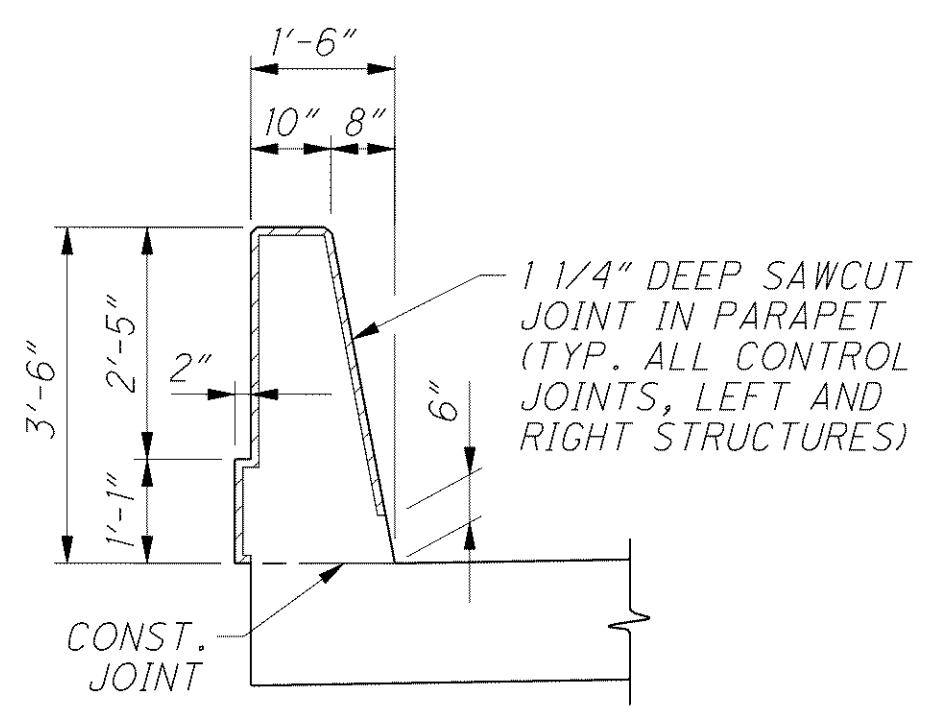
LEFT STRUCTURE APPROACH SLAB
(REAR APPROACH SLAB SHOWN, FORWARD SIMILAR)

NOTES

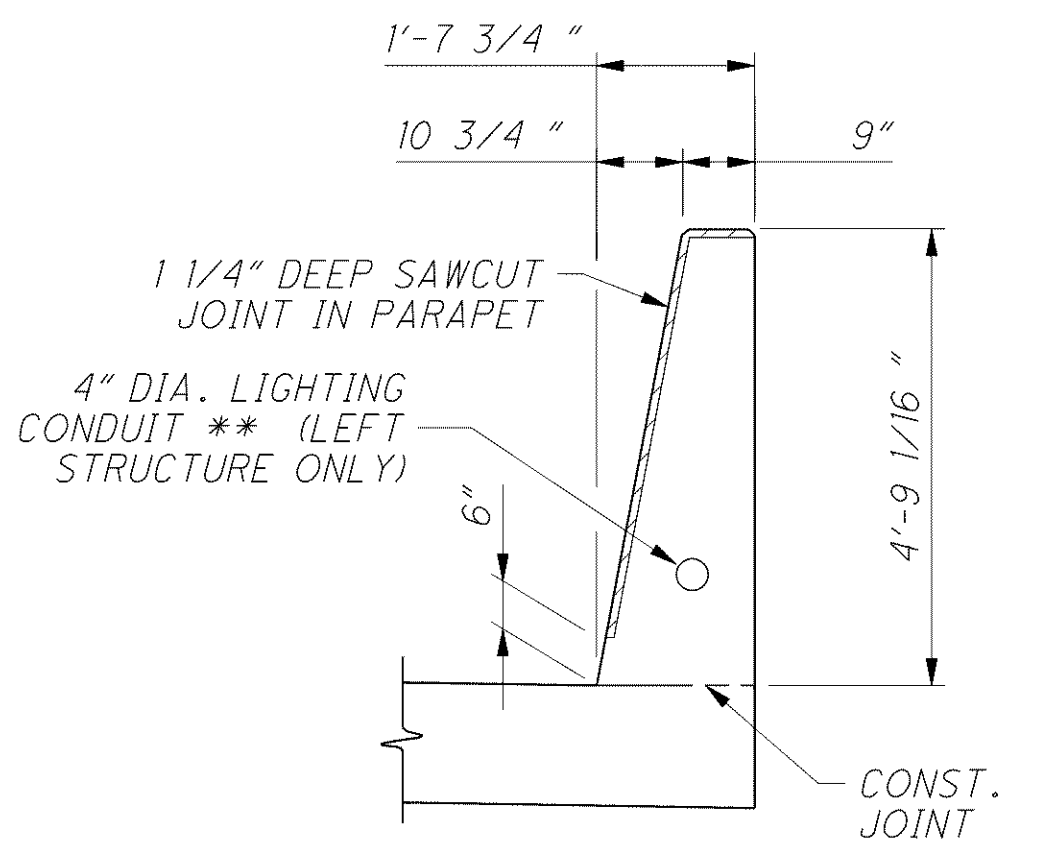
1. MINIMUM BAR LAPS ARE AS FOLLOWS:
#5 BARS = 30"
2. FOR ADDITIONAL SINGLE SLOPE DEFLECTOR PARAPET TYPE SEE O.D.O.T. STANDARD DRAWING SBR-1-91.
3. FOR ADDITIONAL APPROACH SLAB DETAILS SEE O.D.O.T. STANDARD DRAWING AS-1-81.
4. FOR ADDITIONAL APPROACH SLAB DETAILS AND PARAPET REINFORCEMENT SEE SHEET 22[25] AND 23[25].
5. FOR LIST OF ABBREVIATIONS SEE SHEET 4[25].
6. FOR NOISE WALL DETAILS, SEE SHEET 976B OF 1679.



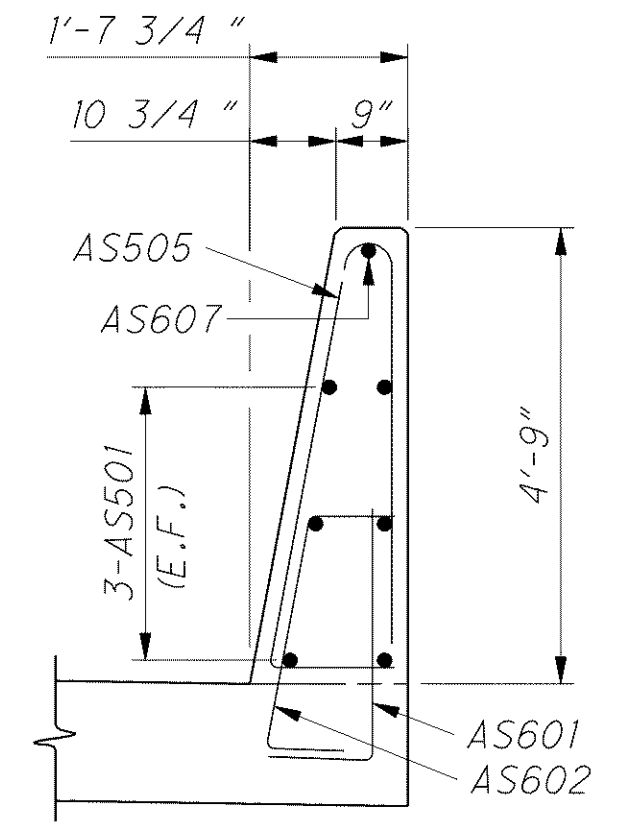
DEFLECTOR PARAPET DETAIL W/ NOISE WALL



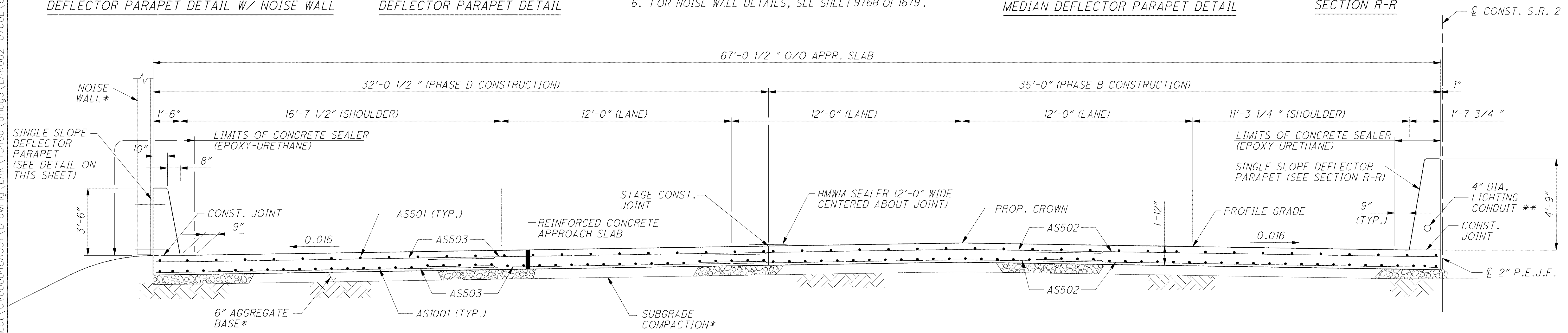
DEFLECTOR PARAPET DETAIL



MEDIAN DEFLECTOR PARAPET DETAIL



SECTION R-R



SECTION A-A