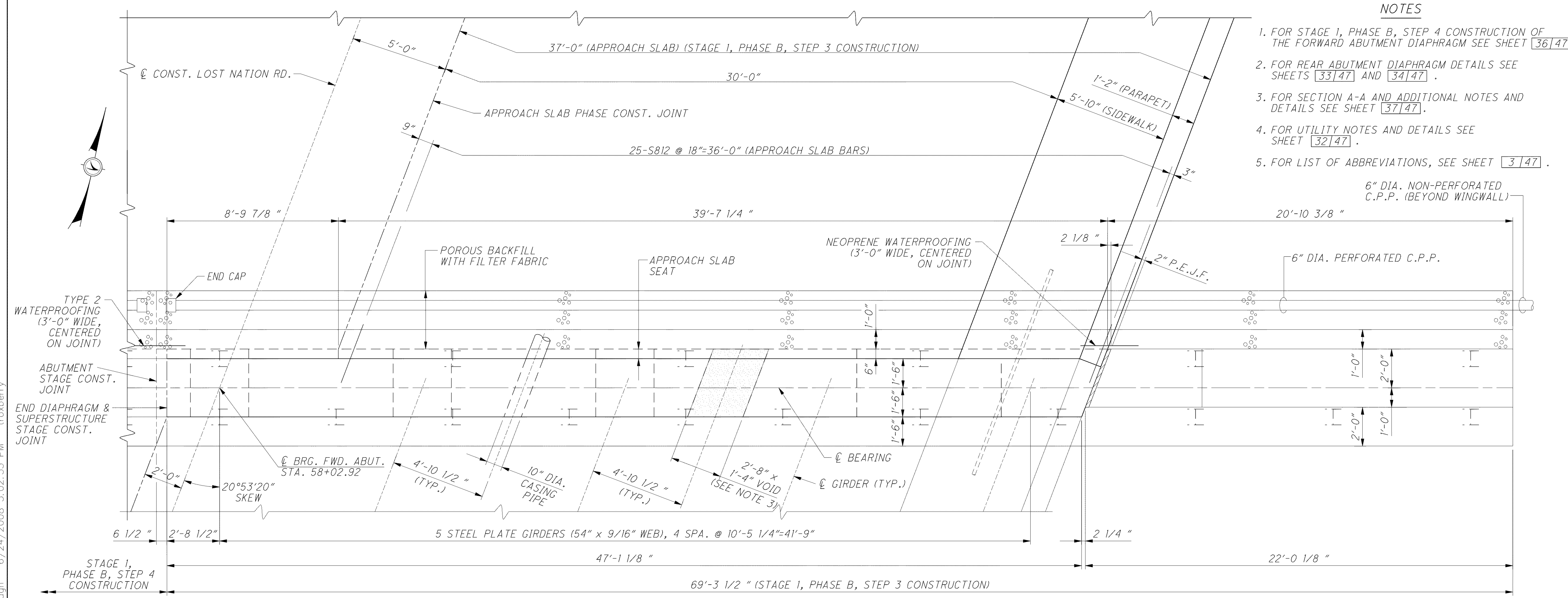
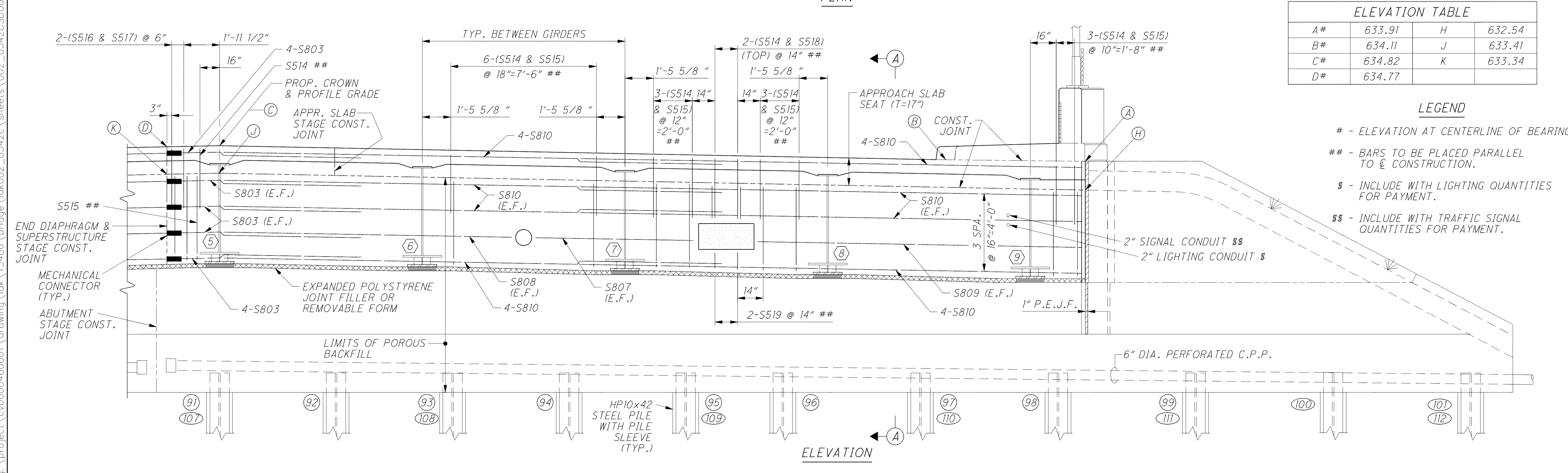


**NOTES**

1. FOR STAGE 1, PHASE B, STEP 4 CONSTRUCTION OF THE FORWARD ABUTMENT DIAPHRAGM SEE SHEET [36/47].
2. FOR REAR ABUTMENT DIAPHRAGM DETAILS SEE SHEETS [33/47] AND [34/47].
3. FOR SECTION A-A AND ADDITIONAL NOTES AND DETAILS SEE SHEET [37/47].
4. FOR UTILITY NOTES AND DETAILS SEE SHEET [32/47].
5. FOR LIST OF ABBREVIATIONS, SEE SHEET [3/47].



**PLAN**



**ELEVATION**

ELEVATION TABLE			
A#	633.91	H	632.54
B#	634.11	J	633.41
C#	634.82	K	633.34
D#	634.77		

**LEGEND**

- # - ELEVATION AT CENTERLINE OF BEARING
- ## - BARS TO BE PLACED PARALLEL TO  $\hat{C}$  CONSTRUCTION.
- \$ - INCLUDE WITH LIGHTING QUANTITIES FOR PAYMENT.
- \$\$ - INCLUDE WITH TRAFFIC SIGNAL QUANTITIES FOR PAYMENT.

q:\project\c000048a001\drawing\lak\13486\bridge\sheet\002\_0542c\0542c\_sheets\002\_0542c.dwg  
 6/24/2008 5:02:33 PM troxberry