

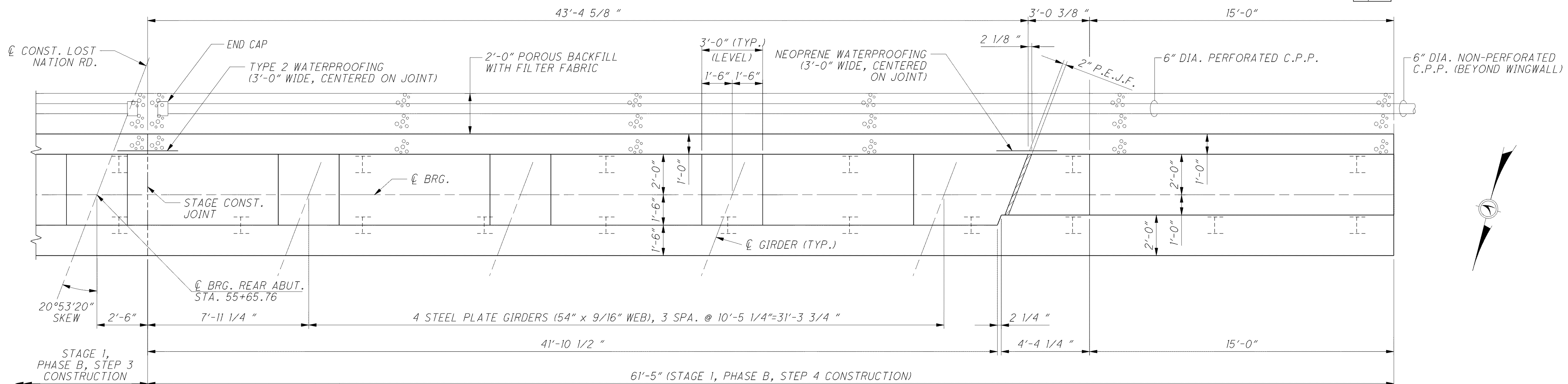
LEGEND

** - BARS TO BE PLACED PARALLEL TO \perp CONSTRUCTION.

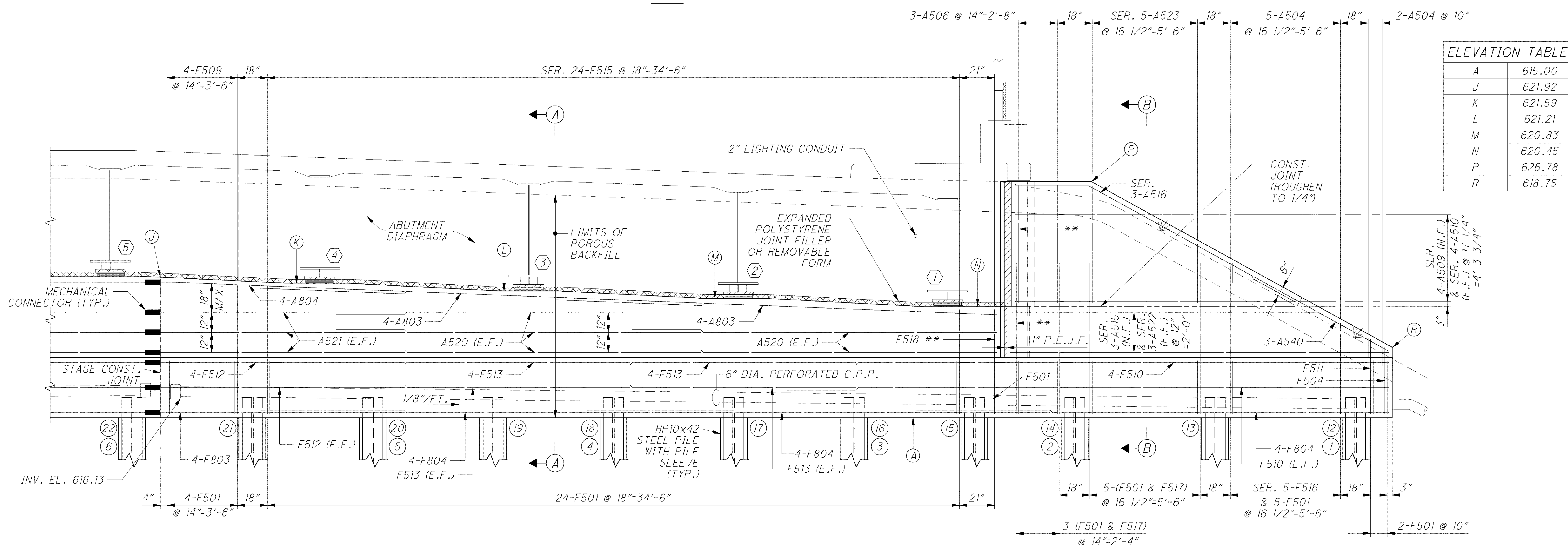
1. FOR STAGE 1, PHASE B, STEP 3 CONSTRUCTION OF THE REAR ABUTMENT SEE SHEET 21/47.
2. FOR FORWARD ABUTMENT DETAILS SEE SHEETS 23/47 AND 24/47.
3. MINIMUM BAR LAPS UNLESS NOTED: #5 BAR = 41" #8 BAR = 87"

NOTES

4. FOR SECTION A-A, SECTION B-B AND ADDITIONAL NOTES SEE SHEET 25/47.
5. ELEVATIONS ARE TAKEN ALONG CENTERLINE OF BEARING.
6. FOR ABUTMENT DIAPHRAGM DETAILS, SEE SHEETS 33/47 AND 34/47.
7. FOR LIST OF ABBREVIATIONS, SEE SHEET 3/47.



PLAN



ELEVATION

ELEVATION TABLE	
A	615.00
J	621.92
K	621.59
L	621.21
M	620.83
N	620.45
P	626.78
R	618.75

o:\project\c\000048a001\drawing\lak\13486\bridge\002_0542c\sheets\002_0542CAR002.dgn 6/24/2008 4:55:45 PM troxberry

DESIGN AGENCY
ARCADIS
 ARCADIS U.S., Inc.
 100 Superior Avenue, Suite 1250 Cleveland, Ohio 44114
 Tel: 216-781-6177 Fax: 216-781-6245 www.arcadis-us.com

DATE	4/07
REVIEWED	CMD
DRAWN	MPB
DESIGNED	RBB
CHECKED	SKS
STRUCTURE FILE NUMBER	4300823

REAR ABUTMENT DETAILS
 BRIDGE NO. LAK-2-0542
 LOST NATION ROAD OVER STATE ROUTE 2

LAK-2-3.32
PID 13486

22 / 47

1568
 1679