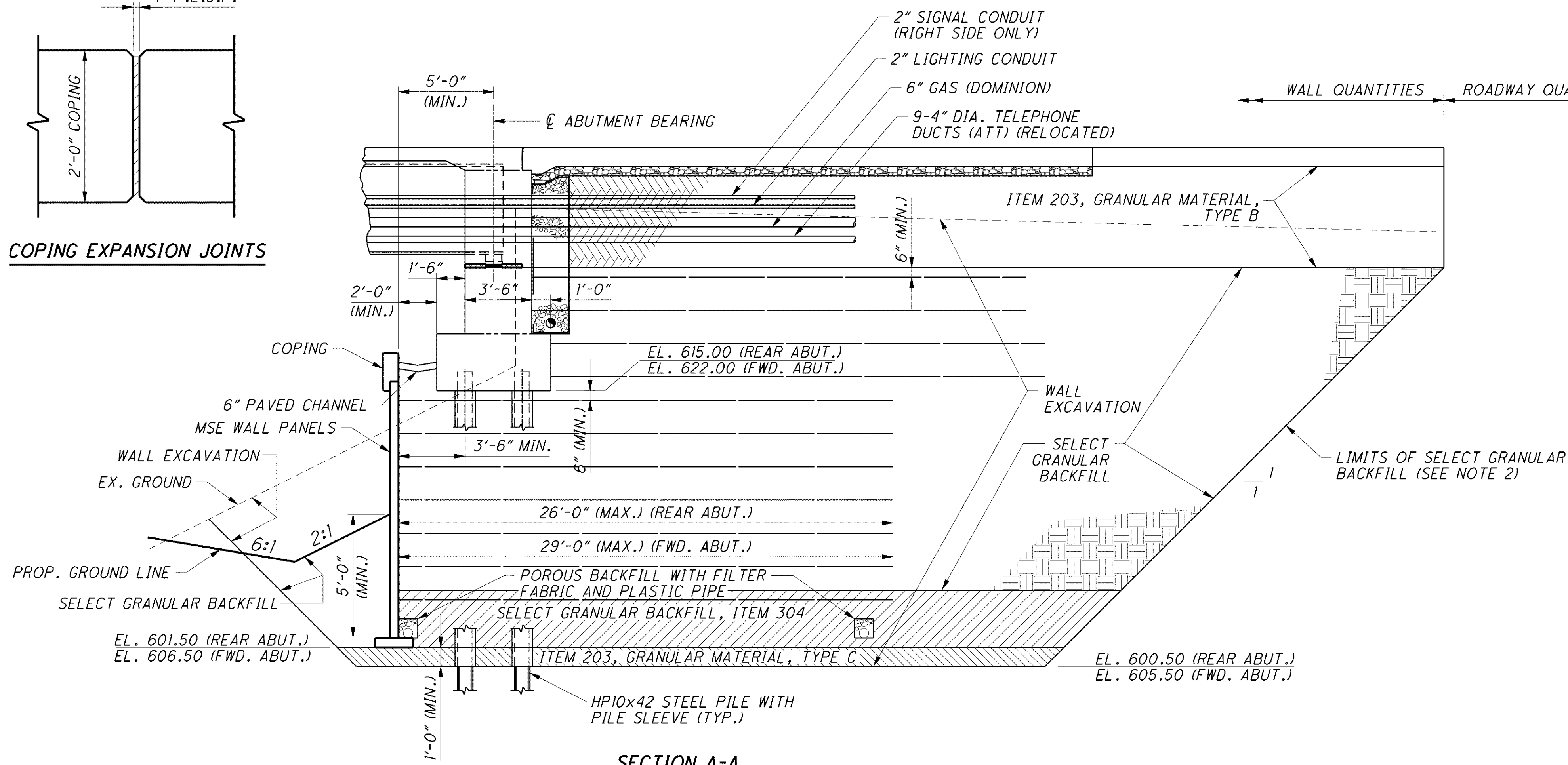


COPING EXPANSION JOINTS

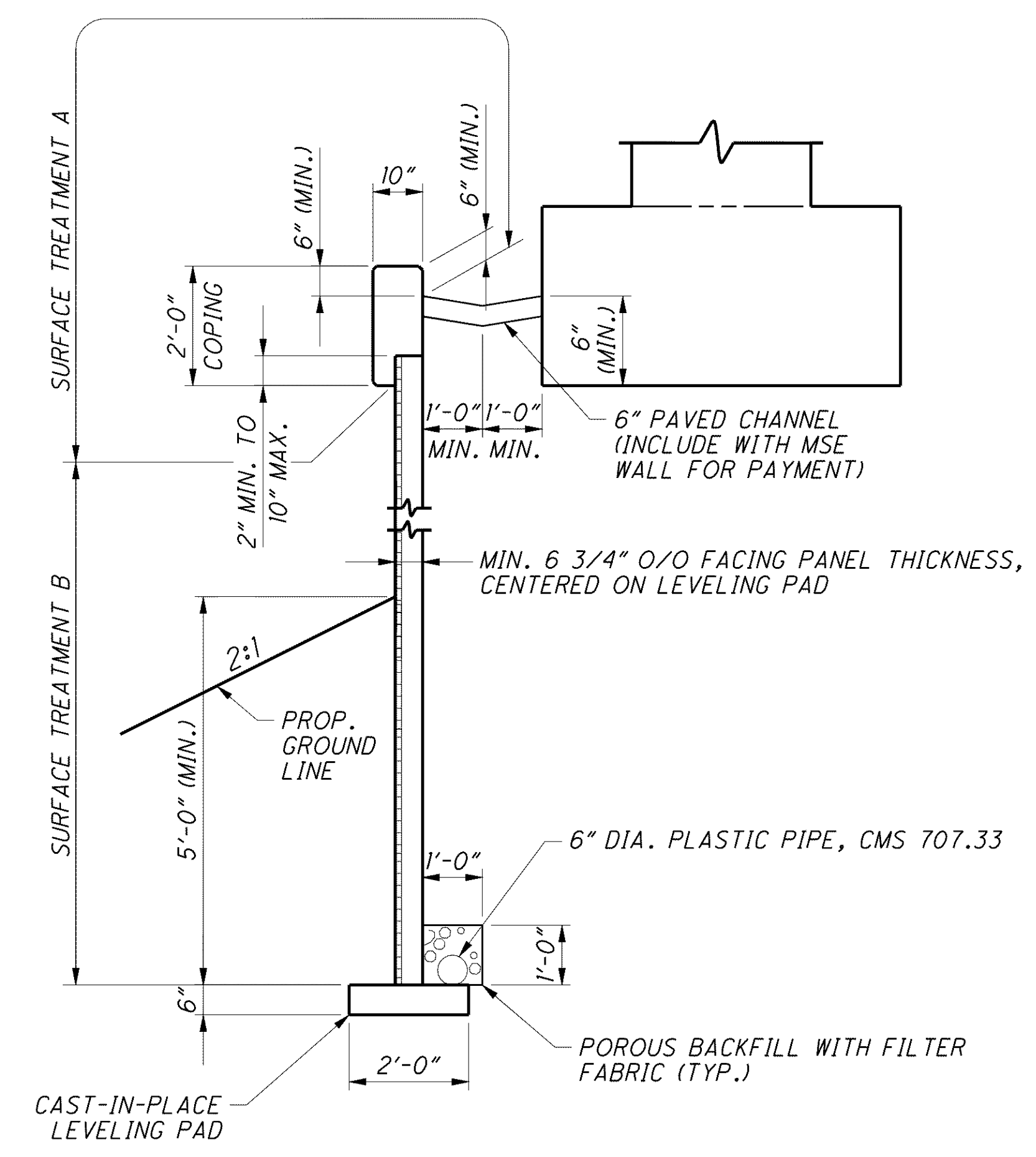


SECTION A-A

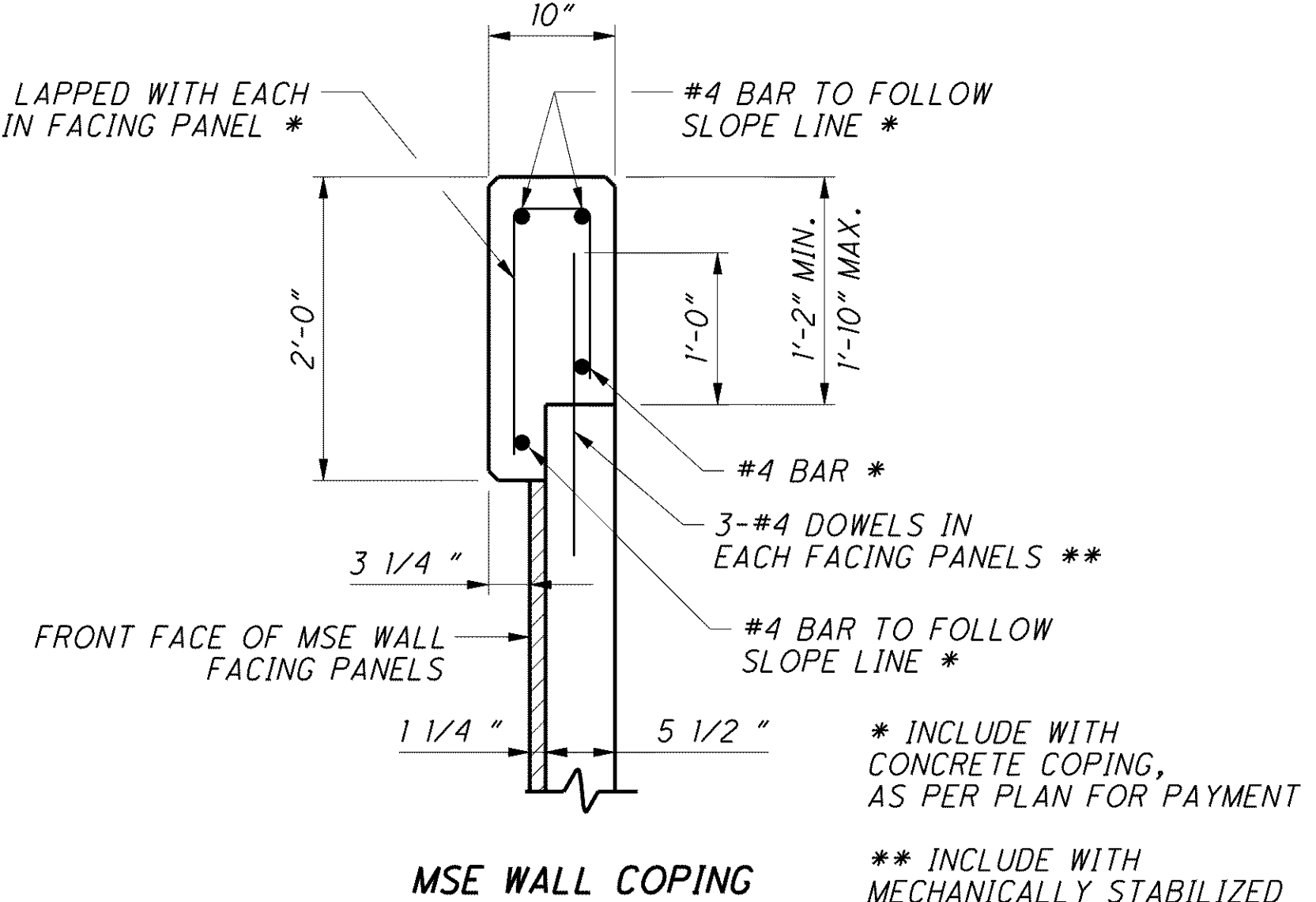
NOTES

- ALLOWABLE BEARING CAPACITY AT BASE OF REINFORCED SOIL IS 5.0 KSF FOR REAR ABUT. AND 4.4 KSF FOR FORWARD ABUT.
- THE SLOPING LINE WHICH DEFINES THE LIMIT OF THE SELECT GRANULAR BACKFILL IS NOT AN ALLOWABLE SLOPE FOR EXCAVATION. CUT THE SIDES OF ALL EXCAVATION TO PREVENT CAVING, OR PROTECT THE EXCAVATION FROM CAVING.
- FOR DESCRIPTION OF SURFACE TREATMENTS A AND B, SEE SHEET [15/47].
- FOR LIST OF ABBREVIATIONS, SEE SHEET [3/47].

FACTORED LOADS TO ABUTMENT			
LOCATION	VERTICAL DEAD LOAD (KIPS)	VERTICAL LIVE LOAD (KIPS)	HORIZONTAL LOAD (KIPS)
REAR ABUT.	976.4	726.2	179.9
FORWARD ABUT.	969.0	725.3	179.9



MSE WALL AND COPING DETAIL



MSE WALL COPING

PARTICIPATION		MSE WALL ESTIMATED QUANTITIES					DESCRIPTION	ABUT'S	AS PER PLAN STRUCTURE SHEET NO.
I REHAB	II TRAC	ITEM	ITEM EXT.	TOTAL	UNIT				
346	1038	203	35110	1,384	CU. YD.	GRANULAR MATERIAL, TYPE B	1,384		
117	353	203	35120	470	CU. YD.	GRANULAR MATERIAL, TYPE C	470		
166	498	512	10100	664	SO. YD.	SEALING OF CONCRETE SURFACES (EPOXY-URETHANE)	664		
2	7	601	20000	9	SO. YD.	CRUSHED AGGREGATE SLOPE PROTECTION	9		
1331	3995	840	20001	5,326	SO. FT.	MECHANICALLY STABILIZED EARTH WALL, AS PER PLAN	5,326	3, 19	
2750	8252	840	21000	11,002	CU. YD.	WALL EXCAVATION	11,002		
287	863	840	22000	1,150	SO. YD.	FOUNDATION PREPARATION	1,150		
2534	7604	840	23000	10,138	CU. YD.	SELECT GRANULAR BACKFILL	10,138		
248	743	840	23050	991	CU. YD.	NATURAL SOIL	991		
8	23	840	24000	31	CU. YD.	POROUS BACKFILL WITH FILTER FABRIC	31		
183	549	840	25010	732	FEET	6" DRAINAGE PIPE, PERFORATED	732		
27	83	840	25020	110	FEET	6" DRAINAGE PIPE, NON-PERFORATED	110		
92	277	840	26001	369	FEET	CONCRETE COPING, AS PER PLAN	369	19	
1152	3458	840	26050	4610	SO. FT.	AESTHETIC SURFACE TREATMENT	4610		
1	4	840	27000	5	DAY	ON-SITE ASSISTANCE	5		
LUMP	LUMP	840	28000		LUMP	SGB INSPECTION AND COMPACTION TESTING			

CALC. BY: M.P.B. DATE: 11/07
CHK'D BY: R.B.B. DATE: 12/07