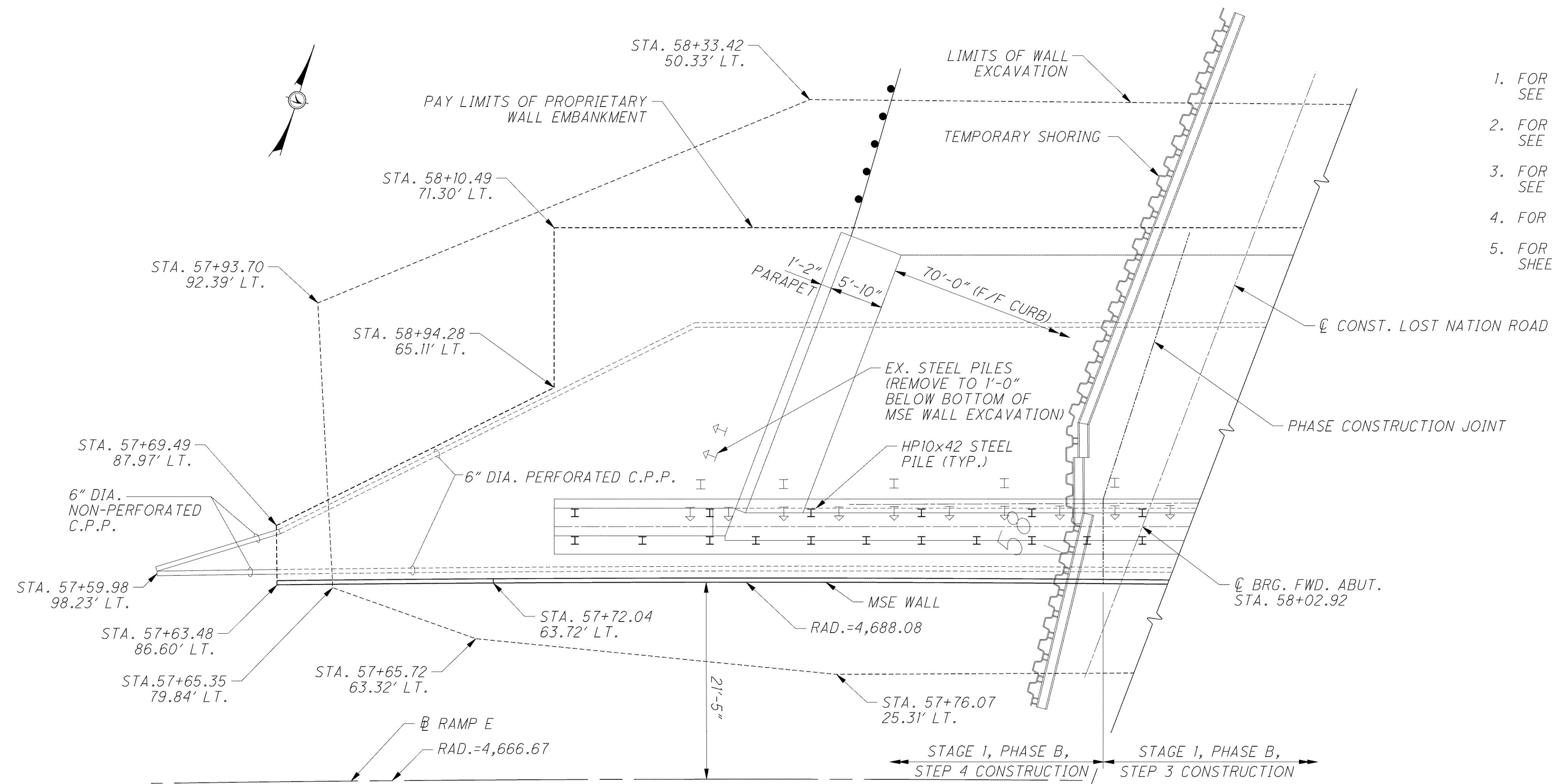
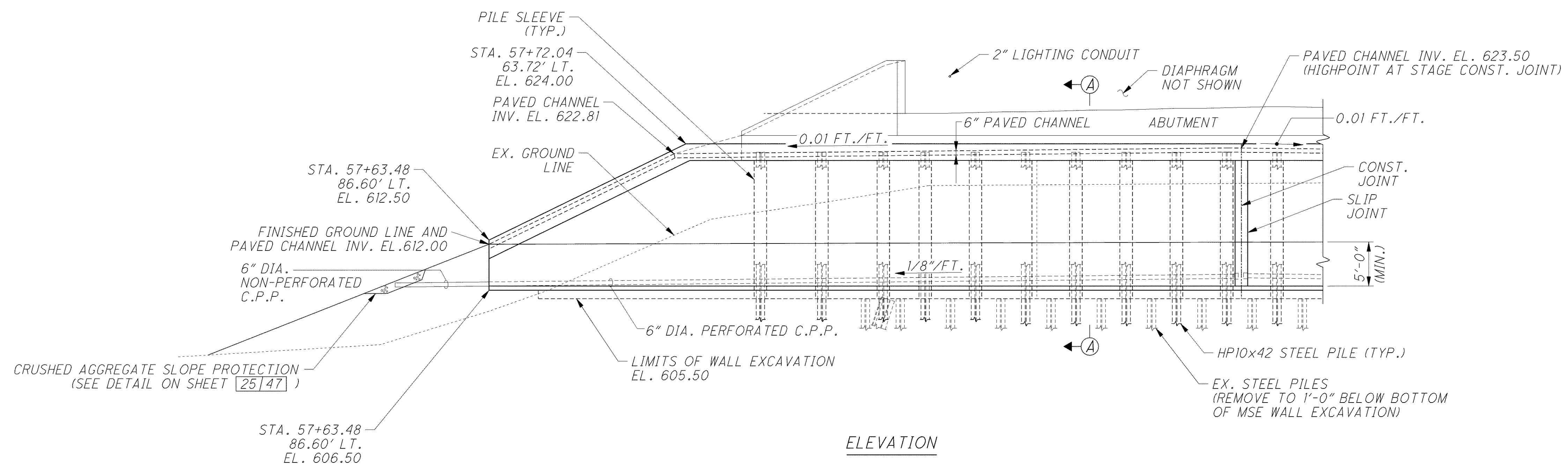


o:\project\cv000048a001\drawing\lak\13486\bridge\lak002_0542c\sheets\02_0542CMD007.dgn 6/24/2008 4:59:08 PM troxberry



PLAN



ELEVATION

NOTES

1. FOR TEMPORARY SHORING DETAILS SEE SHEETS 9/47 THRU 12/47.
2. FOR FORWARD ABUTMENT DETAILS SEE SHEETS 23/47, 24/47 AND 25/47.
3. FOR ADDITIONAL MSE WALL DETAILS SEE SHEETS 17/47 AND 19/47.
4. FOR AESTHETIC DETAILS, SEE SHEET 15/47.
5. FOR LIST OF ABBREVIATIONS, SEE SHEET 3/47.

DESIGN AGENCY: **ARCADIS**
 ARCADIS G&M of Ohio, Inc.
 100 Superior Avenue, Suite 1250 Cleveland, Ohio 44114
 Tel: 216-781-6177 Fax: 216-781-6243 www.arcadis-us.com

DESIGNED	RBB	CHECKED	SKS
DRAWN	MPB	REVISED	
REVIEWED	CMD	DATE	4/07
STRUCTURE FILE NUMBER	4300823		

LAK-2-3.32
PID 13486

MSE WALL DETAILS - FORWARD ABUTMENT
 BRIDGE NO. LAK-2-0542
 LOST NATION ROAD OVER STATE ROUTE 2

18 / 47

1564
1679