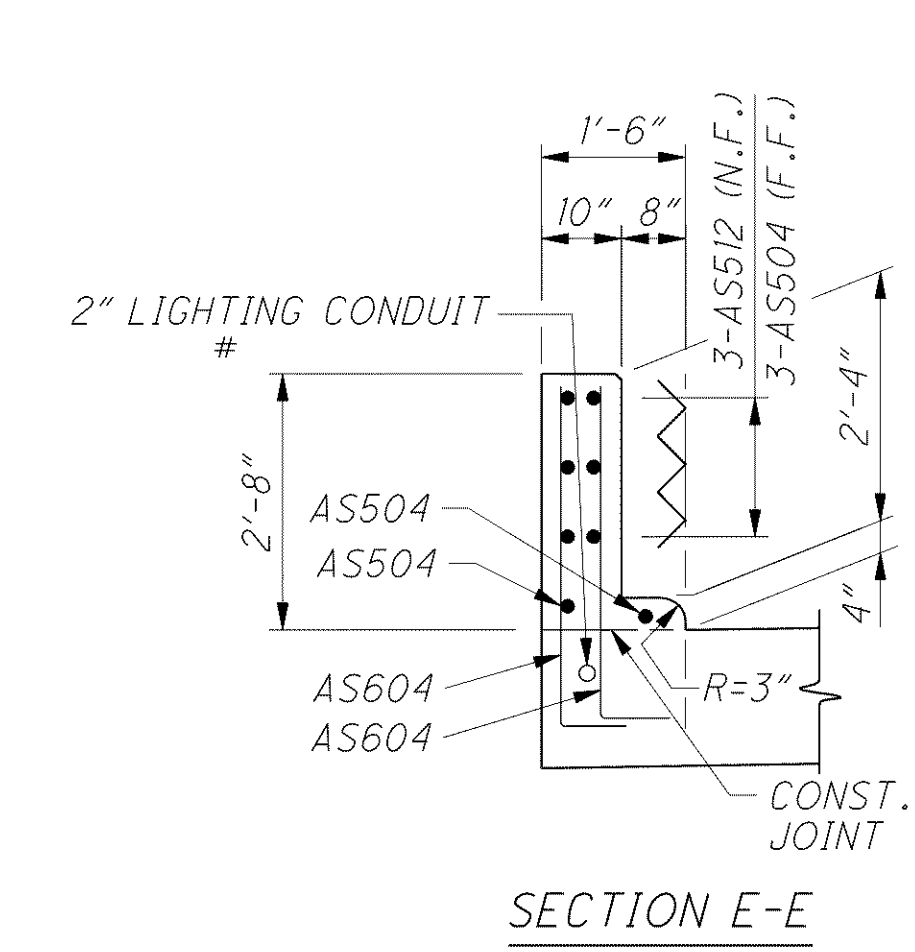
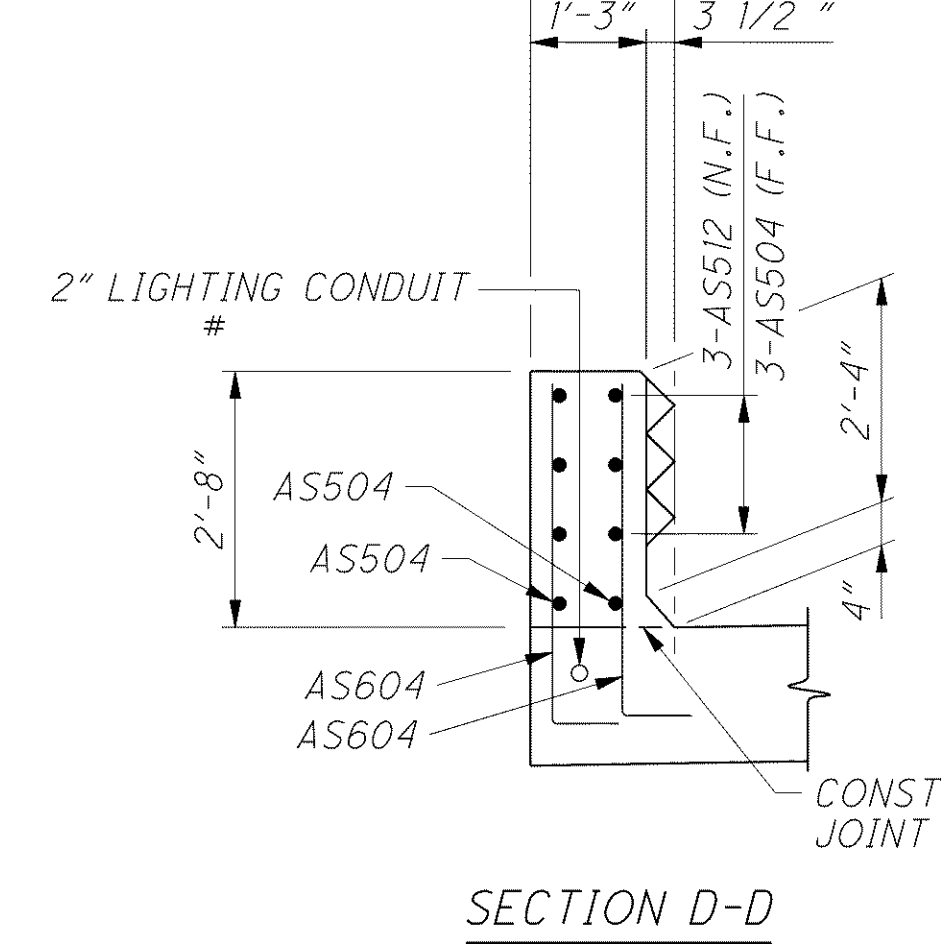
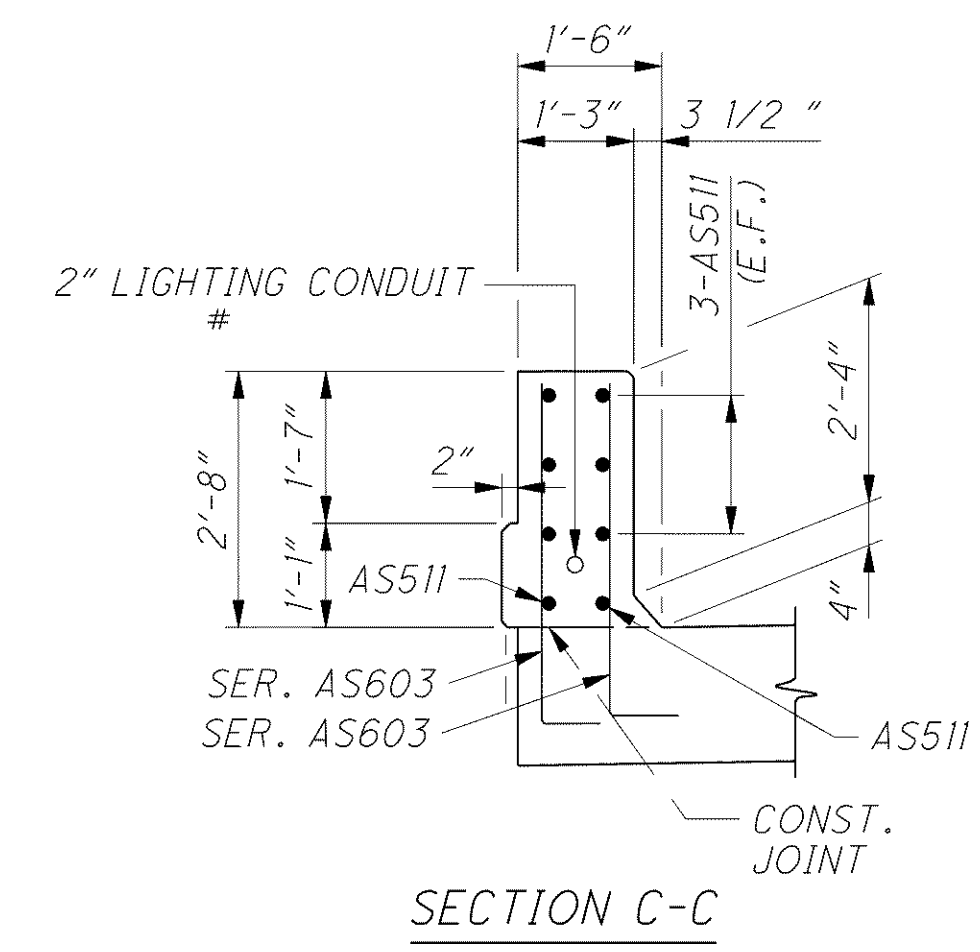
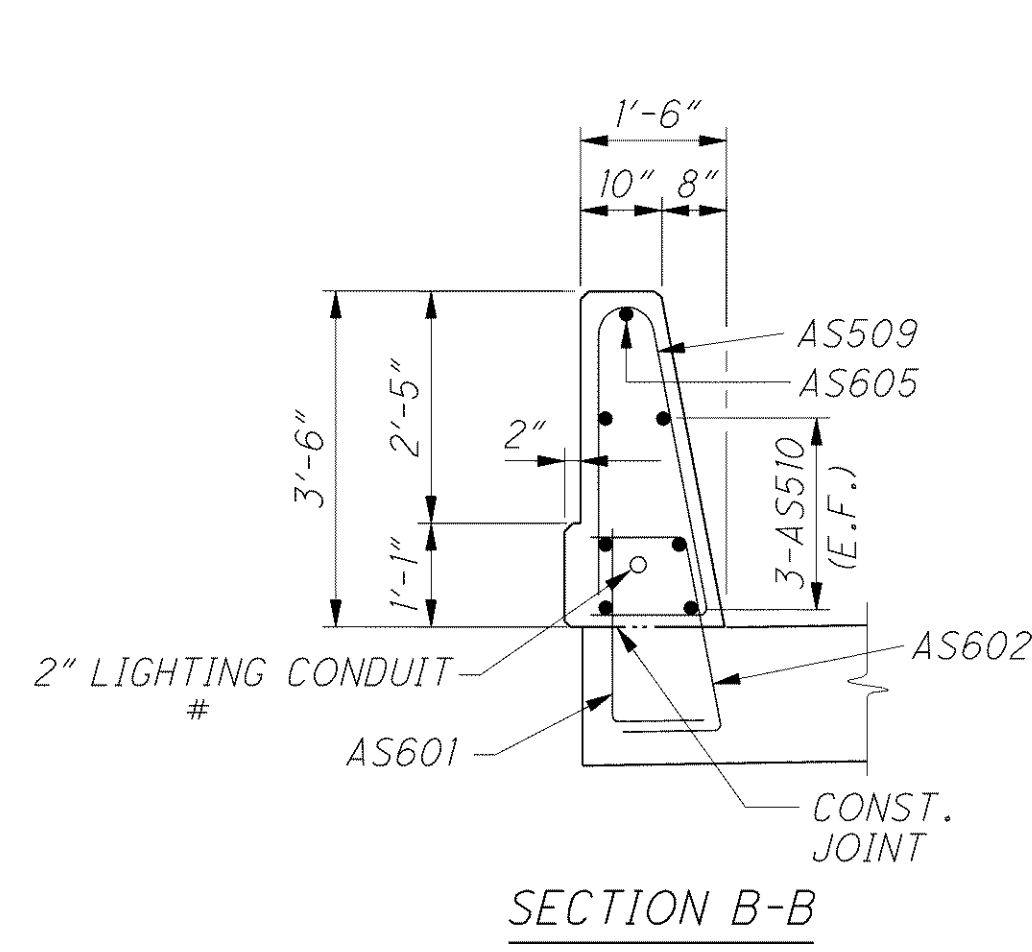
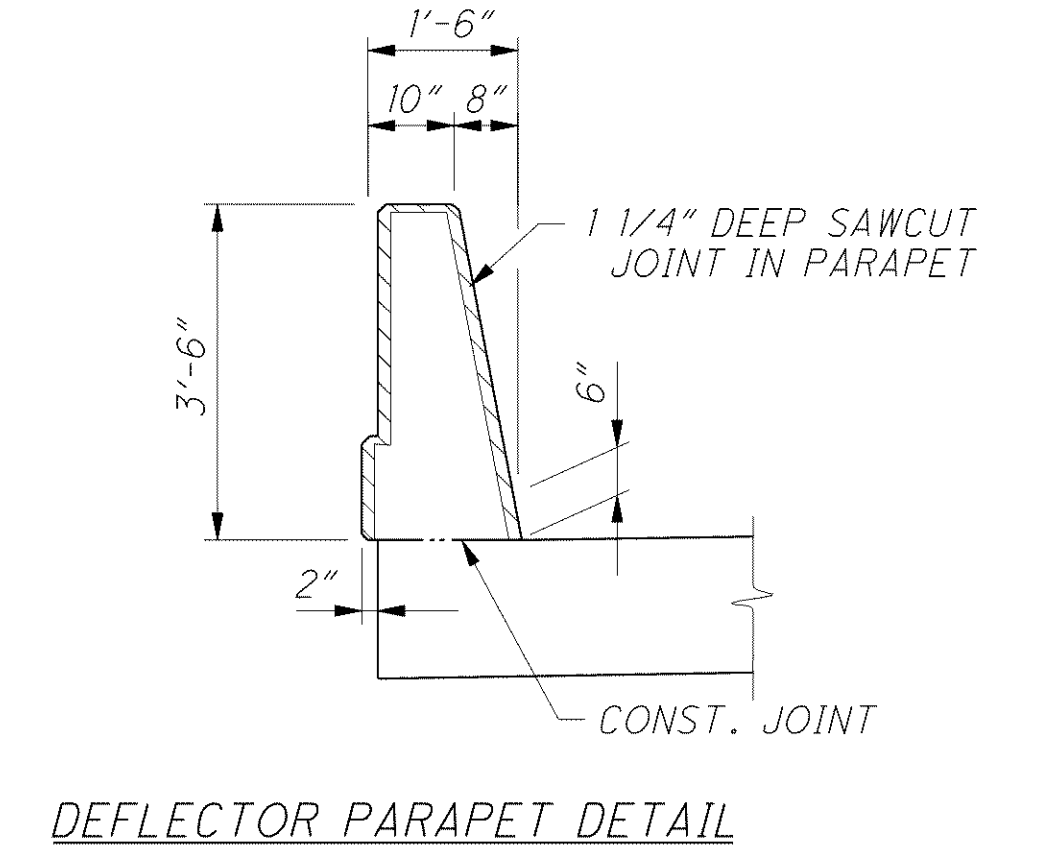
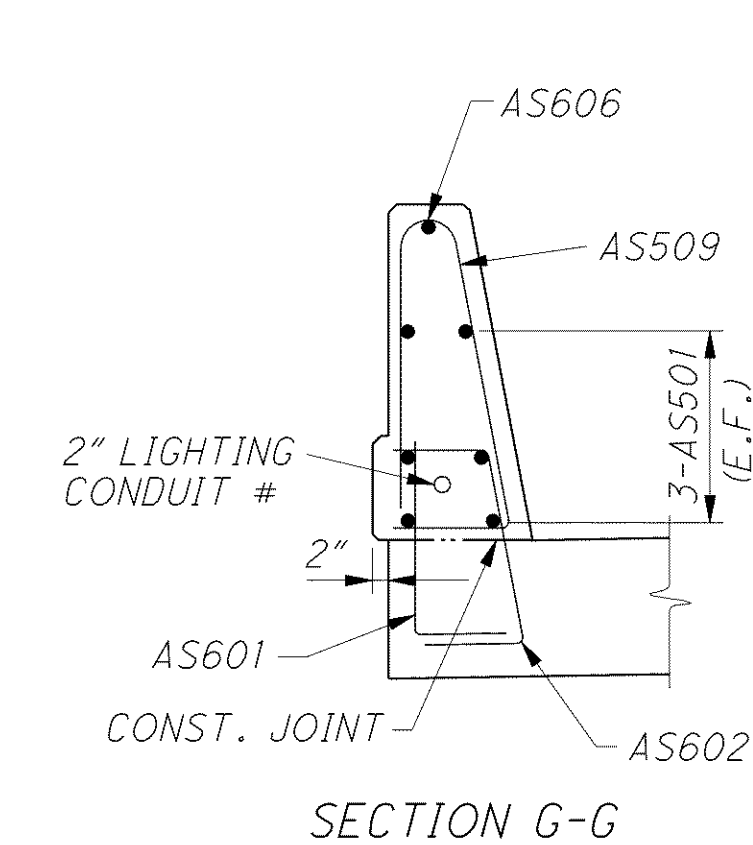
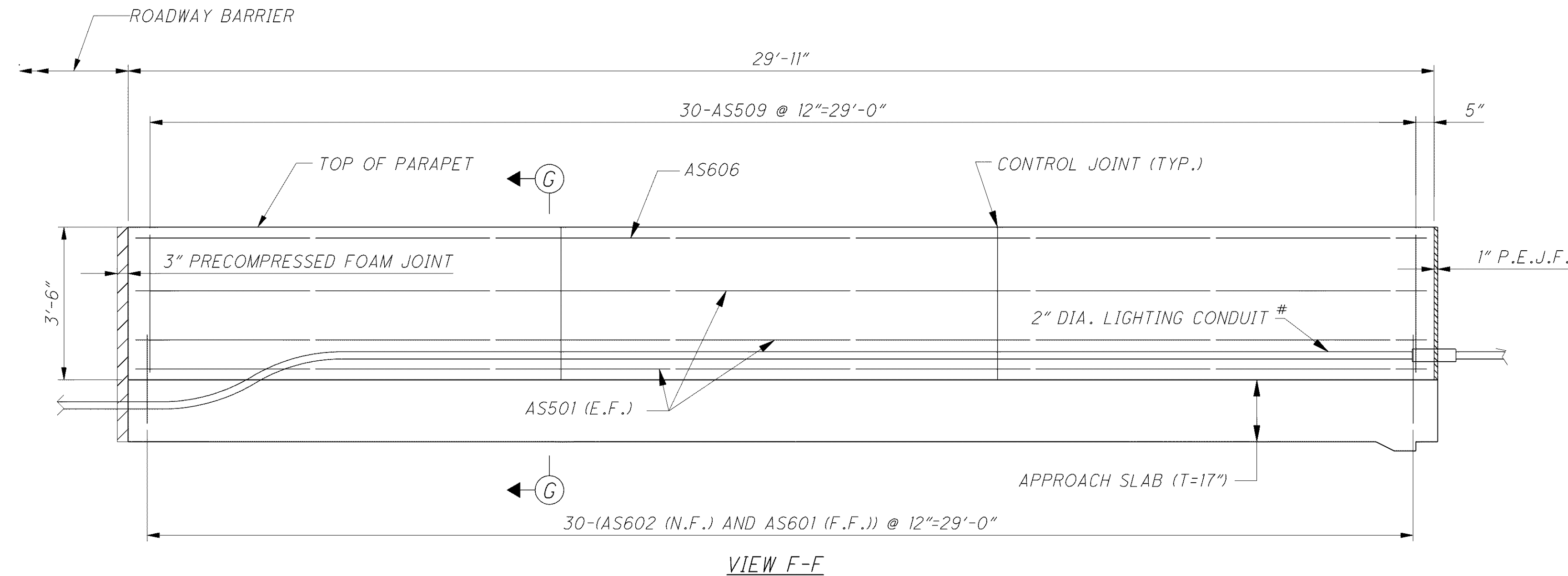
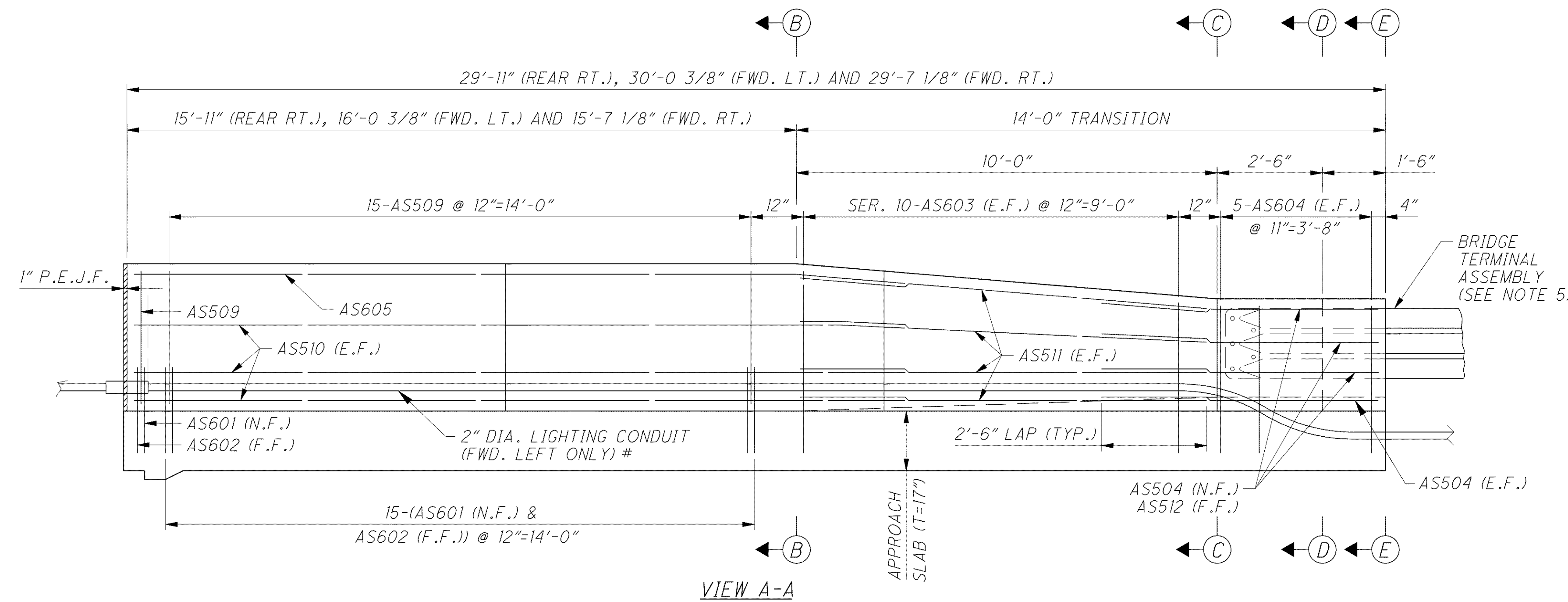


o:\project\c000048a001\drawing\lak\13486\bridge\ok002\sheets\02_0530p\ok002.dgn 6/23/2008 6:21:59 PM troxberry



LEGEND

INCLUDED WITH LIGHTING QUANTITIES FOR PAYMENT

- NOTES**
1. MINIMUM BAR LAP IS AS FOLLOWS: #5 BARS = 41"
 2. FOR ADDITIONAL SINGLE SLOPE DEFLECTOR PARAPET TYPE DETAILS SEE O.D.O.T. STANDARD DRAWING SBR-1-91.
 3. FOR ADDITIONAL APPROACH SLAB DETAILS SEE SHEET [24|28] AND O.D.O.T. STANDARD DRAWING AS-1-81.
 4. FOR PARAPET CONTROL JOINT SPACING SEE SHEET [21|28].
 5. FOR BRIDGE TERMINAL ASSEMBLIES SEE ROADWAY STANDARD DRAWINGS GR-3.1 AND GR-3.2. INCLUDE WITH ROADWAY QUANTITIES FOR PAYMENT.
 6. FOR LEGEND OF ABBREVIATIONS SEE SHEET [3|28].

APPROACH SLAB DETAILS
BRIDGE NO. LAK-2-0530 EN
RAMP D OVER CHAGRIN RIVER

LAK-2-3.32
PID 13486

DESIGNED	MVD	CHECKED	FJG
DRAWN	MPB	REVISED	
REVIEWED	CMD	STRUCTURE FILE NUMBER	4300750
DATE	12/07		