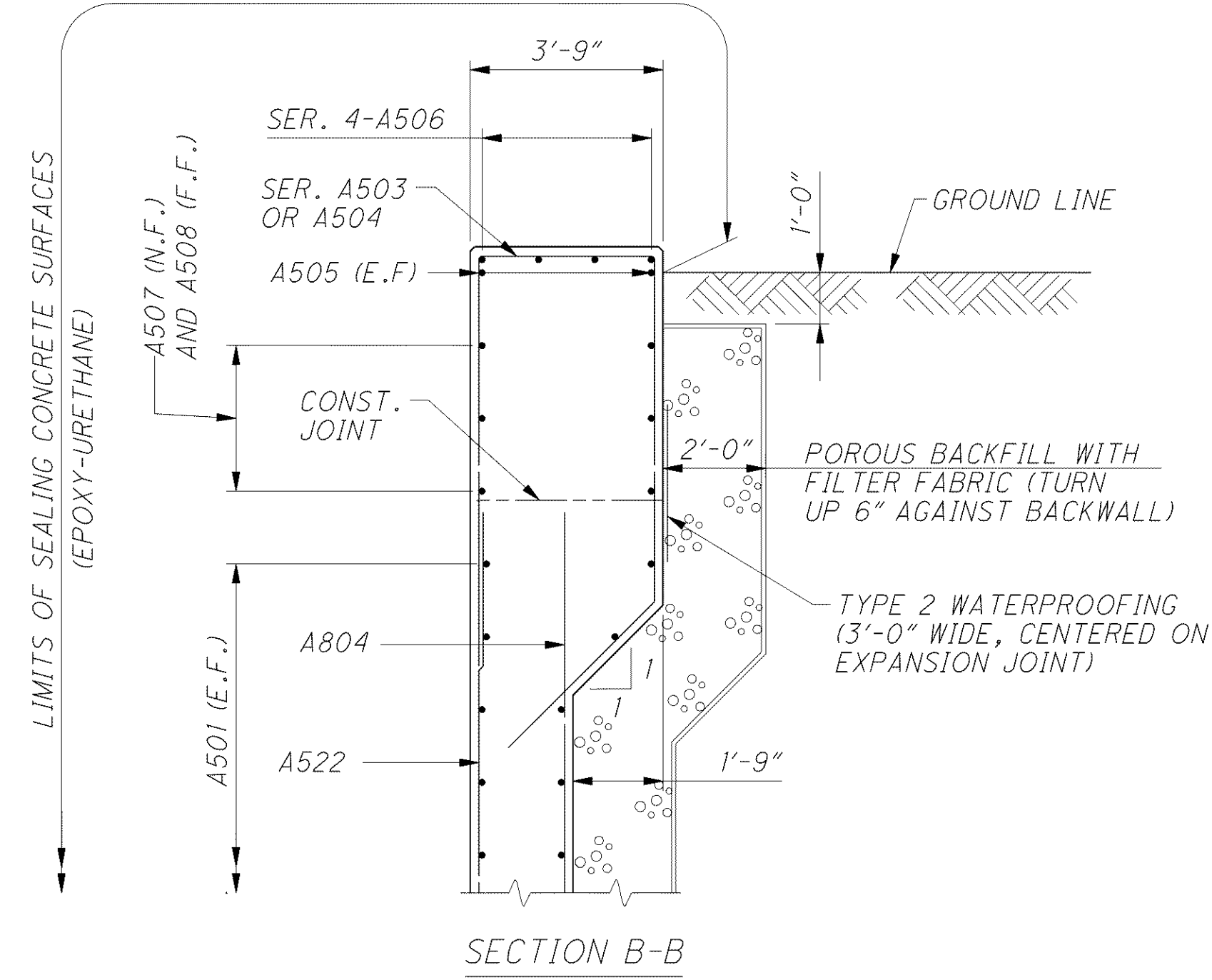
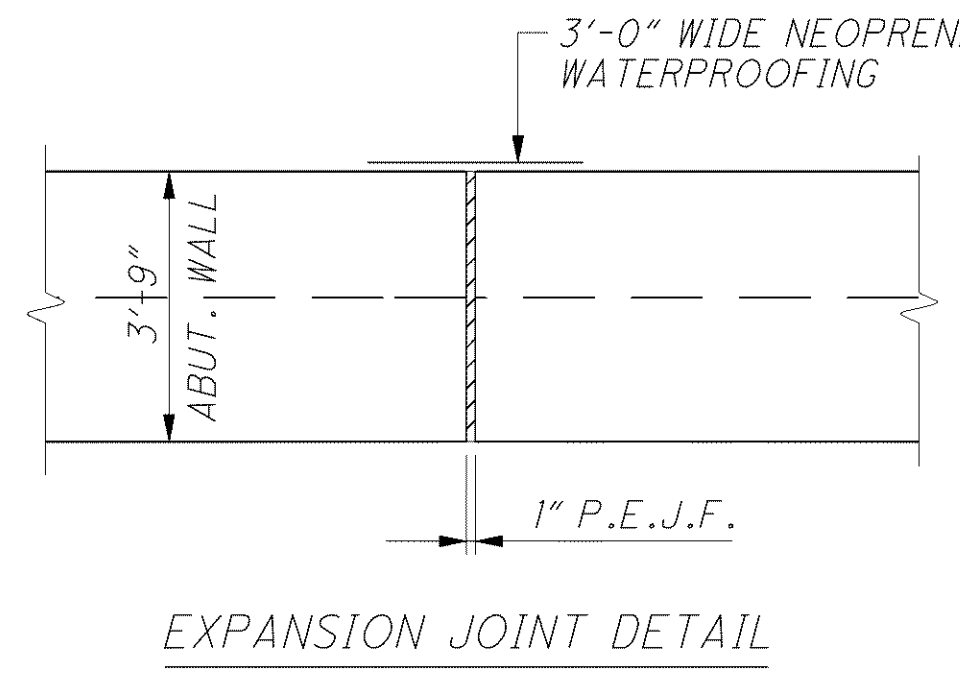
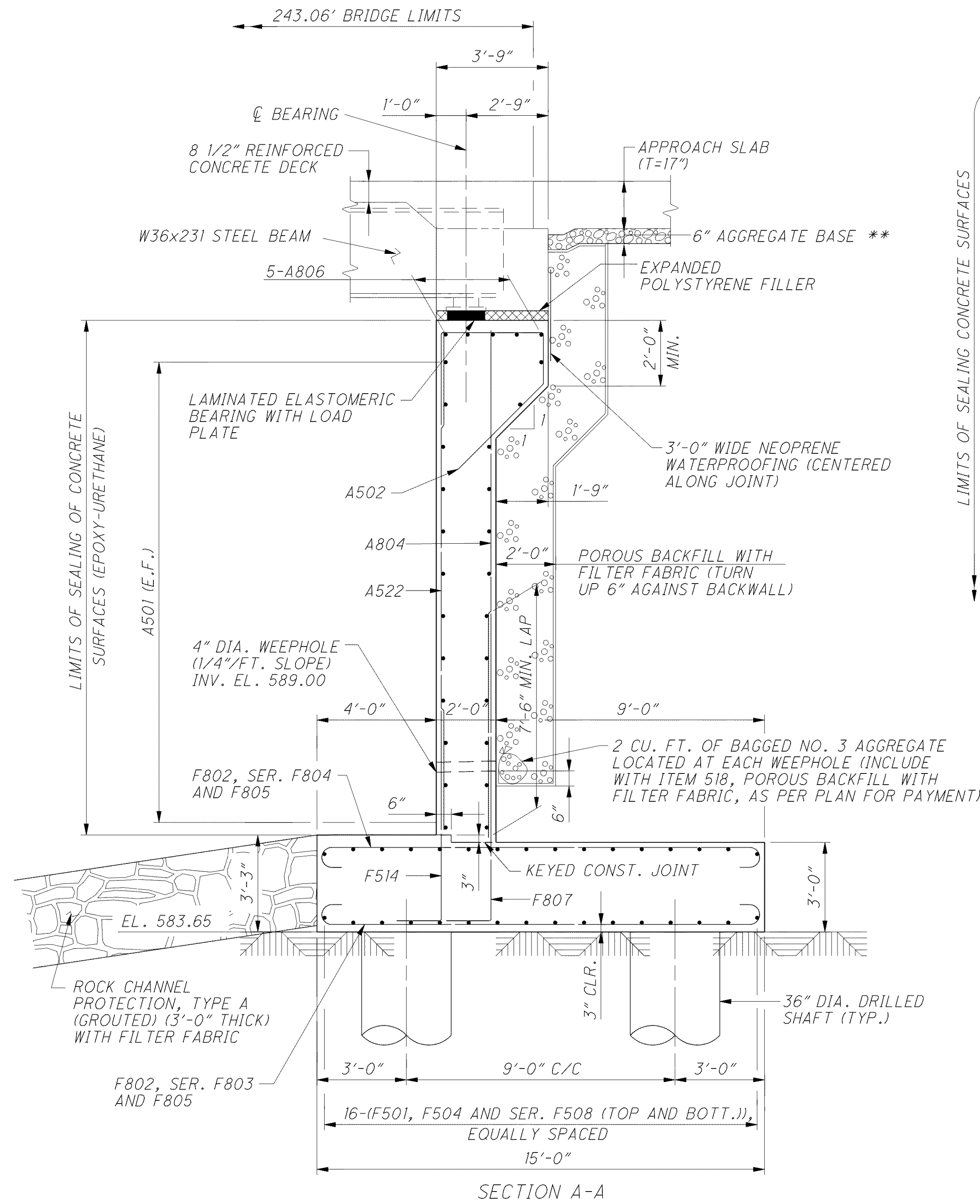
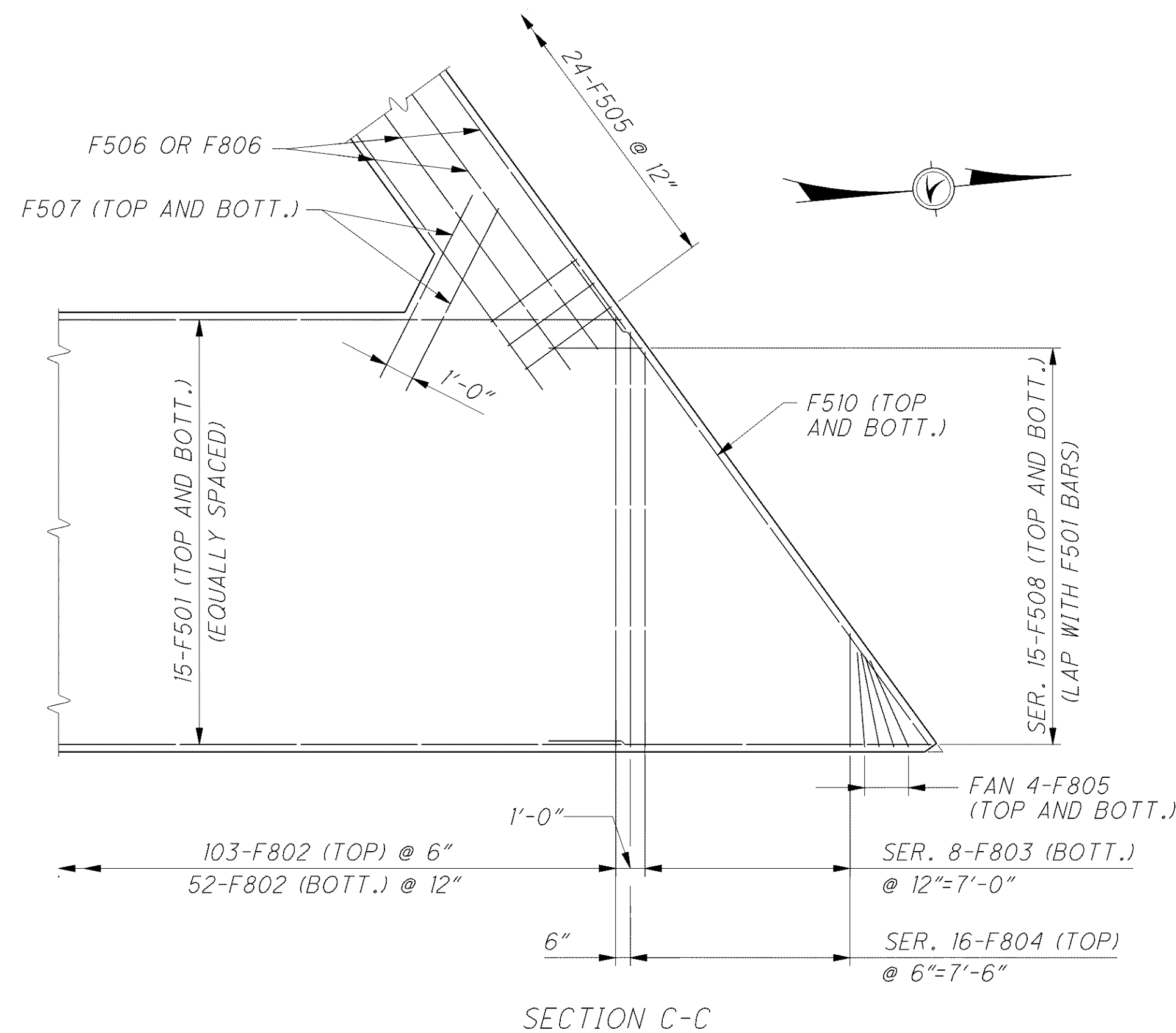


o:\project\c000048a001\drawing\lak\13486\bridge\lak002_sheets\02_0530PAR002.dgn 6/23/2008 6:19:45 PM troxberry



** INCLUDE WITH ROADWAY QUANTITIES FOR PAYMENT.



NOTES

1. MINIMUM BAR LAPS ARE AS FOLLOWS:
#5 BARS = 41" #8 BARS = 87"
2. PROVIDE A 1" CHAMFER ON ALL EXPOSED CONCRETE CORNERS.
3. POROUS BACKFILL WITH FILTER FABRIC, TWO (2) FEET THICK (MIN.) SHALL EXTEND UP TO THE PLANE OF THE SUBGRADE, TO ONE (1) FOOT BELOW THE EMBANKMENT SURFACE OR TO THE BOTTOM OF THE APPROACH SLAB, AND Laterally TO THE ENDS OF THE WINGWALLS. FILTER FABRIC SHALL CONFORM WITH 712.09, TYPE A. FILTER FABRIC IS INCLUDED WITH POROUS BACKFILL FOR PAYMENT.
4. FOR REAR ABUTMENT DIAPHRAGM DETAILS SEE SHEET 17 | 28 .
5. FOR BEARING DETAILS SEE SHEET 14 | 28 .
6. FOR REAR ABUTMENT PLAN AND ELEVATION SEE SHEET 7 | 56 .
7. FOR LEGEND OF ABBREVIATIONS SEE SHEET 3 | 28 .
8. WINGWALL AND ABUTMENT CONCRETE ABOVE THE BEAM SEAT SHALL NOT BE PLACED UNTIL AFTER THE DECK SLAB AND ABUTMENT DIAPHRAGM HAVE BEEN PLACED AND PROPERLY CURED.
9. FOR ABUTMENT FOUNDATION PLAN SEE SHEET 6 | 28 .

DESIGN AGENCY
ARCADIS
ARCADIS U.S., Inc.
1100 Superior Avenue, Suite 1250 Cleveland, Ohio 44114
Tel: 216-781-6177 Fax: 216-781-6243 www.arcadis-us.com

DESIGNED	F JG	CHECKED	MWD
DRAWN	CAF	REVISED	
REVIEWED	RBB	STRUCTURE FILE NUMBER	4300750
DATE	12/07		

REAR ABUTMENT DETAILS
BRIDGE NO. LAK-2-0530 EN
RAMP D OVER CHAGRIN RIVER

LAK-2-3-32
PID 13486

8 / 28

1526
1679