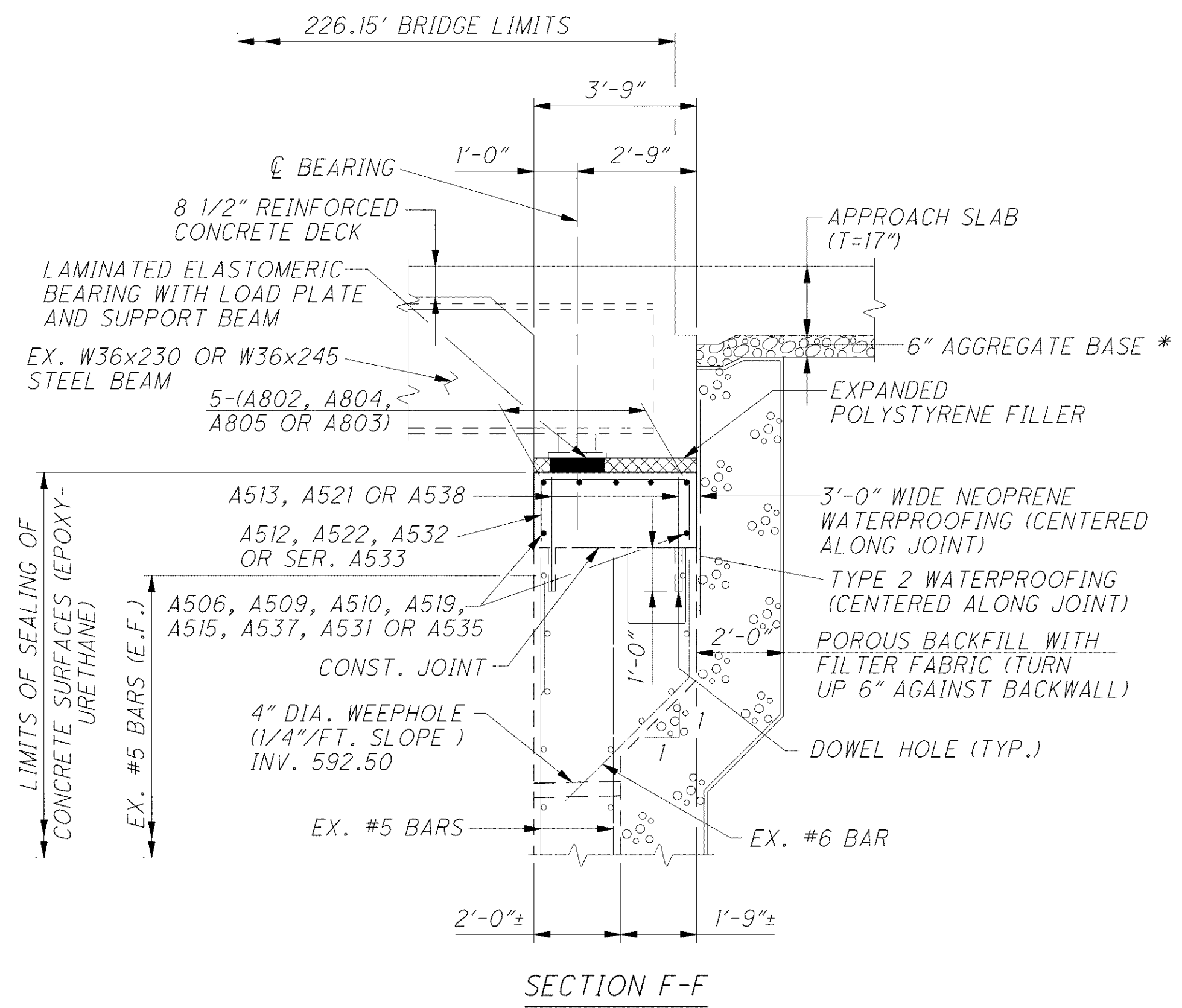
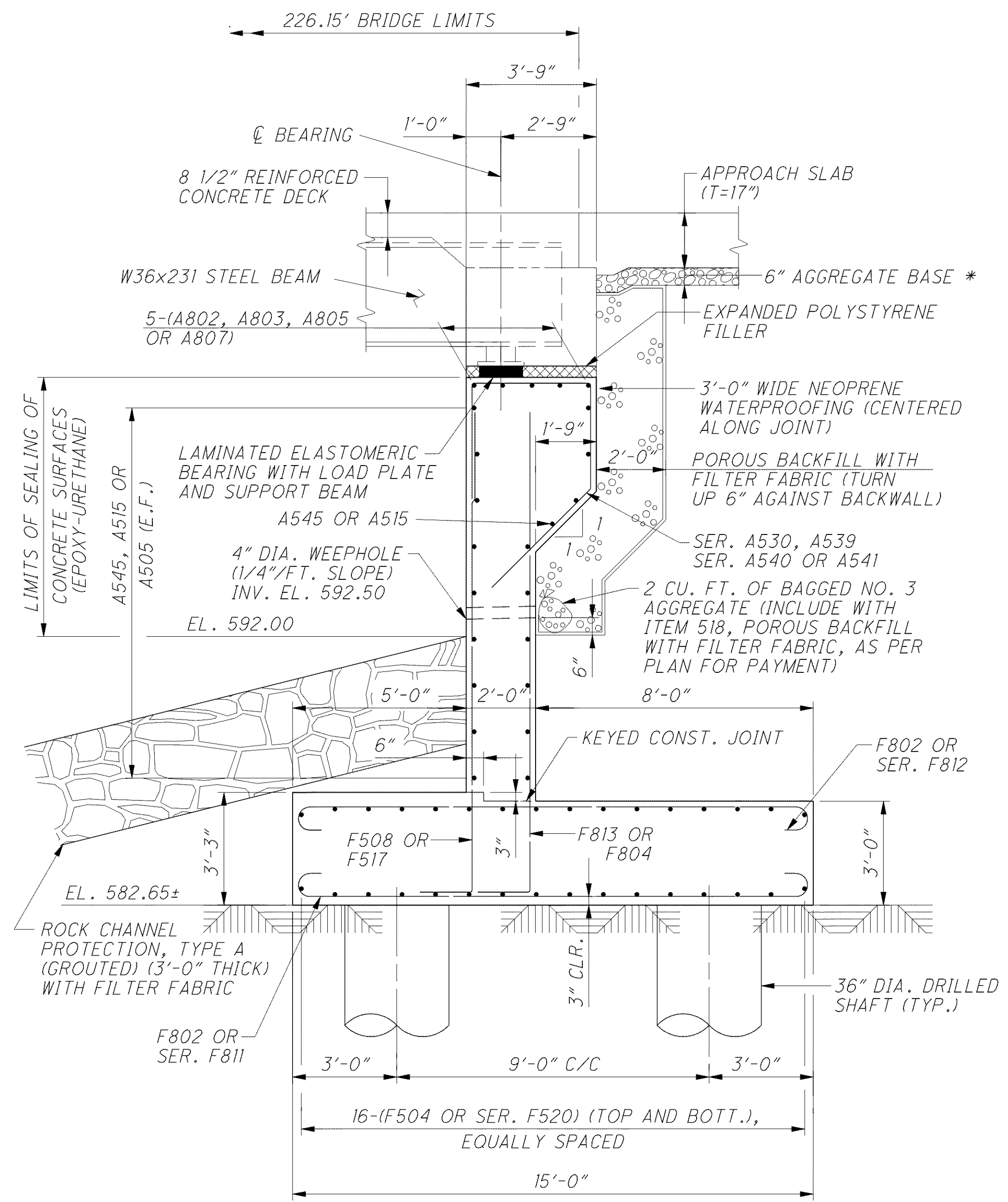
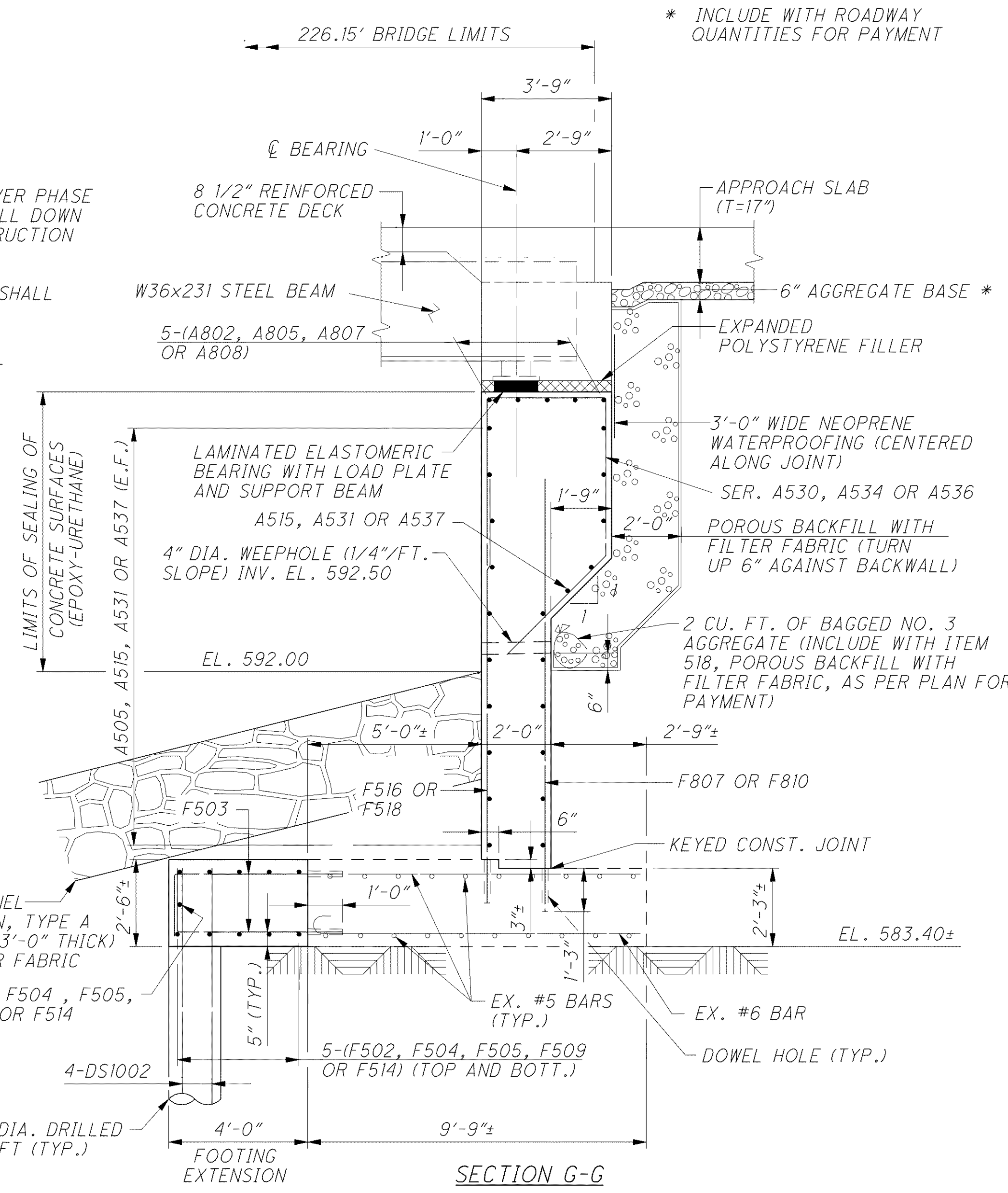
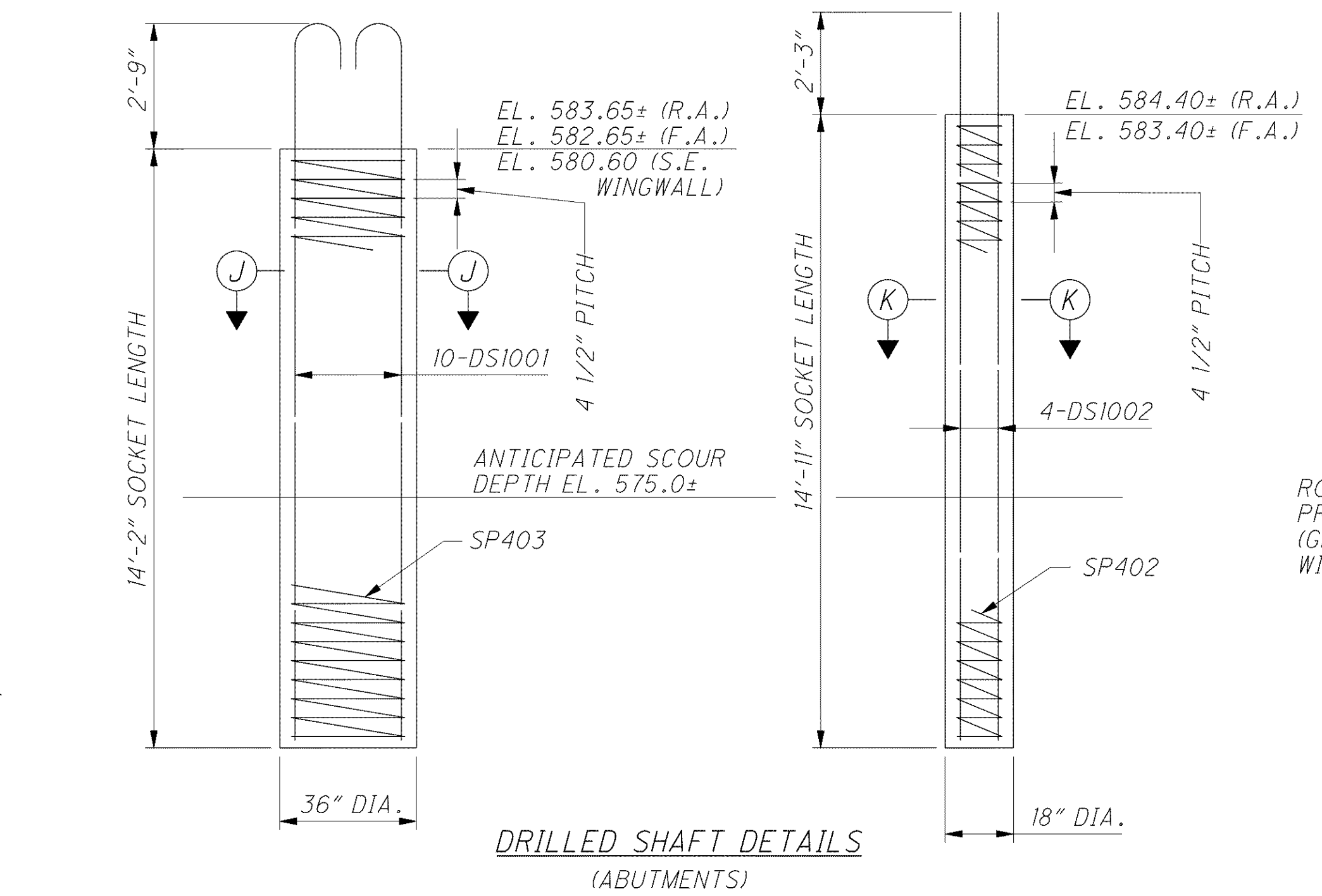
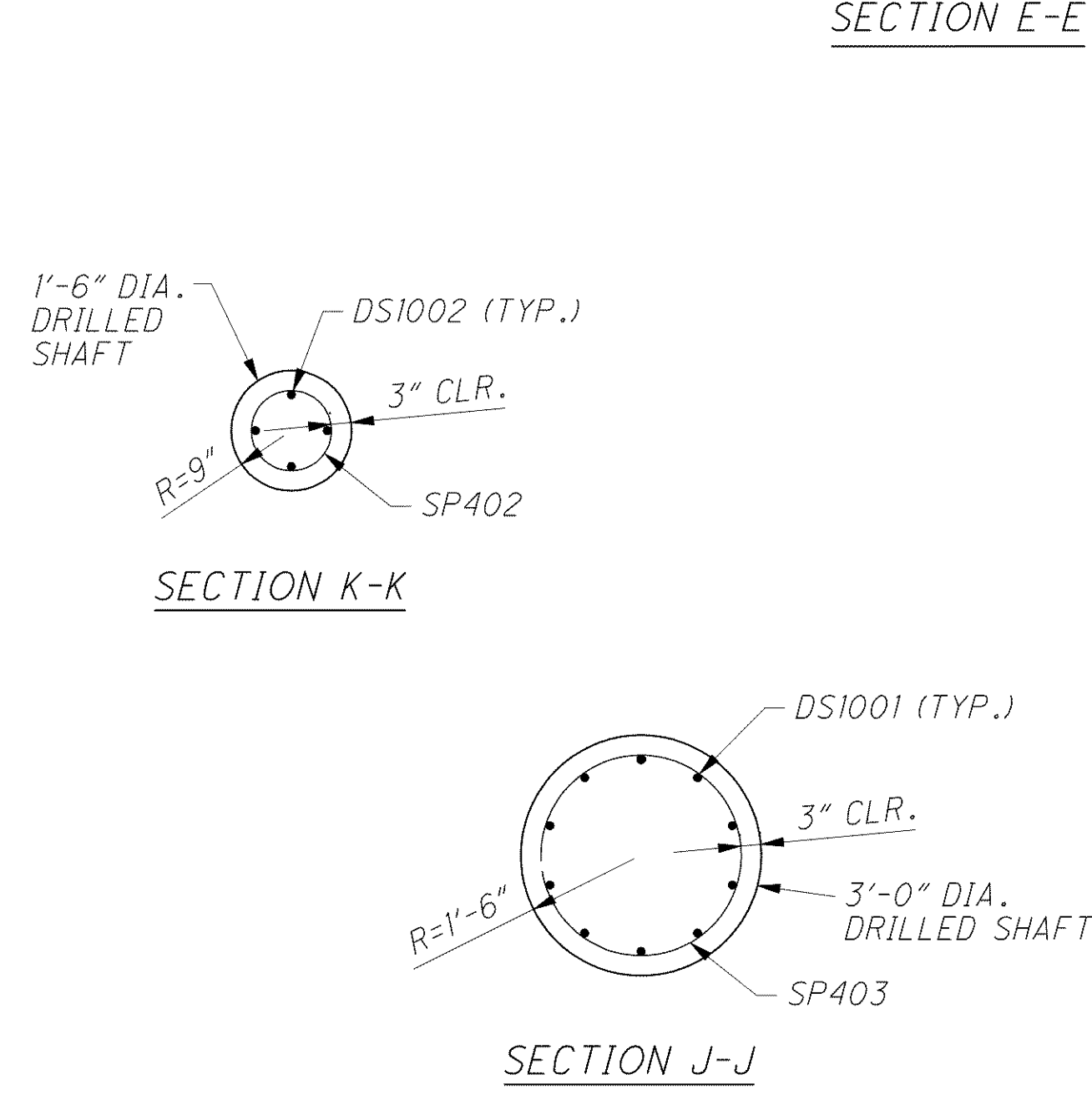


C:\Project\CV000048A001\Drawing\LAK\13486\bridge\LAK002_0530L_sheets\002_0530CAF003.dgn 6/24/2008 5:05:40 PM mbechter



- TYPE 2 WATERPROOFING SHALL BE CENTERED VERTICALLY OVER PHASE CONSTRUCTION JOINTS AND EXTENDED FROM THE TOP OF WALL DOWN TO THE TOP OF FOOTING AND HORIZONTALLY ALONG CONSTRUCTION JOINTS.
- WINGWALL AND ABUTMENT CONCRETE ABOVE THE BEAM SEAT SHALL NOT BE PLACED UNTIL AFTER THE DECK SLAB AND ABUTMENT DIAPHRAGM HAVE BEEN PLACED AND PROPERLY CURED.
- ALL DOWEL BARS SHALL HAVE A 4" MINIMUM EDGE CLEARANCE UNLESS NOTED.
- FOR FOUNDATION PLAN SEE SHEET 15 | 56 .
- DRILLED SHAFT REINFORCEMENT SHALL BE INCLUDED WITH RESPECTIVE ITEM 524, DRILLED SHAFTS FOR PAYMENT.



- NOTES
- MINIMUM BAR LAPS ARE AS FOLLOWS:
#5 BARS = 38" #8 BARS = 87"
 - POROUS BACKFILL WITH FILTER FABRIC, TWO (2) FEET THICK (MIN.) SHALL EXTEND UP TO THE PLANE OF THE SUBGRADE, TO ONE (1) FOOT BELOW THE EMBANKMENT SURFACE OR TO THE BOTTOM OF THE APPROACH SLAB, AND Laterally TO THE ENDS OF THE WINGWALLS. PLACE TWO CUBIC FEET OF BAGGED NO. 3 AGGREGATE AT EACH WEEP-HOLE. FILTER FABRIC SHALL CONFORM WITH 712.09, TYPE A. BAGGED AGGREGATE AND FILTER FABRIC IS INCLUDED WITH POROUS BACKFILL FOR PAYMENT.
 - PROVIDE A 1" CHAMFER ON THE EDGE OF ALL EXPOSED CONCRETE.
 - FOR FORWARD ABUTMENT DIAPHRAGM AND ADDITIONAL SUPERSTRUCTURE DETAILS SEE SHEETS 37 | 56 AND 38 | 56 .
 - FOR BEARING DETAILS SEE SHEET 28 | 56 .
 - FOR FORWARD ABUTMENT PLAN AND ELEVATION SEE SHEETS 20 | 56 AND 21 | 56 .
 - EXPANDED POLYSTYRENE FILLER SHALL BE INCLUDED WITH ITEM 511, CLASS HP CONCRETE, SUBSTRUCTURE, AS PER PLAN, FOR PAYMENT.
 - FOR LEGEND OF ABBREVIATIONS SEE SHEET 4 | 56 .

* INCLUDE WITH ROADWAY QUANTITIES FOR PAYMENT