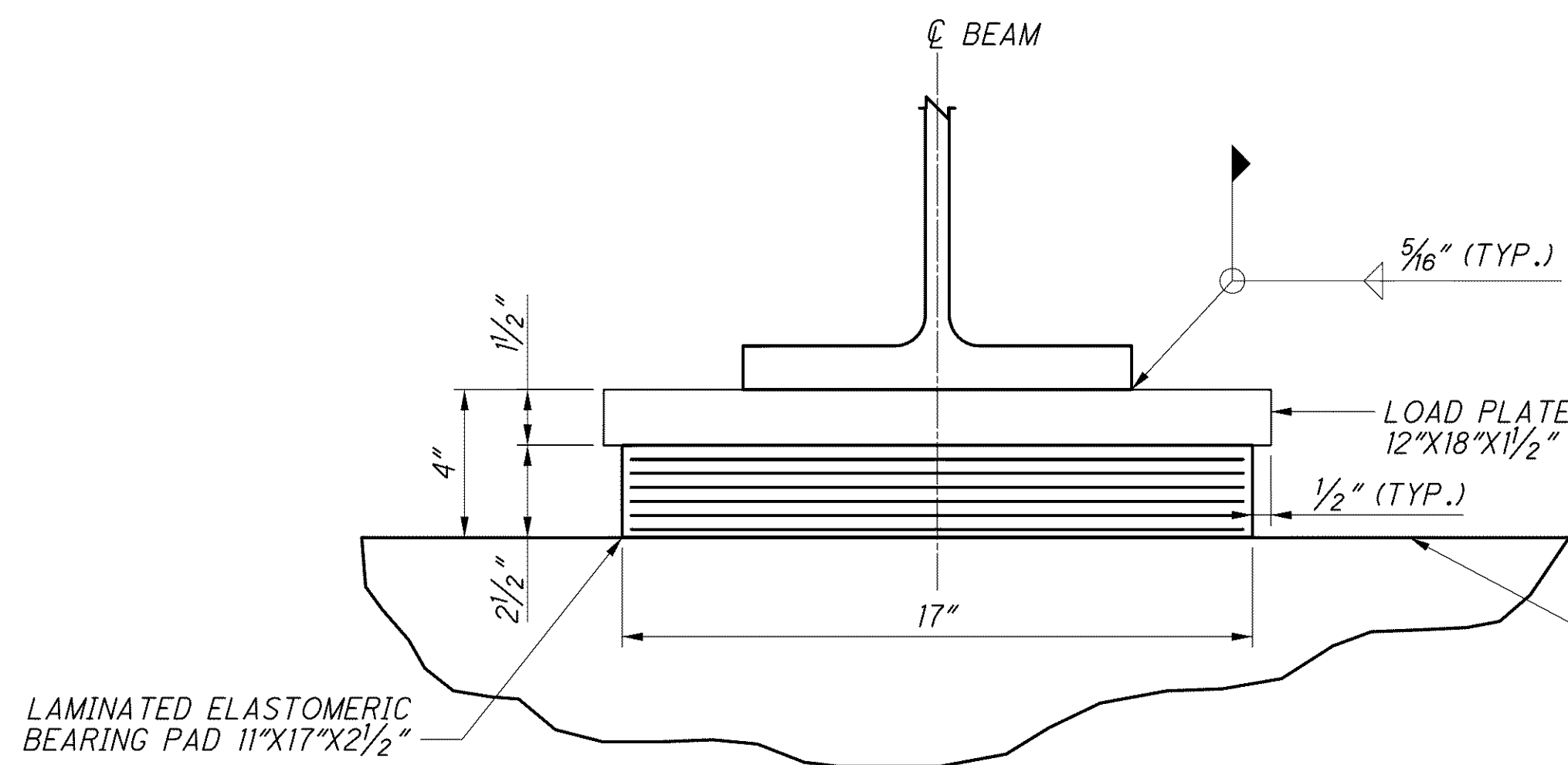
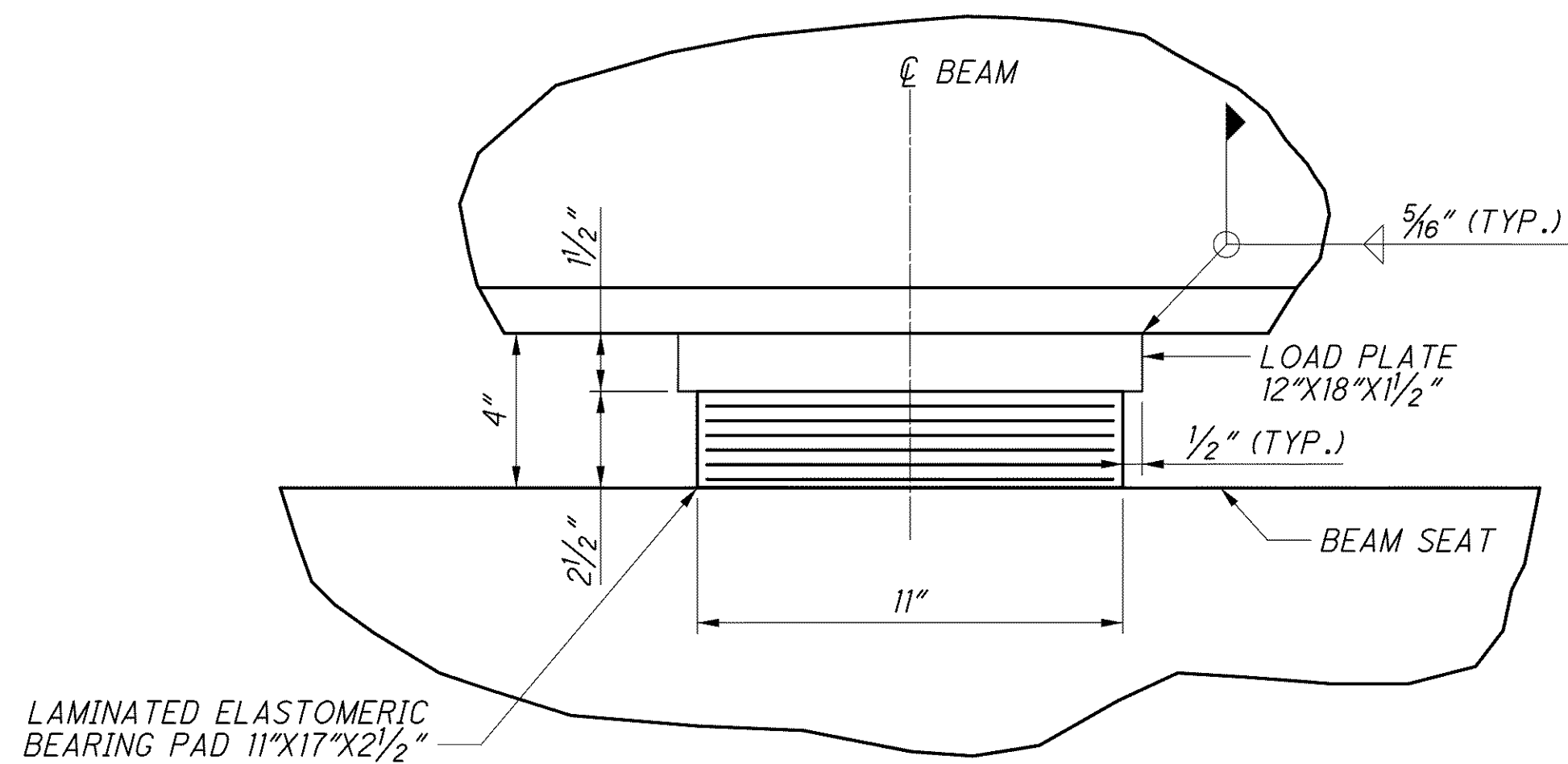


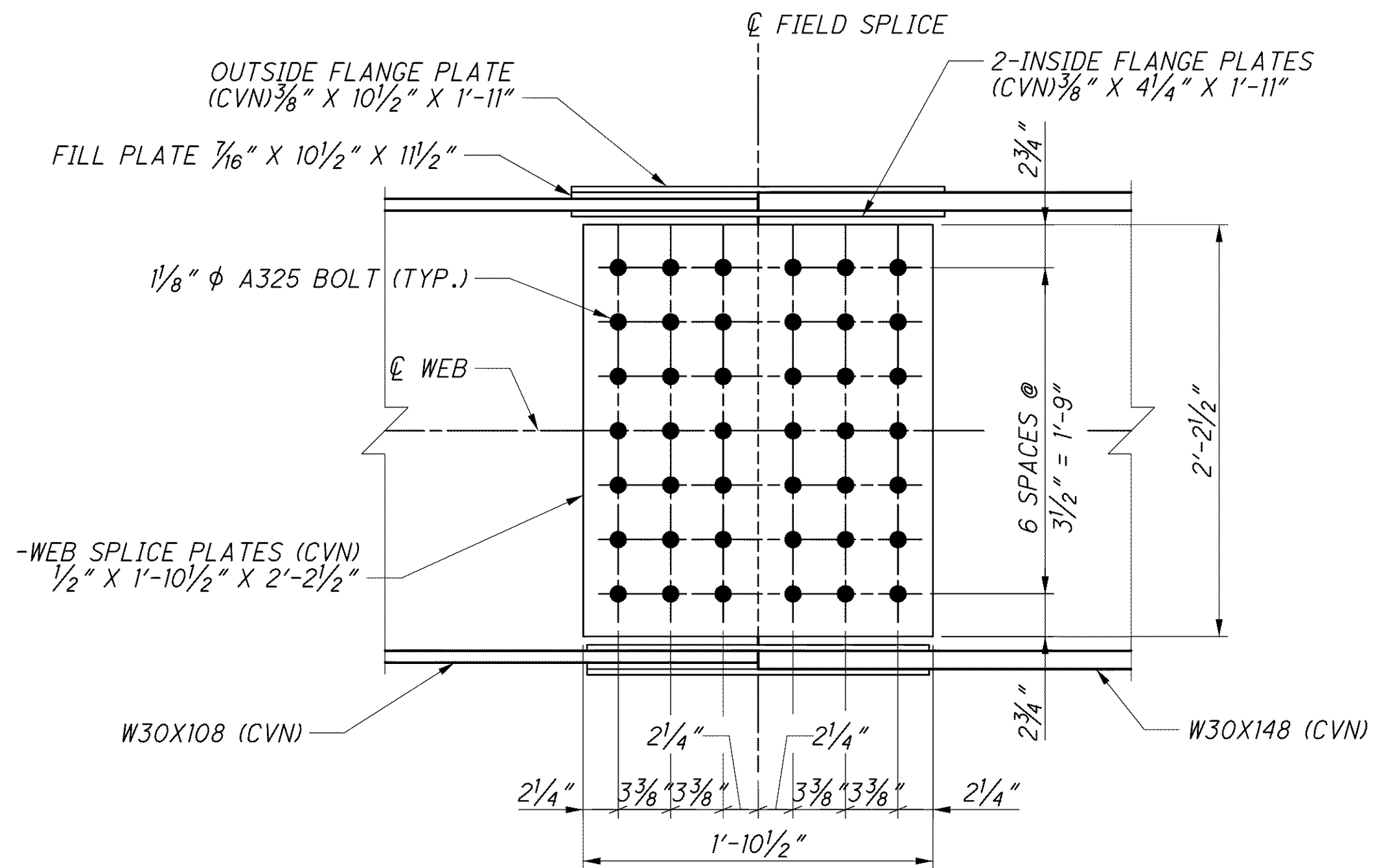
PLAN VIEW-PIER BEARING



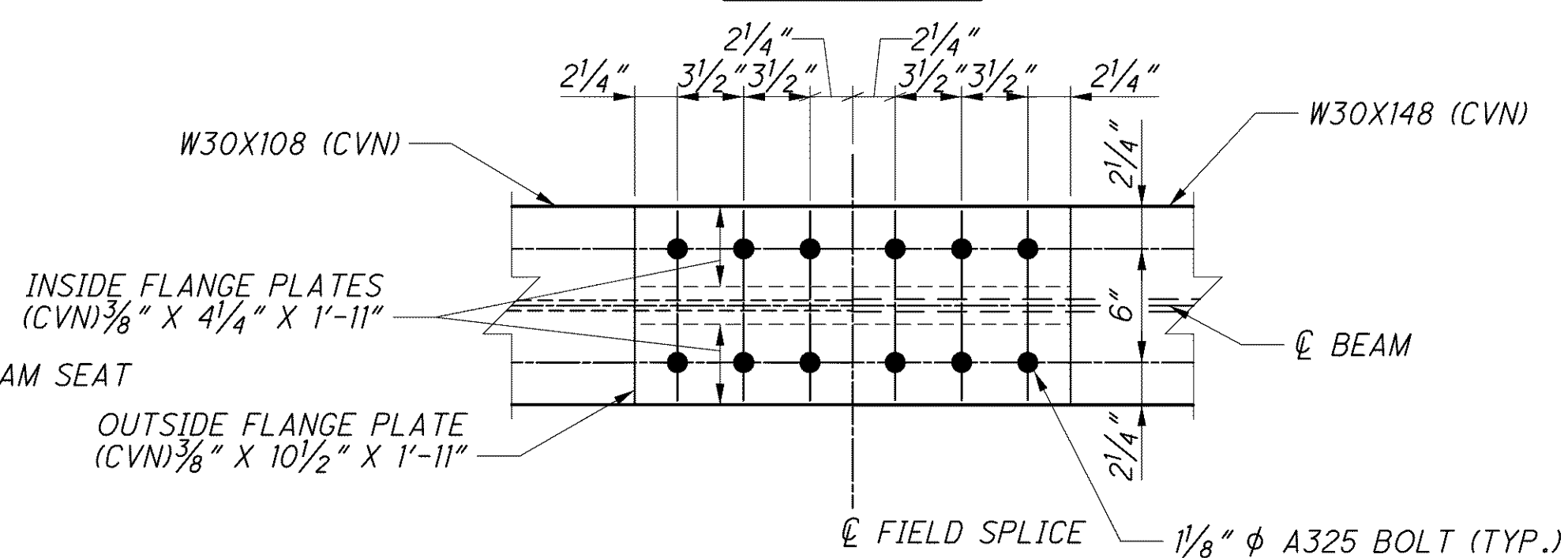
SECTION A-A



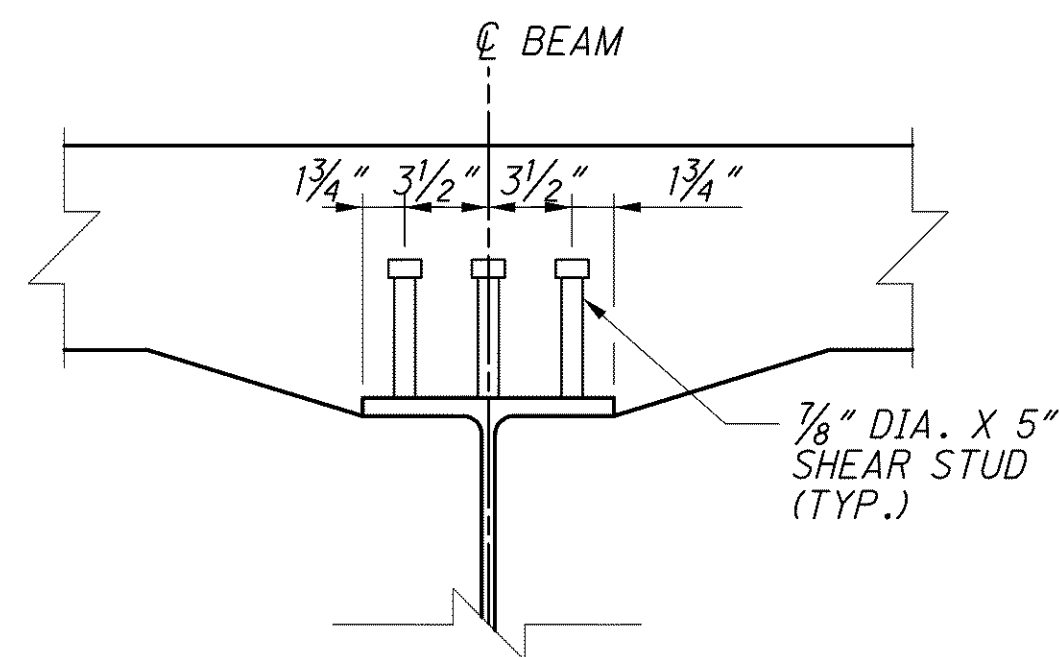
SECTION B-B



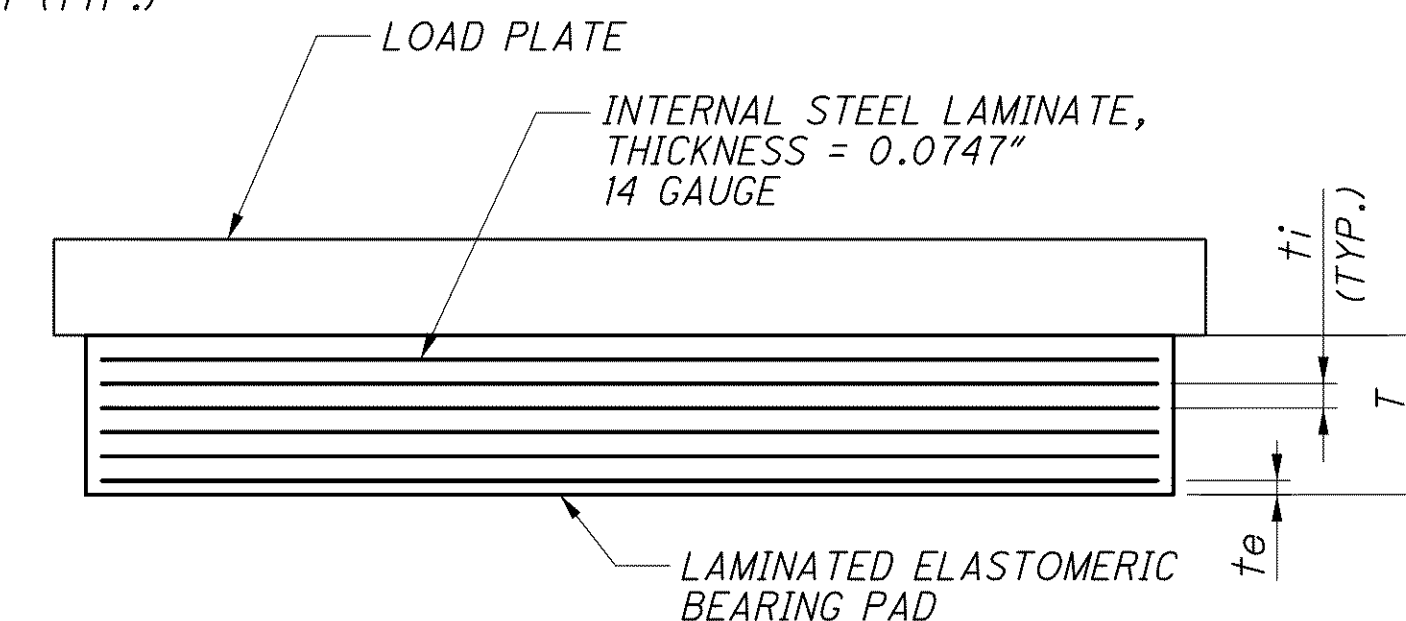
WEB SPLICE



FLANGE SPLICE



SHEAR STUD CONNECTION DETAIL



BEARING PAD DETAIL

BEARING DATA								
LOCATION	SIZE		(THICKNESS) "DIM. T"	t <sub>i</sub>	t <sub>e</sub>	NUMBER OF t <sub>i</sub>	NUMBER OF t <sub>e</sub>	NUMBER OF STEEL LAMINATES
	L	W						
PIERS	11"	17"	2.49"	0.31"	0.18"	6	1	6

BEARING LOAD DATA			
LOCATION	DEAD LOAD (KIPS/PAD)	LIVE LOAD (W/O IMPACT) (KIPS/PAD)	DESIGN LOAD (KIPS/PAD)
PIERS	100.6	81.2	181.7

**NOTES:**

1. WELDING: CONTROL WELDING SO THAT THE PLATE TEMPERATURE AT THE ELASTOMER BONDED SURFACE DOES NOT EXCEED 300 DEGREES F AS DETERMINED BY USE OF PYROMETRIC STICKS OR OTHER TEMPERATURE MONITORING DEVICES.
2. ELASTOMERIC BEARINGS: THE ELASTOMER SHALL HAVE A HARDNESS OF 50 DUROMETER. THE BEARINGS WERE DESIGNED UNDER DIVISION I, SECTION 14.6.6 (METHOD A) OF THE AASHTO STANDARD SPECIFICATIONS FOR HIGHWAY BRIDGES.
3. ALL MATERIALS, LABOR AND INCIDENTALS NECESSARY TO FURNISH AND INSTALL LAMINATED ELASTOMERIC BEARINGS AND LOAD PLATES SHALL BE INCLUDED IN ITEM 516, ELASTOMERIC BEARING WITH INTERNAL LAMINATES AND LOAD PLATE, AS PER PLAN FOR PAYMENT.
4. CVN: WHERE A SHAPE OR PLATE IS DESIGNATED (CVN), FURNISH MATERIAL THAT MEETS THE MINIMUM NOTCH TOUGHNESS REQUIREMENTS AS SPECIFIED IN 711.01.
5. HIGH STRENGTH BOLTS SHALL BE 1/8" DIAMETER A325, TYPE I UNLESS OTHERWISE NOTED.
6. FOR LIST OF ABBREVIATIONS SEE SHEET 4/70.
7. STEEL FOR LOAD PLATES SHALL BE ASTM A709 GRADE 50 AND SHALL BE SHOP PAINTED WITH INORGANIC ZINC PRIMER AS SPECIFIED IN CMS 513.27. PAYMENT IS INCLUDED IN THE UNIT PRICE BID FOR EACH BEARING. APPLY PAINT TO THE EXPOSED STEEL LOAD PLATES IN ACCORDANCE WITH CMS 514.

j:\LAK\13486\bridge\LAK002\_0486C\sheets\02\_0486CBR001.dgn 03-JUL-2008 1:47PM lintn