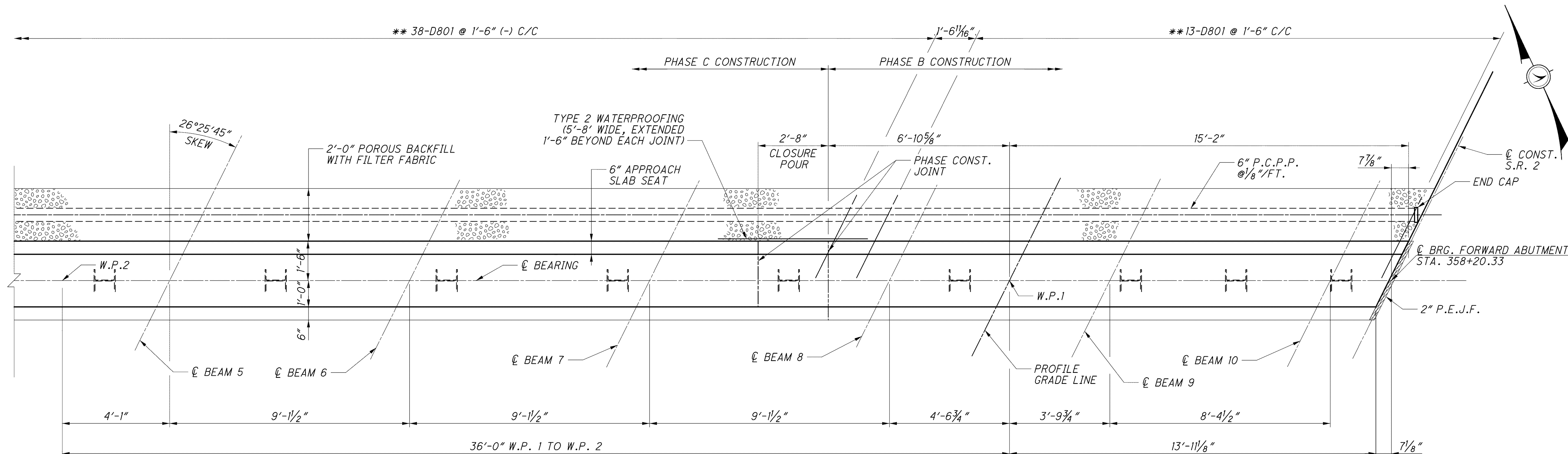


** 38-D801 @ 1'-6" (-) C/C

** 13-D801 @ 1'-6" C/C



NOTES:

1. ABUTMENT DIAPHRAGM CONCRETE, STEEL SUPERSTRUCTURE, PHASED CONSTRUCTION: PLACE THE CONCRETE IN THE ABUTMENT DIAPHRAGM ENCASEING STRUCTURAL STEEL MEMBERS OF AN INDIVIDUAL PHASE SEPARATELY OR WITH THE DECK CONCRETE OF THAT PHASE. IF THE DIAPHRAGM CONCRETE IS PLACED SEPARATELY, ALLOW AT LEAST 48 HOURS OF SET TIME BEFORE PLACING DECK CONCRETE. LOCATE THE HORIZONTAL CONSTRUCTION JOINT BETWEEN THE DIAPHRAGM AND DECK CONCRETE AT THE APPROACH SLAB SEAT.

2. FOR SECTION A-A AND ADDITIONAL NOTES SEE SHEET 53/70.

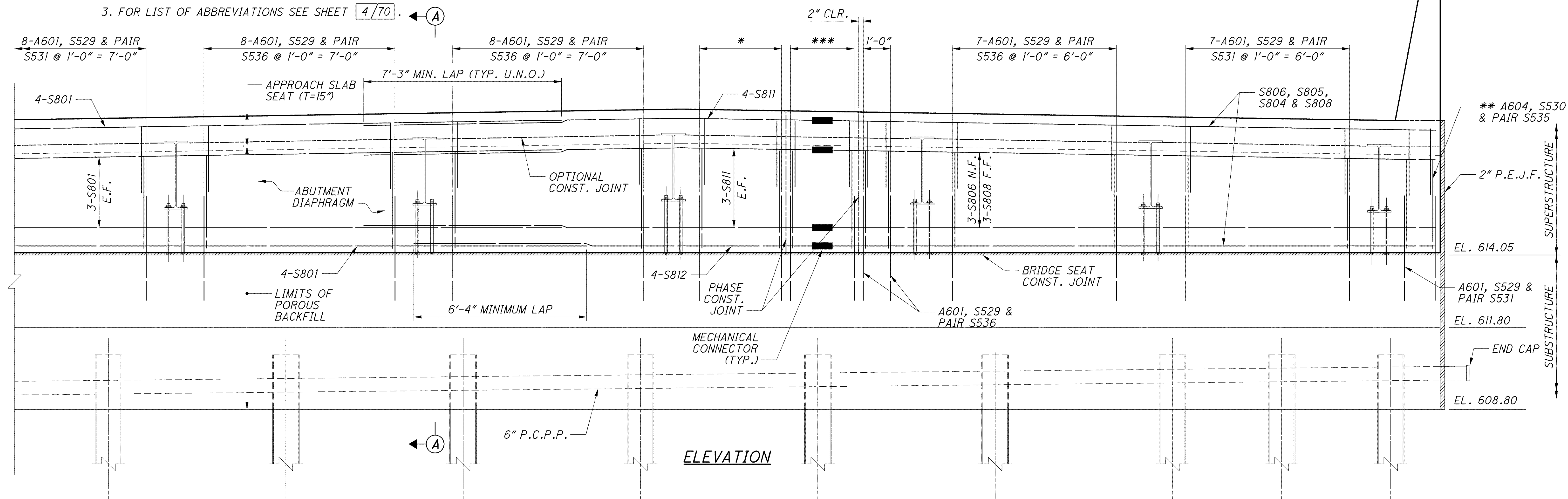
3. FOR LIST OF ABBREVIATIONS SEE SHEET 4/70.

4. MINIMUM BAR LAPS:
5 BAR = 2'-5"

PLAN

LEGEND:

- * - 4-A601, S529 & PAIR S536 @ 1'-0" = 3'-0"
- ** - BARS TO BE PLACED PARALLEL TO CL CONSTRUCTION
- *** - 4-A601, S529 & PAIR S536 @ 9" = 2'-3"



ELEVATION

DESIGN AGENCY: PARSONS BRINCKERHOFF, OUADE & DOUGLAS, INC., 614 W. SUPERIOR AVE., SUITE 400, CLEVELAND, OHIO 44113

DATE: 6-19-08

REVIEWED: RJO

DRAWN: LEL

DESIGNED: P.J.L.

CHECKED: EBS

STRUCTURE FILE NUMBER: 4300696 (L) 4300726 (R)

WESTBOUND FORWARD ABUTMENT DIAPHRAGM 2 OF 2

BRIDGE NO. LAK-2-0486 L&R

STATE ROUTE 2 OVER ERIE ROAD

LAK-2-3.32

PID No. 13486

52/70

1444

1679

j:\LAK\13486\bridge\LAK002_0486\csheets\002_0486CSD010.dgn 03-JUL-2008 1:46PM lntn