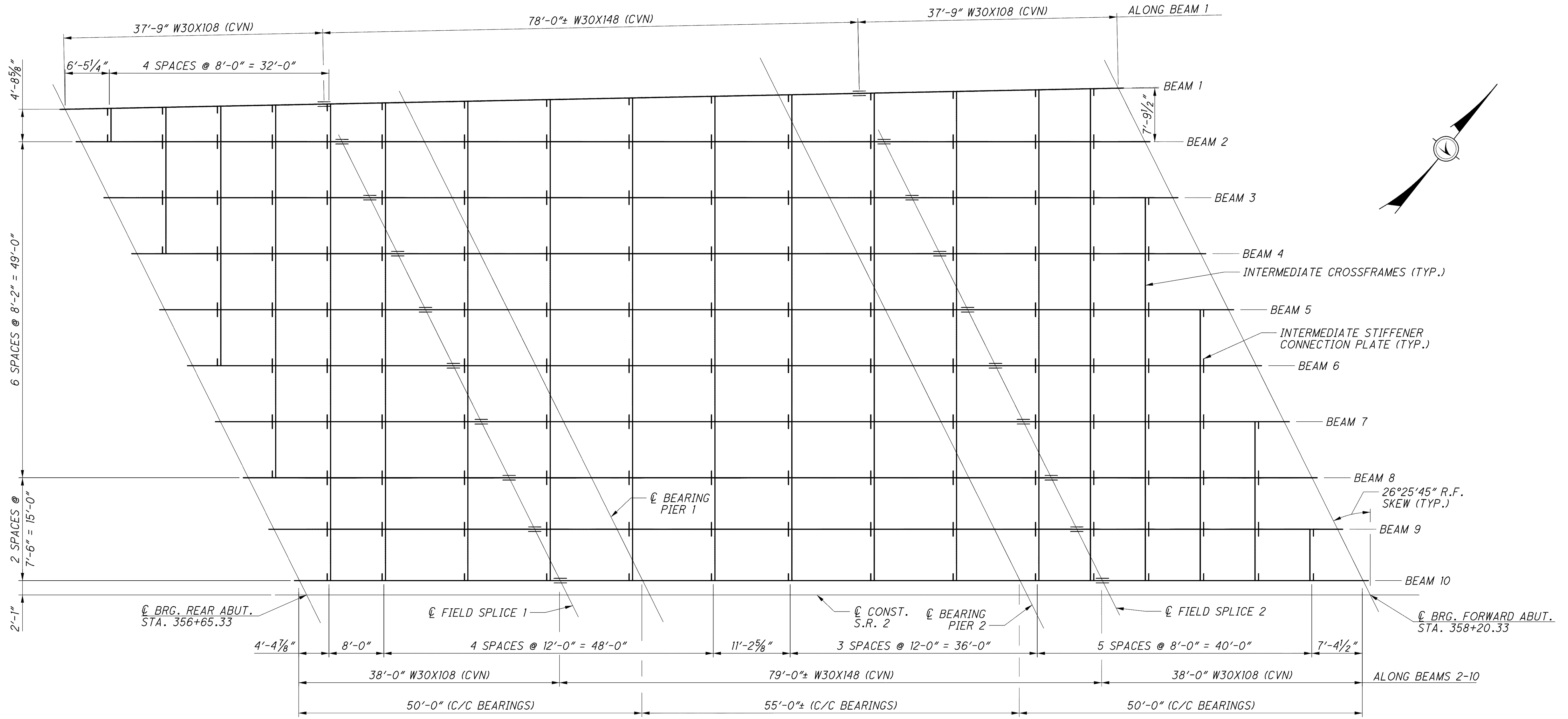


j:\LAK\13486\bridge\LAK002_0486\sheets\002_0486CSD014.dgn 03-JUL-2008 1:45PM lntn

NOTES:

1. FOR CROSSFRAME DETAILS, SEE STANDARD DRAWING GSD-1-96.
2. FOR LIST OF ABBREVIATIONS SEE SHEET 4/70.
3. ALL STRUCTURAL STEEL SHALL BE PAINTED, EXCEPT FOR THE TOP OF THE TOP FLANGE OF THE BEAM. THIS SHALL INCLUDE THE BEAMS, CONNECTION PLATES, CROSS FRAMES, SPLICE PLATES, BEARING PLATES, ETC. ALL PAINTING SHALL BE AS PER ITEM 514 AND FEDERAL COLOR NUMBER 595B-15450 (LIGHT BLUE).



FRAMING PLAN

DESIGNED	P.JL	CHECKED	EBS
DRAWN	L.LL	REVISED	
REVIEWED	RJO	STRUCTURE FILE NUMBER	4300696 (L) 4300726 (R)
DATE	6-19-08		

WESTBOUND FRAMING PLAN
 BRIDGE NO. LAK-2-0486 L&R
 STATE ROUTE 2 OVER ERIE ROAD

LAK-2-3.32
 PID No. 13486