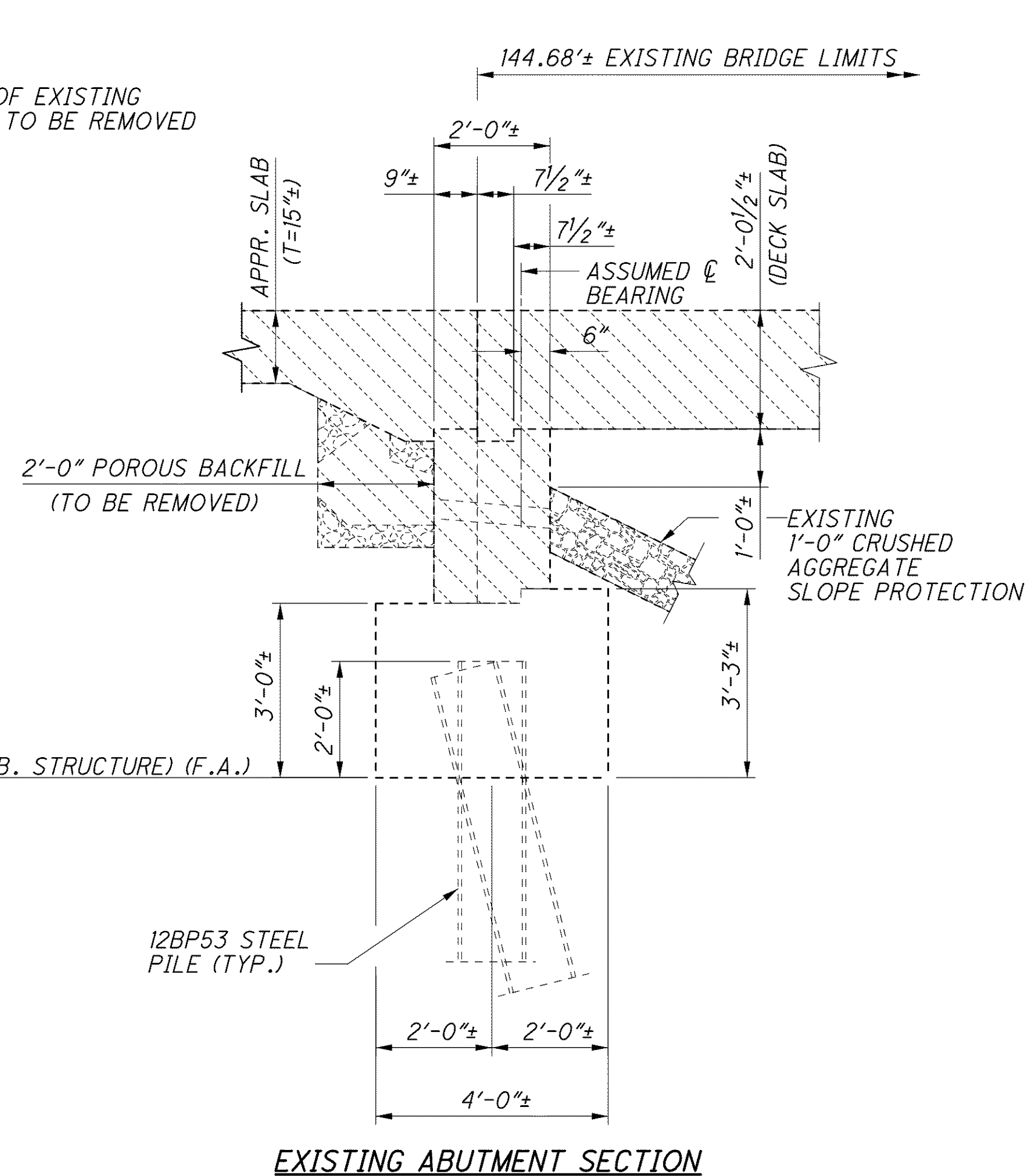
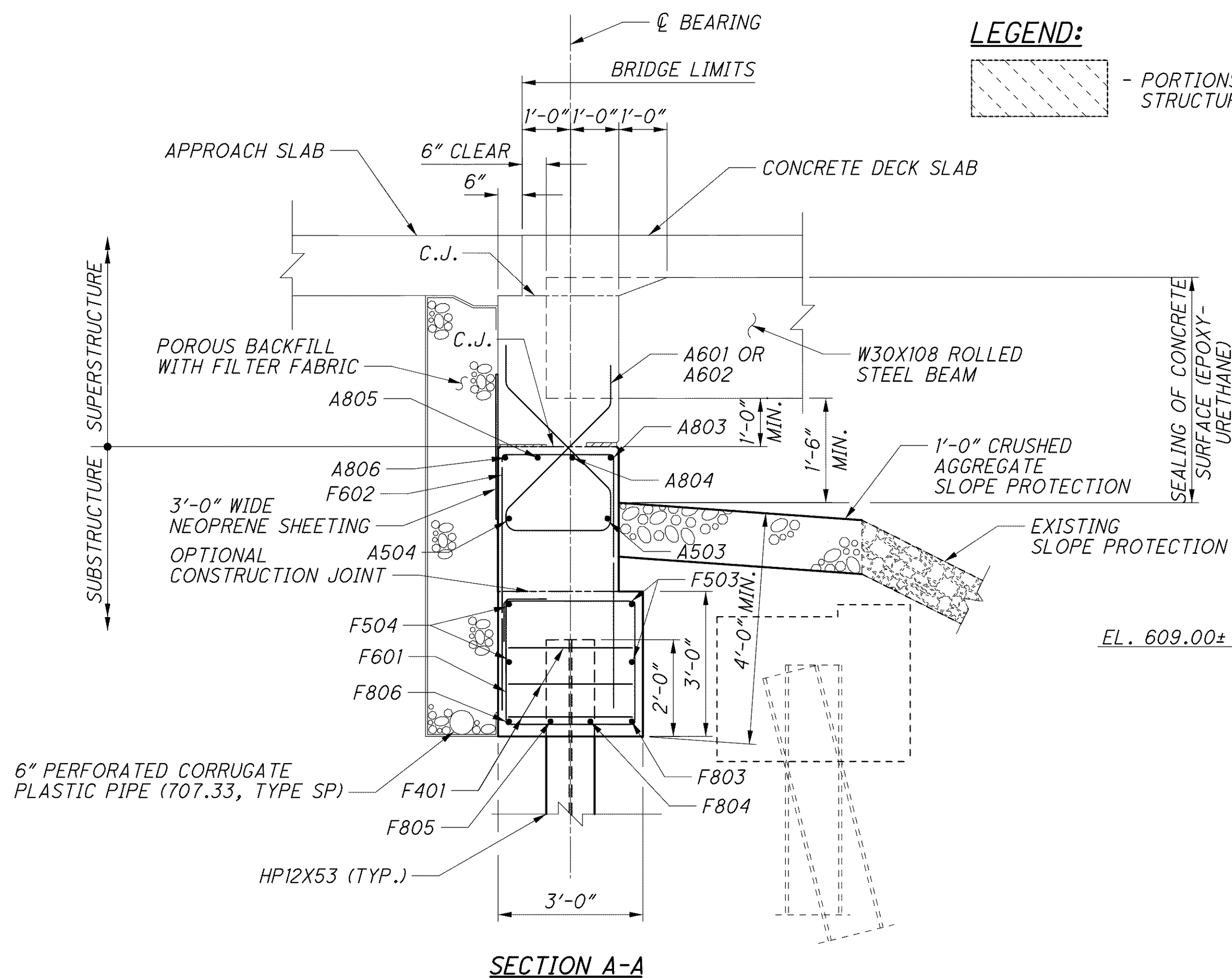
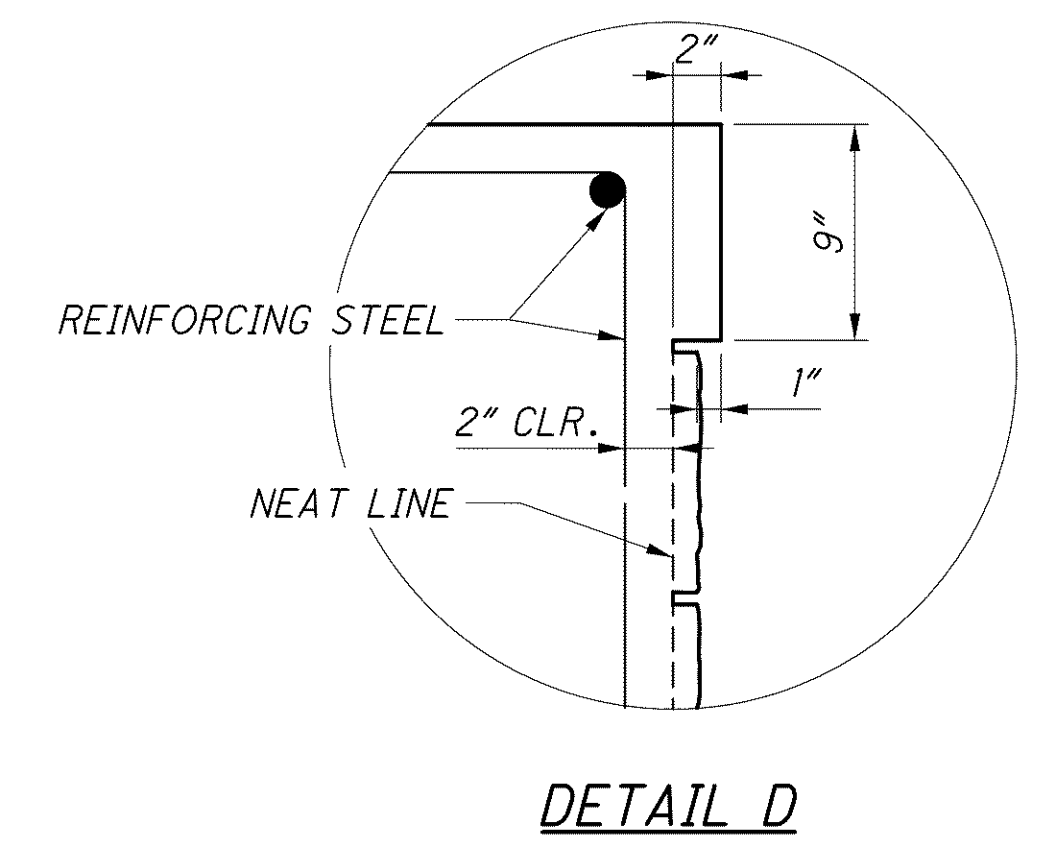
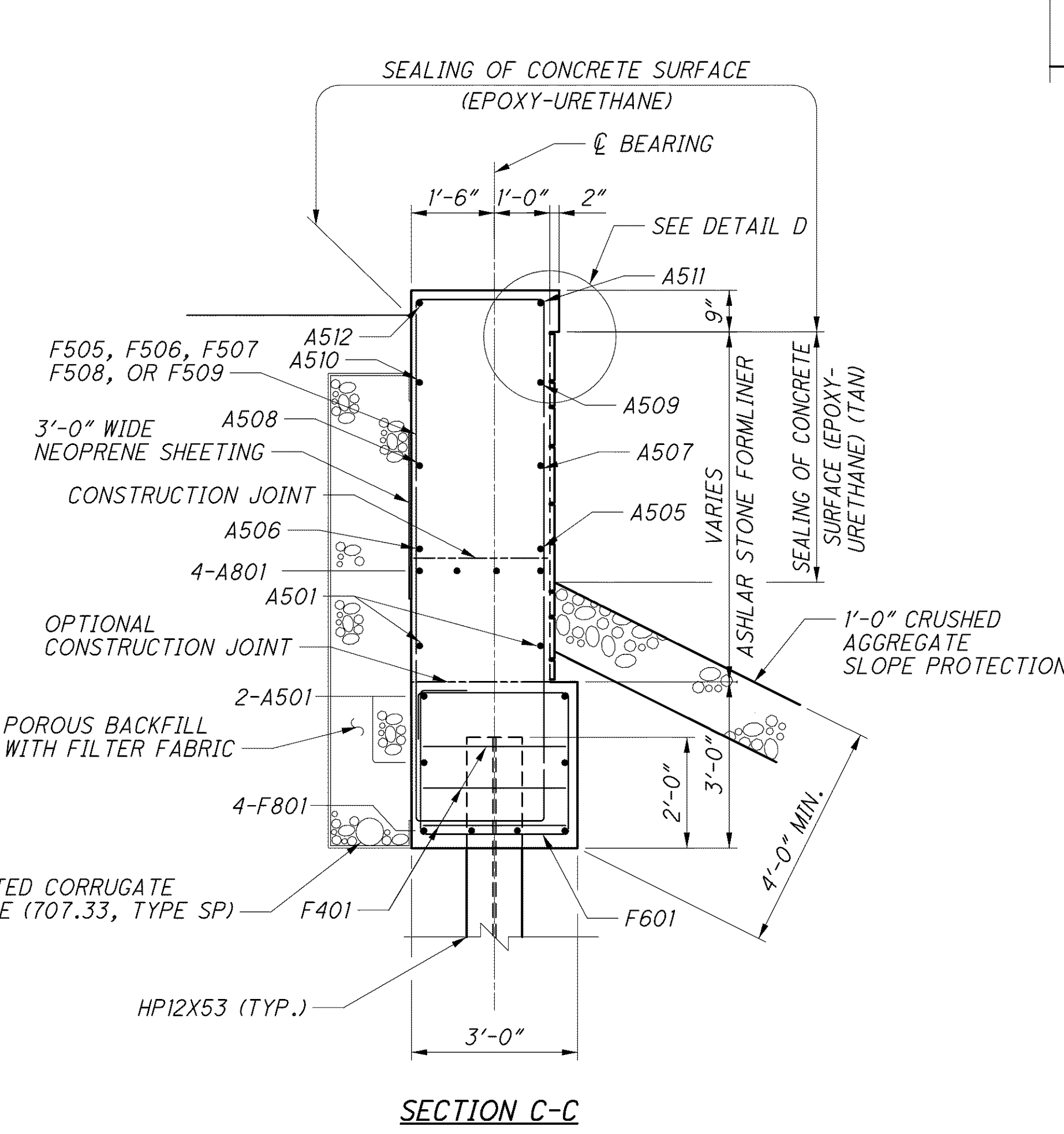
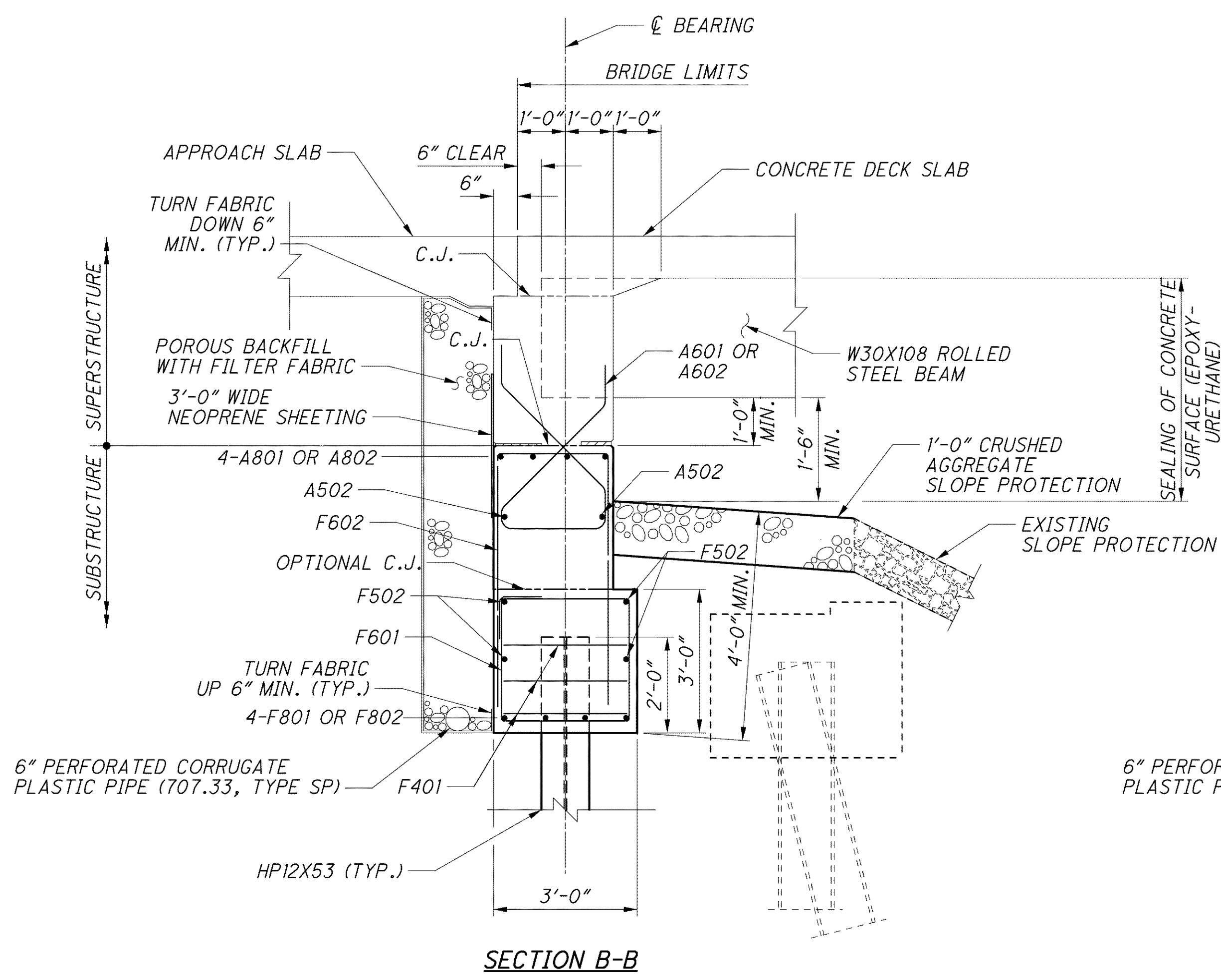
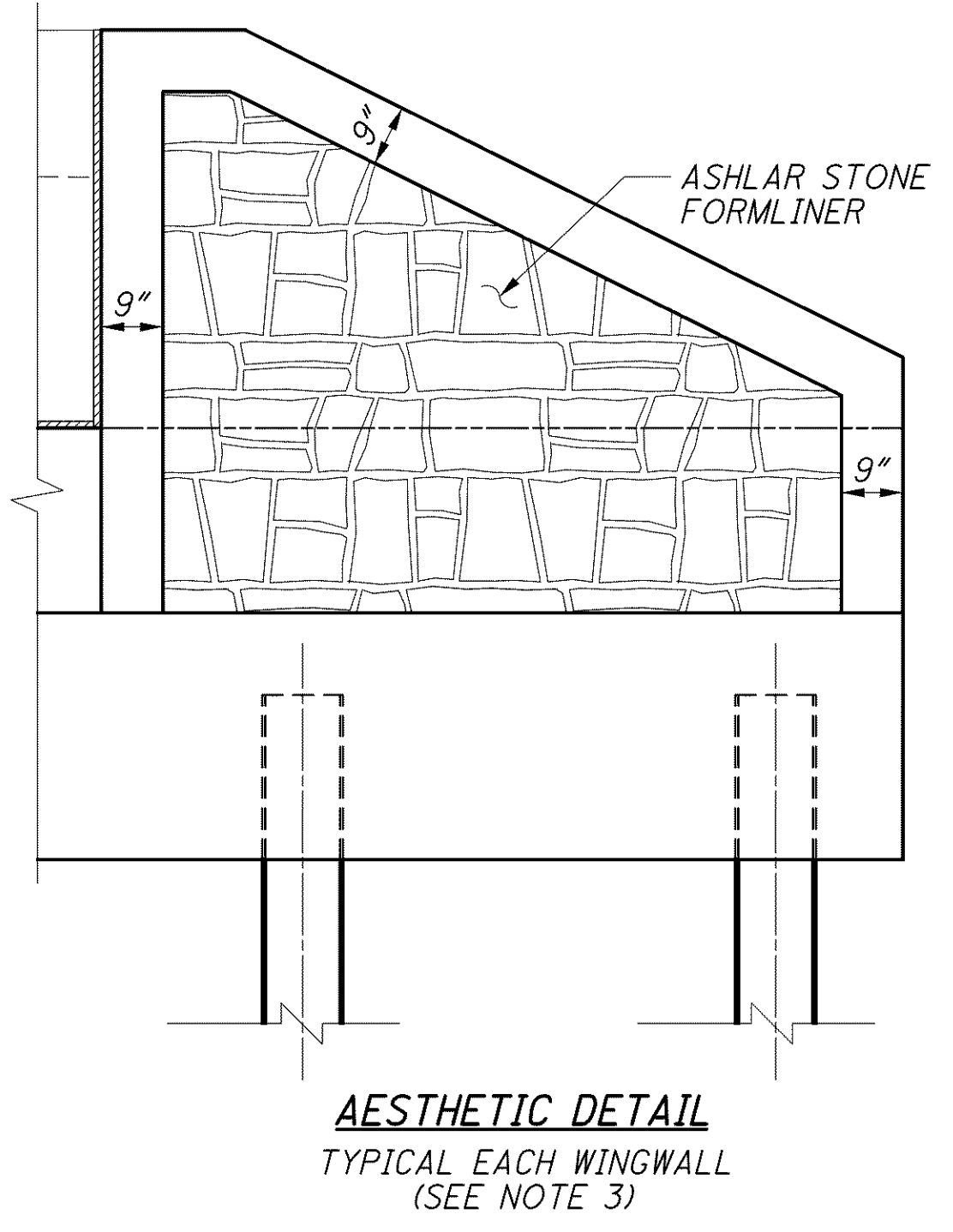


J:\LAK\13486\bridge\LAK002_0486C\sheets\02_0486CAF005.dgn 03-JUL-2008 1:40PM jlntr



- NOTES:**
- POROUS BACKFILL WITH FILTER FABRIC, 2 FEET THICK SHALL EXTEND UP TO THE PLANE OF THE SUBGRADE, TO 1 FOOT BELOW THE EMBANKMENT SURFACE, AND Laterally TO THE ENDS OF THE WINGWALLS.
 - TYPE 2 WATERPROOFING SHALL BE CENTERED VERTICALLY OVER PHASE CONSTRUCTION JOINTS AND EXTENDED FROM THE TOP OF WALL DOWN TO THE TOP OF FOOTING.
 - PROVIDE ITEM 512 SEALING OF CONCRETE SURFACES EPOXY-URETHANE, FEDERAL COLOR NUMBER (TAN) FOR ALL AREAS TREATED WITH ASHLAR STONE FORMLINER.
 - FOR LIST OF ABBREVIATIONS SEE SHEET 4/70.



DESIGN AGENCY: PARSONS BRINCKERHOFF QUADE & DOUGLAS, INC. 614 W. SUPERIOR AVE., SUITE 400 CLEVELAND, OHIO 44115

DESIGNED: P.J.L. CHECKED: EBS

DRAWN: BKJ REVISED:

REVIEWED: RJO

DATE: 6-19-08

STRUCTURE FILE NUMBER: 4300696 (L) 4300726 (R)

EASTBOUND FORWARD ABUTMENT DETAILS

BRIDGE NO. LAK-2-0486 L&R
STATE ROUTE 2 OVER ERIE ROAD

LAK-2-3.32
PID No. 13486

22 / 70

1414
1679